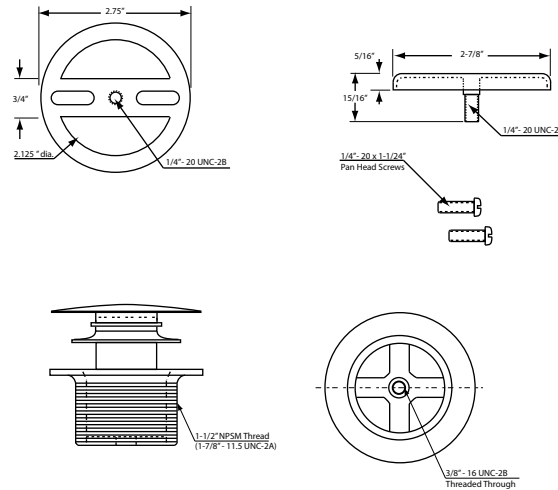
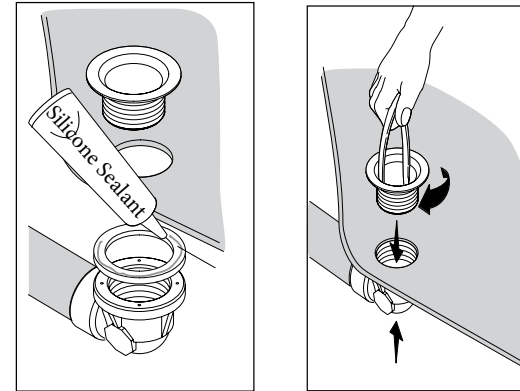


D398RK Installation Instructions



Follow all local building codes and requirements.

D398RK Drain & Overflow Kit For Integral Overflow Tubs



1. Place 792RW-LT washer between bottom of tub and lower fitting.
2. Remove plunger and stopper mechanism by unthreading counter clockwise.
3. Place a thin bead of silicone caulking around bottom of strainer and thread it in the tub outlet. Draw the strainer against the bottom elbow to pull the 792RW-LT until firm. Use Pliers or a plug wrench to tighten. Do not over tighten or damage can occur.
4. Place screws through the mounting ring and tighten onto mounting bracket. Place through tub overflow, center and tighten. Do not over tighten or damage can occur.
5. Thread overflow cover into center of mounting bracket. No caulking is required.
6. Check carefully for leaks.

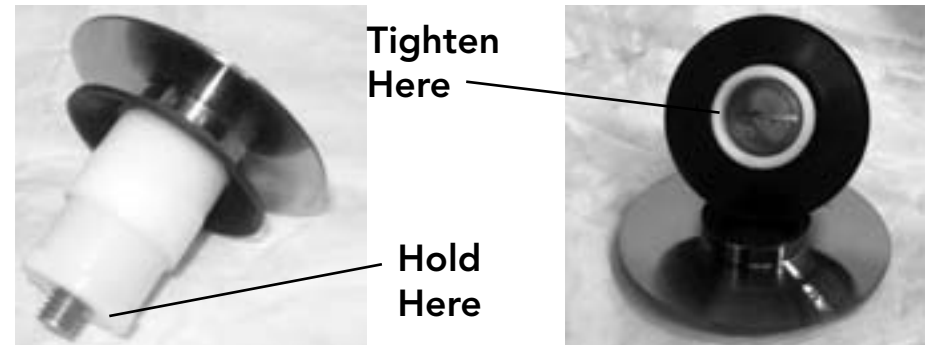
TO CLEAN:

Do not allow your product to come into contact with any cleansers fortified with ammonia, bleach, grease-cutters or other surfactant chemicals. Soft Scrub, Dawn Liquid Soap, Palmolive or any other combined cleaners contain certain chemical components that will dissolve and remove the finish's protective coating, and eventually the finish itself. Use only plain warm water and mild soap on a soft cloth or sponge. Avoid using any sponge with a scouring pad to clean your product. It is not necessary to rub hard to remove spots.

TO PROTECT:

An occasional application of Carnuba wax (without cleaners), like that found in Flitz Faucet Wax, Turtle Wax for Clear Coat Car Finishes or McGuire's Premium Wax, will enhance the finish lustre, reduce hard water spots and add an extra layer of protection to your finish.

REPLACING SEAL OR MECHANISM:



1. Grab the mushroom cap and rotate it counter-clockwise to remove the cap and tip toe mechanism from the bathtub strainer.
2. Unscrew the white plastic tip toe cartridge from the metal mushroom cap.
3. Turn the large brass screw clockwise, while holding the bottom of the plastic mechanism until just tight. Use no force. Do not make the screw firmly tight.
4. Operate the mechanism several times to ensure it is moving freely.
5. Thread mechanism into drain assembly.
6. Apply seal with cup side facing down.
7. Reinstal the mushroom cap.

Westbrass warrants all tip toe drains for 1 year. This includes the tip-toe cartridge, mushroom cap, seal washer and strainer body. The cartridge and washer are common plumbing items with a vast history of use by many of the finest manufacturers in the country, including Delta, Moen, Price-Pfister and Hydro Systems. Westbrass' cartridge attaches with a 3/8" - 16 screw. This is the most widely used size in the bath waste industry.