

PARTS LIST

KNOW YOUR TILLER

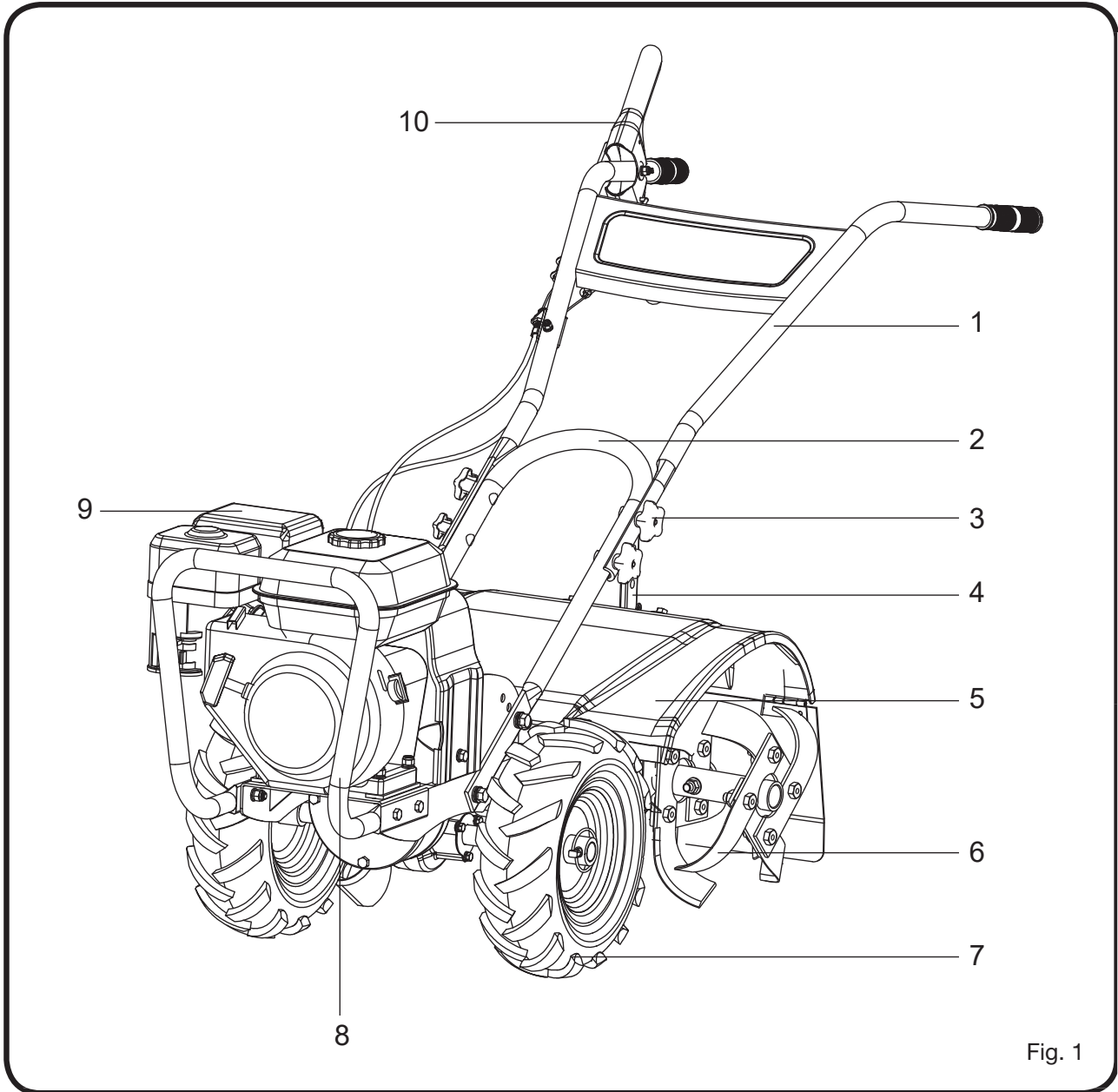


Fig. 1

1. Upper Handle
2. Lower Handle
3. Handle Knobs
4. Depth Regulator Lever
5. Tine Shield
6. Tines
7. Wheels
8. Front Guard
9. Engine
10. Forward/Reverse Lever

PARTS LIST

PARTS LIST

Carefully remove the tiller from its packaging and check that the following parts are included:

- | | |
|------------------------------|------------------------|
| A. Tiller 1pc | I. Knobs 4pcs |
| B. Upper handle Assembly 1pc | J. Bolt M8 4pcs |
| C. Front Guard 1pc | K. Bolt M8 x 20 4pcs |
| D. Depth Regulator Bar 1pc | L. Pins 2pcs |
| E. Tires 2pcs | M. Wheel Lock Pin 2pcs |
| F. Manual 1pc | N. Bolt M10 x 1.5 2pcs |
| G. Bottle of Engine Oil 1pc | O. Bolt M10 x 25 2pcs |
| H. Bolt M8 x 50 4pcs | |

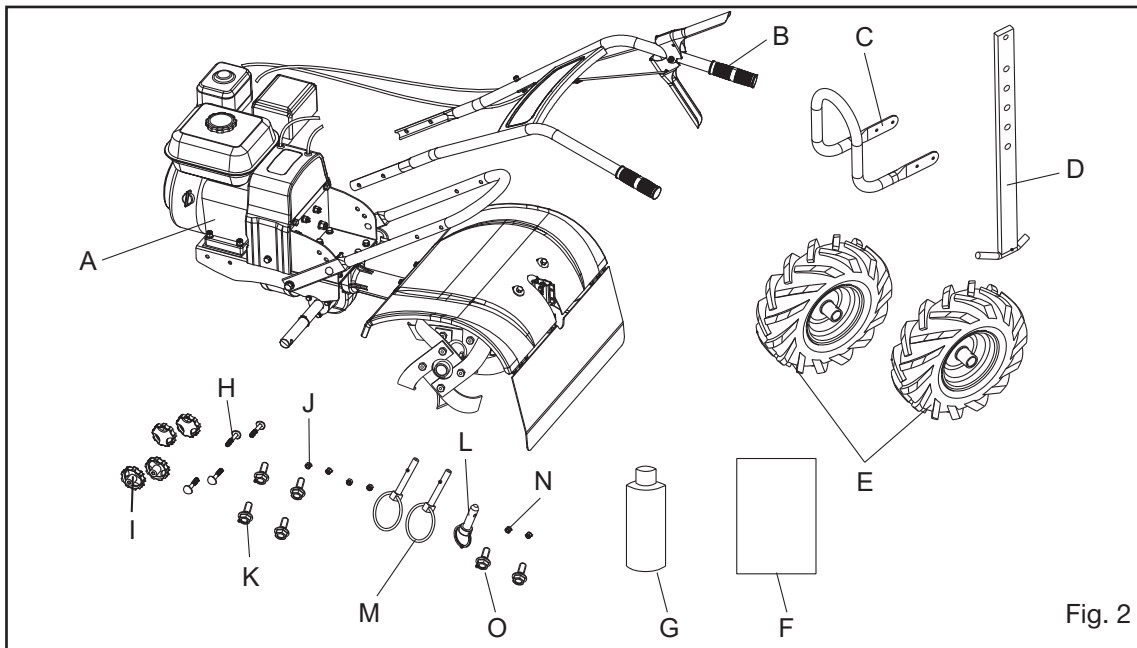


Fig. 2

⚠ WARNING !

If any parts are damaged or missing, do not operate this tiller until the missing parts are replaced. Failure to heed this warning could result in serious personal injury.

⚠ NOTICE

Always recycle the packaging in accordance with local recycling programs.

INTENDED USE

1. This gas-powered rear tine rotary tiller has been designed for tilling.
2. The machine is to be used only for its prescribed purpose. Any other use is deemed to be a case of misuse.
3. The user/operator and not the manufacturer will be liable for any damage or injuries of any kind caused as a result of this.
4. Please note that our equipment has not been designed for use in commercial, trade or industrial applications. Our warranty will be voided if the machine is used in commercial, trade or industrial businesses or for equivalent purposes.

TECHNICAL SPECIFICATIONS

TECHNICAL SPECIFICATIONS

Unit Weight	154lb(70kg)
Tilling Width	20 in (50cm)
Tilling Depth	up to 14"
Tine Diameter	15 in (38 cm)
Gasoline Capacity	3.8 US qt. (3.6 L)
Engine Oil Capacity	20 US oz (600 ml)
Spark Plug	180 lb-in (20Nm)
Spark Plug Gap	0.03 in (0.76 mm)
Engine Type	OHV 4-stroke, B&S CR950
Engine Displacement	208cc
Engine Speed (Full Throttle)	3600rpm
Engine Speed (Idle)	1800rpm
Bore Diam. x Stroke	2.76 x 2.13 in (70 x 54 mm)
Intake Valve Clearance	0.004 - 0.006 in (0.10 - 0.15 mm)
Exhaust Valve Clearance	0.006 - 0.008 in (0.15 -0.20 mm)
Tire Size	13x5.00-6 Directional Tractor Tread
Tire Pressure	25 psi min/30 psi max

ASSEMBLY

Read and follow the assembly instructions. Do not discard, any parts or materials until the unit is assembled.

References to the right or left side of the tiller are from the viewpoint of the operator's position behind the tiller.

WARNING !

- Do not operate tiller if it is damaged or not completely and correctly assembled.
- Before doing any assembly or maintenance to the unit, remove the wire from the spark plug.
- Always wear ANSI compliant safety glasses with side shields while assembling the tiller.

TO REMOVE TILLER FROM CARTON

1. Remove all parts and packaging components.
2. Use a utility knife to cut all four vertical edges and lay the side panels flat around the tiller.
3. Remove any remaining packaging.