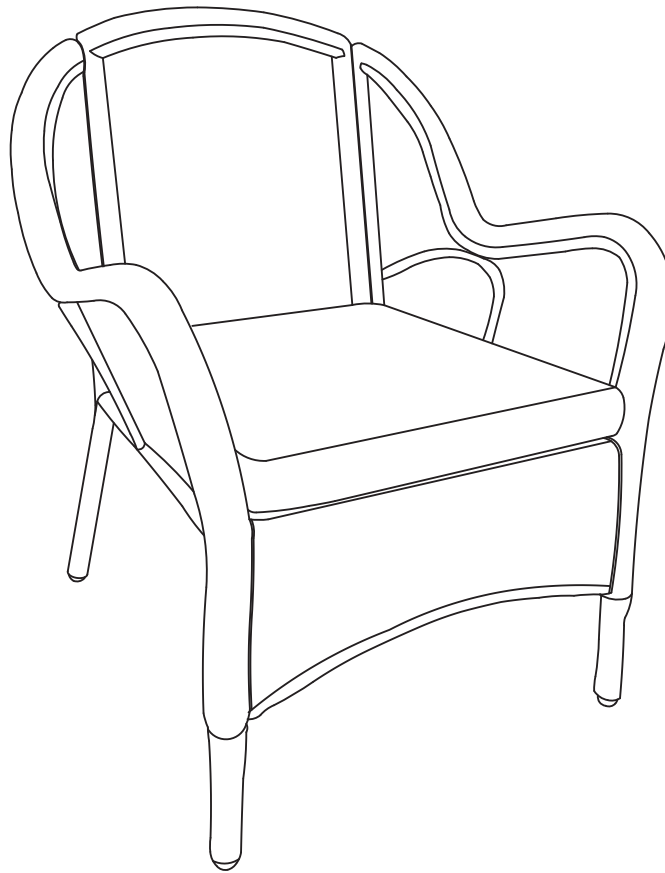


Item # 1007746614
Model # 65-91-1BR-996P

HAMPTON BAY®

USE AND CARE GUIDE

ROSEMONT MIX AND MATCH 2PK KD CHAIR



Questions, problems, missing parts? Before returning to the store,
call Hampton Bay Customer Service
8 a.m. – 7 p.m., EST, Monday-Friday, 9 a.m. – 6 p.m., EST, Saturday

1-855-HD-HAMPTON

HAMPTONBAY.COM

THANK YOU

We appreciate the trust and confidence you have placed in Hampton Bay through the purchase of this chair set. We strive to continually create quality products designed to enhance your home. Visit us online to see our full line of products available for your home improvement needs. Thank you for choosing Hampton Bay!

Table of Contents

Table of Contents	2	Assembly	6
Safety Information	2	Maintenance	7
Warranty	3	Care & Cleaning	7
Pre-Assembly	4,5		
Planning Assembly	4		
Hardware Included	4		
Package Contents	5		

Important Safety Informations

SAVE THESE INSTRUCTIONS



WARNING: THIS PRODUCT CAN EXPOSE YOU TO CHEMICALS INCLUDING CHROMIUM (HEXAVALENT COMPOUNDS) AND BENZENE, WHICH ARE KNOWN TO THE STATE OF CALIFORNIA TO CAUSE CANCER AND BIRTH DEFECTS OR OTHER REPRODUCTIVE HARM. For more information go to: www.P65warning.ca.gov/furniture.



WARNING: THIS SET WAS MADE FOR THE EXPLICIT PURPOSE OF PROVIDING OUTDOOR FUNCTIONS AND IS NOT TO BE USED AS A TOY. THIS PRODUCT IS INTENDED FOR NORMAL OUTDOOR USE; HOWEVER, THE MANUFACTURER RECOMMENDS STORING AND/OR COVERING THIS PRODUCT WHEN ANY FORMIDABLE/SEVERE WEATHER IS APPROACHING.

READ ALL INSTRUCTIONS BEFORE USE

To reduce the risk of injury to persons:

- ☐ Close supervision is necessary when this furnishing is used by or near children, or disabled persons, if applicable.
- ☐ Use this furnishing only for its intended use as described in these instructions. Do not use attachments not recommended by the manufacturer.
- ☐ Do not move the chair while it is occupied. Failure to obey this caution could result injury.

SET UP YOUR FURNITURE PROPERLY

- ☐ Ensure that all parts are assembled properly and fully tightened as per the instructions.
- ☐ When placing in the desired location, ensure that all legs are resting on the same surface.

EXAMINE YOUR FURNITURE

Examine occasionally to ensure that there are no loose parts. If loose parts are found, they must be re-tightened fully before additional use.

OBSERVE WEIGHT LIMITS

The weight limits for the following products are listed below:

- | | |
|---|--|
| <input type="checkbox"/> Chair: 275 lb | <input type="checkbox"/> Sofa: 825 lb |
| <input type="checkbox"/> Swivel Chair: 275 lb | <input type="checkbox"/> Rocking Chair: 275 lb |
| <input type="checkbox"/> Loveseat: 550 lb | <input type="checkbox"/> Chaise Lounge: 300lb |
| <input type="checkbox"/> Ottoman: 150 lb | <input type="checkbox"/> Dining Table: 100 lb |
| <input type="checkbox"/> Table: 50 lb | <input type="checkbox"/> Dining Chair: 200 lb |
| <input type="checkbox"/> Daybed: 550 lb | |



CAUTION: If you overload your furniture, injuries can occur.

Warranty

THREE YEAR FRAME, WEAVE AND FABRIC LIMITED WARRANTY

WHAT IS COVERED

We warrant the frame, weave and fabric to be free of manufacturing defects to the original purchaser for Three (3) years. For glass table top we warrant 30 days from the date of purchase.

WHAT IS NOT COVERED

This warranty does not cover commercial use, hardware, acts of nature, fire, freezing and abusive use. In addition, purchased parts are not covered under this warranty.

We reserve the right to make substitutions with similar merchandise, if the model in question is no longer in production.

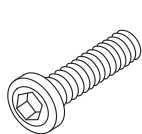
Contact the Customer Service Team at 1-855-HD-HAMPTON or visit www.Hamptonbay.com.

Pre-Assembly 65-91-1BR-996P

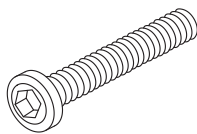
PLANNING ASSEMBLY

Compare all parts with the Hardware Included and Package Contents sections. If any part appears missing or damaged, do not assemble and use this product. Contact Customer Service.

HARDWARE INCLUDED



AA



BB



CC



DD



EE

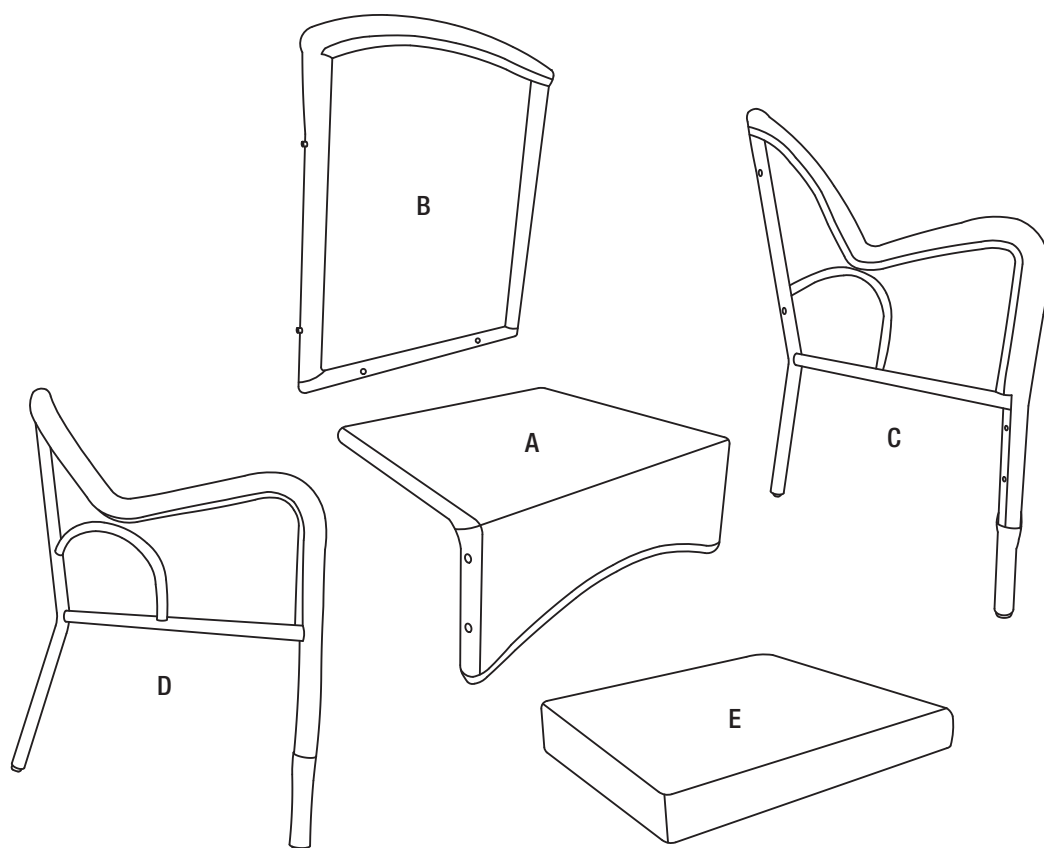
For 1 Chair

For 2 Chairs

Part	Description	Quantity	Quantity
AA	Panhead Allen bolt (6×35mm)	6	12
BB	Panhead Allen bolt (6×40mm)	4	8
CC	Washer (6mm)	10	20
DD	Allen wrench (4mm)	1	1
EE	Plastic cap (6mm)	10	20

Pre-Assembly 65-91-1BR-996P

PACKAGE CONTENTS

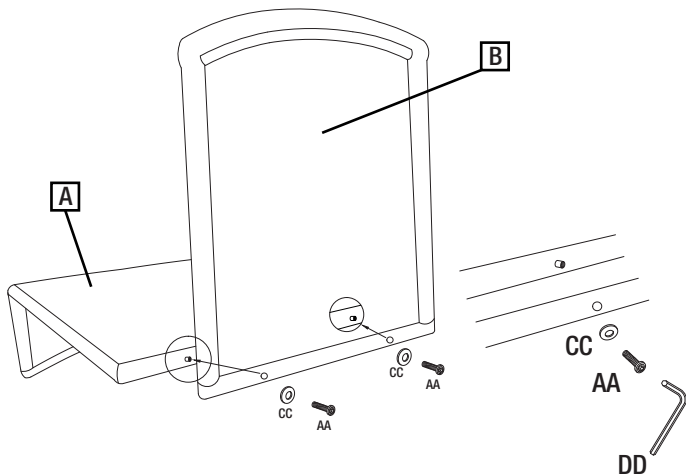


		For 1 Chair	For 2 Chairs
Part	Description	Quantity	Quantity
A	Seat	1	2
B	Back	1	2
C	Left Arm	1	2
D	Right Arm	1	2
E	Seat Cushion	1	2

Assembly 65-91-1BR-996P

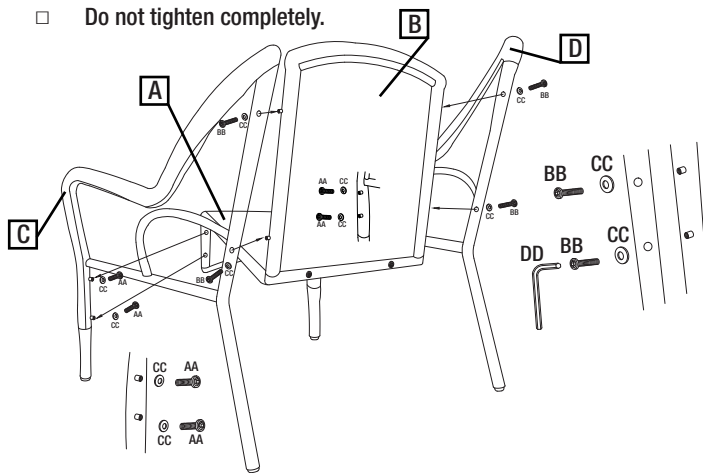
1 Attaching the seat and back

- Attach the back (B) to the seat (A) by aligning holes on the seat (A) with the holes on the back (B) and inserting panhead Allen bolts (AA) with washers (CC).
- Tighten half-way using the Allen wrench (DD).
- Do not tighten completely.



2 Attaching the left and right arm

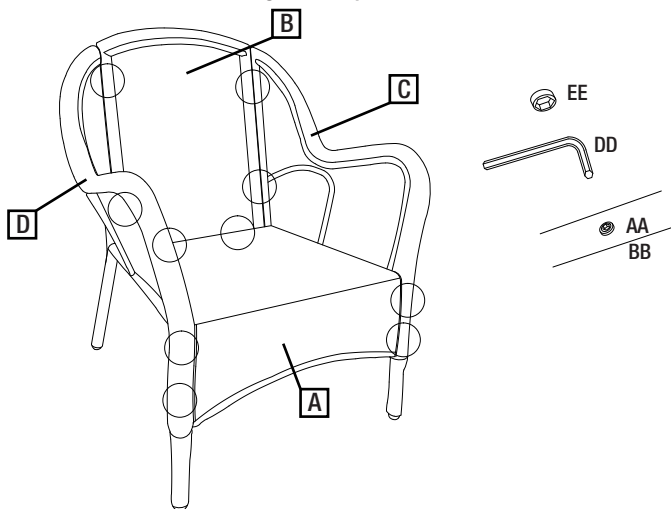
- Attach the left arm (C) and right arm (D) to the seat (A) and back (B) by aligning with side holes on the seat (A) and inserting panhead Allen bolts (AA) and (BB) with washers (CC).
- Tighten half-way using Allen wrench (DD).
- Do not tighten completely.



Note: For easier alignment and assembly, attach the lower panhead Allen bolts (AA) before the upper panhead Allen bolts (BB).

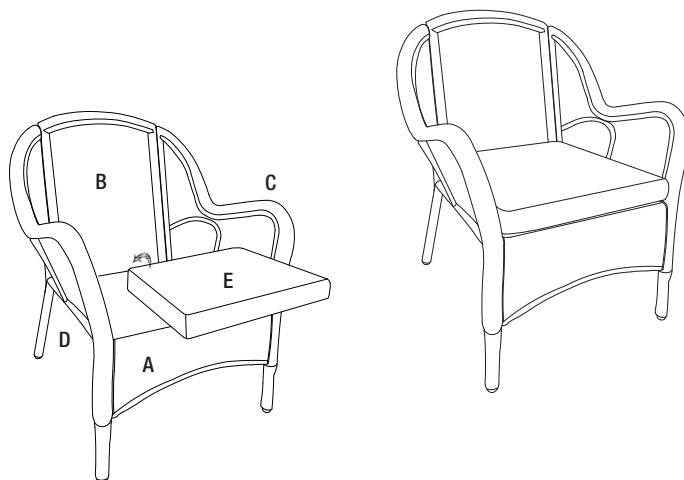
3 Completing the assembly

- Check the assembled chair and make adjustments if needed.
- Fully tighten all panhead Allen bolts (AA) and (BB) with Allen wrench (DD).
- Attach all plastic caps (EE).
- Place the chair right side up.



4 Installing the seat cushion

- Place the seat cushion (E) on the seat (A).
- The chair is now ready for your enjoyment.



Note: Repeat steps 1-4 for the second chair.

Maintenance

- ❑ Wash the frame with a mild solution of soap and water, rinse with clean water, and dry thoroughly.
- ❑ Never use cleaners that contain acid or abrasive materials.
- ❑ Use and operation: To improve the lifespan of this furniture, cover when not in use and store in a dry place in the off-season.

Care and Cleaning

- ❑ Before using, wipe with a clean, dry cloth. Do not use bleach or solvents. When not in use, store furniture in a cool, dry place.
- ❑ When cleaning the table top make sure to use a soft, clean cloth that does not bleed color as well.

HAMPTON BAY®

Questions, problems, missing parts?

Before returning to the store, call Hampton Bay Customer Service
8 a.m. – 7 p.m., EST, Monday-Friday, 9 a.m. – 6 p.m., EST, Saturday

1-855-HD-HAMPTON

HAMPTONBAY.COM

Retain this manual for future use.