

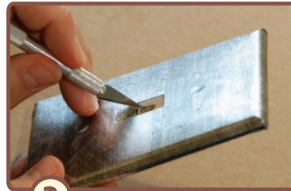
1

Cut around your outlet cover with a hobby knife on all sides, leaving excess on all sides to allow for wrapping (see photo 2). Peel off backing and apply to front of outlet cover.



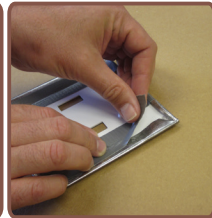
2

Cut away small squares at each corner, then fold over edges.



3

Cut away switch/outlet holes.



Tip: When wrapping the outlet cover foil around the backside of the wall/switch plate, additional tape may be used on the edges to hold the foil in place until it is ready to be installed to the wall.