

CONTENT

| | |
|-----------------------------|---|
| CAUTIONS | 1 |
| PRODUCT DESCRIPTION | 2 |
| OPERATION | 3 |
| WATER TANK & DRAINAGE | 4 |
| MAINTENANCE | 5 |
| TROUBLE SHOOTING | 6 |
| STORAGE & DISPOSAL | 7 |

CAUTIONS

Please read this manual carefully before operating and keep it for further reference!

If you have any questions, please contact us at **support@bublue.us** for help.

- Separate and count all parts and hardware.
- Read through each step carefully and follow the proper order.
- If possible, assemble the unit near where it will be placed in use, to avoid unnecessary moving.
- Always place the unit on a flat, steady and stable surface.
- Keep all small parts and packaging materials away from babies and children.
- If the supply cord is damaged, it must be replaced by the manufacturer.
- The appliance shall be disconnected from its power source during maintenance.
- Always operate the unit from a power source of equal voltage, frequency and rating as indicated on the product identification plate.
- Always use a power outlet that is grounded.
- Unplug the power cord when cleaning or when not in use.
- Do not operate with wet hands.
- Prevent water from spilling onto the unit.
- Do not immerse or expose the unit to rain, moisture or any other liquid.
- Do not leave the unit running unattended.
- Do not tilt or turn over the unit.
- Do not unplug while the unit is operating.
- Do not unplug by pulling on the power cord.
- Do not use an extension cord or an adapter plug.
- Do not put objects on the unit.
- Do not climb or sit on the unit.
- Do not insert fingers or other objects into the air outlet.
- Do not touch the air inlet or the aluminum fins of the unit.
- Do not operate the unit if it is dropped, damaged or showing signs of product malfunction.
- Do not clean the appliance with any chemicals.
- Ensure the unit is far away from fire, inflammable, or explosive objects.
- The unit shall be installed in accordance with national wiring regulations.
- Do not use means to accelerate the defrosting process or to clean, other than those recommended by the manufacturer.
- The appliance shall be stored in a room without continuously operating sources (for example: open flames, an operating gas appliance or an operating electric heater).
- The appliance shall be stored so as to prevent mechanical damage from occurring.
- Do not piece or burn, even after use.
- Pipe-work shall be protected from physical damage and shall not be installed in an unventilated space, if that space is smaller than 43 sq.ft.
- Compliance with national gas regulations shall be observed.
- Keep any required ventilation openings clear of obstruction.
- The appliance shall be stored in a well-ventilated area where the room size corresponds to the room area as specified for operation.
- Any person who is involved with working on or breaking into a refrigerant circuit should hold a current valid certificate from an industry-accredited assessment authority, which authorizes their competence to handle refrigerants safely in accordance with an industry-recognized assessment specification.

PRODUCT DESCRIPTION

The dehumidifier is used to remove excessive moisture from the air. The resulting reduction in relative humidity protects buildings and their contents from the adverse effects of excess humidity.

2.1 FEATURES



Powerful and Efficient moisture removal



Three modes: Intelligent & Continuous & Sleeping



Two drainage methods: Manual & Continuous



Humidity Monitor showing current air humidity



A 12-hour timer for automatic operation time setting



Child Lock preventing unwanted injuries



Air Filter for dust removal



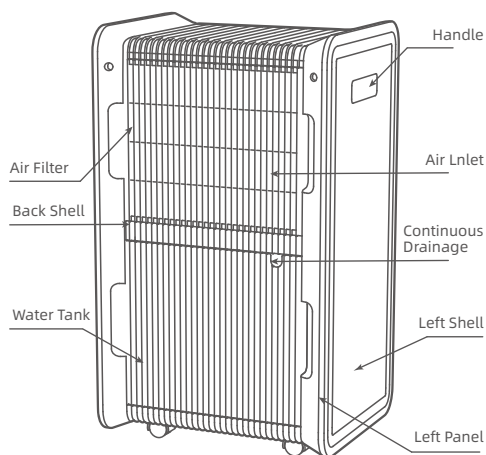
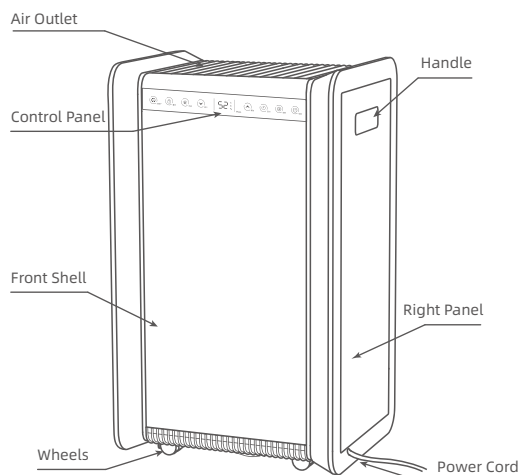
Quiet fan with two speed options

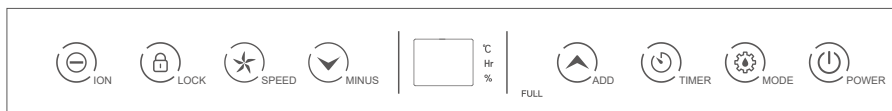
2.2 PARAMETERS

| | |
|---------------------|------------------------|
| Model No. | OL50-D024D |
| Dehumidification | 125Pints/D(95°F/90%RH) |
| Capacity | 100Pints/D(86°F/80%RH) |
| | 45Pints/D(65°F/60%RH) |
| Rated Input Current | 5.5A(86°F/80%RH) |
| | 3.5A(65°F/60%RH) |
| Refrigerant/Charge | R410A/12.0oz |
| Low Side Pressure | 261psi |
| High Side Pressure | 580psi |
| BCSC | 15A |
| Compressor Input | RLA:3.12A/LRA:20A |
| Fan Motor Power | 0.077HP |

PRODUCT DESCRIPTION

2.3 PRODUCT DISPLAY





3.1 BUTTONS

POWER

Press this button to turn the unit on/ off. The “POWER” button will light up when the unit is on, and the default settings for fan speed and humidity level are: high and 50%.

MODE

There are three mode options: Intelligent-Continuous-Sleeping

Intelligent mode: Both target humidity level and fan speed are adjustable. The fan and compressor will start working when the environmental humidity level \geq set humidity level + 3%, and will stop working when the environmental humidity level \leq set humidity level - 3%. The “MODE” button will appear blue.

Continuous mode: The unit will run continuously with high fan speed regardless of the ambient humidity level, and the target humidity level can't be set according to one's own desire. The “MODE” button will appear red.

Sleeping mode: All indicators will turn dark, the fan speed will always remain low, and the target humidity level can't be set according to one's own desire. The fan and compressor will start working when the environmental humidity level \geq 63%, and will stop working when the environmental humidity level \leq 57%. The “MODE” button will appear green. Touch any button to wake the indicators up.

Press this button once to switch between the modes.

TIMER

The first press of this button will turn the timer on, and each further press will increase the timer by 1 hour. The timer will automatically turn off when it reaches 12 hours (shown as “00” on the LED display). When the timer is operating, press this button when the timer digits flash to cancel the timer.

In the power-on state, the timer indicates the length of operation time.

In the standby state, the timer indicates the length of time until the reserved turning-on time.

The “TIMER” button will always be lit when the timer is on.

ADD

Each press of this button will increase the set humidity level/timer by 5 %/1 hour within the range of 30-80%/0-12 hours.

MINUS

Each press of this button will decrease the set humidity level/timer by 5 %/1 hour within the range of 30-80%/0-12 hours.

SPEED

There are two fan speed options: High-Low. Press this button to switch between the speeds. The “SPEED” button will appear red when the fan speed is high, and appear green when the fan speed is low. Under continuous mode, sleeping mode, or defrosting period, the fan speed is not adjustable.

LOCK

A long press of this button will turn on/off the child-lock function. All buttons are locked and unresponsive to any pressing, and the “LOCK” button appears lit.

ION

Press this button to turn on/off the ION function (for dust removal). The “ION” button will stay lit when the ION function is on.

3.2 INDICATORS

FULL : Water Tank Full Indicator

 : Ambient Temperature/Timer/Humidity Level Display

NOTE:

- The dehumidifier starts operating in the mode that it was last in.
- The dehumidifier starts dehumidifying if the room humidity is 3% higher than the selected humidity.
- There is a protective 3-minute time delay for the compressor. Wait 3 minutes for the dehumidifier to resume dehumidification.

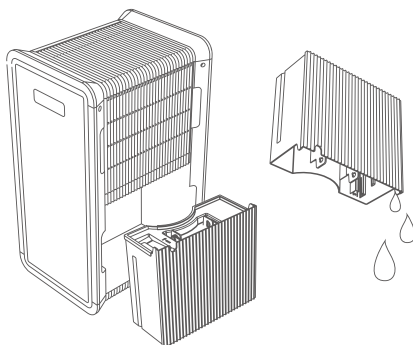
WATER TANK & DRAINAGE

1. Water Tank Full Alarm

- When the tank is full, the Water Tank Full Indicator lights up and the unit beeps for five times (will not beep if in Sleeping mode).
- The compressor and fan automatically shut down and all the functions freeze until the tank is emptied and back in the right position.

2. Empty the tank

- Grab the notch at the two sides of the tank and pull it out with both hands carefully.
- Empty the water.
- Put the water tank back in position. The dehumidifier will resume working.

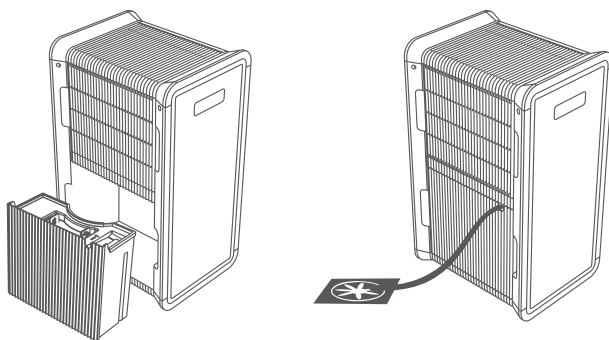


3. Manual Drainage

- Use the water tank for drainage. Empty the tank when the Water Tank Full Indicator lights up.

4. Continuous Drainage

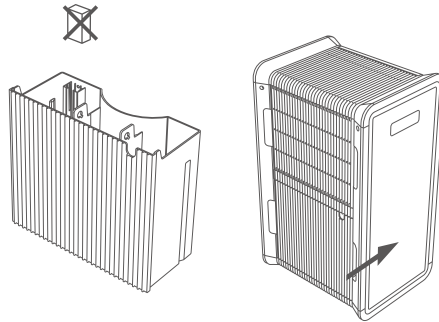
- Take out the water tank.
- Use a drain hose (diameter = 0.43 inches & ideal length = 11.8 inches) to connect the water outlet.
- Pass the drain hose through the cutting hole on the tank and put the tank back.



WARNING: the end of the hose should not be submerged in water to prevent it from being blocked or damaged.

5.1 PRECAUTIONS

- Do not discard water tank magnets and plastic rivets. Otherwise, the appliance will not automatically stop operating when the water tank is full, and the condensate will overflow and damage the floor of the room.
- Make sure to drain the water tank thoroughly and put the water tank back in place, otherwise the dehumidifier cannot function.
- If the tank is dirty, wash it with cool/warm water. Do not use cleanser, steel balls, chemically treated dust-proof cloth, gasoline, benzene, thinners, or other chemical solvents in case of damage and leakage.



5.2 CLEANING

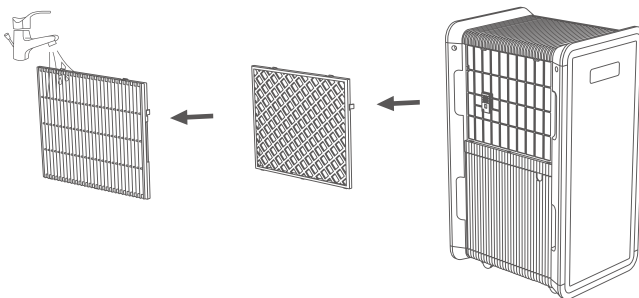
1. Body Cleaning

Use a soft and slightly moist cloth to clean the dehumidifier's body.

WARNING: Before cleaning or conducting maintenance, please turn off and unplug the machine to avoid the risk of electrocution

2. Filter Cleaning

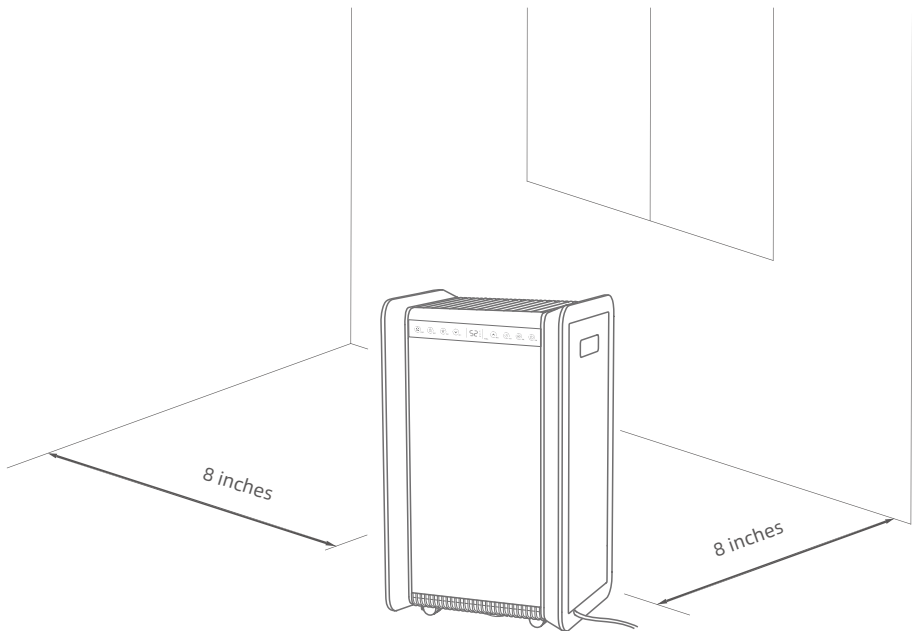
- Remove the filter frame and take off the filter.
- Use a vacuum cleaner to gently absorb the dust on the surface.
- If the filter is dirty, wash it with water and a soft detergent, and dry it thoroughly afterwards.
- Put the filter back.



WARNING: It is strongly advised to rinse the filter every two weeks. Any dust blocking the filter will potentially affect the machine's functionality.

5.3. LOCATION

1. Place the appliance on a firm and horizontal surface in an area with at least 8 inches of free space around it to allow for proper air circulation.
2. Never install the appliance at a place that could be subject to:
 - Heat sources such as radiators, heat registers, stoves or other products that produce heat.
 - Possible splashing of oil or water
 - Direct sunlight
 - Mechanical vibration or shock
 - Excessive dust
 - Lack of ventilation, such as cabinet or bookcase
 - Uneven surface



TROUBLE SHOOTING

1. Functioning Temp. $41^{\circ}\text{F} \leq \text{Ambient Temp.} \leq 95^{\circ}\text{F}$

When the ambient temp is lower or higher than the functioning temp, the dehumidifier stops functioning. When $41^{\circ}\text{F} \leq \text{Ambient temp.} \leq 61^{\circ}\text{F}$, the compressor automatically defrosts at intervals; during defrosting, the compressor stops and the fan keeps running.

2. Before Calling for Service

Before contacting the customer service, please review the following troubleshooting list that includes common problems that are not the result of a defect in workmanship or materials.

| Problem | Possible Cause | Solution | |
|-----------------------------|--|--|---|
| Appliance not operating | Power cord not connected properly. | Insert the power cord securely into the wall outlet. | |
| | Water tank is full. | Empty the water tank and re-install it properly. | |
| | Ambient Temperature too high/low (protection mechanism triggered). | Make sure the machine is under proper temperature (41°F ~ 95°F). | |
| Humidity Level not dropping | Air filter clogged by dust. | Clean the air filter as instructed. | |
| | Air inlet or outlet obstructed. | Remove the obstruction from the air inlet or outlet. | |
| | Ambient temperature is below 68°F. | This is normal. Appliance will automatically defrost in low-temperature environment. | |
| | The set humidity level is higher than the ambient humidity level. | Set the humidity level below the ambient humidity level. | |
| Water Leakage | Overflow happened while moving the appliance. | Empty the water tank before transporting. | |
| | Drain hose is kinked, bent, or blocked. | Straighten the hose or remove the obstruction from the hose. | |
| Excessive Noise | Machine tilted or being upside down. | Place the appliance on horizontal and firm ground. | |
| | Some components became loose and are vibrating. | Secure and tighten the loose components. | |
| | Noise sounds like water flowing. | This is normal. Such noise comes from the unit's flowing refrigerant. | |
| Error code | E2 | Humidity sensor problem | Change the sensor. |
| | LO | Ambient humidity < 20% | The dehumidifier turns off for self-protection. |
| | CH | Ambient temperature > 95°F | |
| | CL | Ambient temperature < 41°F | |
| | HI | Ambient humidity > 90% | The dehumidifier keeps operating. |

Warning:

If the Water Tank Full indicator is always on, there may be a malfunction in the machine. Please seek technical support from professionals. If anything unexpected happens, please turn off and unplug the machine immediately, and seek technical support from certified electrical engineers.

STORAGE & DISPOSAL

7.1 STORAGE

If you are not going to use the appliance for an extended period of time (more than a few weeks), it is best to clean and dry it completely before preserving the appliance in a ventilating, dry, corrosive gas-free, and safe indoor space. The appliance must be kept in an upright position when in storage.

Note: In order to avoid the damage of parts and mold, the carburetor in the device must be dried. Take it out and leave it in a ventilated place for a few days to dry. Another method is to adjust the humidity level to 5% higher than the ambient humidity level, so that a fan can blow to dry the evaporator for several hours.

7.2 DISPOSAL

Do not dispose of electrical appliances as unsorted municipal waste. Instead, use designated collection facilities. Contact your local government for information regarding the available disposal collection system.

