

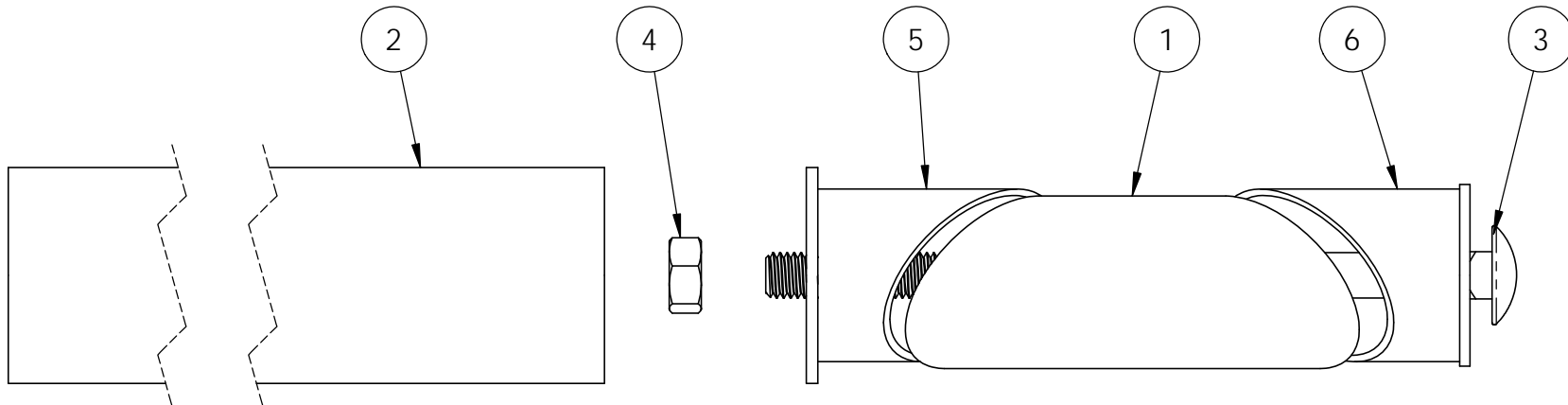


Product & Packaging Specs

OZ-Post Post Extender (OZ-PST-EXT)

Item #: 20550

ITEM NO.	QTY.	PART NUMBER	DESCRIPTION
1	1	20550-12	Sleeve, Post Extender Middle
2	1	20550-16	Pipe Extension Assembly
3	1	Bolt	Carriage Bolt, 1/2-13x8
4	1	Nut	Nut, Hex 1/2-13
5	1	20550-14	Upper Assembly
6	1	20550-15	Lower Assembly



Weight: 11.10 LBS
 Scale: 1:2
 Last updated: 3/8/2017

20550



OZCO BUILDING PRODUCTS

Product & Packaging Specs

OZ-Post Post Extender (OZ-PST-EXT)

Item #: Typical Installation



50100/50110

OZCO Project #262



50100/50110

OZCO Project #262
extended to 8' utilizing 20550

Weight: 784.23 LBS
Scale: 1:26
Last updated: 3/8/2017

20550

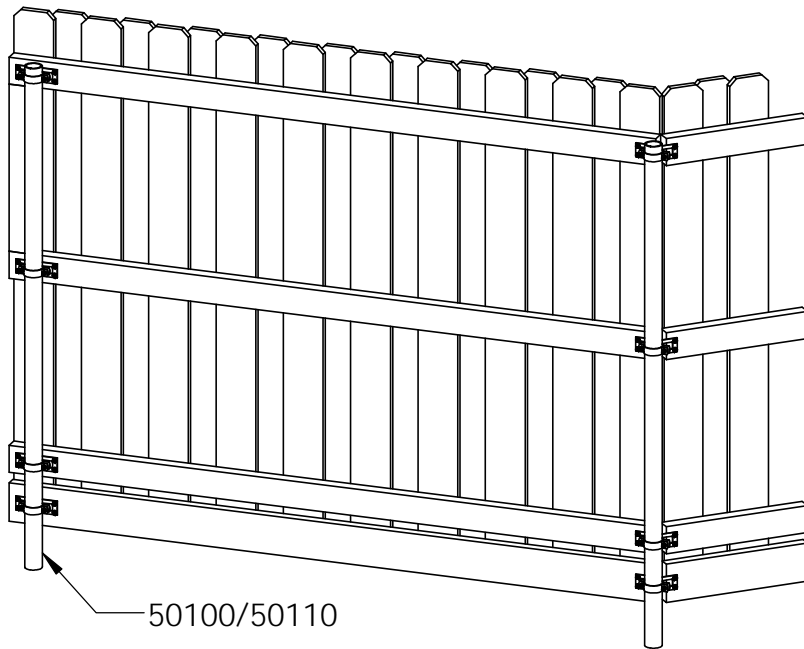


OZCO BUILDING PRODUCTS

Product & Packaging Specs

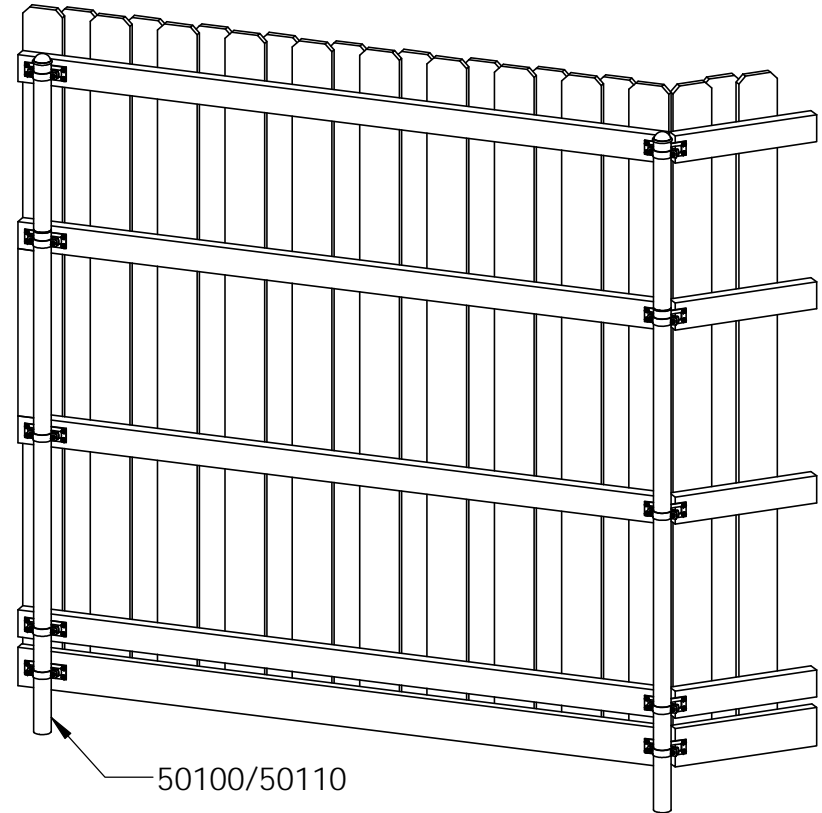
OZ-Post Post Extender (OZ-PST-EXT)

Item #: Typical Installation



50100/50110

OZCO Project #262



50100/50110

OZCO Project #262
extended to 8' utilizing 20550

Weight: 784.23 LBS
Scale: 1:26
Last updated: 3/8/2017

20550



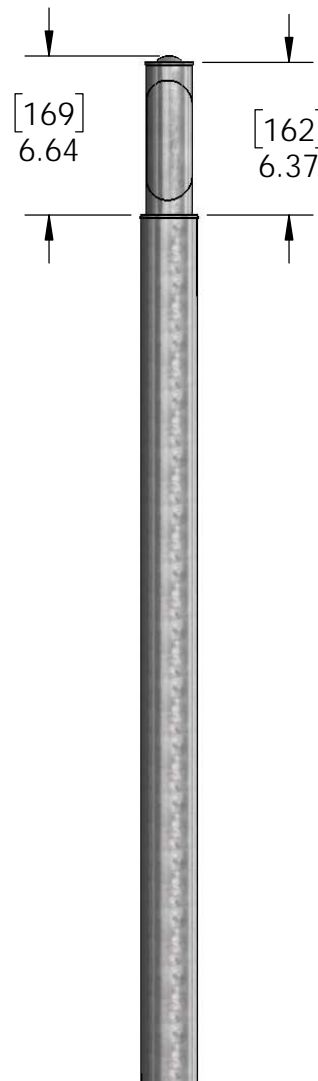
OZCO BUILDING PRODUCTS

Product & Packaging Specs

20550 Packing
Item #: Individual Packing



clear shrink wrap



Weight: 15.30 LBS
Scale: 1:8
Last updated: 3/8/2017

20550

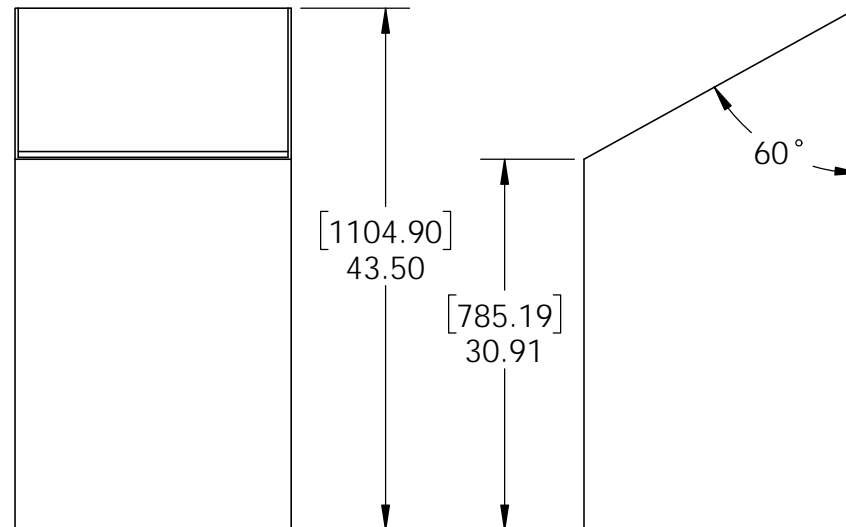
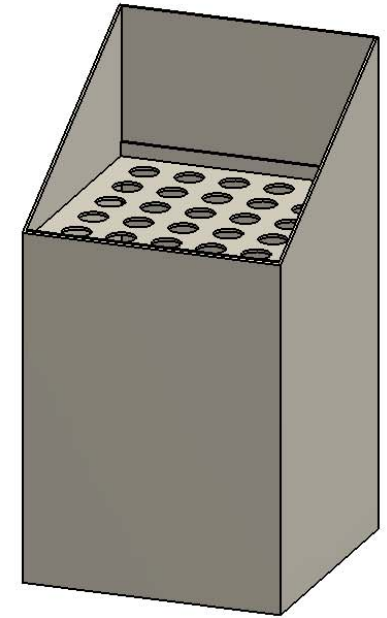
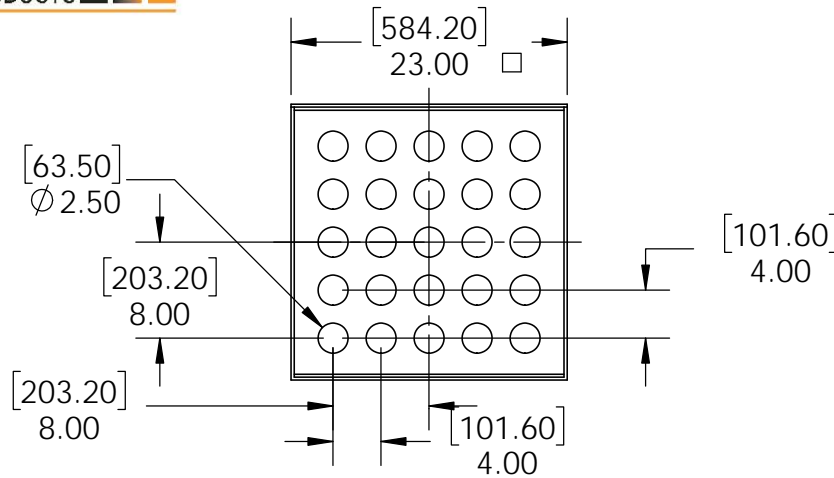


OZCO BUILDING PRODUCTS

Product & Packaging Specs

Box, 20550 Display

Item #: Display



Material: Corrugated Paper
 Finish: See artwork
 Weight: 6.09 LBS
 Scale: 1:16
 Last updated: 3/8/2017

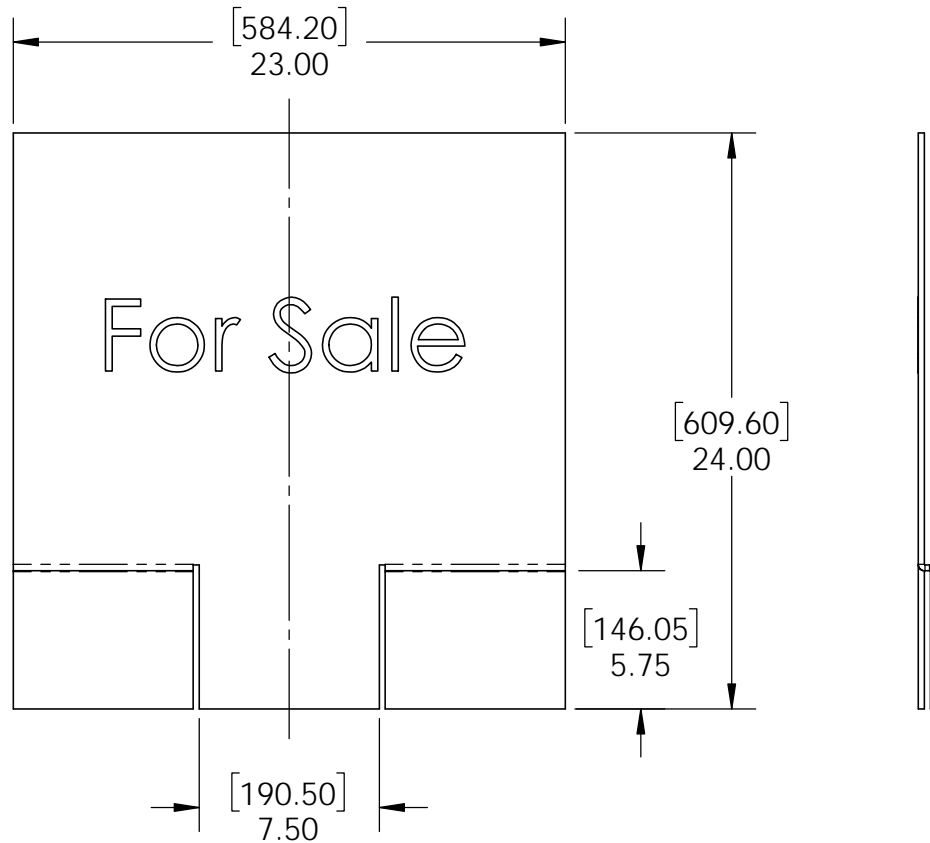
20550



Product & Packaging Specs

20550 Display Signage

Item #: Signage



Material: Corrugated Paper
Finish: See artwork
Weight: 0.78 LBS
Scale: 1:8
Last updated: 3/8/2017

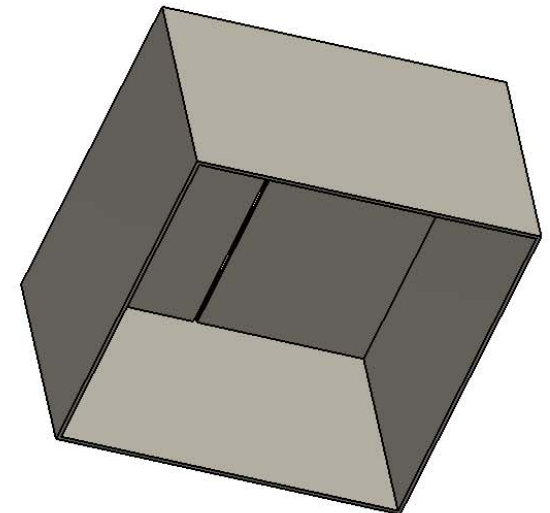
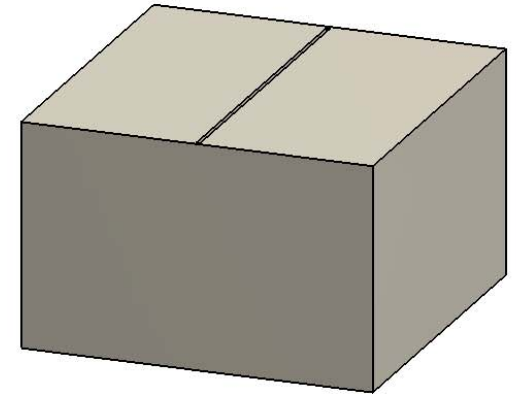
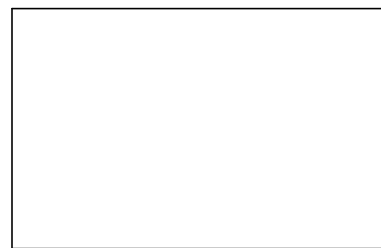
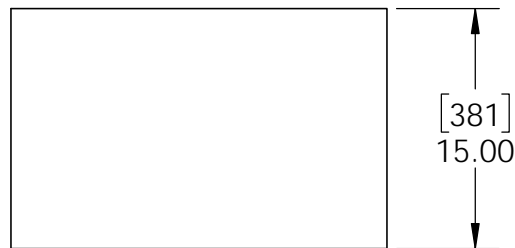
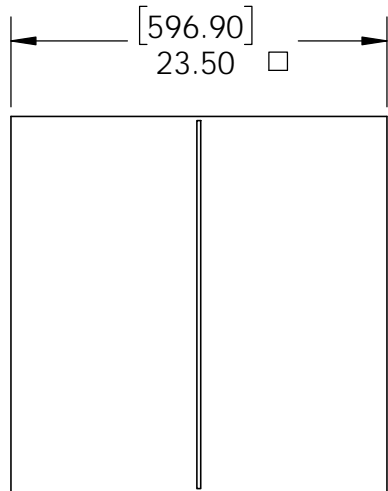
20550



Product & Packaging Specs

Cover, 20550 Display Shipping Box

Item #: Box



Material: Corrugated Paper
Finish: Natural
Weight: 2.70 LBS
Scale: 1:12
Last updated: 3/8/2017

20550

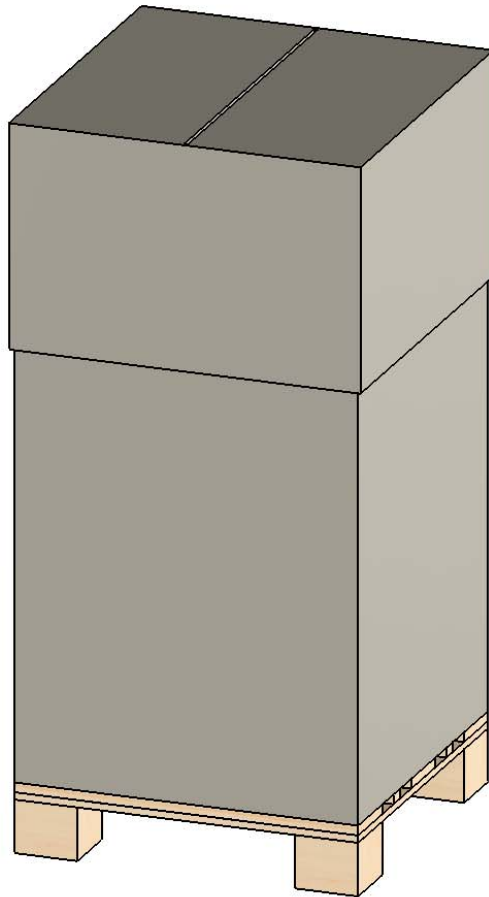


OZCO BUILDING PRODUCTS

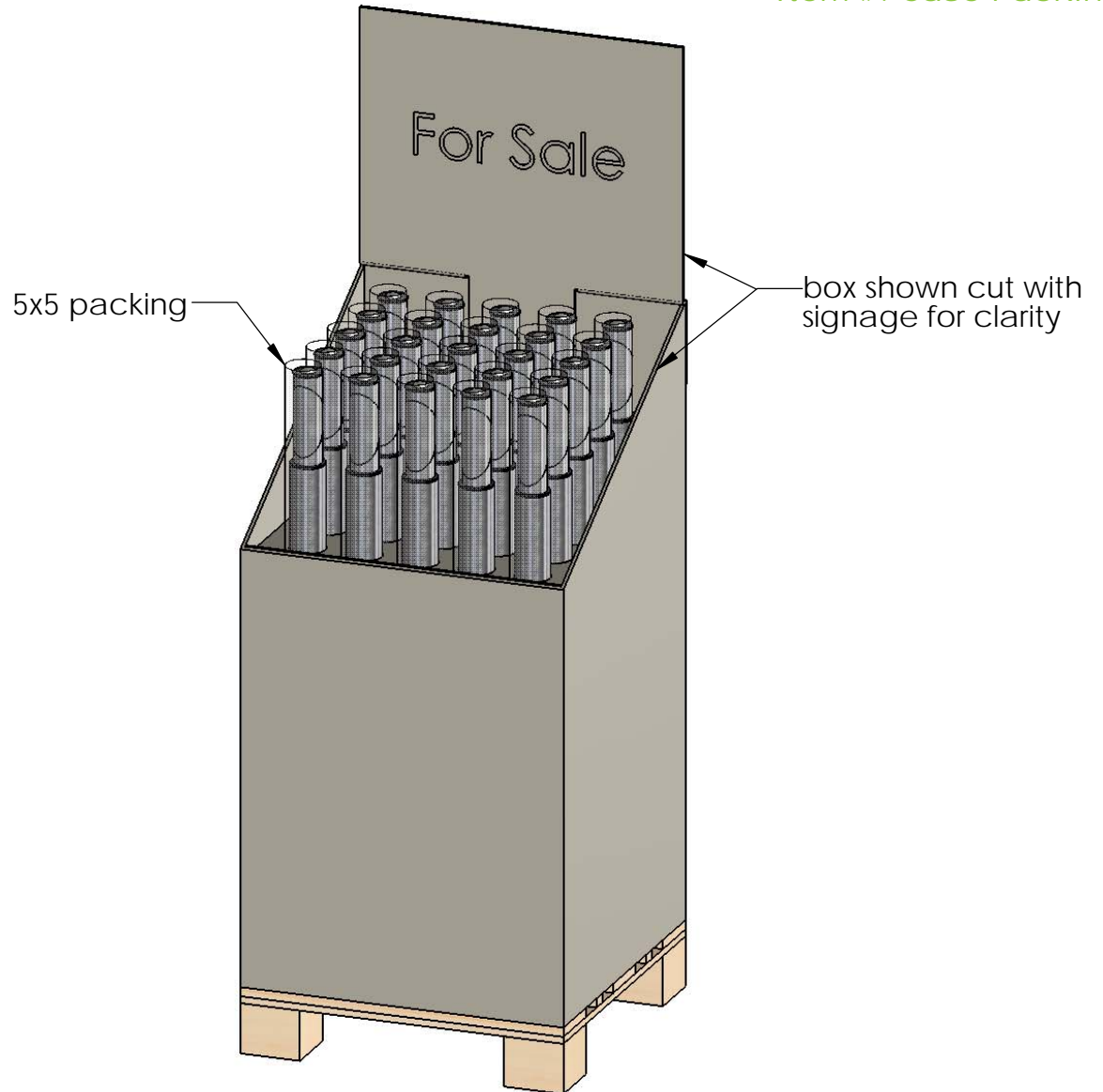
Product & Packaging Specs

20550 Packing

Item #: Case Packing



as shipped



Weight: 397.97 LBS
Scale: 1:12
Last updated: 3/8/2017

20550

V2.00 - Installation Instructions, Specifications and Project Plans are effective 3/8/2017 . This information is updated periodically and should not be relied upon after 2 years from 3/8/2017 . Please visit OZCOBP.com to get current information.

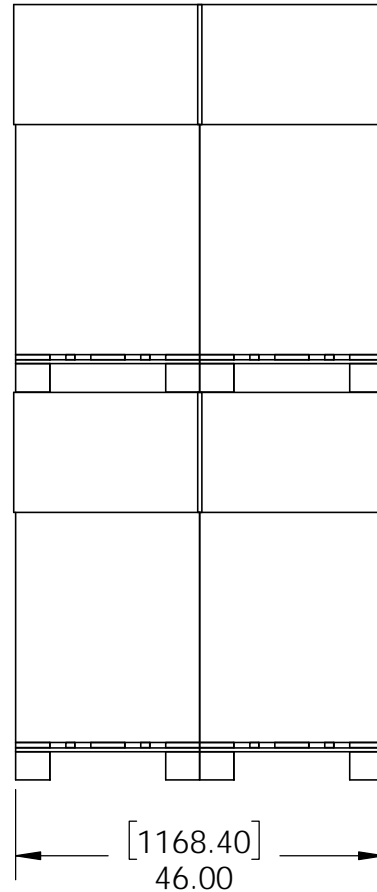
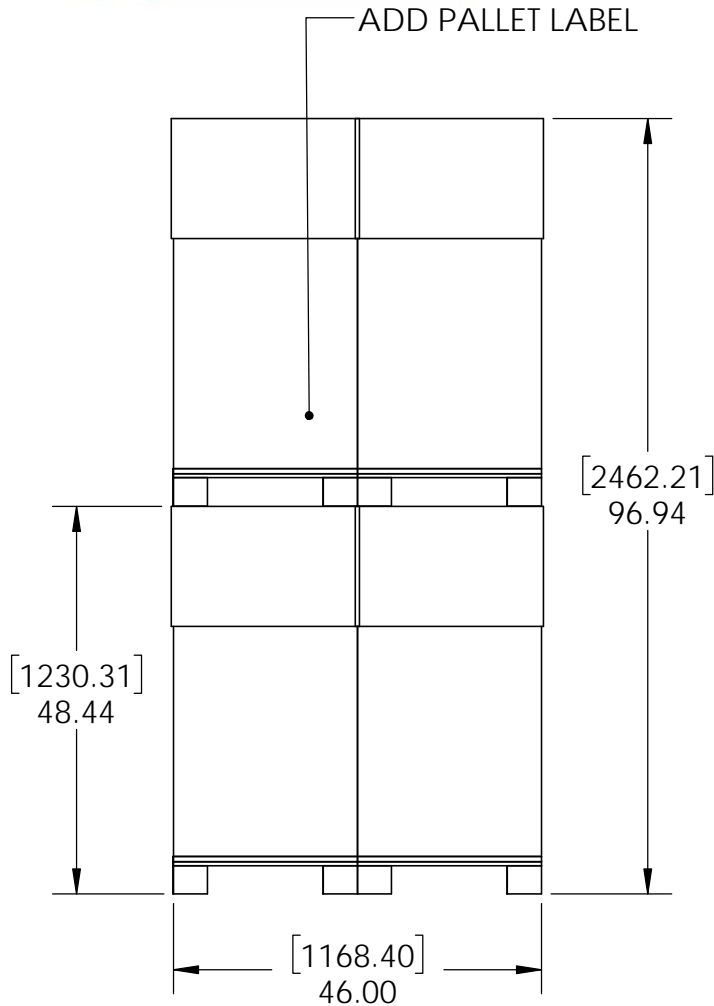


OZCO BUILDING PRODUCTS

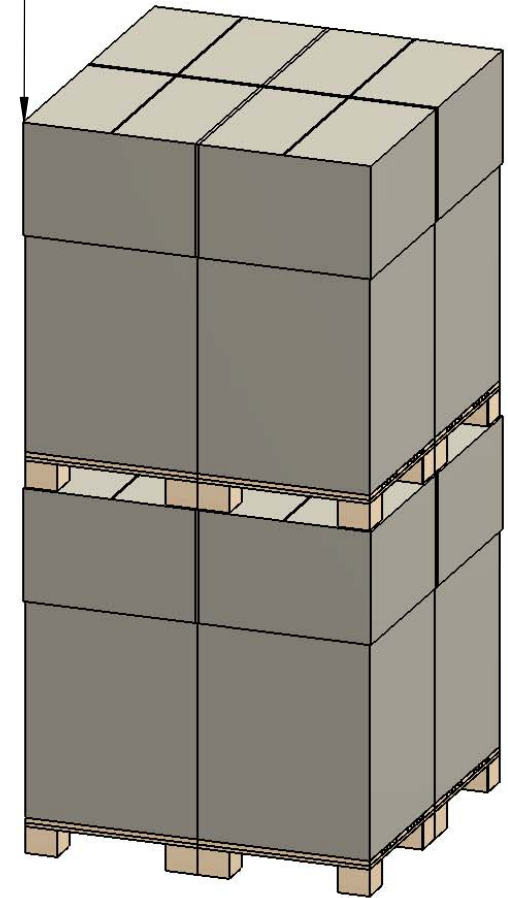
Product & Packaging Specs

20550 Pallet packing

Item #: Pallet packing



Total number of cases: 8
Total number of pieces:
 $25 \times 8 = 200$ pieces on pallet



additional pallet packing instructions

- plywood on top layer
- strap to pallet
- clear wrap around boxes



Weight: 3200 LBS
Scale: 1:24
Last updated: 3/8/2017

20550