



Item # 754902

Item # 755331

Item # 756321

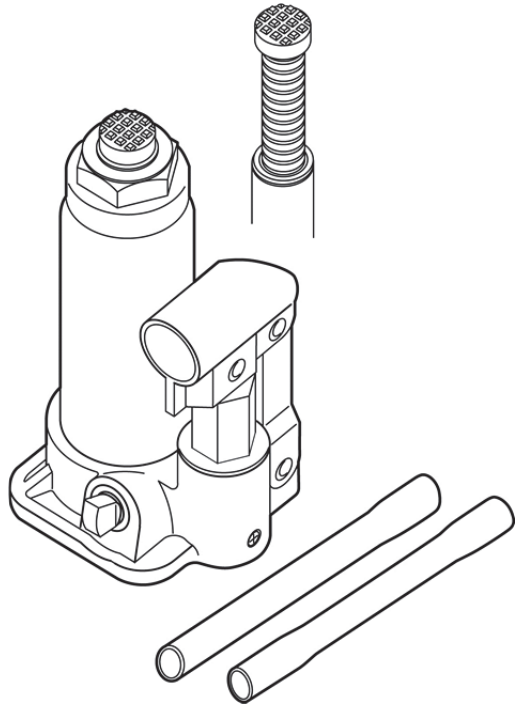
USE AND CARE GUIDE

6, 12 & 20 TON BOTTLE JACK

Questions, problems, missing parts?
Before returning to the store, call
Husky Customer Service
8 a.m.-6 p.m., EST, Monday-Friday

1-888-HD-HUSKY

WWW.HUSKYTOOLS.COM



THANK YOU

We appreciate the trust and confidence you have placed in Husky through the purchase of this bottle jack. We strive to continually create quality products designed to enhance your home. Visit us online to see our full line of products available for your home improvement needs. Thank you for choosing Husky!

Table of Contents

Safety Information.....	2	Care and Cleaning	6
Warranty	3	Inspection.....	6
Specifications.....	3	Maintenance.....	6
Package Contents	4	Checking oil level	6
Operation	5	Troubleshooting.....	8
How it works	5		
To raise and lower a vehicle.....	5		

Safety Information

SAVE THESE INSTRUCTIONS. READ ALL INSTRUCTIONS.

SAFETY MARKINGS

Safety marking shall conform to ANSI Z535 series of standards.

1. Study, understand and follow all instructions before operating this device
2. Do not exceed rated capacity.
3. Use only on hard level surfaces.
4. Lifting device only. Immediately after lifting, support the vehicle with appropriate means.
5. Failure to heed these markings may result in personal injury and/or property damage.

SAFETY MESSAGES

Additional safety messages include the following.

1. Lift only on areas of the vehicle as specified by the vehicle manufacturer.
2. No alterations shall be made to this product
3. Only attachments and/or adapters supplied by the manufacturer shall be used.



DANGER: Because of the potential hazards associated with the misuse of equipment of this type, no alterations shall be made to the product without written authorization of the manufacturer or supplier.



WARNING: This jack is a lifting device only. It is not a support device. NEVER place yourself under or near a raised vehicle supported by a jack. Immediately after lifting, support vehicle with jack stands or other appropriate means.



WARNING: For your safety and to prevent injury use service jack for lifting purposes only.



CAUTION: Do not move or dolly the vehicle while on the jack.



CAUTION: Any jack that appears to be damaged or has worn parts should be removed from service immediately.



IMPORTANT: Lift only on areas of the vehicle as specified by the vehicle manufacturer. Use vehicle manufacturers instructions on proper lifting.



IMPORTANT: Do not use bottle jack in direct contact with food or food ingredients.



NOTE: Center load on saddle prior to lifting.



NOTE: Use of bottle jack- on sea vessels is prohibited.



NOTE: Failure to heed these warnings may result in personal injury and/or property damage.



NOTE: Some vehicles require an adapter to properly engage the frame for lifting.

Warranty

The manufacturer warrants the products to be free from defects in materials and workmanship for a period of one (1) year from the date of purchase. This warranty applies only to the original consumer purchaser and only to products used in normal use and service. If this product is found to be defective, the manufacturer's only obligation, and your exclusive remedy, is the repair or replacement of the product at the manufacturer's discretion, provided that the product has not been damaged through misuse, abuse, accident, modifications, alteration, neglect or mishandling. This warranty shall not apply to any product as a result of an accident, misuse, abuse, negligence, alteration, faulty installation, or any other failure not relating to faulty material or workmanship. This warranty shall not apply to the finish on any portion of the products such as surface and/or weathering, as this is considered normal wear and tear.

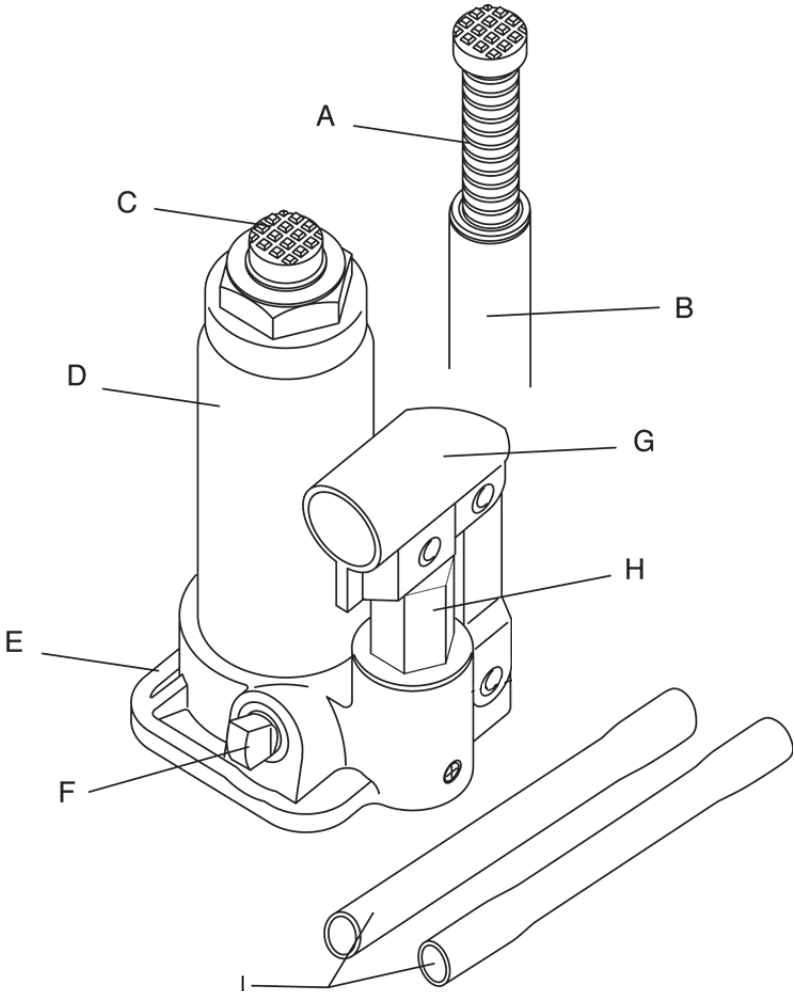
The manufacturer does not warrant and specially disclaims any warranty, whether express or implied, of fitness for a particular purpose, other than the warranty contained herein. The manufacturer specifically disclaims any liability and shall not be liable for any consequential or incidental loss or damage, including but not limited to any labor/expense costs involved in the replacement or repair of said product.

Contact the Customer Service at 1-888-HD-HUSKY or visit www.huskytools.com.

Specifications

Item#	Max Load Capacity	Lifting Range	Saddle Diameter	Jack Weight
754902	6 Ton / 12,000 lbs.	8-1/2 – 16-1/4 inches	1-1/4 inches	10.5 lbs.
755331	12 Ton / 24,000 lbs.	9-1/2 – 18-7/16 inches	1-5/8 inches	16.5 lbs.
756321	20 Ton / 40,000 lbs.	9-1/2 – 17 inches	1-7/8 inches	24.0 lbs.

Package Contents



Part	Description
A	Extension Screw
B	Ram
C	Saddle
D	Oil Tank
E	Base

Part	Description
F	Release Valve
G	Handle Socket
H	Plunger
I	Handle

Operation

HOW IT WORKS

The jack power unit consists of plunger, oil tank, cylinder and ram.

An upward stroke of the jack handle draws oil from the tank into the plunger. Hydraulic pressure closes a valve that keeps oil in the cavity.

A downward stroke of the jack handle forces oil in to the cylinder, pushing out the ram and raising the saddle. **NOTE:** As a protective feature, when the ram reaches maximum extension, sufficient oil passes back into the tank to prevent an overextended ram stroke and possible jack damage.

When the release valve is open, oil flows back into the tank, causing the ram to retract, lowering the saddle.

It is the owner and/or operators responsibility to study all warnings, operating and maintenance instructions found on the product sticker and instruction manual before using this unit. The owner/operators shall retain product instructions for future reference.

TO RAISE AND LOWER A VEHICLE

1 Placing the Vehicle in Park

- Place vehicle in **PARK** (in gear on standard transmissions) and apply emergency brake.



2 Closing the Jack Release Valve

- Close the jack release valve by turning the handle clockwise.



3 Blocking the Wheels

- Block the vehicle wheels for lifting stability.



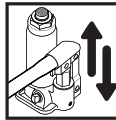
4 Centering the Jack

- Center jack under load so that saddle contacts load firmly and will not slip. (Refer to vehicle manufacturer's owner's manual to locate the approved lifting points on the vehicle.)



5 Pumping the Jack Handle

- Pump the jack handle until saddle nears contact with vehicle. Check to see that the saddle is centered and will contact the lifting point firmly.



6 Lifting the Vehicle

- Continue to pump the jack handle to lift the vehicle to a height slightly above the jack stands or other supports. Then turn the handle very slowly counterclockwise to open the release valve to lower the vehicle onto the supports.



WARNING: To avoid pinching or crushing hands or feet, **ALWAYS** keep them clear of the jack hinge and ground contact area when lowering the vehicle. The jack is a lifting device only. **DO NOT** move or dolly the vehicle while it is on the jack.

Care and Cleaning

INSPECTION

The product shall be maintained according to these instructions.

You may not alter this product in any way.

1. Before using, a thorough inspection shall be made on the jack. Look for leaking hydraulic fluid, cracks in the welds, bent, damaged, loose, worn or missing parts.
2. Inspect according to this manual ONLY.
3. If the jack has been subjected to abnormal load or shock (abuse), perform an immediate inspection. Take the product to a local customer service representative for an authorized inspection before use.

Maintenance

Monthly maintenance is recommended. Lubrication is critical to jacks as they support heavy loads. Any restriction due to dirt, rust, etc., can cause either slow movement or cause extremely rapid jerks, damaging the internal components. The following steps are designed to keep the jack well lubricated:

1. Lubricate the ram, linkages, saddle and pump mechanism with light oil. Grease bearings and axles.
2. Visually inspect for cracked welds, bent, loose, missing parts or hydraulic oil leaks.
3. Clean all surfaces and maintain all labels and warnings.
4. Check ram after each use for any sign of rust or corrosion. Clean as needed and wipe with an oil cloth. When not in use, always leave the saddle and ram all the way down.

Always store your jack in the fully lowered position. This will help protect the critical areas from excessive corrosion.

Do not use brake or transmission fluids or regular motor oil as they can damage the seals. Always purchase and use hydraulic jack oil.

CHECKING OIL LEVEL

1 Opening Release Valve

- Release valve must be turned counterclockwise to allow the ram to fully retract. You may need to press down on the saddle to lower.



2 Removing the Oil Plug

- Remove the oil plug (back of jack) while in a level position. Stand jack vertically with handle socket down. Oil should be level with the bottom of the fill hole.



3 Topping off Oil Level

- Top off, but do not overfill, if needed. Always use new, clean hydraulic jack oil.

4 Replacing the Plug

- Replace the oil plug.

5 Pumping the Handle

- Check to see if jack works by pumping handle up and down.

Troubleshooting

Problem	Possible Cause	Solution
Jack will not lift to full height	Low oil level	Check oil level
Jack will not hold load	Release valve not closing Hydraulic jack oil contaminated Pump valves not sealing Cylinder not sealing	Call customer service
Ram will not lower	Cylinder ram binding Parts worn Internal damage	Call customer service
Jack feels spongy when lifting	See Air Purge section	See Air Purge procedure

PURGING SYSTEM AIR OR CHANGING OIL WHEN TROUBLESHOOTING

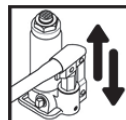
1 Opening Release Valve

- Turn release valve must be turned counterclockwise to allow the ram to fully retract.



2 Pumping the Handle

- Pump the handle eight full strokes



3 Closing Release Valve

- Turn release valve clockwise to close the valve



4 Pinch Oil Plug

- Slowly and carefully pinch oil plug to release trapped air.



5 Checking for Pump Action

- Jack feels not spongy when lifting



**Questions, problems, missing parts?
Before returning to the store,
call Husky Customer Service
8 a.m.-6 p.m., EST, Monday-Friday**

1-888-HD-HUSKY

WWW.HUSKYTOOLS.COM

Retain this manual for future use.

X0000000000-A