

Bridge Kitchen Faucet with Side Sprayer

Installation instruction



MB/BN/BG

CARE INSTRUCTIONS

Rinse the product with clear water. Dry the product with a soft cloth.

DO NOT:

Use abrasive cleansers, cloths, or paper towels. Use any cleaning agents containing acid, polish, wax, alcohol, ammonia, bleach, solvent or any other corrosive or harsh chemical cleansers.

RECOMMENDED TOOLS

Plumber's putty



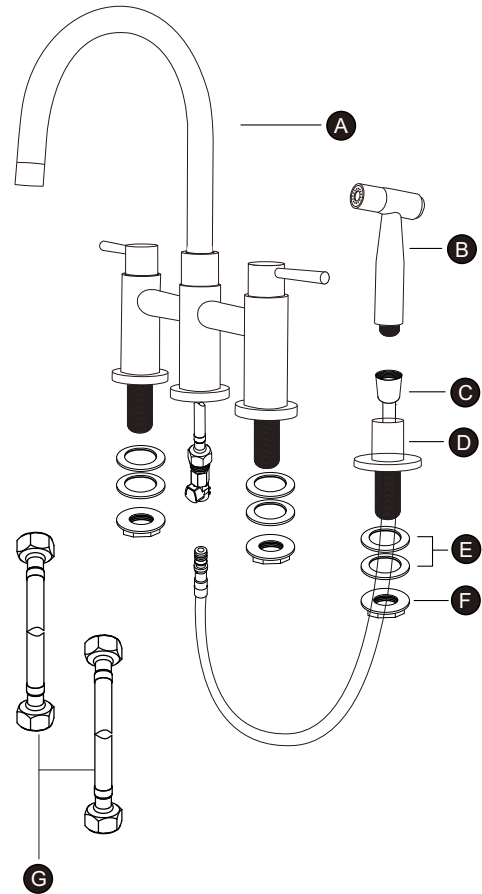
Thread seal tape



Included



PARTS LIST

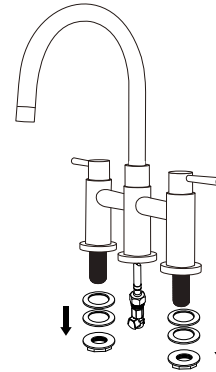


No. Description

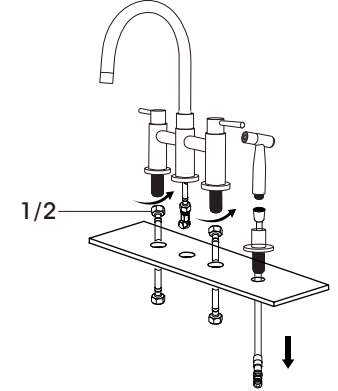
A	Faucet Body
B	Side Sprayer
C	Sprayer Hose
D	Sprayer Base
E	Rubber Washer
F	Mounting Nut
G	Cold / hot supply line

INSTALLATION STEPS

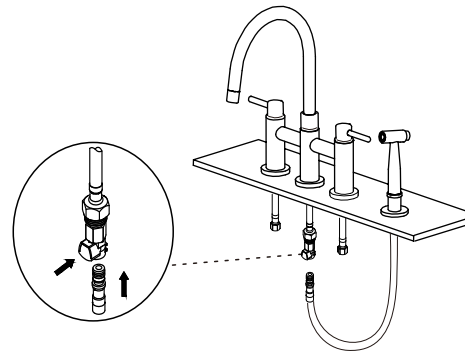
1 Demount the washer and mounting nut.



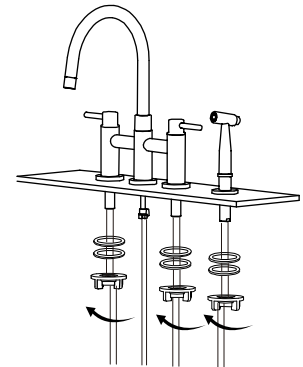
2 Connect the supply hose into the main water inlet hole.



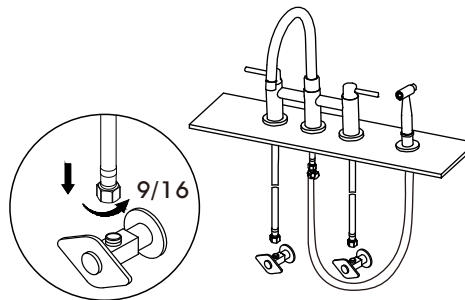
3 Connect the sprayer hose.



4 Rotate the gasket and nut to lock faucet.



5 Connect the supply hose to Angle valve.



6 Unscrew the net nozzle and flush.

