

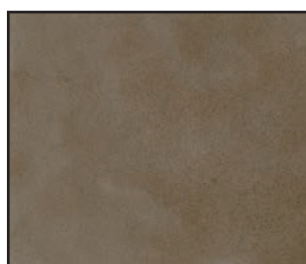


EAGLE

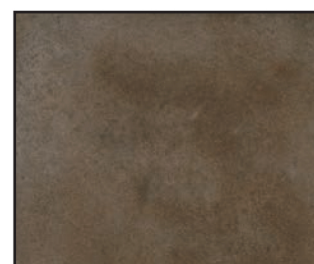
Concrete

ACID STAINS

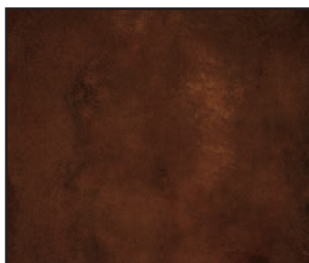
ACID STAINS create beautiful varied colors on cured concrete by reacting with the cement in the concrete surface. No two floors will look alike. The mottled and varied appearance of acid stained floors is common and also one of the big reasons the process has so much appeal. Sample stain for acceptability on actual floor before proceeding.



TAUPE



GRAPHITE



RUSTIC



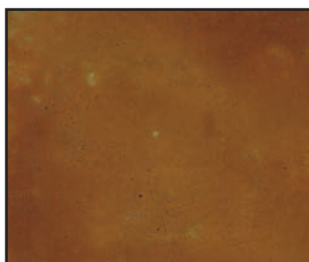
AMBER



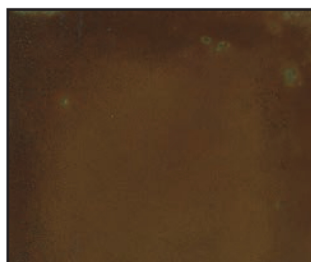
ONYX



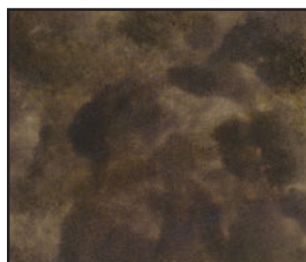
KODIAK



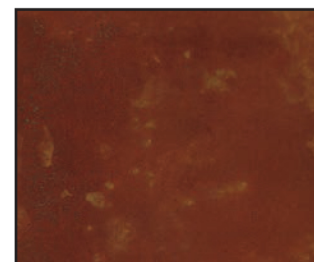
BRONZE



COPPER



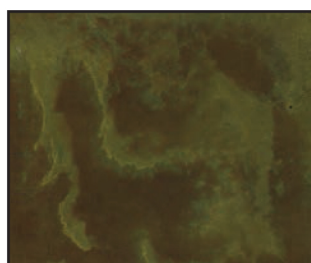
COCOA



GARNET



WHEAT



PATINA*



JADE*



AQUAMARINE*

* Interior use only

★ Available on [HomeDepot.com](https://www.homedepot.com) ★

ACID STAINS

TOOLS & MATERIALS REQUIRED

- ★ Acid resistant pump-up sprayer with conical tip
- ★ If masking: masking tape and wax-backed construction paper.
- ★ Synthetic-bristle brush.
- ★ Clean water for dilution and clean-up.
- ★ Eagle ETCH & CLEAN
- ★ Eagle DEGREASER NEUTRALIZER
- ★ Sealer: water-based Eagle ARMOR SEAL or solvent-based Eagle GLOSS COAT where VOC rules allow. On interior concrete, finish with Eagle Concrete Polish.
- ★ Eye protection, rubber gloves and respirator.

TEST BEFORE PROCEEDING

Test a small inconspicuous area of less than one square foot. Test to be sure color meets expectation. Test to be sure concrete is compatible. Test for water seep by taping plastic on one square foot of floor. Remove plastic the following day. If floor is wet, you should not stain and seal floor.

SURFACE PREPARATION

The most important step to a project is preparation of the surface. The concrete should be at least four weeks old, free from all debris, and clean. DO NOT USE MURIATIC ACID TO CLEAN as you will destroy the important minerals necessary to produce the color range selected. Strip and remove all previous sealers, paints, adhesives, and coatings. For oil spots use Eagle DEGREASER NEUTRALIZER (diluted 4 to 1) and rinse well. Use Eagle ETCH & CLEAN (diluted 4 to 1) to prepare concrete for acid staining. Rinse well. All repairs should be completed prior to starting the application of stain; coatings of any kind must be removed prior to staining. Mask for over-spray with masking tape and water resistant construction paper. Duct tape over masking tape to prevent bleeding.

APPLICATION

Eagle acid resistant sprayer should be used. Tape off walls or other areas to avoid overspray. Dampen concrete with water but do not puddle. Spray in an overlapping manner, maintaining a wet edge. Allow ACID STAIN to react for at least 6 hours. Clean residue and pour water on floor to approximate the final color. If darker color is desired, apply second coat. Concrete must be fully Neutralized! Clean residue from floor with Eagle DEGREASER NEUTRALIZER using an acid brush. Repeat. Rinse with clean water and mop up excess water. A Wet-Vac may be used. Rinse with clean water until rinse water is free of color and you can wipe floor without picking up color. Concrete must be completely free of residue. Expect to rinse with clean water several times. Once dry, test the readiness of the concrete by wiping floor with a white cloth. If it shows residue rinse and dry again. Repeat until no residue remains.

SEALING

Allow concrete 24 hours to dry. Clear sealer is required to enhance the depth of color and should be tested before application. On exterior floors, seal with solvent-based Eagle GLOSS COAT if local VOC rules allow. Alternatively, use water-based Eagle ARMOR SEAL. For interior floors, after sealing, apply Eagle CONCRETE POLISH for additional protection and enhancement. Use of Eagle CONCRETE POLISH will diminish slipping and scuffing. Eagle CONCRETE POLISH should be applied with a lamb's wool applicator or microfiber pad. As a maintenance routine, clean with water only and use Eagle CONCRETE POLISH to prevent the need to reapply sealer.

COVERAGE

Coverage is dependent on the age, porosity, weather, and composition of the concrete. A definite coverage rate cannot be determined because every scenario is different. However, as a general rule, 200-400 square feet per gallon should be average. If diluted 1:1, coverage will yield 400-800 square feet per gallon but final colors will vary from color chart.

TECHNICAL DATA

VOC: <0 g/L
Flash Point: N/A

HMIS

Health	1	Flammability	0
Reactivity	1	Protection	G

DISCLAIMER: Since manufacturer has no control over handling, use or storage, no guarantee expressed or implied is offered. Eagle IFP Company warrants the product to be free of defects and will replace or refund the purchase price of said products proven defective. Labor cost and/or other consequential damages are not covered by this warranty. Responsibility for claims of any kind is strictly limited to the purchase price of the product. The suitability of the product for any extended use shall be solely up to the user.

Made in U.S.A.

EAGLE IFP COMPANY

www.eaglesealer.com ★ Nashville, TN ★ Fax: 615-872-9052 ★ Tel: 615-872-2710