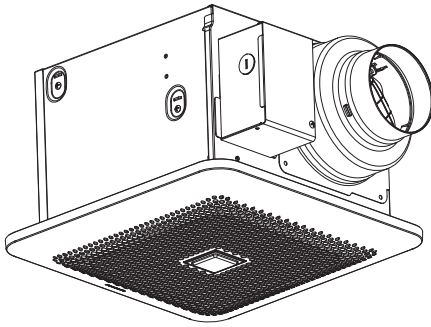
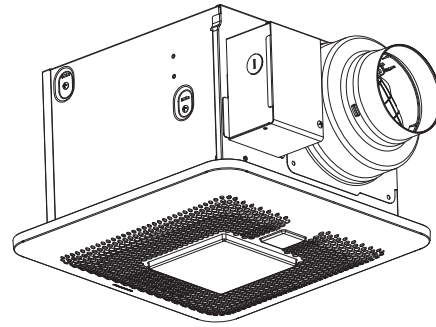


Service Manual

Ventilating Fan
(North America Market)



FV-0811RQC1



FV-0811RQCL1

⚠ WARNING

This service information is designed for experienced repair technicians only and is not designed for use by the general public. It does not contain warnings or cautions to advise non-technical individuals of potential dangers in attempting to service a product. Products powered by electricity should be serviced or repaired only by experienced professional technicians. Any attempt to service or repair the product or products dealt with in this service information by anyone else could result in serious injury or death.

IMPORTANT SAFETY NOTICE

There are special components used in this equipment which are important for safety. These parts are marked by ⚠ in the Schematic Diagrams, Exploded Views and Replacement Parts List. It is essential that these critical parts should be replaced with manufacturer's specified parts to prevent shock, fire or other hazards. Do not modify the original design without permission of manufacture. We suggest to handle such parts after the static electricity prevention. It is forbidden to touch the PCB parts by bare hands during the repairing process.

CONTENTS	PAGE
1.Specifications-----	1
2.Parts Identification-----	2~5
3.Wiring Diagram-----	6
4.Parts List-----	7~10

1. Specifications

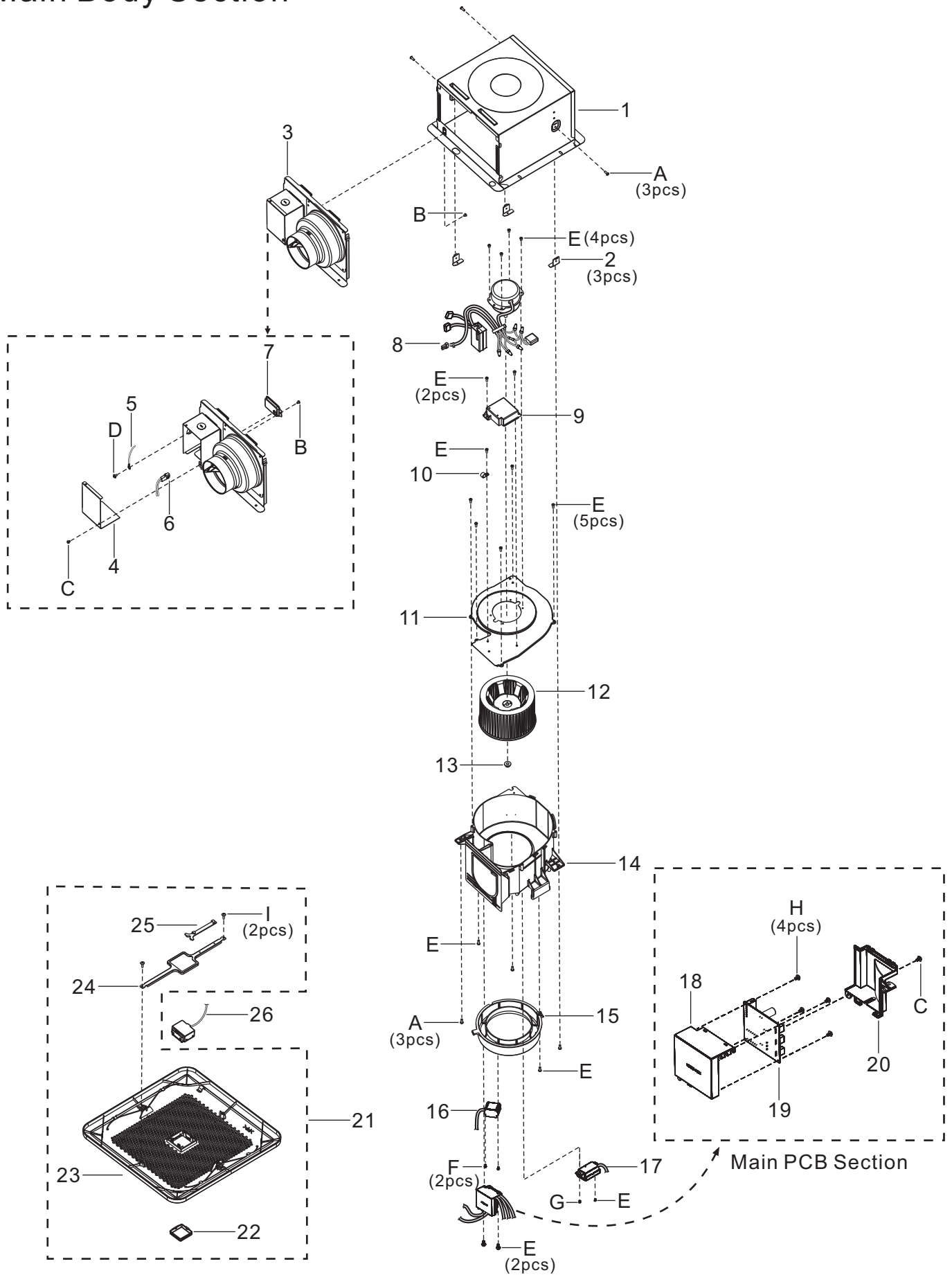
Model No.	Air direction	Voltage (V)	Frequency (Hz)	Duct diameter (inches)	Air volume at 0.1"WG (CFM)	Noise (sones)	Speed (rpm)	Power (W)	Weight lb.(kg)
FV-0811RQC1	Exhaust	120	60	4	80	< 0.3	815	17.6	11.0 (5.0)
					110	0.4	961	22.6	
FV-0811RQCL1	Exhaust	120	60	4	80	< 0.3	865	18.4	11.7 (5.3)
					110	0.6	1019	23.9	

HVI Certified performance based on HVI Procedures 915, 916, and 920.

2. Parts Identification

FV-0811RQC1

Main Body Section



2. Parts Identification

FV-0811RQC1

Main Labels



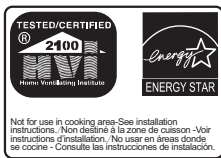
27



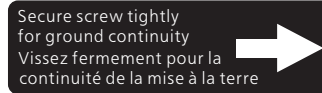
29



30

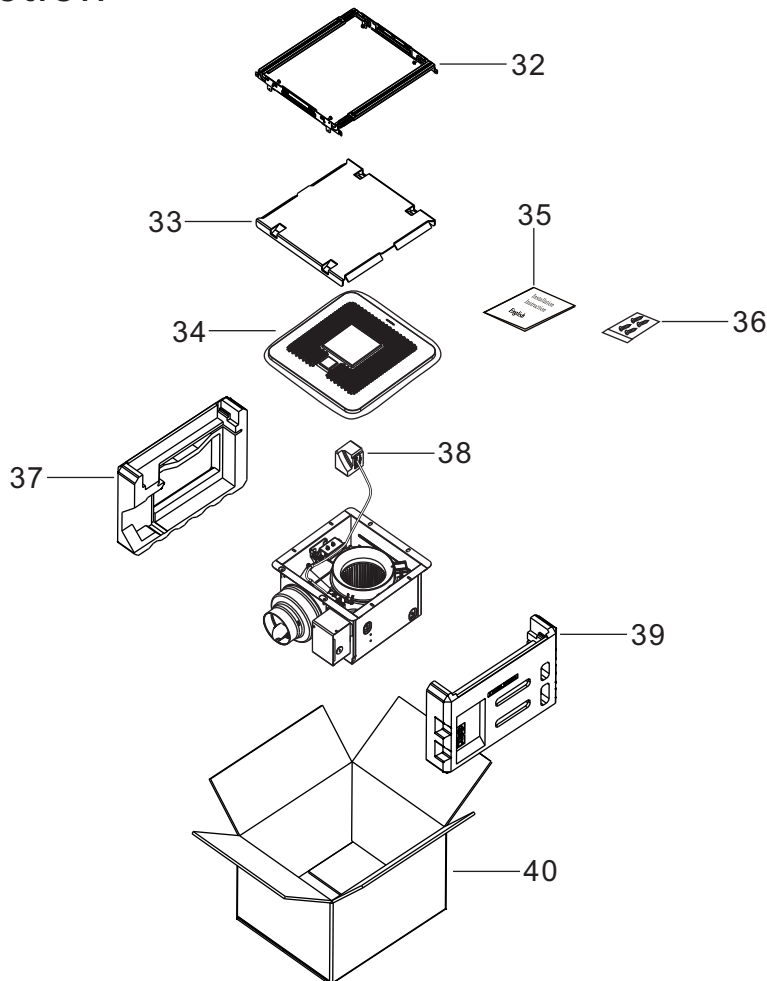


28



31

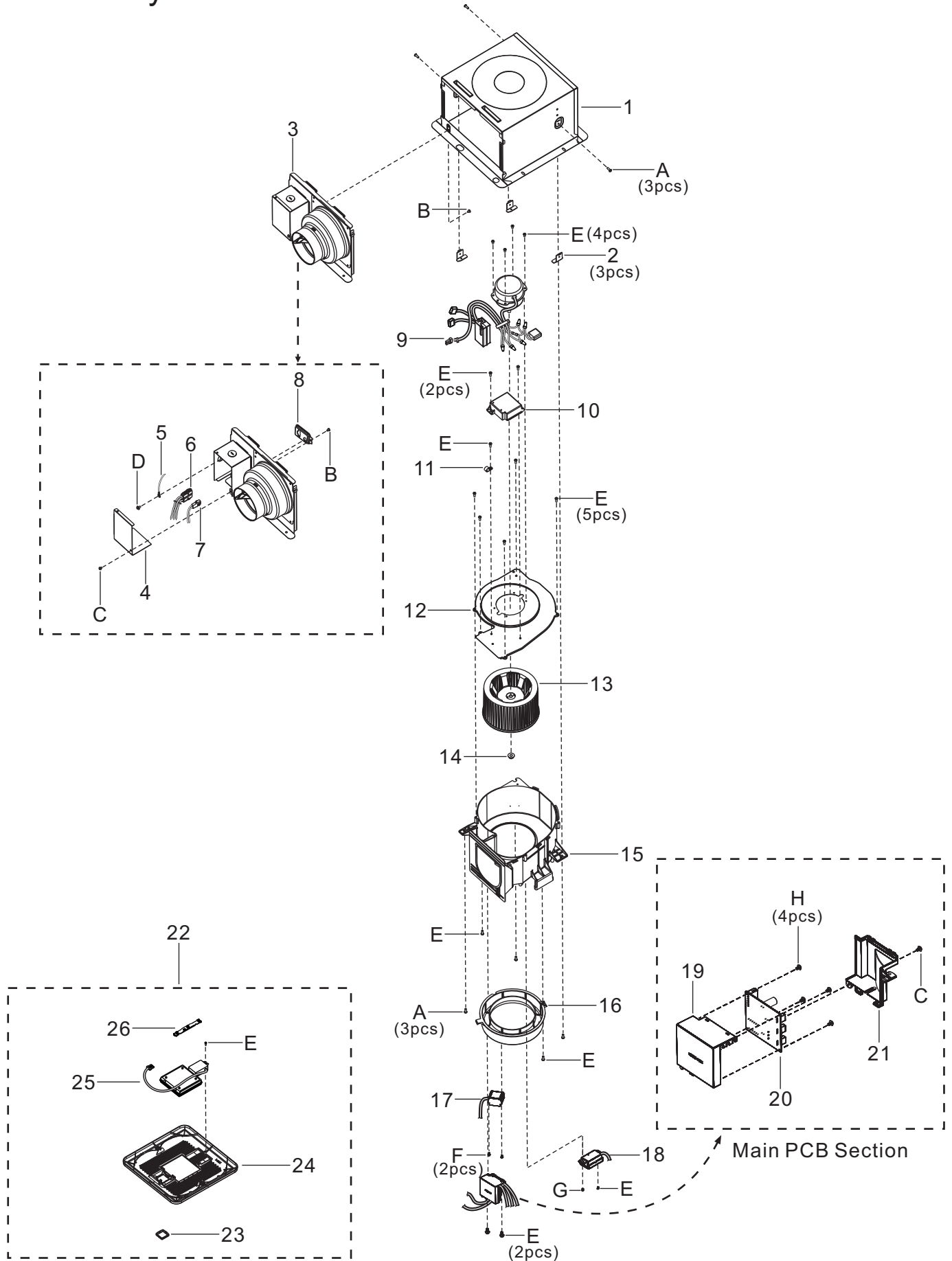
Packing Section



2. Parts Identification

FV-0811RQCL1

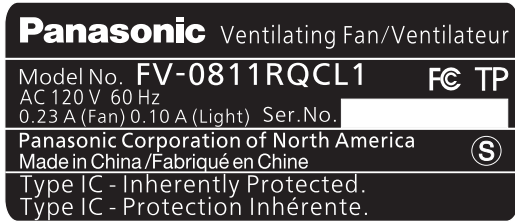
Main Body Section



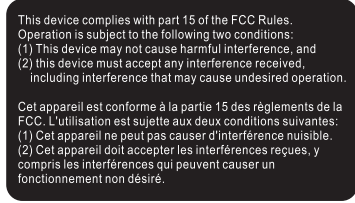
2. Parts Identification

FV-0811RQCL1

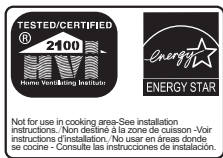
Main Labels



27



31



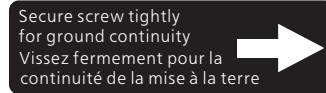
28



29

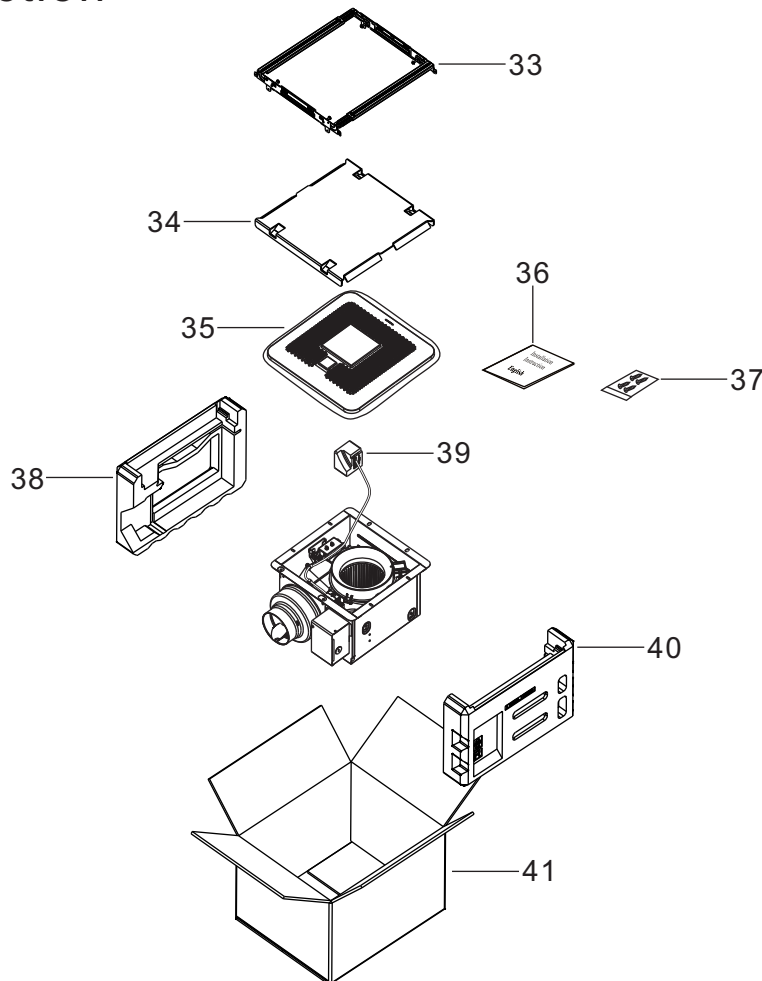


30



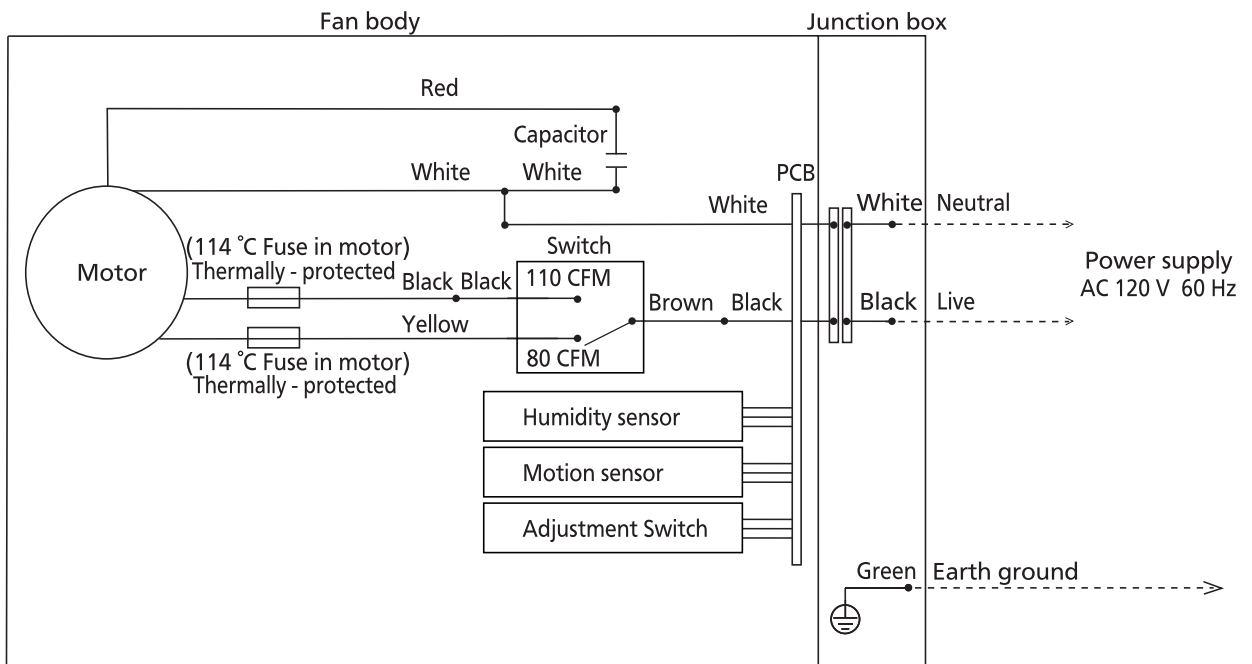
32

Packing Section

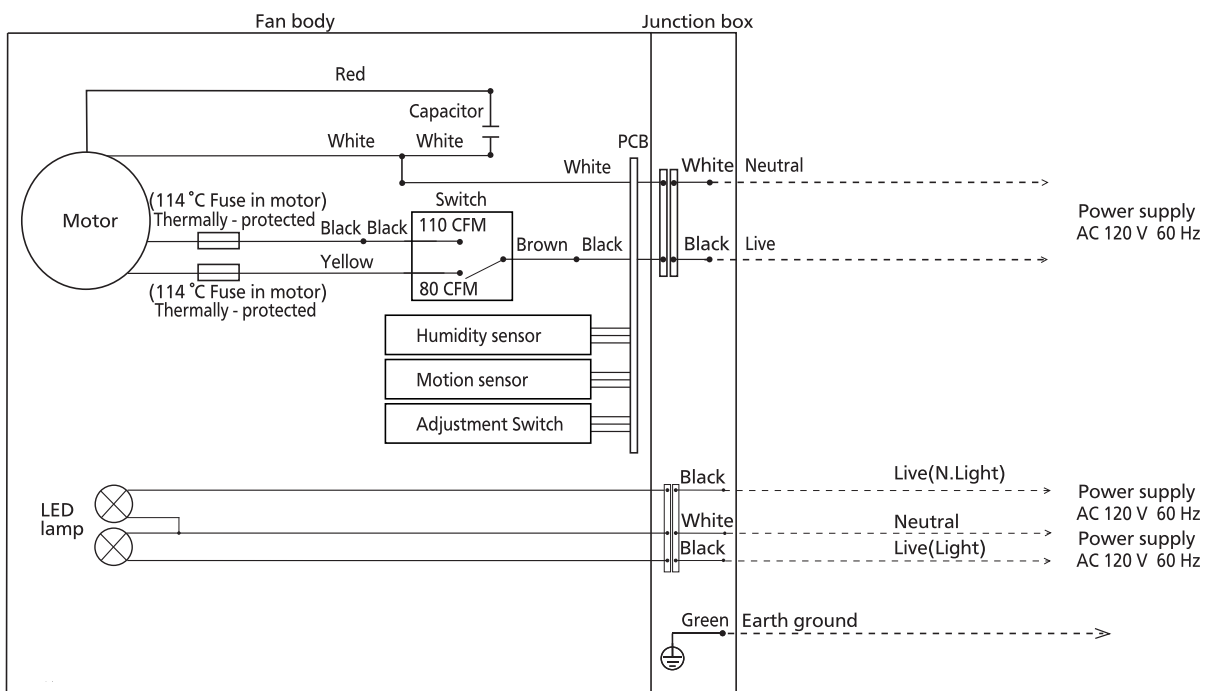


3. Wiring diagram

FV-0811RQC1



FV-0811RQCL1



4. Parts List

FV-0811RQC1

Main Body Section

No.	Part No.	Part Name	Q'ty	Remark
1	FFV1600138S	Frame Assy	1	
2	FFV0800001S	Casing Support	3	
3	FFV0000179S	Adapter Assy	1	⚠
4	FFV2800012S	Junction Cover	1	
5	FFV3450010S	Earth Lead Wire	1	⚠
6	FFV0900072S	Connector Assy (V)	1	⚠
7	FFV0900052S	Connector Plate	1	
8	FFV3702325S	Motor Unit	1	⚠
9	FFV0760062S	Condenser Box	1	
10	FFV0960001S	Nylon Clamp	1	
11	FFV3730139S	Motor Support Unit	1	
12	FFV0400103S	Blade	1	
13	FFV7020021S	Nut	1	
14	FFV0790126S	Casing Unit	1	
15	FFV4300160S	Orifice	1	
16	FFV2220053S	Humid Sensor Assy	1	⚠
17	FFV5530065S	Switch Assly	1	⚠
18	FFV3740021S	Main PCB Box	1	
19	FFV3740022S	Main PCB Assey	1	⚠
20	FFV3740023S	Main PCB Cover	1	
21	FFV3400162S	Louver Section	1	
22	FFV2220051S	Sensor Cover	1	
23	FFV3400163S	Louver Unit	1	
24	FFV5560051S	Spring Stopper	1	
25	FFV2520025S	Insulation Plate	1	
26	FFV5500045S	Sensor Assembly	1	⚠
A	FFV7000065S	Bind Screw	6	
B	FFV7000108S	Truss Tap Screw	2	
C	FFV7000064S	Bind Screw	1	
D	FFV7000203S	Earth Lead Wire Screw	1	⚠
E	FFV7000089S	Truss Tap Screw	17	
F	FFV7000195S	Pan Tap Screw	2	
G	FFV7000074S	Truss Tap Screw	1	
H	FFV7000145S	Truss Tap Screw	4	
I	FFV7000140S	Pan Tap Screw	2	

4. Parts List

FV-0811RQC1

Main Labels

No.	Part No.	Part Name	Q'ty	Remark
27	FFV4020947S	Name Plate	1	
28	FFV0810011S	Caution Label 1	1	
29	FFV2260003S	UL Mark	1	
30	FFV0810010S	Caution Label	1	
31	FFV6730045S	Warning Label	1	

Packing Section

No.	Part No.	Part Name	Q'ty	Remark
32	FFV2230024S	Hanger Assembly	1	
33	FFV4710381S	Louver Case Assy	1	
34	FFV4650016S	Poly Cover	1	
35	FFV2540233S	Installation Instructions	1	English,For CA Market/USA Market
36	FFV0010238S	Accessory A	1	
37	FFV4710382S	Left Pad	1	
38	FFV4710330S	Sensor Pad	1	
39	FFV4710383S	Right Pad	1	
40	FFV9001391S	Packing Case	1	

4. Parts List

FV-0811RQCL1

Main Body Section

No.	Part No.	Part Name	Q'ty	Remark
1	FFV1600138S	Frame Assy	1	
2	FFV0800001S	Casing Support	3	
3	FFV0000181S	Adapter Assy	1	⚠
4	FFV2800012S	Junction Cover	1	
5	FFV3450010S	Earth Lead Wire	1	⚠
6	FFV0900069S	Connector Assy (L)	1	⚠
7	FFV0900059S	Connector Assembly(V)	1	⚠
8	FFV0900074S	Connector Plate	1	
9	FFV3702326S	Motor Unit	1	⚠
10	FFV0760062S	Condenser Box	1	
11	FFV0740027S	Nylon Clamp	1	
12	FFV3730140S	Motor Support Unit	1	
13	FFV0400103S	Blade	1	
14	FFV7020021S	Nut	1	
15	FFV0790126S	Casing Unit	1	
16	FFV4300160S	Orifice	1	
17	FFV2220053S	Humid Sensor Assy	1	⚠
18	FFV5530065S	Switch Assly	1	⚠
19	FFV3740021S	Main PCB Box	1	
20	FFV3740022S	Main PCB Assey	1	⚠
21	FFV3740023S	Main PCB Cover	1	
22	FFV3400164S	Louver Section	1	⚠
23	FFV2220051S	Sensor Cover	1	
24	FFV3400165S	Louver Unit	1	
25	FFV3400148S	Led Unit	1	⚠
26	FFV2520040S	Insulation Plate	1	
A	FFV7000065S	Bind Screw	6	
B	FFV7000108S	Truss Tap Screw	2	
C	FFV7000064S	Bind Screw	1	
D	FFV7000203S	Earth Lead Wire Screw	1	⚠
E	FFV7000089S	Truss Tap Screw	18	
F	FFV7000195S	Pan Tap Screw	2	
G	FFV7000074S	Truss Tap Screw	1	
H	FFV7000145S	Truss Tap Screw	4	

4. Parts List

FV-0811RQCL1

Main Labels

No.	Part No.	Part Name	Q'ty	Remark
27	FFV4020948S	Name Plate	1	
28	FFV0810011S	Caution Label 1	1	
29	FFV2260003S	UL Mark	1	
30	FFV0810010S	Caution Label	1	
31	FFV6730109S	FCC Label	1	
32	FFV6730045S	Warning Label	1	

Packing Section

No.	Part No.	Part Name	Q'ty	Remark
33	FFV2230024S	Hanger Assembly	1	
34	FFV4710381S	Louver Case Assy	1	
35	FFV4650016S	Poly Cover	1	
36	FFV2540234S	Installation Instructions	1	English,For CA Market/USA Market
37	FFV0010238S	Accessory A	1	
38	FFV4710382S	Left Pad	1	
39	FFV4710330S	Sensor Pad	1	
40	FFV4710383S	Right Pad	1	
41	FFV9001392S	Packing Case	1	