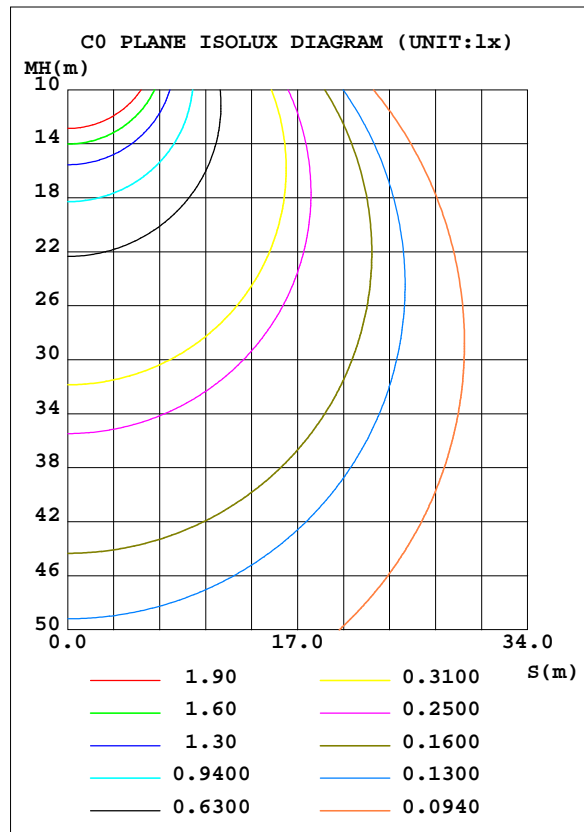
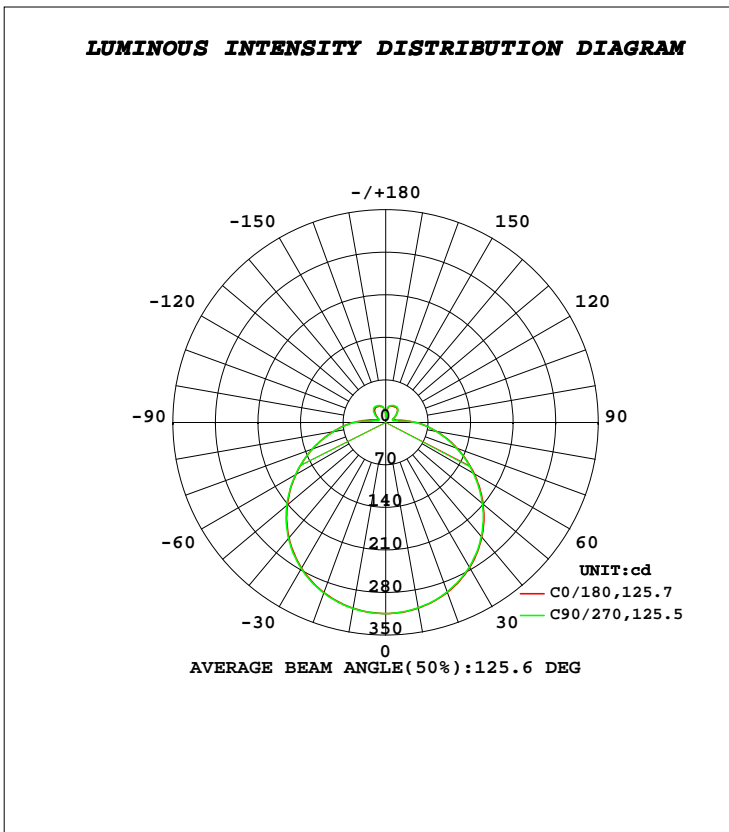


LUMINAIRE PHOTOMETRIC TEST REPORT

Test:U:120.13V I:0.1464A P:17.300W PF:0.9837 Freq:60.00Hz Lamp Flux:1244.71x1 lm		
NAME:SM-CA8aA018ER1A-TCN	TYPE:	WEIGHT:
SPEC.:	DIM.:	SERIAL No.:
MFR.: ETA	SUR.:	Shielding Angle:

DATA OF LAMP		PHOTOMETRIC DATA Eff: 71.95 lm/W			
MODEL		I <sub>max</sub> (cd)	314.5	S/MH(C0/180)	1.31
NOMINAL POWER(W)		LOR(%)	100.0	S/MH(C90/270)	1.32
RATED VOLTAGE(V)	120	TOTAL FLUX(lm)	1244.7	η UP, DN(C0-180)	6.1,43.6
NOMINAL FLUX(lm)	1244.71	CIE CLASS	SEMI-D.	η UP, DN(C180-360)	6.1,44.2
LAMPS INSIDE	1	η up(%)	12.2	CIBSE SHR NOM	1.50
TEST VOLTAGE(V)	120	η down(%)	87.8	CIBSE SHR MAX	1.50



C Range: 0 - 360DEG  
 C Interval: 22.5DEG  
 Test Speed: HIGH  
 Temperature:22.3DEG  
 Operators:JY  
 Test Date:01 July 2020

γ Range: 0 - 180DEG  
 γ Interval: 1.0DEG  
 Test System:EVERFINE GO-R5000\_V2 SYSTEM V2.00.421  
 Humidity:40.4%  
 Test Distance:1.134m [K=1.0000]  
 Remarks: