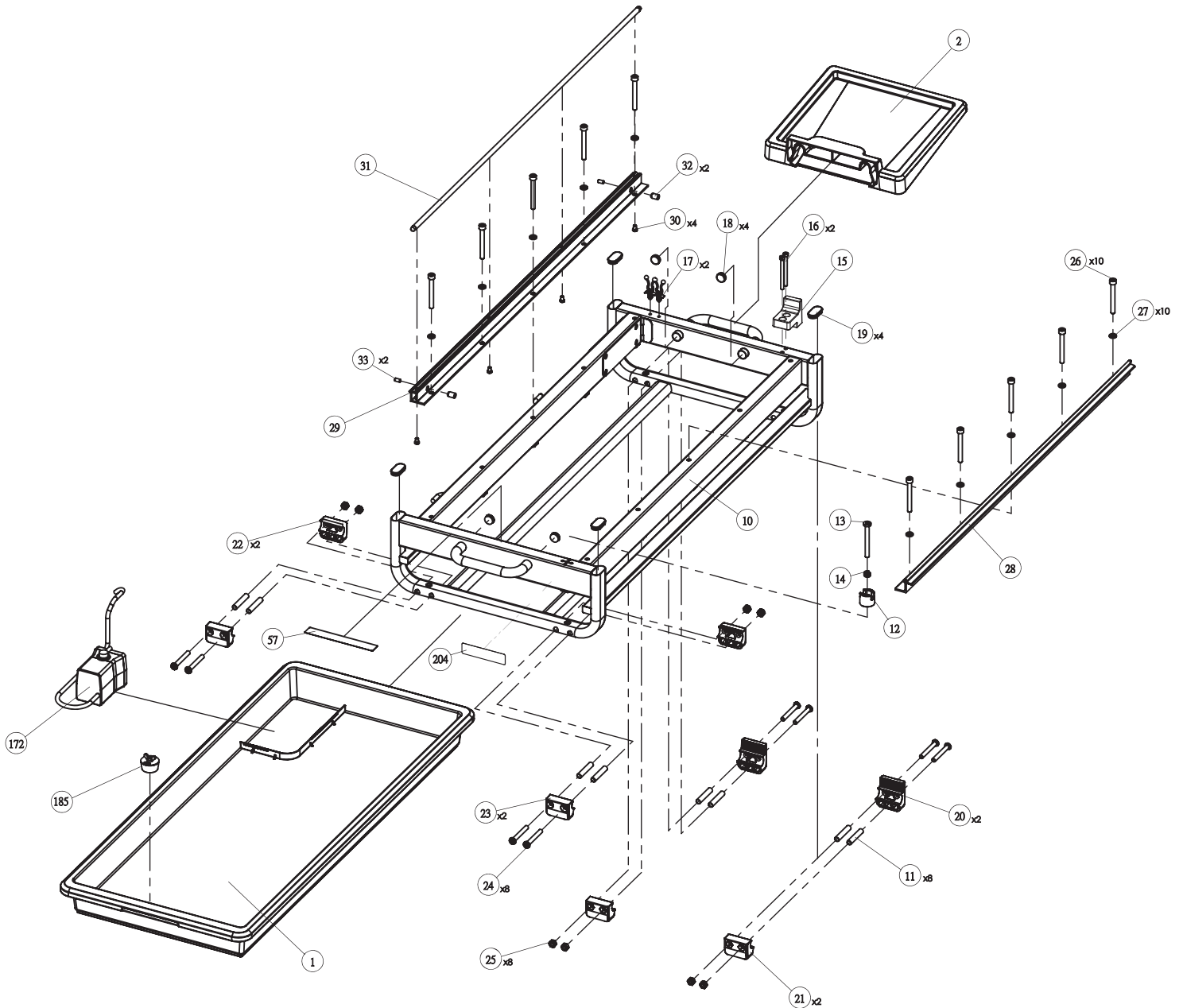




MODEL 96-110

10 IN TILE SAW

WTS-9
PART #:DPEC005561
DATE: 09-09-2019
REVISED: 10-25-2019

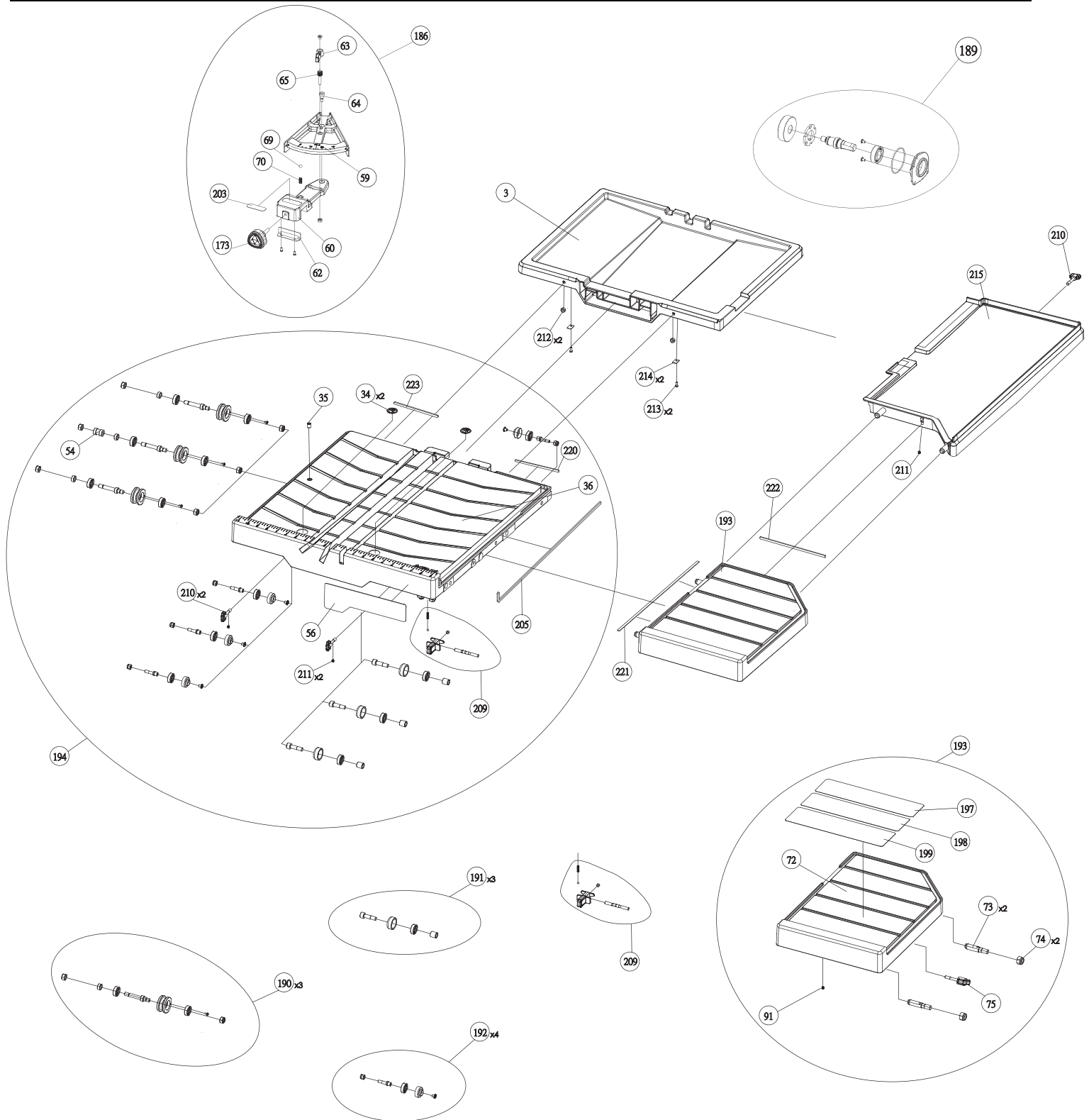




WTS-9
PART #: DPEC005561
DATE: 09-09-2019
REVISED: 10-25-2019

MODEL 96-110

10 IN TILE SAW

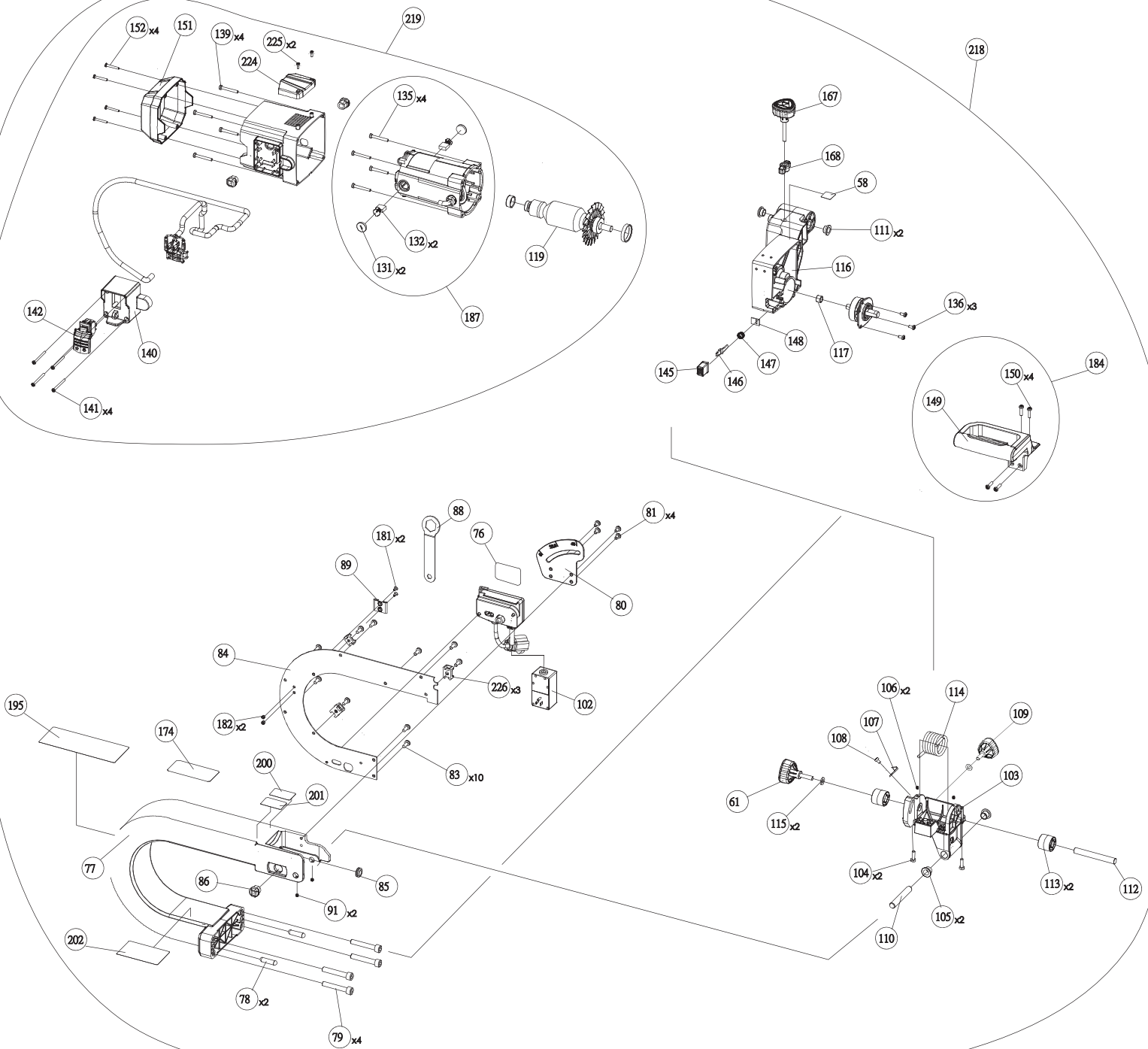




WTS-9
PART #:DPEC005561
DATE: 09-09-2019
REVISED: 10-25-2019

MODEL 96-110

10 IN TILE SAW





WTS-9

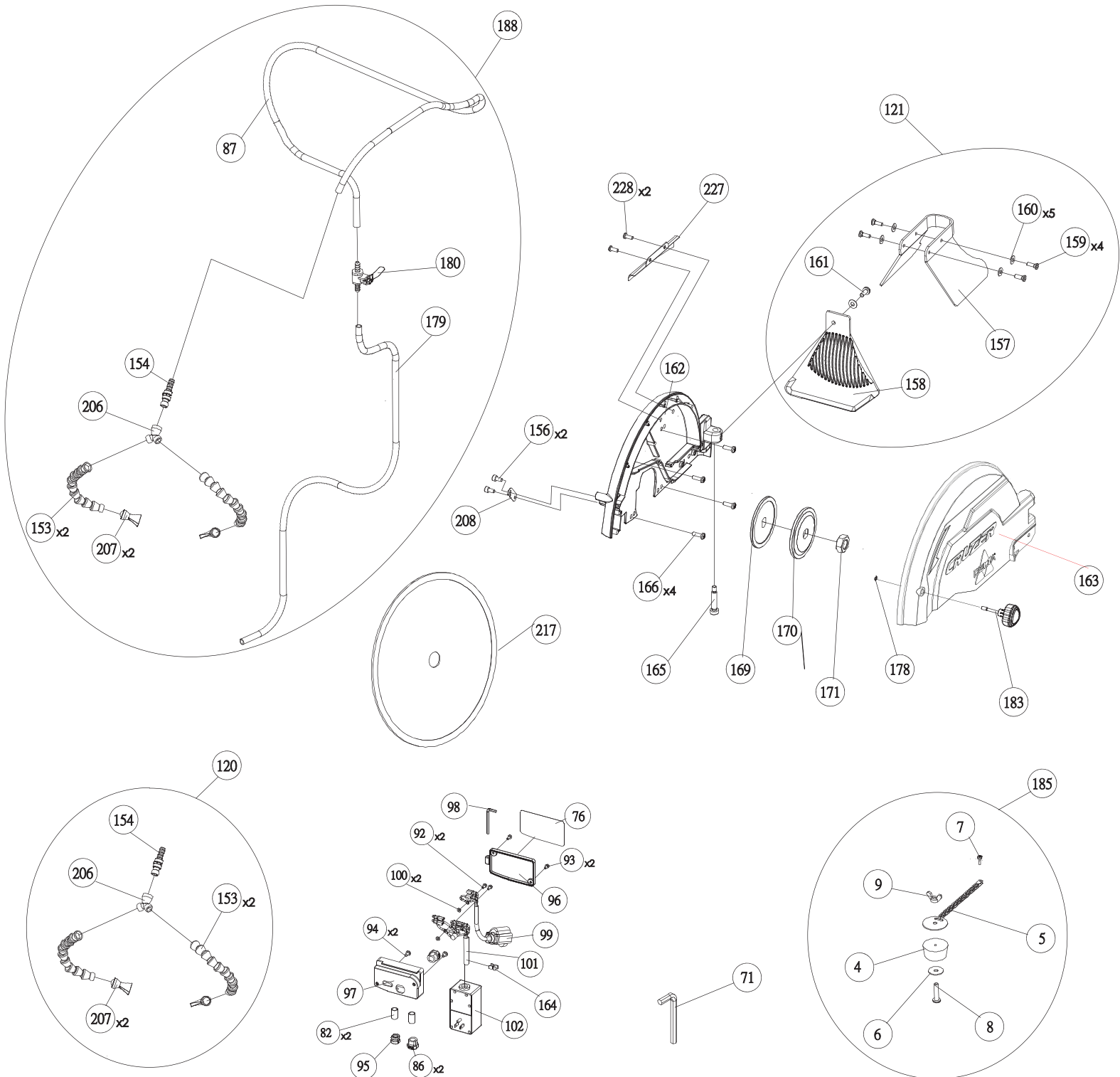
PART #:DPEC005561

DATE: 09-09-2019

REVISED: 10-25-2019

MODEL 96-110

10 IN TILE SAW



REPLACEMENT PARTS

| ITEM # | DELTA PART # | DESCRIPTION | QTY | ITEM # | DELTA PART # | DESCRIPTION | QTY |
|--------|--------------|---------------------------------|-----|--------|--------------|--|-----|
| 1 | DPEC005998 | Water Tray | 1 | 82 | DPEC003915 | Sleeve | 2 |
| 2 | DPEC004774 | Lower Spill Tray | 1 | 83 | DPEC005605 | Torx Screw | 10 |
| 3 | DPEC005288 | Upper Spill Tray | 1 | 84 | DPEC003921 | Arm Cover | 1 |
| 4 | DPEC003869 | Drain Plug Assembly | 1 | 85 | DPEC003922 | Junction Ring | 1 |
| 5 | DPEC003870 | Chain | 1 | 86 | DPEC003923 | Strain Relief | 3 |
| 6 | DPEC005595 | Flat Washer | 1 | 87 | DPEC003926 | Water Hose - Head | 1 |
| 7 | DPEC003872 | Torx Plastic Self Tapping Screw | 1 | 88 | DPEC003927 | Blade Wrench | 1 |
| 8 | DPEC005453 | Torx Screw | 1 | 89 | DPEC003928 | Blade Wrench Storage Bracket | 1 |
| 9 | DPEC005454 | Wing Nut | 1 | 91 | DPEC005606 | Set Screw | 3 |
| 10 | DPEC003875 | Main Frame Assembly | 1 | 92 | DPEC004754 | Torx Screw | 2 |
| 11 | DPEC003876 | Foot Pad Sleeve | 8 | 93 | DPEC003930 | Torx Plastic Self Tapping Screw | 2 |
| 12 | DPEC003877 | Front Table Stop Bracket | 1 | 94 | DPEC005626 | Torx Screw | 2 |
| 13 | DPEC003878 | Front Table Stop Screw | 1 | 95 | DPEC003565 | Cable Clamp | 1 |
| 14 | DPEC003879 | Table Stop Bracket Spring | 1 | 96 | DPEC003932 | Electrical Box Cover | 1 |
| 15 | DPEC003880 | Rear Stop Bracket | 1 | 97 | DPEC003933 | Electrical Box | 1 |
| 16 | DPEC005596 | Hex Socket Screw | 2 | 98 | DPEC005466 | M4 Hex Wrench | 1 |
| 17 | DPEC003882 | Twist Clip | 2 | 99 | DPEC003934 | Pump Power Supply | 1 |
| 18 | DPEC003543 | Flat Tube Cap | 4 | 100 | DPEC005469 | Tooth Washer | 2 |
| 19 | DPEC003620 | Ellipse Tube Cap | 4 | 101 | DPEC003935 | Power Cord | 1 |
| 20 | DPEC003885 | Rear Stop Foot Pad | 2 | 102 | DPEC003936 | Circuit Breaker | 1 |
| 21 | DPEC003886 | Rear Foot Pad | 2 | 103 | DPEC005987 | Pivot Bracket | 1 |
| 22 | DPEC003887 | Front Locating Foot Pad | 2 | 104 | DPEC005607 | Hex Screw | 2 |
| 23 | DPEC003888 | Front Foot Pad | 2 | 105 | DPEC003938 | Bushing | 2 |
| 24 | DPEC005597 | Torx Screw | 8 | 106 | DPEC005608 | Fixed Screw | 2 |
| 25 | DPEC005598 | Nylock Nut | 8 | 107 | DPEC003939 | Pointer | 1 |
| 26 | DPEC005599 | Hex Socket Screw | 10 | 108 | DPEC005609 | Torx Screw | 1 |
| 27 | DPEC004076 | Flat Washer | 10 | 109 | DPEC003940 | Bevel Scale Knob | 1 |
| 28 | DPEC003893 | Right Rail Bracket | 1 | 110 | DPEC003941 | Rotation Shaft | 1 |
| 29 | DPEC003894 | Left Rail Bracket | 1 | 111 | DPEC003942 | Bushing | 2 |
| 30 | DPEC005600 | Torx Screw | 4 | 112 | DPEC003943 | Arm Pivot Shaft | 1 |
| 31 | DPEC003896 | Rod Rail | 1 | 113 | DPEC003944 | Spring Sleeve | 2 |
| 32 | DPEC003897 | Left Rail Insert | 2 | 114 | DPEC003945 | Pivot Spring | 1 |
| 33 | DPEC005458 | Set Screw | 2 | 115 | DPEC005610 | Flat Washer | 2 |
| 34 | DPEC003899 | Hand Off Label | 2 | 116 | DPEC005988 | Gear Box | 1 |
| 35 | DPEC005601 | Set Screw | 1 | 117 | DPEC003439 | Needle Bearing | 1 |
| 36 | DPEC005984 | Worktable | 1 | 119 | DPEC005989 | Armature Bearing Assembly | 1 |
| 54 | DPEC003919 | Bushing | 1 | 120 | DPEC003950 | Adjustable hose Assembly | 1 |
| 56 | DPEC005409 | Table Logo Label | 1 | 121 | DPEC003951 | Splash Guard Assembly | 1 |
| 57 | DPEC003752 | Knob Lock - Label | 1 | 131 | DPEC003961 | Carbon Brush Cap | 2 |
| 58 | DPEC005401 | Depth Sotp Adjust - Label | 1 | 132 | DPEC003962 | Carbon Brush | 2 |
| 59 | DPEC003924 | Miter Gage Fence | 1 | 135 | DPEC005635 | Torx screw | 4 |
| 60 | DPEC003925 | Miter Gage Base | 1 | 136 | DPEC005990 | Torx Plastic Self-Tapping Screw | 3 |
| 61 | DPEC003871 | Position Height Knob | 1 | 139 | DPEC005655 | TORX SELF-TAPPING SCREW | 4 |
| 62 | DPEC003873 | Miter Gage Wedge Plate | 1 | 140 | DPEC003968 | Switch Box | 1 |
| 63 | DPEC003874 | Miter Gage Lock Knob | 1 | 141 | DPEC003969 | Torx Plastic Self Tapping Screw | 4 |
| 64 | DPEC003881 | Miter Gage Pivot Pin | 1 | 142 | DPEC003970 | Switch | 1 |
| 65 | DPEC003889 | Miter Gage Fence Screw | 1 | 145 | DPEC005991 | Spindle Lock Burron | 1 |
| 69 | DPEC003890 | Steel Ball | 1 | 146 | DPEC003974 | Spindle Lock | 1 |
| 70 | DPEC003891 | Steel Ball Spring | 1 | 147 | DPEC003975 | Compression Spring for Spindle Lock | 1 |
| 71 | DPEC005480 | Allen Wrench | 1 | 148 | DPEC003976 | Felt Washer | 1 |
| 72 | DPEC005985 | Extension Wing | 1 | 149 | DPEC003977 | Handle | 1 |
| 73 | DPEC003895 | Locating Pin | 2 | 150 | DPEC005613 | Torx screw | 4 |
| 74 | DPEC005602 | Nylock Nut | 2 | 151 | DPEC003978 | Rear Motor Housing | 1 |
| 75 | DPEC003898 | Extension Wing Knob Assembly | 1 | 152 | DPEC003979 | Torx Plastic Self-Tapping Screw M4X30L | 4 |
| 76 | DPEC005410 | Delta Logo Label | 1 | 153 | DPEC003980 | Flexible Water Hose | 2 |
| 77 | DPEC005986 | Arm Support | 1 | 154 | DPEC003981 | Connector | 1 |
| 78 | DPEC003904 | Dowel Pin | 2 | 156 | DPEC005614 | Hex Socket Screw | 2 |
| 79 | DPEC005603 | Hex Socket Screw | 4 | 157 | DPEC003983 | Splash Guard | 1 |
| 80 | DPEC003911 | Bevel Scale | 1 | 158 | DPEC003984 | Rear Splash Guard | 1 |
| 81 | DPEC005604 | Torx Screw | 4 | 159 | DPEC003985 | Special Screw | 4 |

** = Item is standard hardware and can be purchased in local hardware or home improvement stores.

REPLACEMENT PARTS

| ITEM # | DELTA PART # | DESCRIPTION | QTY | ITEM # | DELTA PART # | DESCRIPTION | QTY |
|--------|--------------|--------------------------------------|-----|--------|--------------|------------------------------|-----|
| 160 | DPEC005615 | Flat Washer | 5 | 225 | DPEC003930 | Torx Self Tapping Screw | 2 |
| 161 | DPEC005616 | Torx screw | 1 | 226 | DPEC005560 | Tie Mount | 3 |
| 162 | DPEC005992 | Inner Blade Guard | 1 | 227 | DPEC005623 | Hose Fixing Plate | 1 |
| 163 | DPEC005993 | Outer Blade Guard | 1 | 228 | DPEC005593 | Torx Head Self-Tapping Screw | 2 |
| 164 | DPEC003988 | Wire Fixing Clamp | 1 | | | | |
| 165 | DPEC003989 | Shoulder Screw | 1 | | | | |
| 166 | DPEC005617 | Torx Self Tapping Screw | 4 | | | | |
| 167 | DPEC003990 | Depth of Cut Knob | 1 | | | | |
| 168 | DPEC003991 | Plastic Wing Lock Nut | 1 | | | | |
| 169 | DPEC003992 | Blade Inner Flange | 1 | | | | |
| 170 | DPEC003993 | Blade Outer Flange | 1 | | | | |
| 171 | DPEC005994 | Blade Nut | 1 | | | | |
| 172 | DPEC003995 | Pump Motor Assembly | 1 | | | | |
| 173 | DPEC003996 | Miter Gage Lock Knob | 1 | | | | |
| 174 | DPEC005406 | Specifications Label | 1 | | | | |
| 178 | DPEC003998 | E-ring | 1 | | | | |
| 179 | DPEC003999 | Water Hose | 1 | | | | |
| 180 | DPEC004000 | Water Valve | 1 | | | | |
| 181 | DPEC005465 | Flat Head Torx Screw | 2 | | | | |
| 182 | DPEC005618 | Nylock Nut | 2 | | | | |
| 183 | DPEC004001 | Blade Guard Lock Knob | 1 | | | | |
| 184 | DPEC004082 | Handle Assembly | 1 | | | | |
| 185 | DPEC003769 | Drain Plug Assembly | 1 | | | | |
| 186 | DPEC004014 | Fence Assembly | 1 | | | | |
| 187 | DPEC004085 | Motor Housing Assembly | 1 | | | | |
| 188 | DPEC005995 | Hose Assembly | 1 | | | | |
| 189 | DPEC005996 | Drive Shaft Assembly | 1 | | | | |
| 190 | DPEC004088 | Roller Wheel Assembly | 3 | | | | |
| 191 | DPEC004089 | Guide Wheel Assembly | 3 | | | | |
| 192 | DPEC004090 | Fixed Wheel Assembly | 4 | | | | |
| 193 | DPEC005580 | Extension Wing Assembly | 1 | | | | |
| 194 | DPEC005997 | Worktable Assembly | 1 | | | | |
| 195 | DPEC005407 | Warning Label | 1 | | | | |
| 197 | DPEC005412 | Cutting Capacity Label | 1 | | | | |
| 198 | DPEC005413 | Bevel Description Label | 1 | | | | |
| 199 | DPEC005414 | Snake Pipe Label | 1 | | | | |
| 200 | DPEC005399 | Bevel Label | 1 | | | | |
| 201 | DPEC005400 | Plunge Label | 1 | | | | |
| 202 | DPEC005408 | Lift Warning Label | 1 | | | | |
| 203 | DPEC005404 | Miter Gauge Label | 1 | | | | |
| 204 | DPEC003751 | Table Lock Label | 1 | | | | |
| 205 | DPEC005290 | "L" Shaped Rubber Gasket | 1 | | | | |
| 206 | DPEC004339 | "Y" Adapter | 1 | | | | |
| 207 | DPEC004338 | Nozzle | 2 | | | | |
| 208 | DPEC004781 | Pressing Plate | 1 | | | | |
| 209 | DPEC005619 | Lock Pin Assembly | 1 | | | | |
| 210 | DPEC004762 | Water tray knob | 3 | | | | |
| 211 | DPEC004763 | Fixed Screw | 3 | | | | |
| 212 | DPEC004790 | Hex Nut | 2 | | | | |
| 213 | DPEC004754 | Torx Screw | 2 | | | | |
| 214 | DPEC004792 | Pressing plate (for rear water tray) | 2 | | | | |
| 215 | DPEC005291 | Side water tray | 1 | | | | |
| 217 | DPEC005620 | Blade | 1 | | | | |
| 218 | DPEC005621 | Motor Arm Assembly | 1 | | | | |
| 219 | DPEC005622 | Motor Assembly with Switch and Rotor | 1 | | | | |
| 220 | DPEC005292 | Rubber gasket | 1 | | | | |
| 221 | DPEC005293 | Rubber gasket | 1 | | | | |
| 222 | DPEC005294 | Rubber gasket | 1 | | | | |
| 223 | DPEC004782 | Rubber gasket | 1 | | | | |
| 224 | DPEC005558 | Cover | 1 | | | | |

** = Item is standard hardware and can be purchased in local hardware or home improvement stores.