

⚠ WARNING



Wear appropriate protective equipment including safety glasses and leather gloves. Drains may contain hazardous chemicals or bacteria.

If you have any question concerning this product:
 – Contact your local Home Depot store.
 – Contact 1-888-HD-HUSKY.

Specifications

The Husky 25ft Power Drum Auger clears lines up to 2in in diameter.
 It is not recommended for toilets. The cable is positively retained in the drum to prevent cable pullout.

Before Use

Inspect Auger. Do not use if damaged. Inspect the drain. Determine if chemicals are present. Some chemicals have specific health and handling considerations that should be provided by the manufacturer. Confirm the Auger is appropriate for the job.

Drain Access

- Through crosshairs (Figure 1).
- Unscrew cleanout plug or remove trap (Figure 2).
- Pop-up drain: Remove lift rod and drain plug (Figure 3).
- Bathtub overflow: Remove overflow plate and internal mechanism (Figure 4).

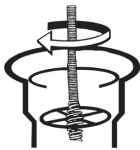


Figure 1

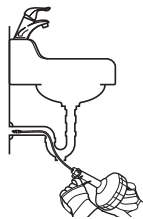


Figure 2



Figure 3

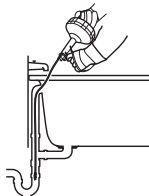


Figure 4

Operating Instructions

1. Insert cable into drain.
Position unit as close to drain as possible.
2. Slowly manually advance cable by pulling out of drum until you encounter the blockage.
Push "Quick Lock Button" to engage the lock (Figure 5).
3. Turn drum clockwise to work cable through blockage (Figure 6). DO NOT force cable. Work cable back and forth 2-3 times.
4. Push "Quick Lock Button" to disengage the lock (Figure 7).
5. Repeat step 2-4 until drain flow is established.
6. Manually advance auger back into drum and pull cable out from the drain (Figure 8).
7. If possible run water to clean debris and clean cable (Figure 9).
8. Rinse cable and drum. Air dry before storage to prevent rust.
9. Attach to power drill for more torque if necessary (Figure 10). Use low RPM speed to slowly dislodge debris. Power drill sold separately.

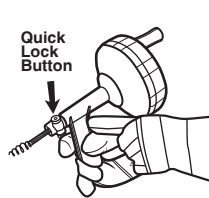


Figure 5

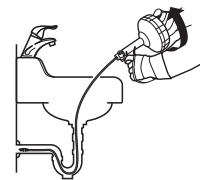


Figure 6

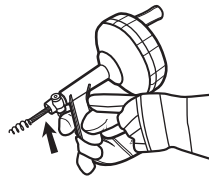


Figure 7

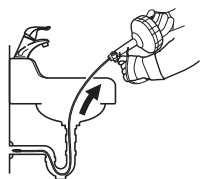


Figure 8

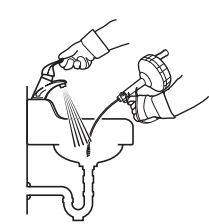


Figure 9

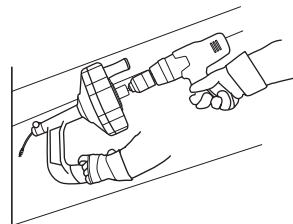


Figure 10