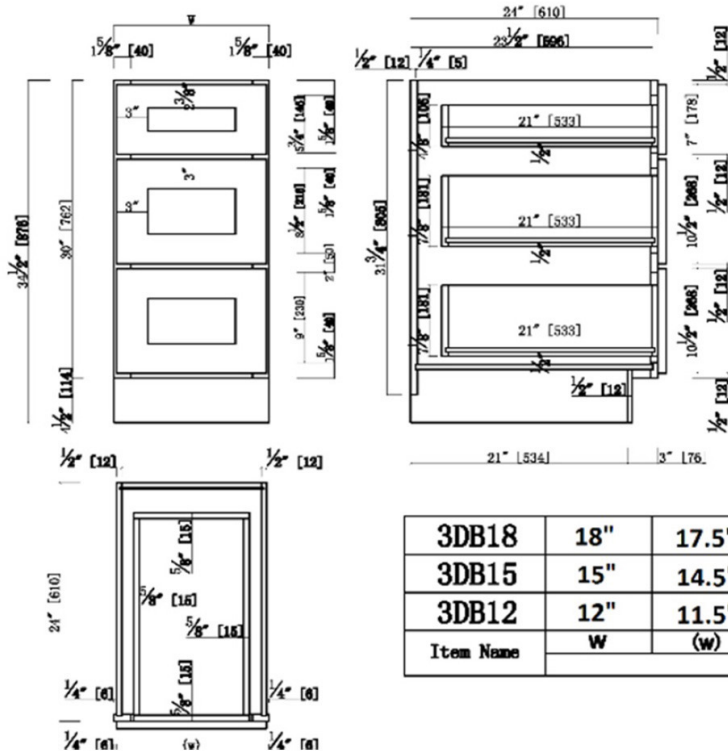


## Brookings Unassembled Shaker Drawer Base Kitchen Cabinet 18x34.5x24 White



3DB18	18"	17.5"
3DB15	15"	14.5"
3DB12	12"	11.5"
Item Name	W	(w)

### SPECIFICATIONS

**MATERIAL CONSTRUCTION:** Wood  
**WOOD SPECIES:** Maple  
**ASSEMBLED DIMENSIONS:** 34.5" H x 18" L x 24" D  
**ASSEMBLED WEIGHT:** 50.88 lbs.  
**KITCHEN CABINET TYPE:** Drawer Base  
**MOUNTING TYPE:** Floor Mount  
**CONSTRUCTION TYPE:** Face Frame  
**HINGE STYLE:** N/A  
**DOOR STYLE:** N/A shaker door

**DRAWER DIMENSIONS 1:** 4.17" H x 21" L x 14.44" D  
**DRAWER DIMENSIONS 2:** 7.12" H x 21" L x 14.44" D  
**DRAWER DIMENSIONS 3:** 7.12" H x 21" L x 14.44" D  
**DWR BOX MATERIAL:** SOLID WOOD  
**DWR CONSTRUCTION:** Dove Tail  
**DWR GLIDE:** Dove Tail  
**FAKE DWR QTY:** 0  
**FAKE DWR LOCATION:** N/A

**WARRANTY:** 1-Year limited warranty  
**LEGAL FOR SALE IN CALIFORNIA:** Yes  
**CARB COMPLIANT:** CARB Phase 2  
**TSCA TITLE IV COMPLIANT:** Yes

**NUMBER OF SHELVES:** 0  
**SHELF STYLE:** N/A  
**ADJUSTIBLE SHELVES:** N/A  
**SHELF ADJUSTIBILITY INCREMENTS:** N/A  
**SHELF DIMENSIONS:** N/A  
**SHELF THICKNESS:** N/A  
**SHELF MATERIAL:** N/A  
**FACE FRAME MATERIAL:** Solid Maple  
**SIDES MATERIAL:** Plywood  
**BOTTOM MATERIAL:** Plywood  
**BACK PANEL MATERIAL:** Plywood  
**BACK BRACE MATERIAL:** Wood  
**TOE KICK INSET WIDTH:** 3"  
**TOOLS NEEDED FOR INSTALLATION:** Phillips Screwdriver  
Mallet Wood Glue  
Wood Screw  
**FASTENER TYPE:**



**TYPE:**  
**JOB:**  
**ORDER CODE:**  
**APPROVALS:**