

Fence Extension Kit

Extension Kit

Instructions

Part Number: SEK-3x4

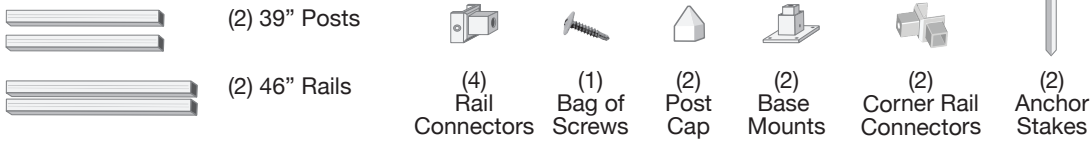


IF YOU CAN DREAM IT, YOU CAN BUILD IT.

Directions for constructing your SnapFence™ Extension Kit.

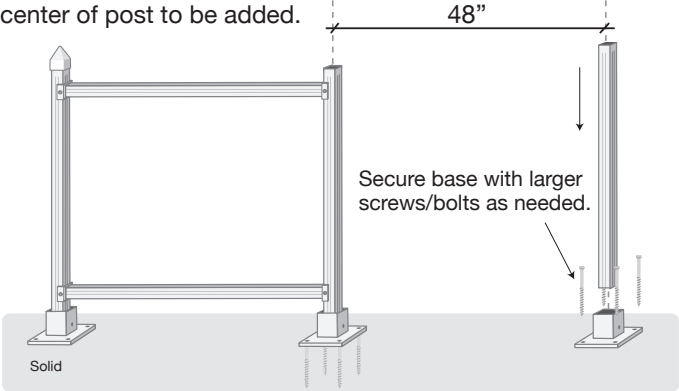
Note: Extension Kits are designed to be added to an existing Starter Kit #SK-3x8

1) Unpack box and separate parts.



Solid Mount:

2) Measure 48" from center of installed SnapFence™ post to center of post to be added.

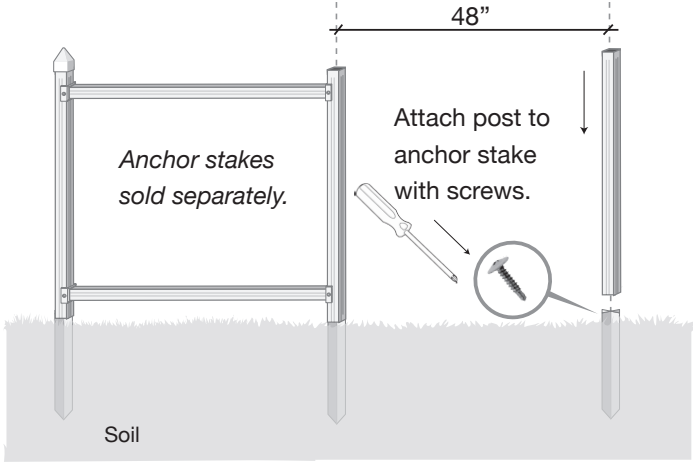


Attach post to base mount with screws. Secure base mount to existing solid surface using holes provided.

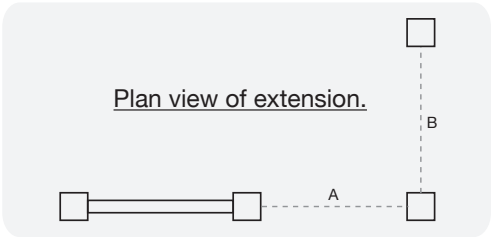
Note - use a larger type of screw or bolt as needed to secure to solid surfaces.

Soil Mount:

2) Drive anchor stake at 48" from center of installed SnapFence™ post to center of post to be added.

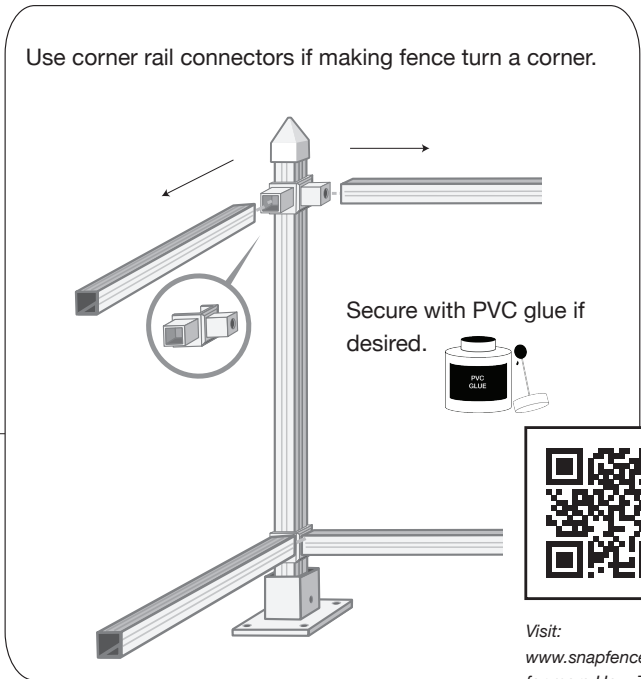
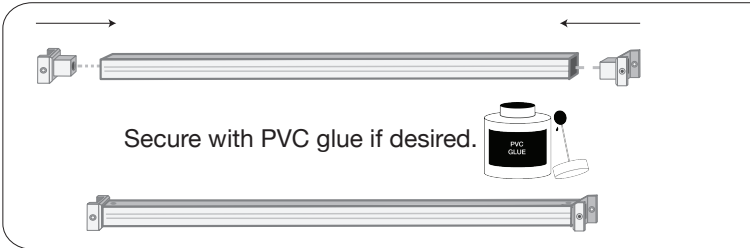


OR



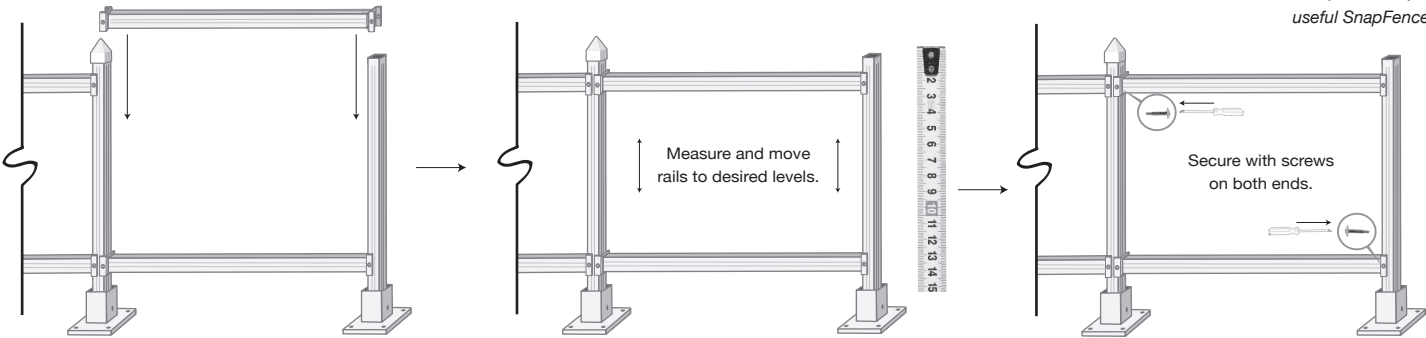
Added post can be in line with the installed section of fence (A) or at a right angle to make a corner (B). (See above plan view.)
>You will have (1) 39" Post, (1) Base Mount & (1) Post Cap leftover if using with a pre-existing SnapFence system.

3) Attach rail connectors to each end of rails (46").

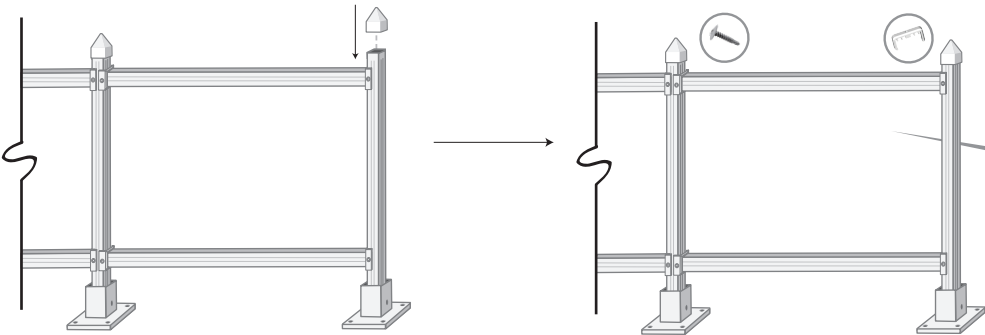


Visit:
www.snapfence.com
for more How-To help.
Scan the QR code to
take you directly to
useful SnapFence tips.

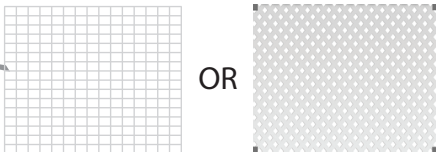
4) Snap rail sections onto posts (39"). Measure and move rails to desired levels. Secure with screws on both ends.



5) Push on post caps. Attach with PVC glue if desired.



*Finish with pre-cut wire SnapPanels (sold separately). Attach wire with Panel Clips (sold separately) Use screws to attach clips.



*Finish with pre-cut Lattice SnapPanels (sold separately). Attach lattice with provided screws. Screw directly through lattice panel.

Continue to add to your project with the SnapFence™ Extension Kit, (sold separately.)