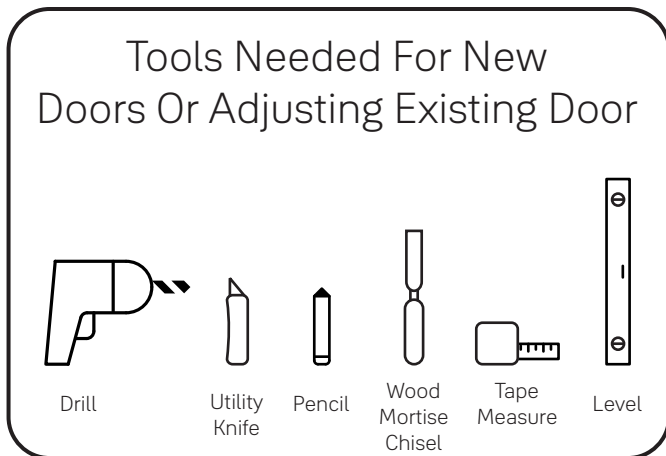




Nest x Yale Lock Installation Guide

This manual will walk you through all the required steps to add your new Nest x Yale Lock to your door.

- Remove existing deadbolt
- Double check door measurements
- Install your Nest x Yale Lock
- Program your Nest x Yale Lock
- Add your Nest x Yale Lock to your Nest App



Before you begin

DOWNLOAD
THE BILT APP

BILT.

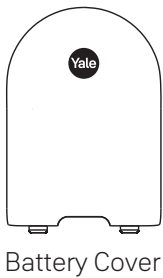
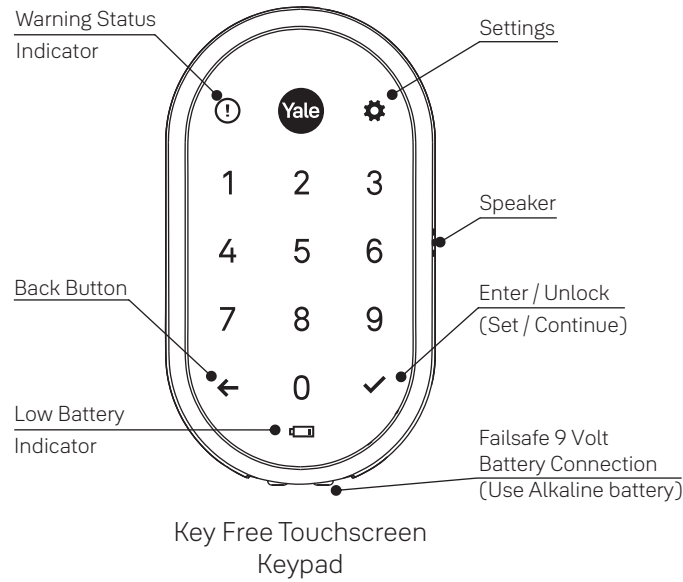
Download on the App Store GET IT ON Google Play

Using the app on your smart phone, scan this QR for step-by-step installation instructions & to register your lock

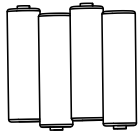
Failure to follow these instructions could result in damage to the product and void the factory warranty.



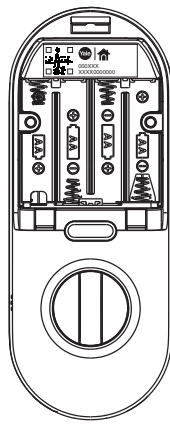
What's In The Box



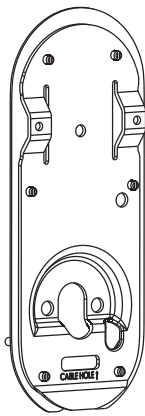
Battery Cover



4 AA Batteries



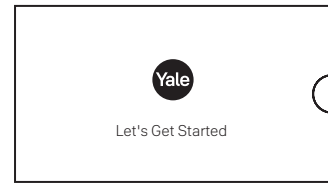
Inside Lock



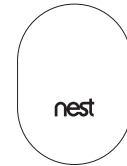
Mounting Plate



Battery Cover Key

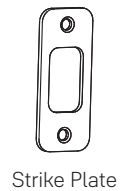


Installation Guide and Door Template

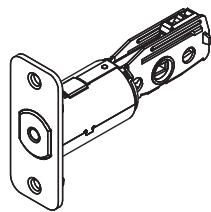


Nest Connect
Included with RB-YRD540 models

Mounting Hardware



Strike Plate



Adjustable Deadbolt
(AYRDB-DRIVE Adjustable Drive-In Deadbolt available for purchase)



x2
Inside Lock Screws



x4
Strike Plate and Deadbolt Screws



x2
Optional Security Strike Plate Screws



x2
Screw Set B Green for 1-3/8" Door Thickness

OR



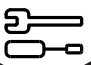
x2
Screw Set C Black, Standard for 1-3/4" Door Thickness

OR



x2
Screw Set D Silver for 2 to 2-1/4" Door Thickness

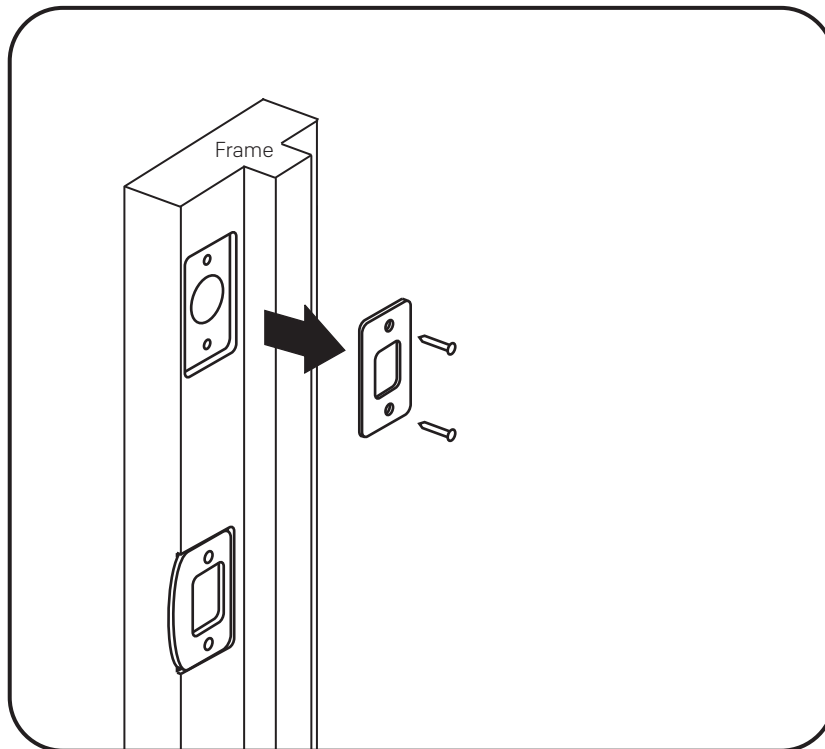
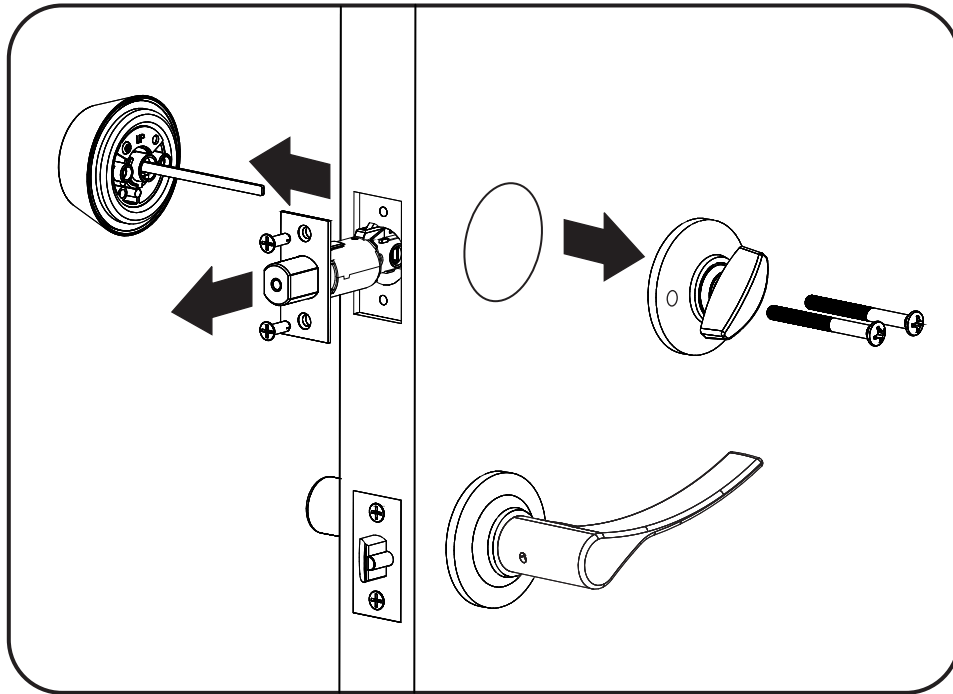
1



Remove Existing Deadbolt



Do not discard old lock hardware until Nest x Yale Lock has been successfully installed.

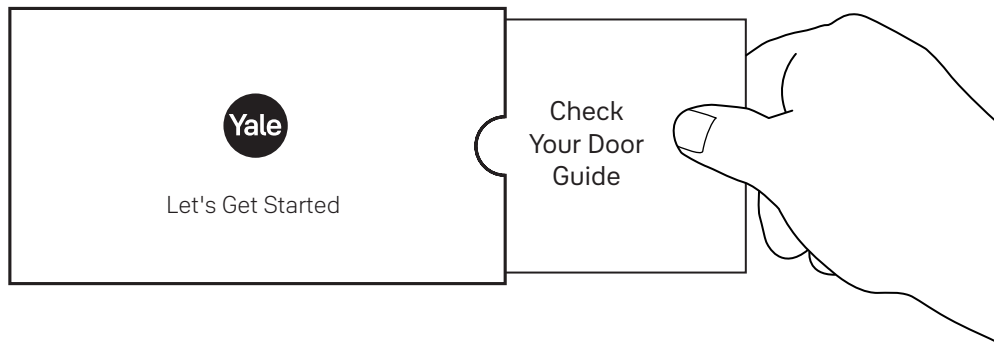


2

Check Door Measurements And Make Adjustments If Needed

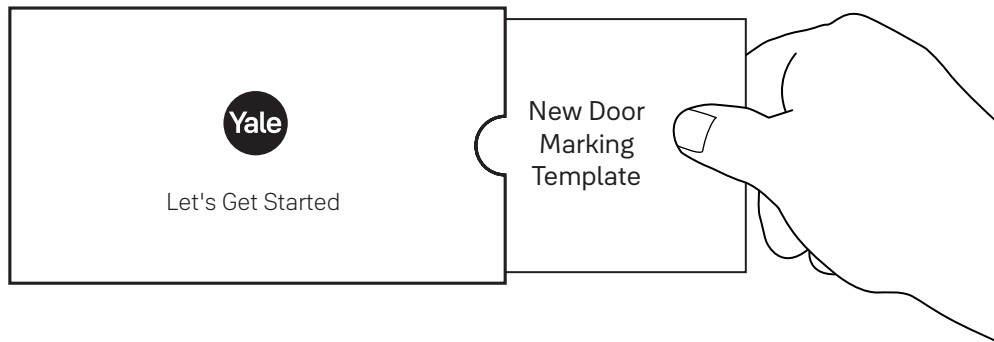
Door Checker

Use door checker from installation guide envelope to verify your door measurements and make any needed adjustments.



New Door Marking Template

With door checker, use template from installation guide envelope to prep a new door that has not been predrilled for hardware.



3

Download the Nest App



You must have one of the following products to use your lock with the Nest App:

- Nest Connect or
- Google Nest Alarm System

Your new Nest x Yale Lock is easy to control through the Nest App. The app will allow you to program your lock and share access. If you aren't using the Nest App, we highly recommend downloading it now.

4

Install Deadbolt and Strike Plate



x2

For Deadbolt
Actual Size

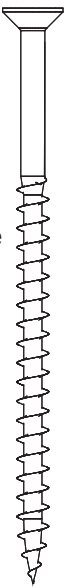


x2

For Strike Plate
Actual Size



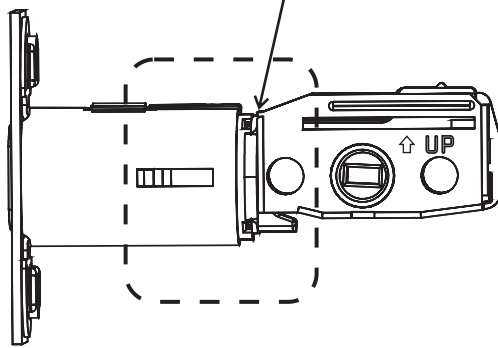
Choose standard strike plate screws or security screws.



x2

For Strike Plate, optional
Actual Size

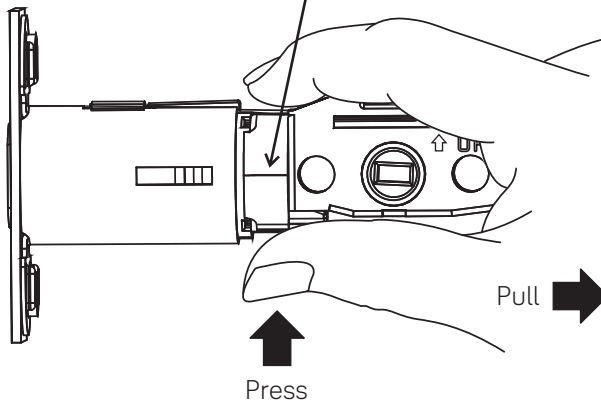
*2-3/8" Backset, default



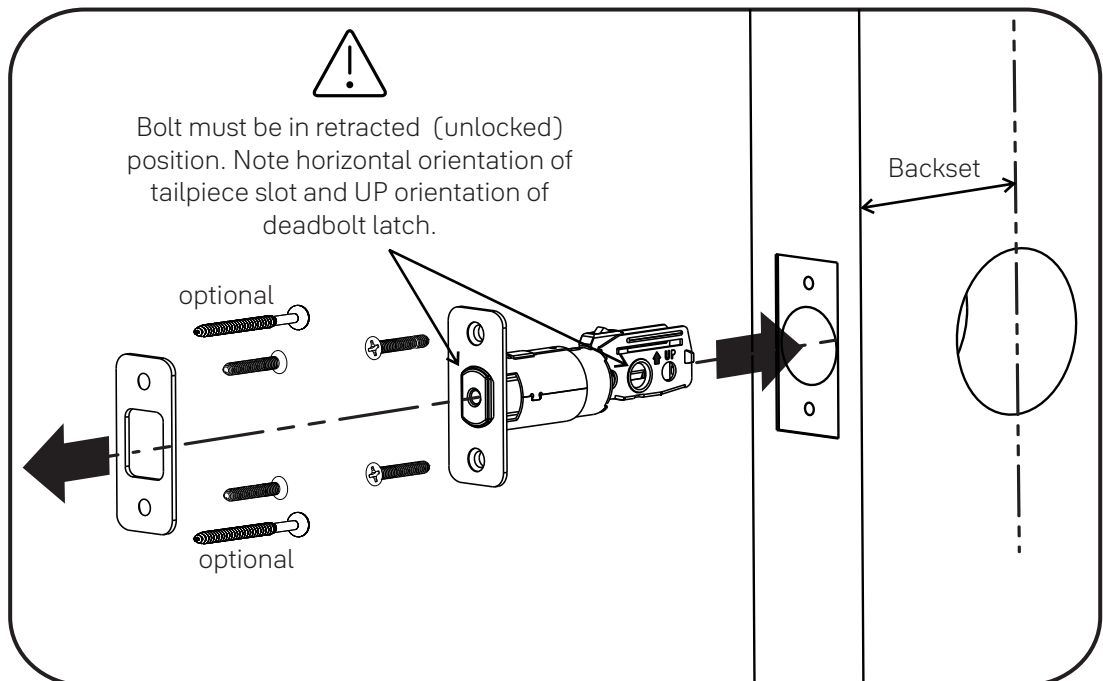
*Deadbolt position is based on backset. Choose position appropriate for your door. Reference Door Checker measurements E and F.

AYRDB-DRIVE
Adjustable Drive-In Deadbolt
available for purchase on
ShopYaleHome.com

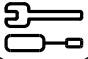
○ *2-3/4" Backset, optional



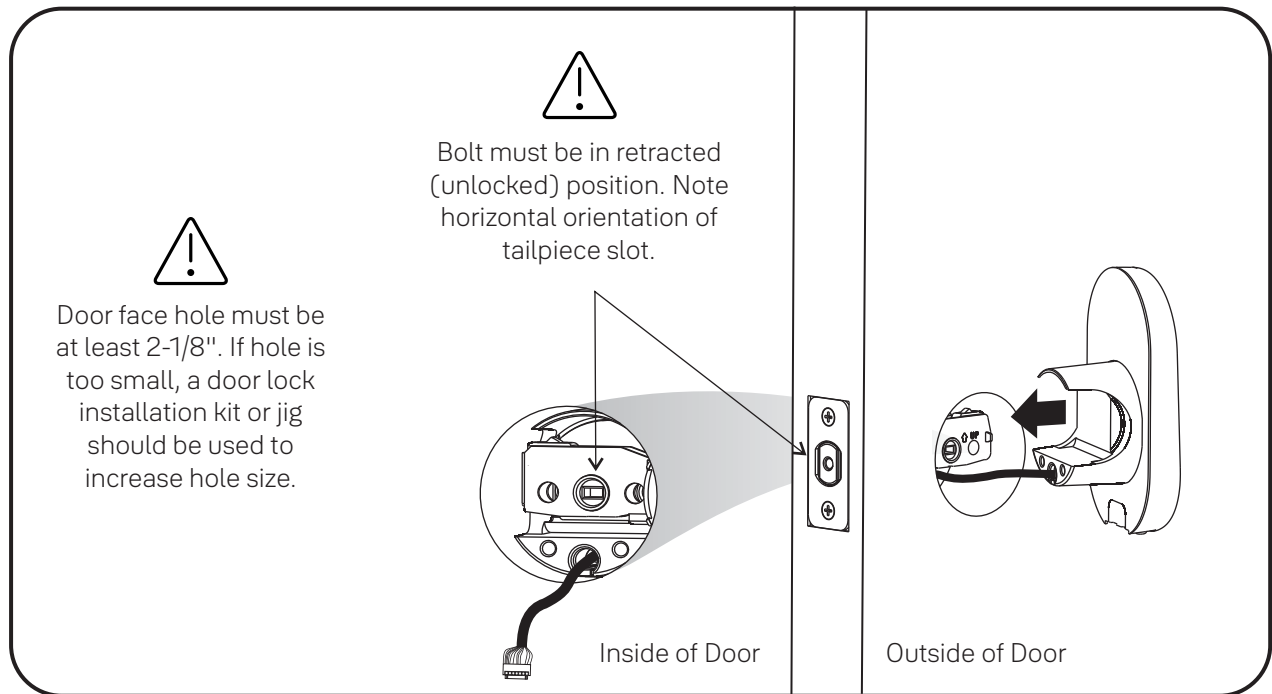
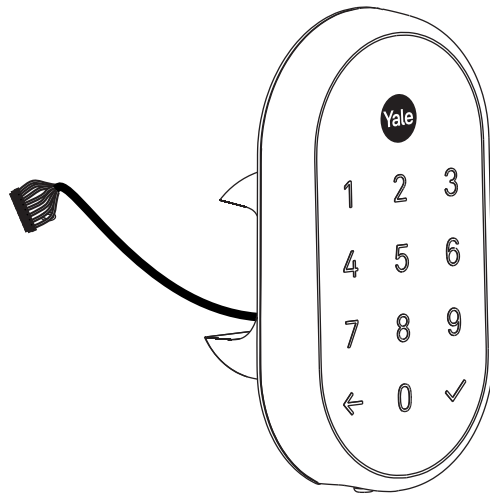
Bolt must be in retracted (unlocked) position.




5



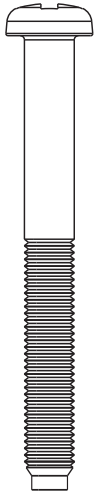
Install Touchscreen Keypad



6

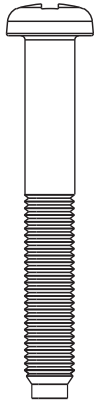


Install Inside Mounting Plate



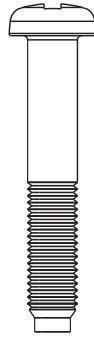
x2

Actual Size
Screw Set D
Silver
for
2 to 2-1/4"
Door Thickness



x2

Actual Size
Screw Set C
Black
Standard for
1-3/4"
Door Thickness

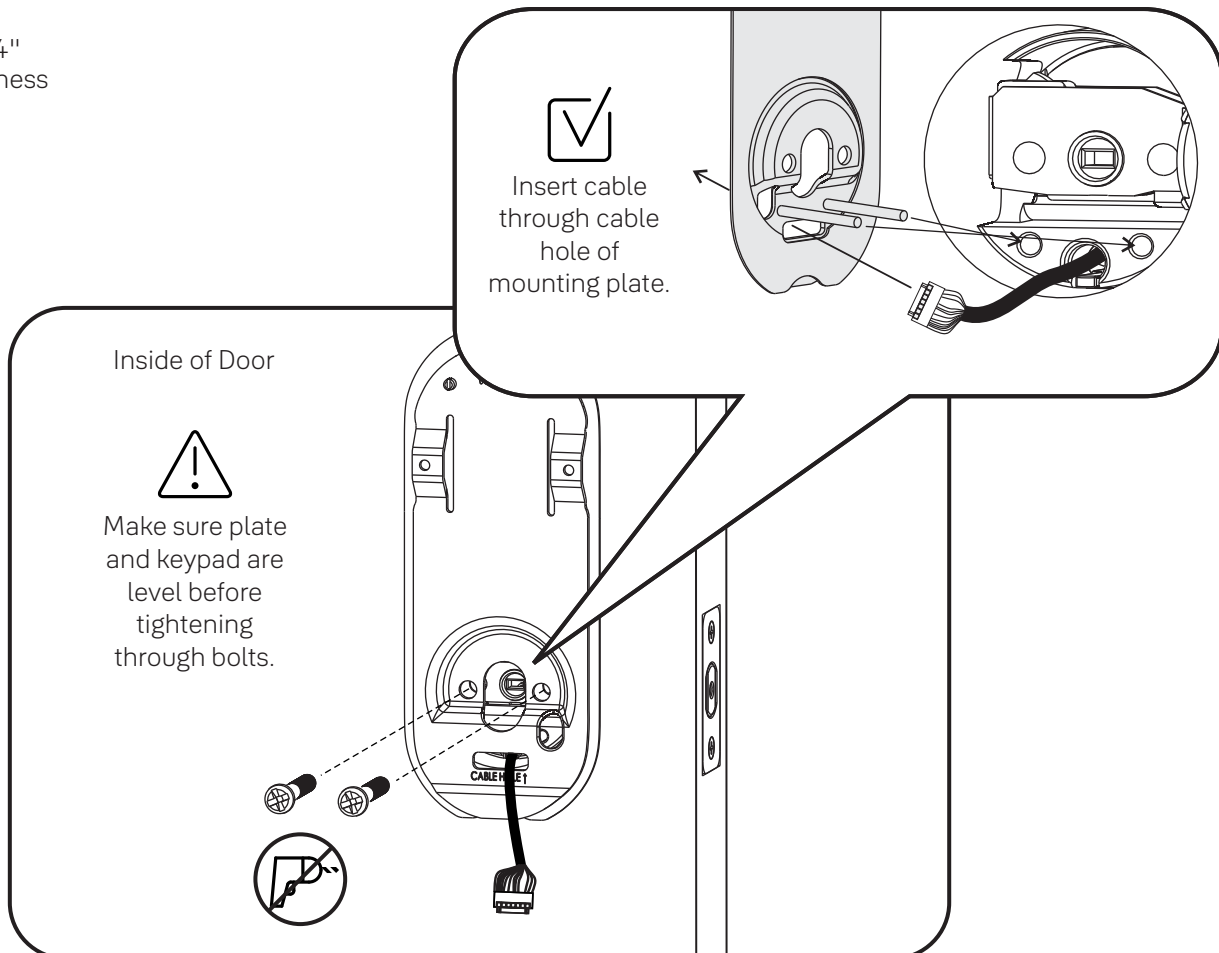


x2


Actual Size
Screw Set B
Green
for
1-3/8"
Door Thickness



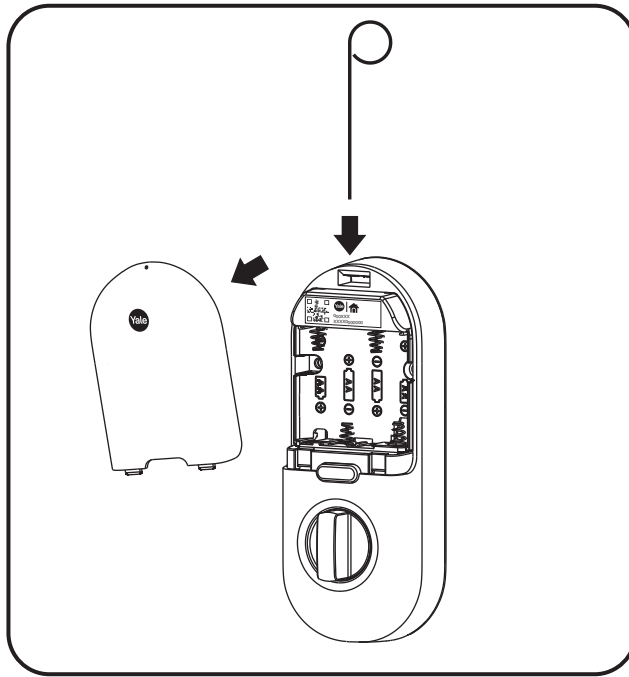
Choose through bolt appropriate for your door thickness. Verify appropriate through bolt with the door checker.




7



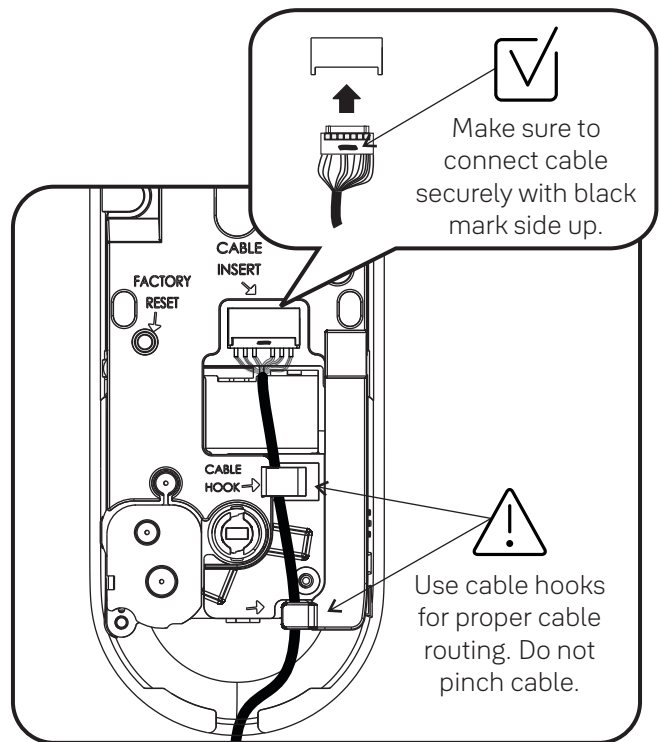
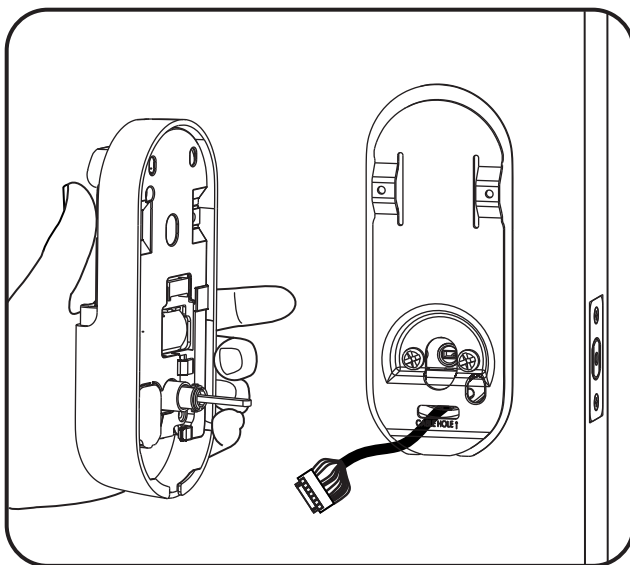
Remove Battery Cover



8



Attach Cable



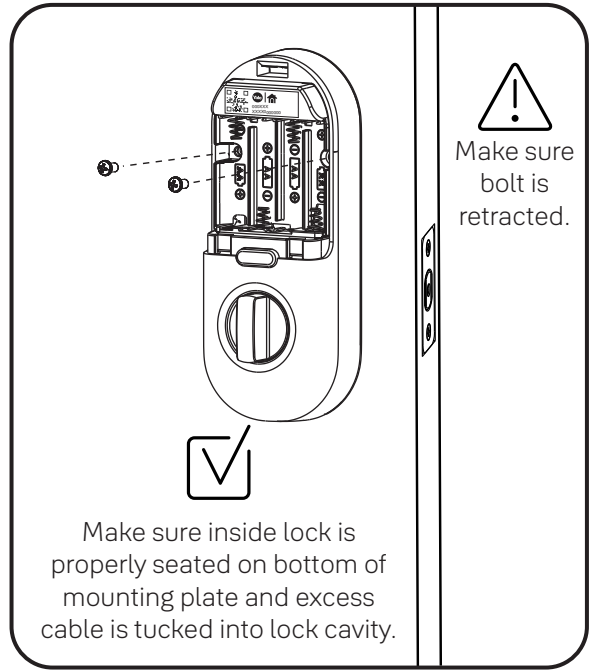
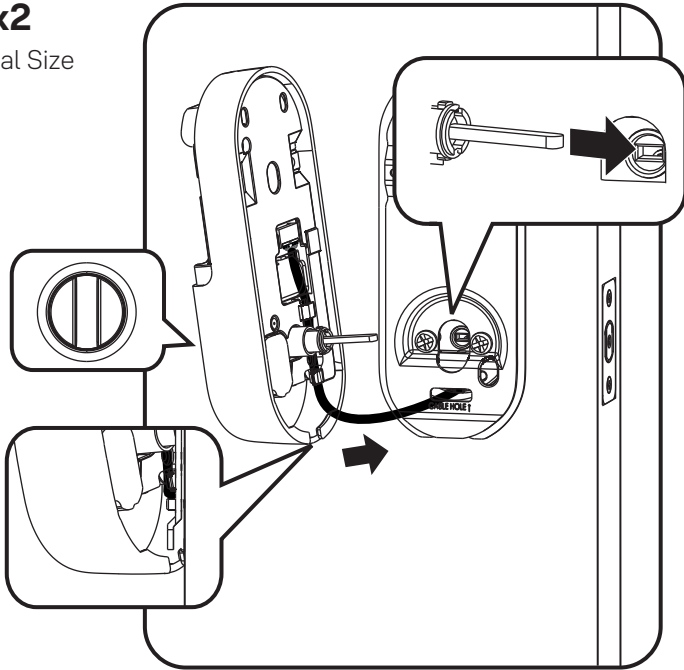
9

Install Inside Lock



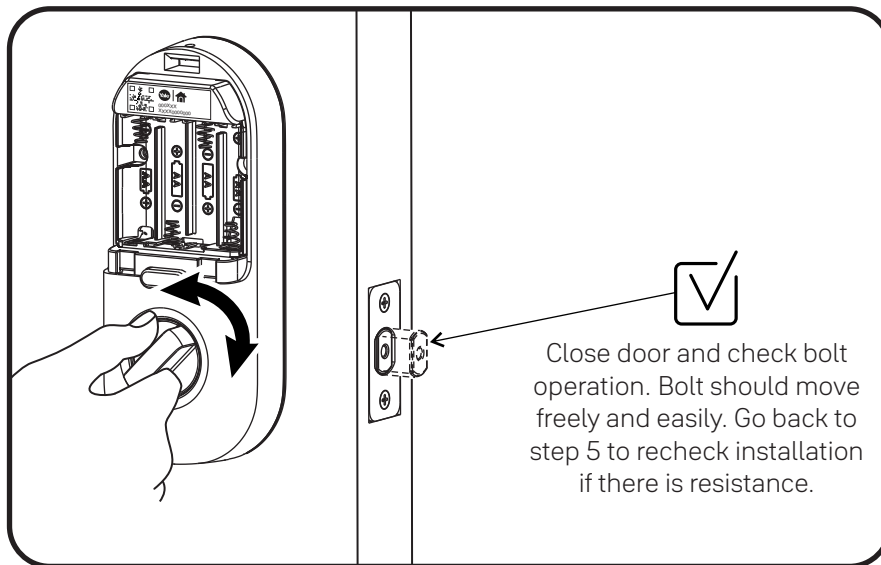
x2

Actual Size



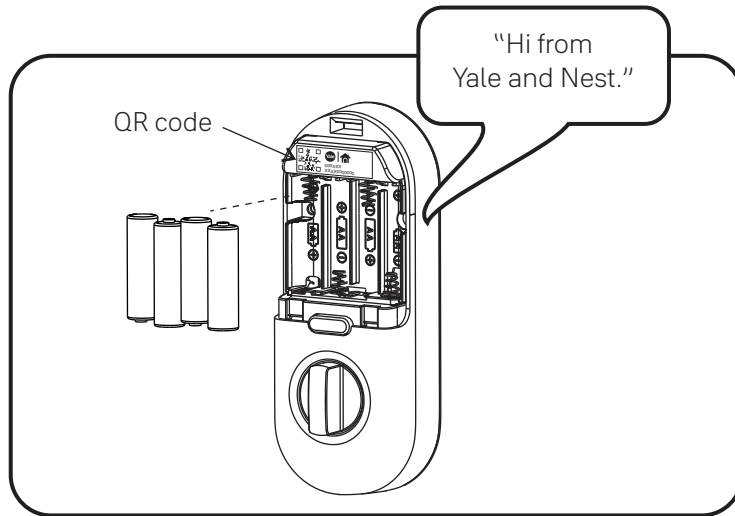
Test Operation

Test Operation



10

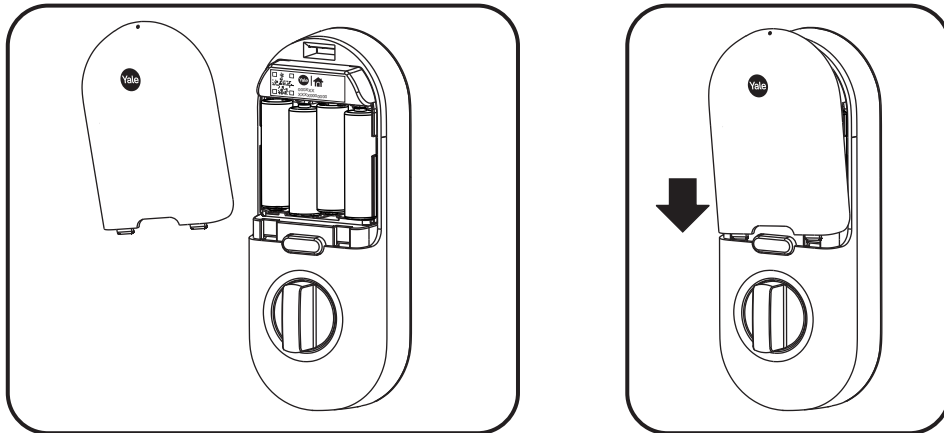
Install Batteries/Hand Lock



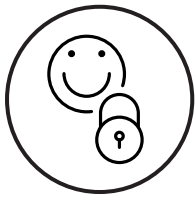
If you are pairing your Nest x Yale Lock with the Nest App, you should scan the QR code on the inside of the lock at this time.

11

Install Cover



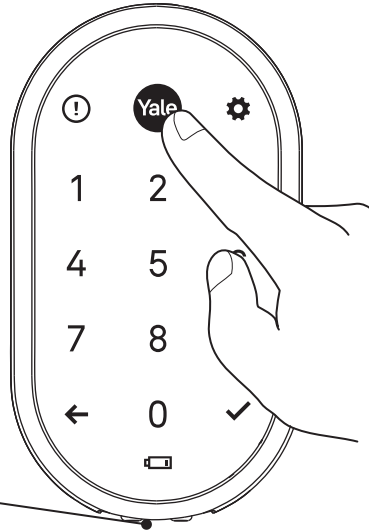
Congratulations, you've installed the Nest x Yale Lock!



Using Your Lock

NOTE TO INSTALLER AND CONSUMER
 While Yale® has included several features to prevent lockout (9-Volt battery jumper, low battery warnings), it is still possible for a lockout situation to occur. Because this product does not have a mechanical override (a key), Yale® recommends to use this product in an environment where there are additional entry points into the dwelling.

Failsafe 9 Volt
 Battery Connection
 (Use Alkaline battery)



There are two ways to manage and control your lock.

On the Lock:

- Touch Yale logo to wake lock.
- After waking the lock, you will be guided by the lock voice to create a Master Code using the lock keypad. Your lock automatically calibrates for use after creation of the code.
- Creating User Passcodes (25 max) and customizing settings can be done on the lock keypad after the Master Code is created.
- Lock and unlock your door by entering a Passcode on the lock keypad.

With your Nest App:

- Touch Yale logo to wake lock.
- After waking the lock, you will be guided by the lock voice to create a Master Code on the lock keypad. Your lock automatically calibrates for use after creation of the code.
- From the app, pair your lock to the Nest App.
- Creating User Passcodes (25 max) and customizing settings can be done through the Nest App after setup is complete.



Once paired, the Master Code is no longer valid. The lock keypad cannot be used to program codes or change settings.

- Lock and unlock the door by entering a Passcode on the lock keypad or remotely with the Nest App.



For written programming/troubleshooting instructions, FAQs and instructions in other languages, visit Support.ShopYaleHome.com

Yale Home

24/7 Product Support : 1-855-213-5841 • US.YaleHome.com

Nest x Yale Lock is a smart lock by ASSA ABLOY that pairs to a Google Account and uses Google services to connect to the internet. For set up and full feature access including remote control, mobile alerts, and software updates, Nest x Yale Lock requires the Nest Connect (included in box) and a working internet connection over Wi-Fi, the free Nest app, and an active Google Account. Minimum requirements are available at g.co/nest/devicereq.

Availability and performance of certain features are service-, device-, and network-dependent and may not be available in all areas. All features, functionality, and product specifications are subject to change without notice or obligation. Voice control with Google Assistant requires a compatible smart device. Google, Nest, and related marks and logos are trademarks of Google LLC. Yale® is a registered trademark of Yale Home. ©Copyright 2021. All rights reserved. Reproduction in whole or in part without the express written permission of Yale Home is prohibited.