

1.5" from SW EDGE to ZIPPER FLANGE
(1.689") from SW EDGE to ZIPPER CENTER
(431 mm)

1" from SW EDGE
to TEAR NOTCH
(25.4 mm)



Food Grade

A Natural Product Composed of
**Ground Freshwater
Diatomaceous Earth**
(Fossil Shell Flour™)

NET WT. **4** lbs.
(1.81 kg)

INGREDIENTS:
Diatomaceous Earth 100%
(See back of label for Directions for Use)

MINED AND PACKAGED in USA



**Diatomaceous
Earth**

FOOD GRADE
A Natural Product Composed Of Ground Freshwater Diatomaceous Earth
(Fossil Shell Flour™)

NET WT. **4** lbs.
(1.81 kg)

16mm
STAND PUNCHES

16mm
STAND PUNCHES

FRONT PANEL 17"
(431.8 mm)

BOTTOM GUSSET 4"
(101.6 mm)

BACK PANEL 17"
(431.8 mm)

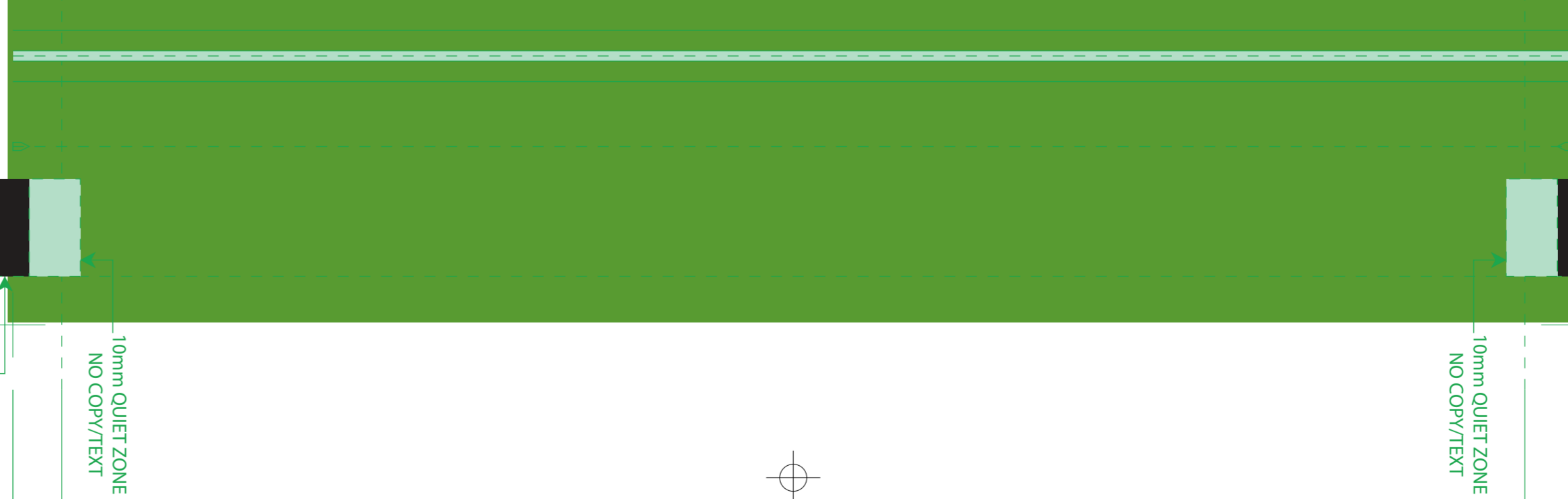
All dimensions have a (+/-) .125 inch tolerance (3.2 mm).

SPLIT WEB 38"
(965.2 mm)

RUNNING SPLIT WEB 38.75"
(984.2 mm)

1.5" from SW EDGE to ZIPPER FLANGE
(1.689") from SW EDGE to ZIPPER CENTER
(431 mm)

1" from SW EDGE
to TEAR NOTCH
(25.4 mm)



**Diatomaceous
Earth**

HARRIS
★ Since 1922 ★

Food Grade
Anti-Caking Agent



A Natural Product Composed of
Ground Freshwater Diatomaceous Earth
(Fossil Shell Flour™)

NET WT. **4** lbs.
(1.81 kg)

INGREDIENTS:
Diatomaceous Earth 100%
(See back of label for Directions for Use)

MINED AND PACKAGED in USA

FOR MORE INFORMATION ABOUT THE SAFETY AND USE OF THIS PRODUCT, VISIT US ON THE WEB AT www.pharris.com

MADE IN THE U.S.A.
P.J. Harris Manufacturing Company, LLC
P.O. Box 1922 Centerville, CA 90120
Marketing Through: 5pm to 5pm EST
Or visit www.pharris.com
REV102020

The Fossil Shell Flour™ is a registered trademark of Pinnac Quant, Inc. Salt Lake City, UT

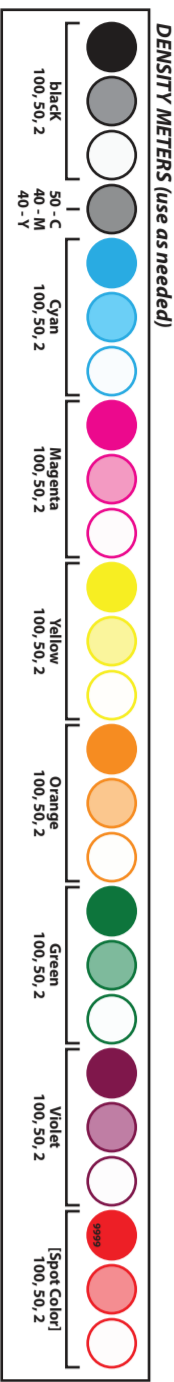
Directions for Use:
For use as an anti-caking agent to be mixed in animal feed.

Limitations of Use:
To be mixed in animal feeds in an amount not to exceed 2% by weight of total ration.

Risk of Exposure:
Dust may cause eye and respiratory irritation.

Precautions:
Use an approved respirator and goggles. Work areas should be equipped with adequate dust collection or exhaust ventilation. Keep out of the reach of children.

First Aid:
Eyes: Flush with clean water to remove dust. **Inhalation:** Remove to fresh air.



JOB 99999-99 / BMS1 / Bag Hook & Loop / Alt: Z2-2019 / UPCI(A) 100%_004 BWR/ Ann

0W20190822-0

CUTOFF 12.0078"
(305.0 mm)

15.5
0.375
1.5

15.5
0.375
1.5