



DRYWALL SHIMS

Applications:

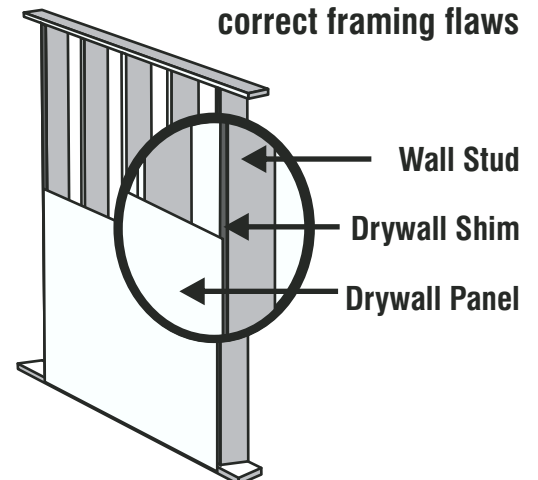
- ✓ Bowed or twisted studs
- ✓ Out-of-plumb corners
- ✓ Misaligned framing on windows & doors
- ✓ Used for floating butt-joints
- ✓ Corrects framing irregularities
- ✓ Allows a greater inset at the drywall joint
- ✓ Can be attached with screws or nails to framing members of each side of a butt-joint



Keep Dry



Drywall Shims added to correct framing flaws



SKU	Dimensions	Shims/ Bundle	Bundles/ Box
GRWSHIM	1-1/2 in. x 45 in.	100	4