



Making Dream Surfaces Attainable

Bayside Manufactured Stone Veneer Installation

Exterior Applications:

Make sure that the application of Bayside and the structure they are being applied to incorporate good building practices. Corrosion-resistant flashing shall be installed at all wall penetrations. Flashing type and locations shall be in accordance with the requirements of the applicable building code. On exterior applications, the incorrect installation or absence of flashing, cant strips, gutters and downspouts may result in diversion of water run-off onto finished surface areas. Masonry and other building products subjected to these conditions may develop staining and, when combined with severe freeze-thaw conditions, may eventually cause damage. Application under these conditions is not recommended.

Flashing:

To maintain the weather-resistance of the exterior wall on which stone products are installed, corrosion resistant Flashing/Weepscreed and a means of drainage shall be installed at all penetrations and terminations of the stone cladding. Flashing type and locations shall be in accordance with the requirements of the applicable building code.

Clearance:

Maintain 4" clearance between Bayside Veneers and grade or 2" clearance above a paved surface. Most building codes require the use of a weepscreed in framed applications. In framed applications this distance is measured from the "beak" of the weep screed. When a weep screed is not required, application over masonry as an example, a 2" x 4" leveling/ledger board may be used as a temporary level straight edge to start your installation.

Water Resistive Barrier:

A water-resistive barrier must be appropriately installed with penetration and junction flashing in accordance with local building code requirements. MSI will assume no responsibility for water infiltration.

Lath Installation:

Where lath is required, it shall be installed in accordance with ASTM C1063. Typically this will require corrosion resistant fasteners every 6" on center vertically, and 16" on center horizontally, fastened to framing.

Scratch Coat:

Using a trowel or spray application, install mortar scratch coat of minimum thickness of 1/2" up to 3/4". Use sufficient material and pressure to fully engage and encapsulate the lath. No lath material should be visible after scratch coat installation.

Mortar:

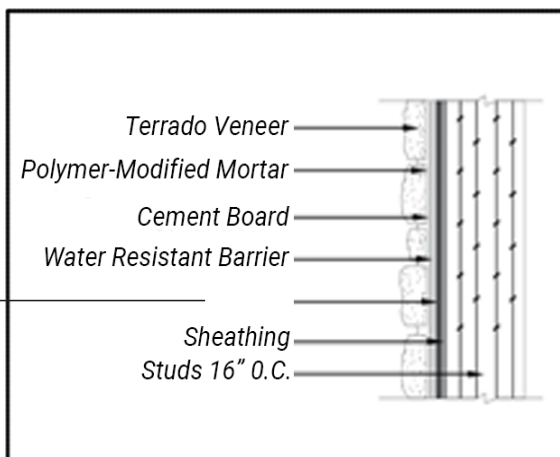
Prepackaged mortars meeting or exceeding the requirements of ANSI A118.15 such as CUSTOM Building Products' Pro-Lite. All panels must be back-buttered prior to setting to ensure complete coverage.

Cutting And Shaping:

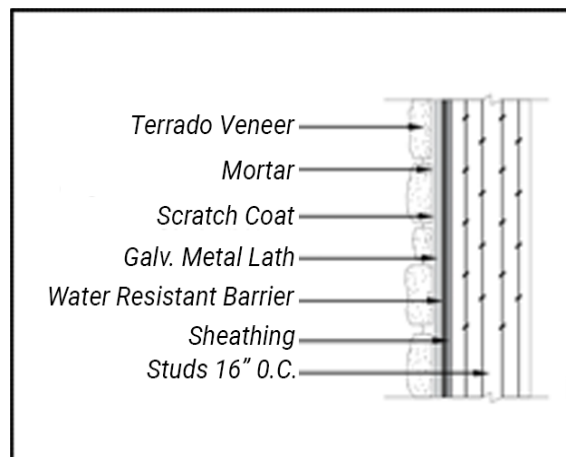
Manufactured stone veneer is easily shaped or cut as desired. This enables you to fit stones quickly into place, insuring a natural looking wall with tight mortar joints. Cutting or shaping can be done by using any of the following tools: hand-held disc grinder with diamond blade, stone nippers or wet saw with diamond blade. When possible, cut edges should be hidden and/or covered by grout. Always wear OSHA approved safety glasses and dust masks during the cutting process. Wet saws and dust collector kits can also be used to keep dust to a minimum around job sites. Check for additional OSHA requirements in your area.

Appropriate Substrates:

Water Frame With Cement Board



Water Frame With Sheathing



Application of Bayside Manufactured Veneer Units:

Chalk lines should be utilized to ensure a level installation. The first course of Bayside will determine the levelness of each additional row above. It is critical that the first course is installed level.

If your application requires corner pieces, apply these first. Notice that the corner pieces have a long and a short leg. Alternate these in opposite directions.

After the corner pieces are in place, flat pieces are applied working toward the wall center. Bayside veneer flat pieces come in 3 different lengths. Ensure you mix up the pieces so joints do not line up from row to row.

Apply mortar and stone working from the bottom up. Work the stones into the wall with a side-to-side motion to create and ensure a proper bond. Remove any squeezed out mortar to allow the adjoining unit to butt tightly.

If excess mortar drops or smears on to the face of the stone during application, it's best to remove the excess mortar and wipe the hazy area with a clean sponge as soon as possible.

Water Run-off or Cascading Water:

It is not recommended to install manufactured stone veneer in areas of cascading water or below the water line. Water run-off should always be diverted away from installed manufactured stone veneer surfaces. Chemicals in the water may cause discoloration or efflorescence on the face of the stone.

Blending of Product From Different Boxes:

Product should be pulled from a variety of boxes and blended on site during installation to ensure a consistent overall project color on the wall.

Warning:

Cement stone veneers contain crystalline silica (quartz) and traces of other potentially hazardous substances which can be released into the air as dust and inhaled while dry-cutting, drilling or shaping the product. Crystalline silica and other materials contained in this product may cause cancer, birth defects and other reproductive harm. A properly fitted NIOSH approved particulate filtering face piece should be used during dust generating processes.