

Ring 2



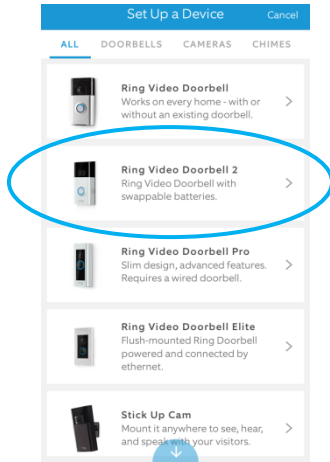
DESIGNED FOR RING 2 WITH SPECIAL ELECTRONICS TO PROTECT YOUR BELL

The only supply with **special** electronics to protect and fully power your doorbell.

1 START HERE

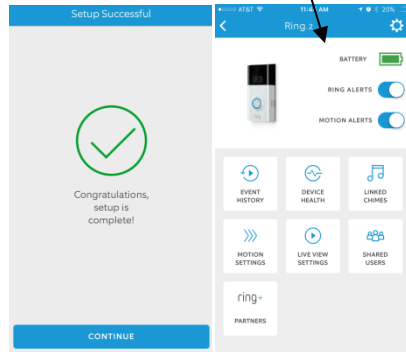
PLEASE UNBOX AND SETUP YOUR RING 2 DOORBELL WITHOUT THE POWER SUPPLY FIRST.

- A. IT IS RECOMMENDED THAT YOU FULLY CHARGE THE BATTERY BEFORE SETUP.
- B. DOWNLOAD THE RING APP ON YOUR SMART PHONE AND THEN FOLLOW SETUP INSTRUCTIONS AS ENCLOSED IN THE **RING 2** BOX.



2 ONCE SET UP, PLEASE MAKE SURE THAT ALL FUNCTIONS OF RING 2 DOORBELL ARE WORKING CORRECTLY INCLUDING RINGING, NOTIFICATION AND LIVE VIEW. YOU MAY HAVE TO GO INTO SETTINGS AND ACTUATE THE LIVE VIEW SETTING.

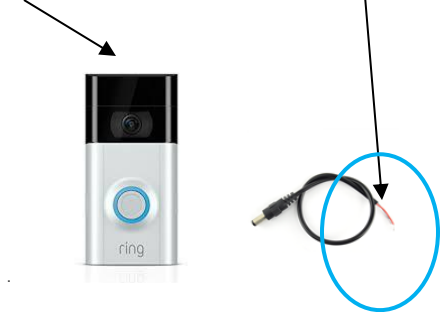
THIS TESTING IS TO ENSURE THAT RING 2 HAS NO FIRMWARE ISSUES AS PROBLEMS HAVE BEEN REPORTED WITH FIRMWARE PRIOR TO 1.9.48. YOU CAN CHECK FIRMWARE BY CLICKING DEVICE HEALTH. THE POWER SUPPLY DOES NOT INFLUENCE RING 2 FUNCTIONS IN ANY WAY.



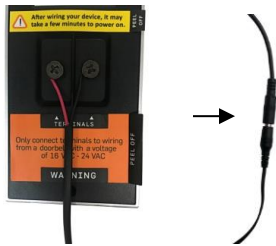
3 NOW INSTALL THE POWER SUPPLY

PLEASE DO **NOT** PLUG THE TRANSFORMER IN FIRST. PLEASE MAKE BELL CONNECTIONS FIRST.

CONNECT CONNECTOR CABLE ENDS TO THE **RING 2** TERMINAL POINTS.



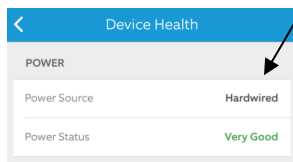
4 YOU CAN CONNECT EITHER WIRE TO EITHER TERMINAL. THEN CONNECT THE MALE CONNECTOR TO THE FEMALE CONNECTOR OF THE ADAPTER. NOW PLUG IN THE TRANSFORMER.



SOCKET → OHMKAT POWER SUPPLY → RING 2

NOTE

THE POWER SUPPLY TRICKLE CHARGES THE BATTERY, SO OVER THE NEXT FEW DAYS YOU WILL SEE THE BATTERY STATUS STEADILY IMPROVE AND IT WILL THEN BE MAINTAINED AT THAT LEVEL. THIS IS NOT INSTANTANEOUS.



5 YOU WILL SEE THE WHITE CIRCLE ON RING DOORBELL LIGHT UP. IT TAKES 30 SECONDS TO LIGHT UP. YOUR RING 2 DOORBELL IS NOW POWERED.

In a nutshell: THIS IS EASY.



OHMKAT LED HAS 3 STATES.

- OFF
- **FULL BRIGHT** (FULL POWER STATE)
- **DIM** (BELL HAS LOCKED ITSELF OR THERE IS A SHORT ON THE LINE. **DISCONNECT/RESET FOR 2 MINUTES**)

PLEASE READ THIS CAREFULLY. EVERY OHMKAT HAS EXCLUSIVE SELF TEST CAPABILITY AND SPECIAL PROTECTIVE ELECTRONICS. OHMKAT IS ALSO VERY ROBUST AND RARELY FAILS. IF YOU EXPERIENCE ANY ISSUE ASK US ABOUT THE SELF TEST CAPABILITY. IT IS EASY TO TEST AND GIVES YOU IMMEDIATE PEACE OF MIND ABOUT OHMKAT HEALTH.

RING 2 IS KNOWN TO PERIODICALLY LOCK ITSELF AND IT SEEMS THAT POWER SUPPLY IS THE PROBLEM WHEN IT IS NOT. THE FIX IS SIMPLE. TAKE THE RING 2 AND PRESS THE RESET BUTTON FOR 30 SECONDS. THEN RELEASE AND SETUP RING 2 AGAIN IN APP. ONCE SETUP JUST RECONNECT TO OHMKAT.

FOR ANY QUESTIONS WRITE TO US AT: SERVICE@OHMKAT.COM. IF WE CANNOT RESOLVE YOUR PROBLEM, WE WILL REPLACE YOUR UNIT OR GIVE YOU A REFUND.

