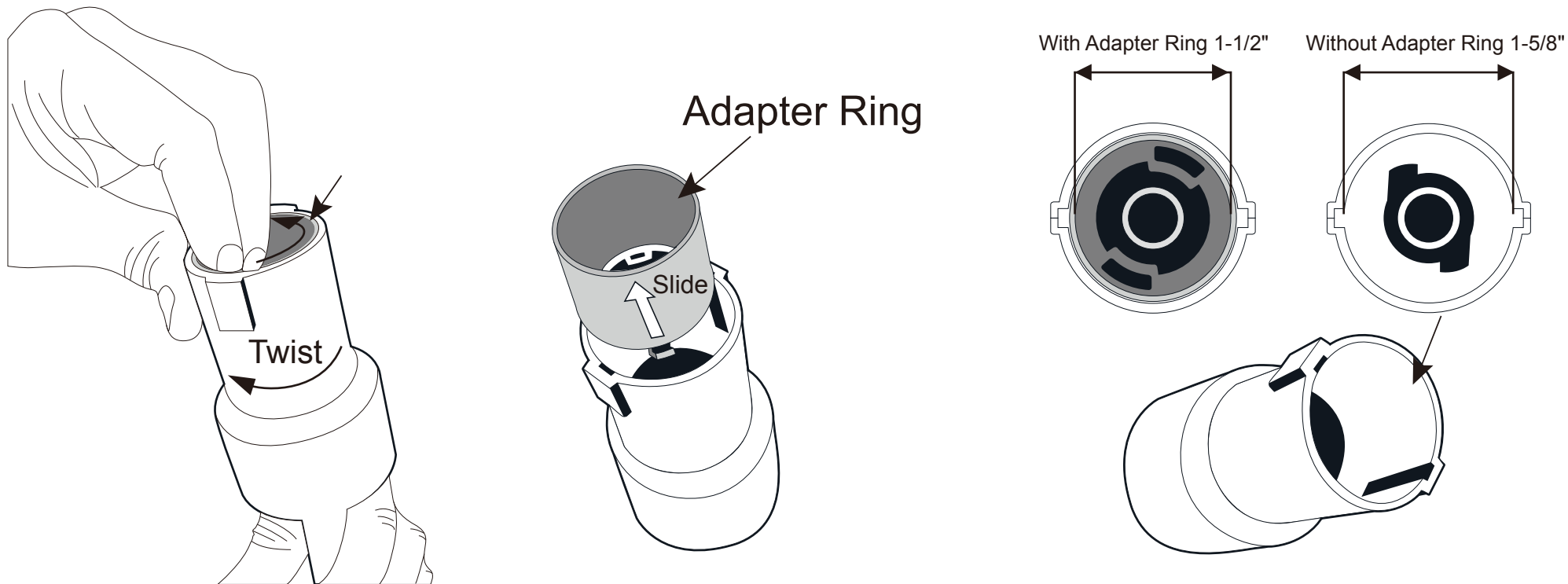


EASY ASSEMBLY AND OPERATION INSTRUCTIONS

6ft Fog Hose

Adapter allows hose to fit either standard size nozzle 1-1/2" or 1-5/8" (40.5 mm and 43.5mm)

For Larger Nozzles, just remove the pre-inserted Adapter Ring:



If the connection on the hose is slightly too small to fit the nozzle on your machine, try removing the preinserted inner adapter ring. Grip the outside of the connector firmly in one hand, while with the other, press and twist counter-clockwise from the inside.

Once loosened, the inner ring should slide out easily, and the hose should now fit onto the nozzle.

For larger Fog Machine
nozzles, first remove
inner adapter ring.

Para máquina de humo
más grande boquillas,
primero quitar anillo
adaptador interno

