



COMPACT CADET® 3 FloWise® RIGHT HEIGHT® ELONGATED ONE-PIECE TOILET

VITREOUS CHINA

COMPACT CADET® 3 FloWise® RIGHT HEIGHT® ELONGATED ONE-PIECE TOILET WITH SEAT

- 2403.128**
 - Vitreous china
 - Meets definition for HET (High Efficiency Toilet)
 - High Efficiency (4.8 Lpf/1.28 gpf)
 - Meets EPA WaterSense® criteria
 - Space saving compact design - Elongated Right Height bowl fits in the same space as a round front toilet
 - EverClean® surface inhibits the growth of stain- and odor-causing bacteria, mold, and mildew on the surface
 - Featuring the **Cadet® 3 Flushing System**
 - One-piece design
 - Elongated siphon action jetted bowl with 2-1/8" trapway
 - Internal trapway area fully glazed
 - Rim height at 419mm (16-1/2") for accessible application
 - Includes color-matched and design-matched solid plastic toilet seat and cover with slow-close hinges and EverClean® surface. Seat features unique sanitary seat lift tab
 - Oversized 3" Flush Valve with Chemical Resistant Flapper
 - 10" x 8" water surface area
 - 2 bolt caps
 - Chrome Trip Lever
 - 100% factory flush tested
 - 5 year warranty

- 2403.513** Same as above, except with Aquagurad liner in tank

- 2403.813** Same as above, except with trip lever on right side

- 2403.328** Same as above, less seat

Nominal Dimensions:

724 x 381 x 724mm (28-1/2" x 15" x 28-1/2")

Fixture only, supply by others

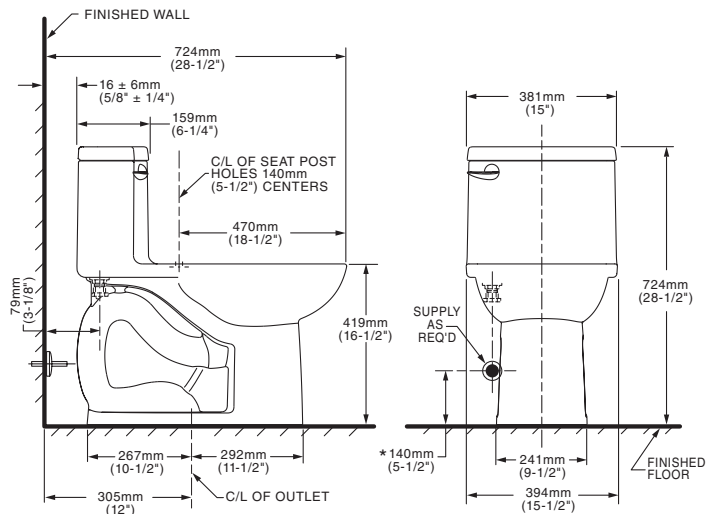
Compliance Certifications -

Meets or Exceeds the Following Specifications:

- ASME A112.19.2-2008/CSA B45.1-08 for Vitreous China Fixtures
- US EPA WaterSense® Specification for HETs

To Be Specified:

- Color:
 - White
 - Bone
 - Linen
- Supply with Stop:



NOTES:

THIS TOILET IS DESIGNED TO ROUGH-IN AT A MINIMUM DIMENSION OF 305MM (12") FROM FINISHED WALL TO C/L OF OUTLET. SUPPLY NOT INCLUDED WITH FIXTURE AND MUST BE ORDERED SEPARATELY. * DIMENSION SHOWN FOR LOCATION OF SUPPLY IS SUGGESTED.

IMPORTANT: Dimensions of fixtures are nominal and may vary within the range of tolerance established by ANSI Standard A112.19.2. These measurements are subject to change or cancellation. No responsibility is assumed for use of superseded or voided pages.



MEETS THE AMERICANS WITH DISABILITIES ACT GUIDELINES AND ANSI A117.1 REQUIREMENTS FOR ACCESSIBLE AND USABLE BUILDING FACILITIES-CHECK LOCAL CODES.



CADET® 3
Flushing System