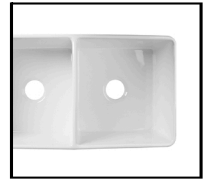


Model #DV-1K503

Overall Dimension: 32 11/16" L x 18" W x 10" D

Features:

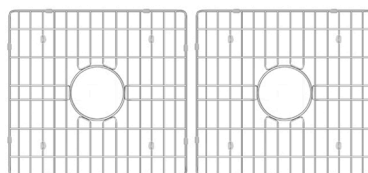
- Sloped bottom design of the kitchen sink can help drain water quickly and prevent water pooling.
- Farmhouse apron installation creates a seamless transition from sink to countertop that makes it easy to wipe water straight into the sink.
- Conveniently use 2 bowls independently for washing, soaking, rinsing, drying, and other household tasks, heat-resistant and sound-deadening fireclay material minimize sound and vibration for quieter use.
- Sink can accommodate a 3.5" garbage disposal.
- Products include a high-quality fireclay kitchen sink, 2 sink grids and 2 basket strainers.
- The water absorption rate of Fireclay sink is 9%, which is well above the qualified standard.
- This bathroom sink can be installed on both sides, you can choose which side to use as the front according to your decorating style.



Package Included:



● Farmhouse Kitchen Sink(DV-1K503)



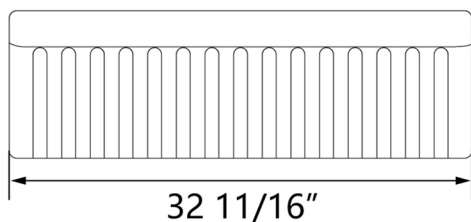
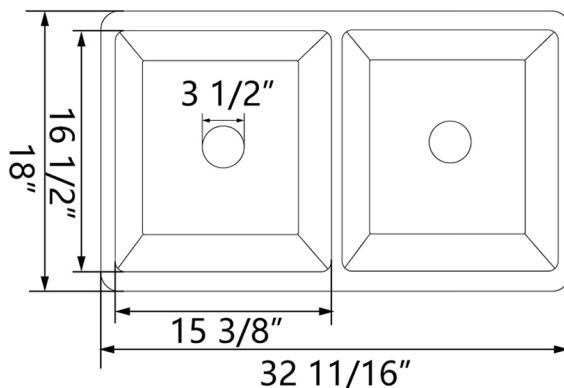
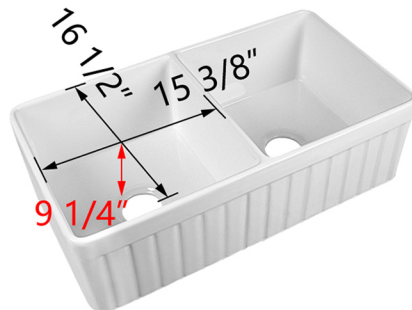
● Sink Grid(DV-K503G09)



● Basket Strainer(DV-1D902) x2

Technical Specifications:

- + Outer: 32 11/16" L x 18" W x 10" D
- + Inner: 15 3/8" L x 16 1/2" W x 9 1/4" D
- + Weight: 86 lbs
- + Drain: 3 1/2" diameter
- + Cabinet Size: 33 11/16" minimum



#DV-1K503

Sinks are individually handcrafted, so sizes may vary slightly.

1 Year Warranty

All DeerValley kitchen sinks come with our Warranty within one year.

