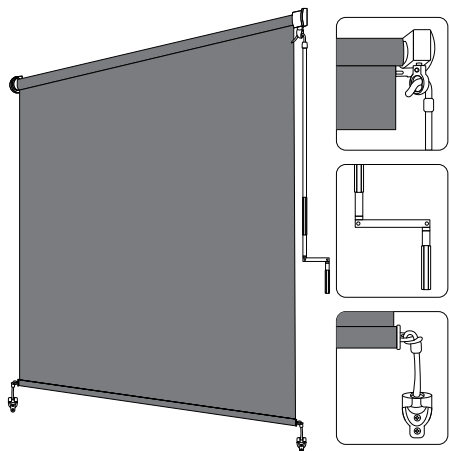


# AOSKY

## OUTDOOR ROLLER SHADE

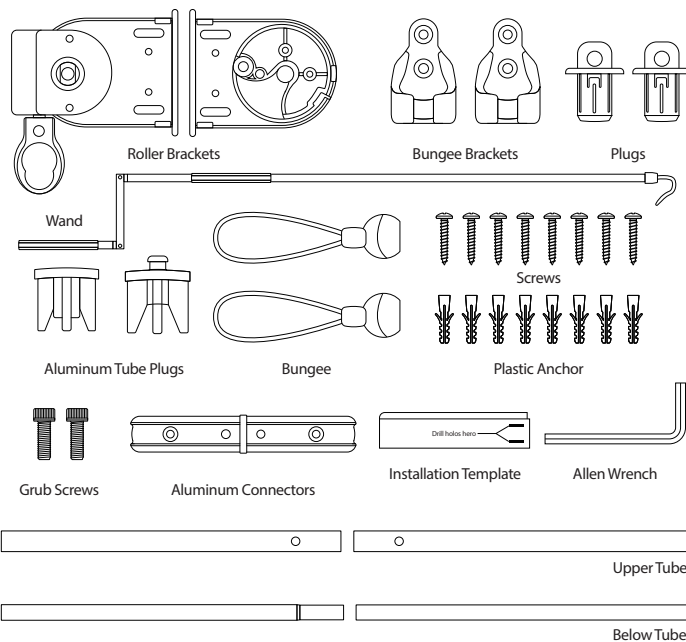


Thank you for choosing our product! We hope it brings you great satisfaction. Before proceeding with installation, please take a moment to carefully review the installation manual. Should you have any questions or need assistance, don't hesitate to reach out to us [support@aosky.com](mailto:support@aosky.com)

—we're here for you anytime!

# INSTALLATION INSTRUCTIONS

## CORDLESS OUTDOOR ROLLER SHADES

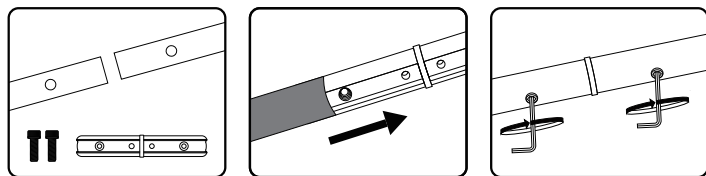


Note: Before installing the shade, ensure all the parts listed below are present. Do not assemble, install, or operate the shade if any parts are missing or damaged. For replacement parts, contact us by email request assistance with locating the missing or damaged part.

### STEP 1: SPLICING THE CONNECTING TUBE

Note: If you are purchasing a 48' wide outdoor roller shutter, there is no need to install an aluminium tube.

#### SPLICING THE UPPER TUBE

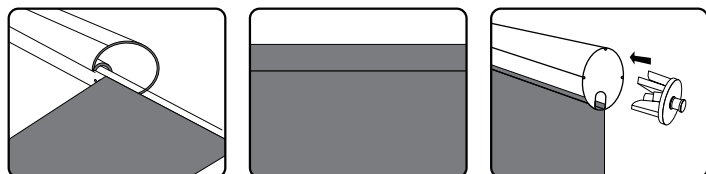


Preparing accessories

Mating the upper tube to the aluminium connector makes it a complete aluminium tube.

Tighten the screws

#### EMBEDDING FABRIC INTO THE TUBE'S GROOVE

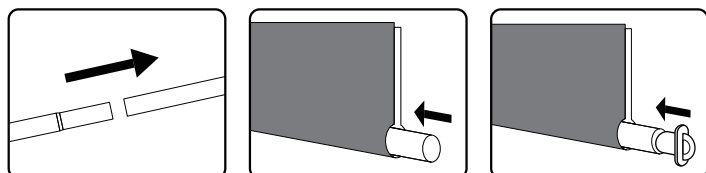


Insert the fabric with the hose into the ring groove of the aluminium tube

Pull the fabric tight.

Plug the plastic plug into the hole at the end of the aluminium tube.

#### SPLICING THE TUBE BELOW

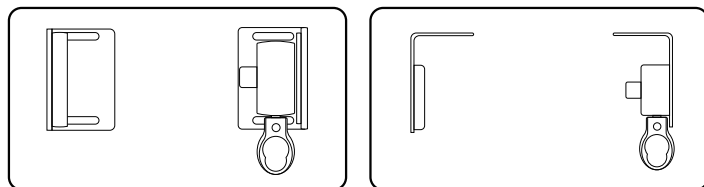


Assemble the bottom aluminium tubes

Pass the assembled tube through the other end of the roller shades.

put plastic plugs into both ends of the tubes.

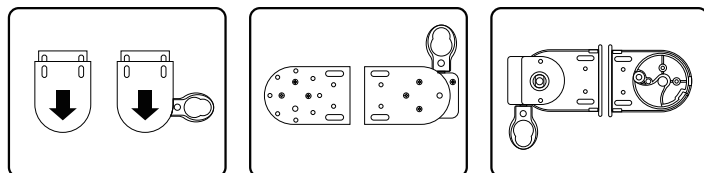
### STEP 2: DETERMINE YOUR TYPE OF INSTALLATION



Type A: WALL MOUNT

Type B: CEILING MOUNT

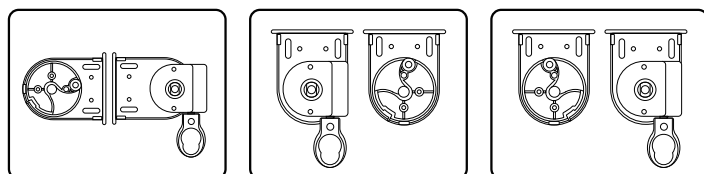
Tip: If you need to mount the crank bracket on the left side of the shade, or if you need to mount it on the ceiling, you will need to replace the bracket by rotating the hardware as follows



Remove the bracket cover

Remove Screws

Wall Install, Crank Left



Wall Install, Crank Right

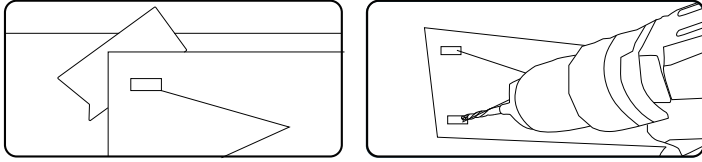
Ceiling Install, Crank Left

Ceiling Install, Crank Right

### IMPORTANT:

If you move your crank to the left side, you will need to reverse the roll on your fabric.

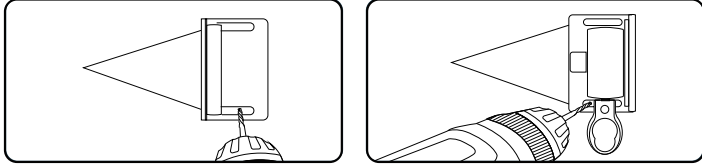
### STEP3: MARK HOLES FOR INSTALLATION



#### IMPORTANT:

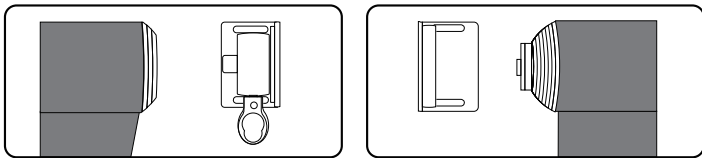
When mounting against a wall, ensure there is approximately 1 1/2" (1.5 inches) of clearance above the bracket to allow the hood to slide into the plug bracket.

### Step4: Install brackets



Install the crank bracket and plug bracket according to the type of mounting you select.

### Step5: Install shade

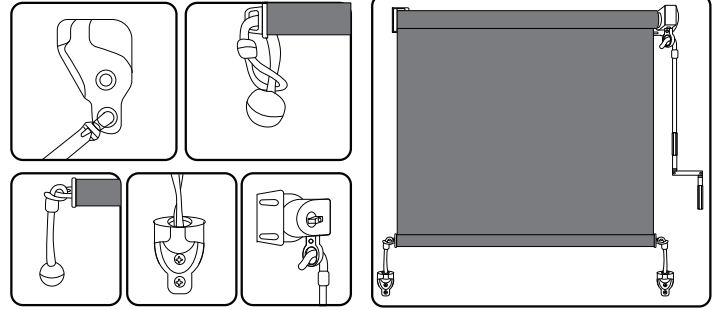


If your shade moves side-to-side, you may want to adjust the brackets to reduce any movement between the shade and the brackets.

To prevent your shade from moving side-to-side, roll the shade down and slightly loosen the screws. Push the brackets inward towards the shade and then tighten the screws.

### SECURING FABRIC

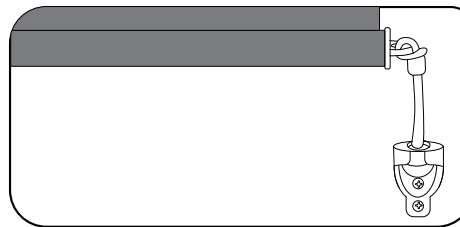
Install Bungee System



### OUR ADVANTAGE

#### Child Safe Cordless Operation

Wand operating mechanism easily raises or lowers the roller blind with wand required.



#### Bungee Tie-down System

Bungee tie-down system enable you to secure fabric from wildly flapping around.

If you are satisfied with our products, pls don't hesitate to recommend our product to your friends!  
If you have any questions,pls feel free to contact us by e-mail for after-sale service.

## ASK QUESTIONS

Q: Can the roller shades block UV rays effectively?

A: Yes, the roller shades are designed to provide excellent UV protection, reducing sun exposure and protecting indoor furniture.

Q: Are the roller shades suitable for indoor use?

A: Yes, they can be used both indoors and outdoors, depending on your needs.

Q: What tools are required for installation?

A: Basic tools such as a drill, screwdriver, and measuring tape are required. All necessary mounting hardware is included in the package.

Q: Are the roller shades safe for homes with children or pets?

A: Yes, the roller shades include a safety device for securing the cord to prevent potential hazards to children or pets.

Q: Can the roller shades withstand high temperatures?

A: Yes, the materials are designed to be durable and heat-resistant, making them suitable for hot weather conditions.

## Customer Service

- Product information
- Order related issues
- Suggestion
- Customization request

✉ :support@aosky.com

AOSKY

