

# ProLED Select® BackLit Panel Installation Instructions



## IMPORTANT

READ INSTRUCTIONS CAREFULLY BEFORE INSTALLING. KEEP THESE INSTRUCTIONS FOR FUTURE REFERENCE.

ProLED luminaires must be wired in accordance with the National Electrical Code and all applicable local codes. Proper grounding is required for safety.

THIS PRODUCT MUST BE INSTALLED IN ACCORDANCE WITH THE APPLICABLE INSTALLATION CODE BY A QUALIFIED ELECTRICIAN WHO IS FAMILIAR WITH THE CONSTRUCTION AND OPERATION OF THE PRODUCT AND THE HAZARDS INVOLVED.

**DISCONNECT POWER AT YOUR BREAKER PANEL BEFORE STARTING INSTALLATION OF THIS FIXTURE**

**PRODUCT CARE** - It may become necessary to clean the outside of the refractor/lens. Refractor/lens should be washed in a solution of warm water and any mild, non-abrasive household detergent, rinsed with clean water and wiped dry. Should optical assembly become dirty on the inside, wipe refractor/lens and clean in above manner, replacing damaged gaskets as necessary.

**WARNING** - Risk of fire or electric shock. ProLED Panel Light installation requires knowledge of luminaires and electrical systems. If not qualified, DO NOT attempt installation. Contact a qualified electrician.

**WARNING** - Risk of fire or electric shock. Suitable for damp locations. Make sure the power is off prior to installation.

**WARNING** - Risk of fire or electric shock. Suitable for flat T-Grid in insulated and non-insulated ceilings. Access above ceiling required.

**WARNING** - DO NOT install in unstable, loose or easily breakable surfaces.

**WARNING** - This product must be a minimum of 3"/76mm from any flammable materials

**WARNING** - DO NOT let objects impact or exert force on the surface of the luminaire.

**WARNING** - Vapor barrier must be suitable for 90° C

## Warranty Information:

This product is warranted for 5 years from the date of purchase. If this product does not perform to the specifications supplied on this package, send an email or write to the address below for product return and replacement. This replacement is the sole remedy available. Liability for incidental or consequential damage is expressly excluded.

Visit [www.halcolighting.com](http://www.halcolighting.com) for full warranty details.

Ceiling Designation	Fixture Dimensions: in. (mm)	Net Weight
2x2'	23.74"x23.74"x1.5"(603x603x38mm)	4.85 lbs. (2.2kg)
1x4'	11.85"x47.72"x1.5" (301x1212x38mm)	5.03 lbs. (2.3kg)
2x4'	23.74"x47.72"x1.5"(603x1212x38mm)	8.55 lbs. (3.9kg)

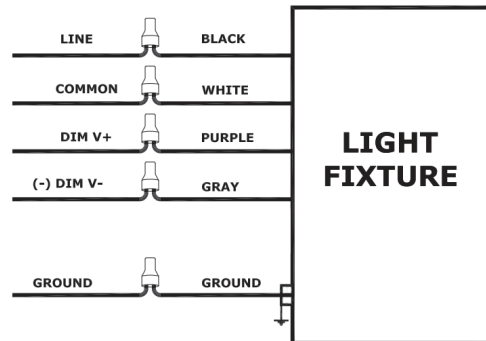
## 0-10V Dimming:

Universal voltage driver permits operation at 100V thru 277V, 50 or 60 Hz

For 0-10V Dimming, follow the wiring directions as shown.

1. Connect the black fixture lead to the Line supply lead.
2. Connect the white fixture lead to the Common supply lead.
3. Connect the ground wire from the fixture to the supply ground.
4. Connect the purple fixture lead to the (V+) DIM Lead
5. Connect the gray fixture lead to the (V-) DIM Lead.

Note: Do Not connect DIM (V+)/ DIM (V-) to the line voltage or ground supply.



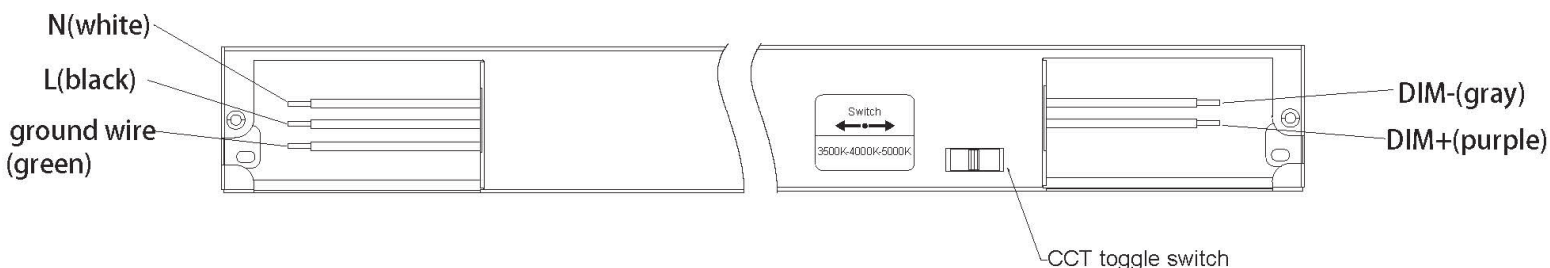
# ProLED Select® BackLit Panel Installation Instructions



## Field Select Feature

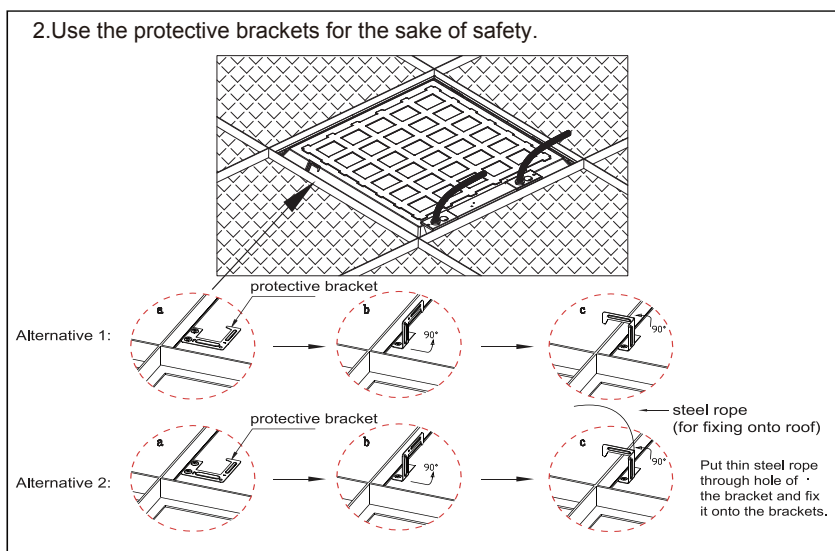
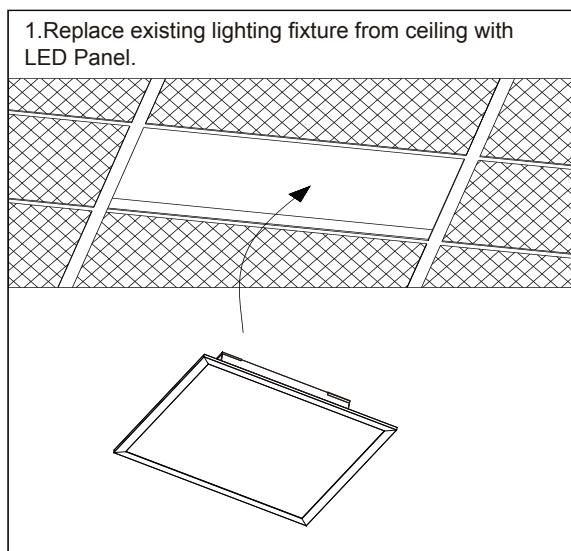
Use the following instructions to change the color temperature from the factory settings.

1. Select the desired wattage and color temperature by sliding the respective switch up or down
2. After the desired settings are met, continue with fixture installation.



## Installation Steps:

1. Make sure the POWER IS TURNED OFF at the source to the location at which you are installing the product.
2. Remove existing panel if applicable.
3. Before installing the panel in the ceiling, pull up the safety hooks on the back of the luminaire (Fig. 1)
4. Insert the panel into the ceiling so it rests securely on the T-grid. Bend each safety hook 90° so they extend over the T-grid on both sides of the fixture. (Fig. 2)



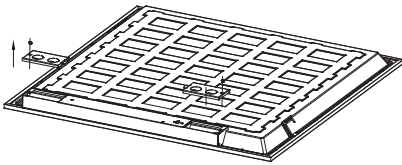
# ProLED Select® BackLit Panel Installation Instructions



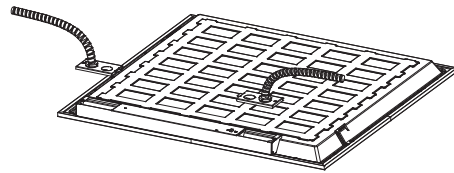
## Installation Steps:

5. Unscrew and remove the cover plate from the driver box. (Fig. 3)
6. Insert power supply using appropriate electrical fittings. Insert BLACK wire (Line) from the power supply into the wiring terminal marked with L. Insert the WHITE wire (Neutral) from the power supply into the wiring terminal marked with N. Connect the green wires (ground) together. (fig. 5)
7. For 0-10V dimming circuits, wire the grey (-) and purple (+) wires to the corresponding wiring terminals marked with GND (Grey) and 0-10V (Purple). (fig. 5)
8. For thru-wiring to another luminaire, utilize the second set of terminals marked “L” and “N” in the same manner detailed in step 6.
9. Reattach cover plate to driver box after wiring.

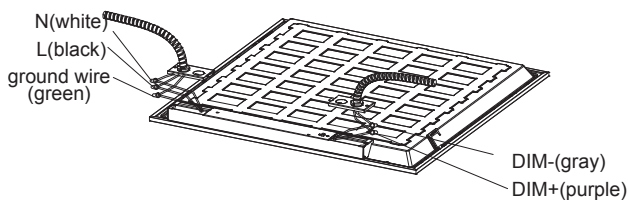
3. Unscrew the driver cover.



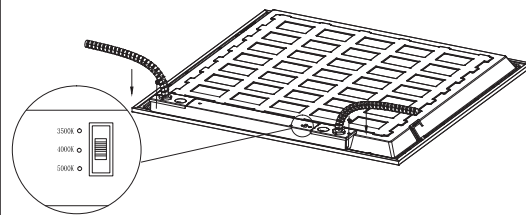
4. Connect the conduit to the driver box.



5. Connect other wires separately.



6. Put back the driver cover and fix it by screw.

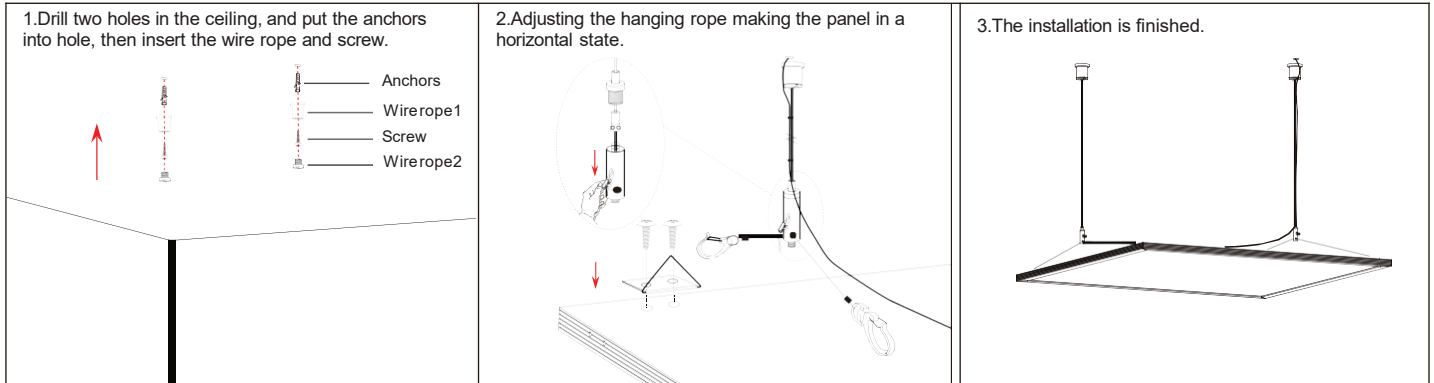


**Note: 2\*2ft: 2 pcs suspension kits needed for installation. 1\*4ft: 3pcs suspension kits needed for installation.**

# ProLED Select® BackLit Panel Installation Instructions



## Suspension Kit Installation:



Note: 2\*2ft: 2 pcs suspension kits needed for installation. 1\*4ft: 3pcs suspension kits needed for installation.

## Emergency Battery Backup Wiring Diagram

