

CASTLE ROCK PANEL INSTALLATION

All products must be allowed to acclimate; removed from boxes and stored flat at the installation site for a minimum of 72 hours or until properly acclimated prior to installation. Heat and moisture cause expansion. Best results are obtained by installing cool, dry product. **NextStone does not warrant against gapping caused by expansion and contraction. Always seat and attach panels tightly together. For more detailed instruction, go to www.NextStone.com**

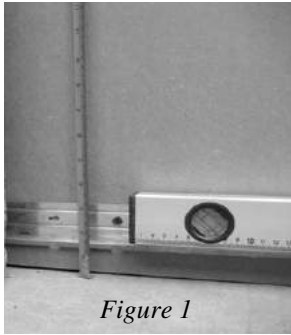


Figure 1

Starter Strip (SS)- Determine the height above ground for the bottom of the panels. Strike a level line 2 3/4" up from this point. Attach the top of the SS on this line. (Fig. 1)

Determine which type of wall installation is required.

1) Paneling the wall from an inside corner to an inside corner.

Install Window and Door Trim (WDT) on both ends of the wall. (see last paragraph for detail on installing WDT).

Insert panel into SS and slide behind WDT. Attach to the wall through the screw indicator marks on the top and right hand end tongues. (Fig. 2) Firmly press the next panel against the first panel and repeat working left to right. At the end of the row; cut the right hand end of the final panel to fit behind WDT. Use the off fall from that panel to start the new row under the left end WDT. Stagger the joints of the panel ends up the wall. If necessary, cut some additional length from the off fall piece on some rows to prevent panel ends from lining up vertically.

2) Paneling a wall with one outside corner on the right.

Dry fit the first corner into the starter strip. Secure with screws if necessary. Moving from right to left: dry fit panels tightly across the wall. Cut the left hand end of the final panel under the WDT or flush to the wall. Remove the dry fit panels and corner piece. Panel the wall from left to right as in example 1). Reattach corner over right hand panel. Repeat on each row.

3) Paneling a wall with outside corners on the right and left.

When there are 2 outside corners with no break in the wall (no window or door opening)– a panel in the row will need to be cut if the wall will not accommodate all full panels. On each course, work from left to right and dry fit as described earlier. Decide on each course which panel to cut. Dry fit full panels from each end until less than one panel length remains in the middle. Measure from the rock edge on the right side of the left panel to the left edge of the right panel (Fig. 3). Cut the final panel to this length. Stagger the placement of the cut panels up the wall to avoid a vertical line. After cutting the panel, lightly rasp the top of the cut edge to smooth the edge and blend it with the rocks of the next panel (fig 4). Touch up any exposed Polyurethane edges with a NextStone Touch Up Paint Kit and Caulk (sold separately) (Fig 5). Slide in the final panel and attach (Fig. 6).

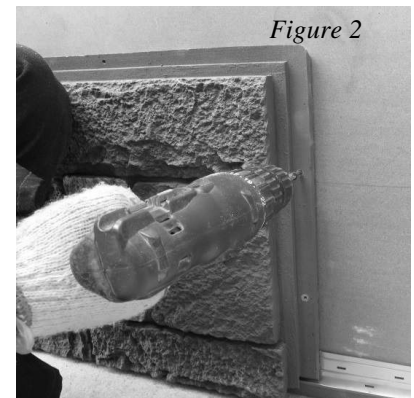


Figure 2

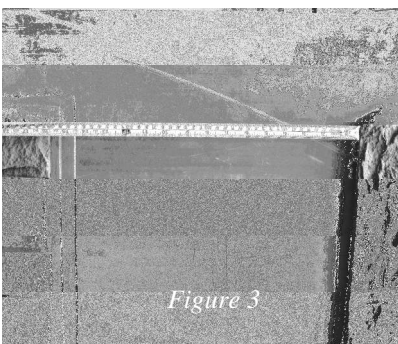


Figure 3

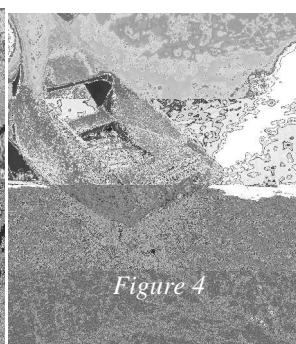


Figure 4

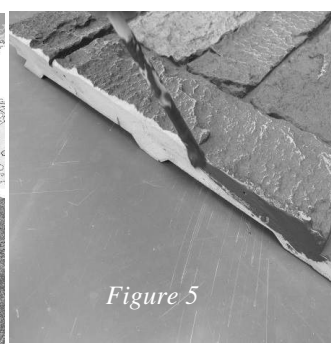


Figure 5

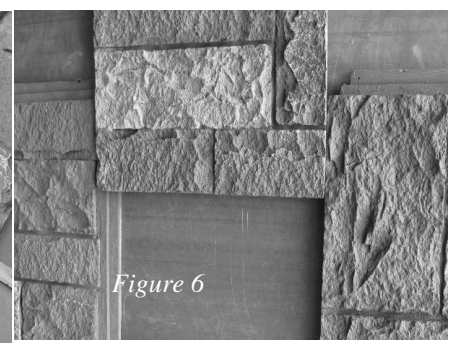
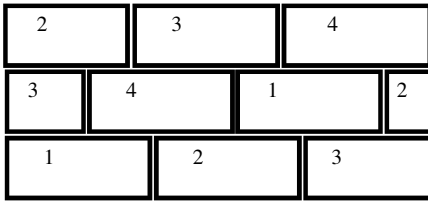


Figure 6



The illustration shows an installation using drops from the previous course to start each new course. If there are no drops, randomly cut the starting panel to length to stagger joints.

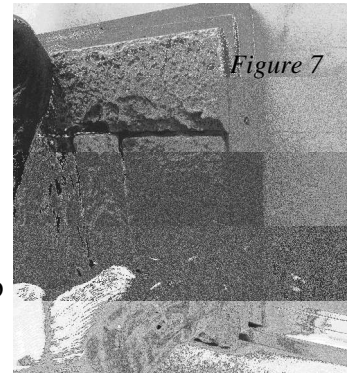


Figure 7

Outside Corner Installation

Step 1-Start the 1st row from the outside corner of the wall. Place starter strip top 2 3/4" above the desired starting height of the wall, recess the strip 2" from each side of the corner edge.

Step 2-Set the Castle Rock outside corner piece against the corner and down into the starter strip. Use the screw guides and place at least 3 screws along the tongue. Place 2 screws in the right lap side of the panel where indicated. (Fig. 7)

Step 3-Attach the panels working out from each side of the corner as previously described. (Fig. 8)

Note: There are 4 patterns of the Castle Rock Outside Corner. 2 Left hand patterns and 2 right hand patterns. Check for the number on the inside of the piece. They are numbered 1 through 4. Alternate left and right hand corners with each course to alternate panel offsets and to prevent pattern recognition.



Figure 8

Using Outside Corners to Wrap Columns

Fir out the column to 13 3/4" X 13 3/4". Attach starter strip on each face, stopping 2" from each corner. Dry fit corners 1,3 and 1,3. Slide down onto the starter strip and attach all pieces where indicated on the screw hem. Dry fit corners 2,4 and 2,4. Slide down and attach as described above. To prevent pattern recognition use corners 3,1 and 3,1 on the 3rd the row. Use corners 4,2 and 4,2 for the 4th row. (Fig. 9) Repeat from 1,3– 1,3 to desired height

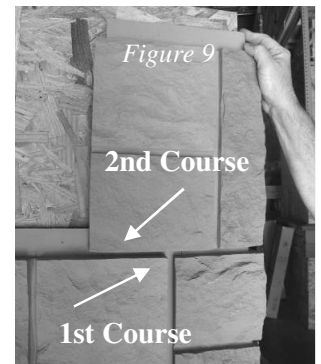


Figure 9

Castle Rock—Installing Ledger and Trim

The Castle Rock panel has a “double step” along the right side and top to better hide the panel joints and allow for expansion/contraction.

1. Rip the panel down and remove the screw hem using a table saw (preferable) or hand saw. (Fig. 10) The resulting panel will be 14" in height.
2. Face screw the panel (Fig. 11), so the ledger fits flush on top .(Fig. 12) The ledger should hide the heads.
3. Attach the ledger by screwing through the top edge to the wall. Flashing will cover the screw holes.

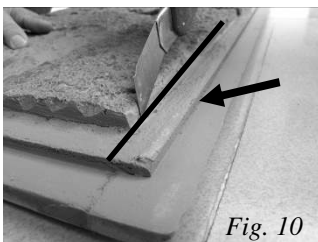


Fig. 10

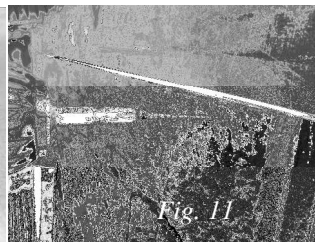


Fig. 11

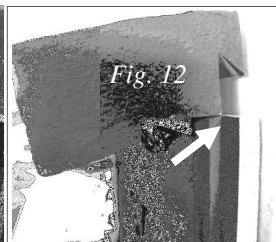


Fig. 12

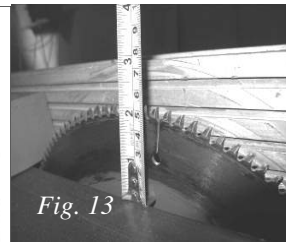


Fig. 13

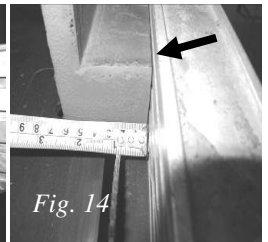


Fig. 14

To Modify the Window/Door Trim (WDT)

Castle Rock panels are 3/4" less thick than other NextStone products. As a result, the WDT sits clear of the surface by 3/4". If a tighter clearance is desired, rip down the back of the WDT by 3/4". A table saw provides the most consistent results.

1. Set the blade height to 2 1/4" (Fig. 13), with the fence 3/4" from the outside of the blade.
2. Place the WDT with the base down, and the back face against the fence (Fig 14).