

# **PF6044AC**

## **22" dia Bird Bath KD- Aged Charcoal**

### **Assembly Instruction**

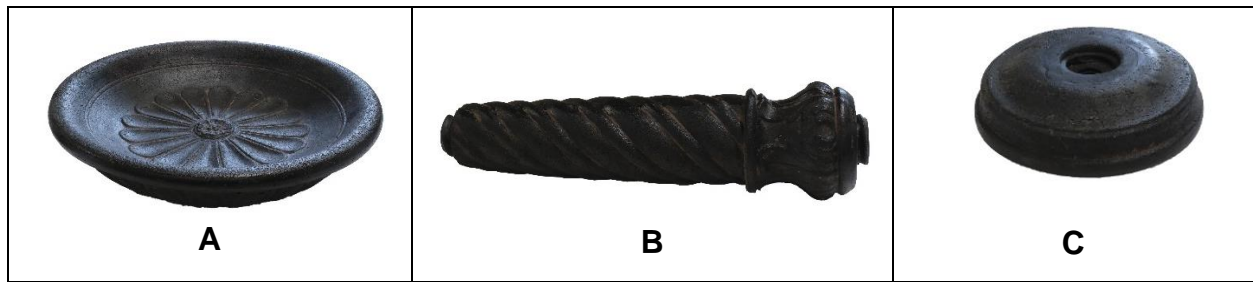


Pause and enjoy your feathered friends in the garden.

This exclusive, handcrafted European inspired cast stone Bird Bath is made from an artist carved original and is constructed with a blend of natural stone, resin and fiberglass. The 85% crushed natural outer surface is stained to an old world patina and weathers to a beautiful time worn hue. Light weight, easy to assemble and weather resistant.

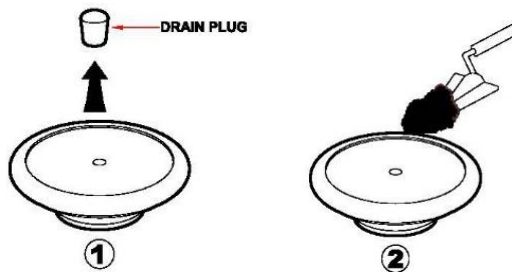
For outdoor use only.

## Components

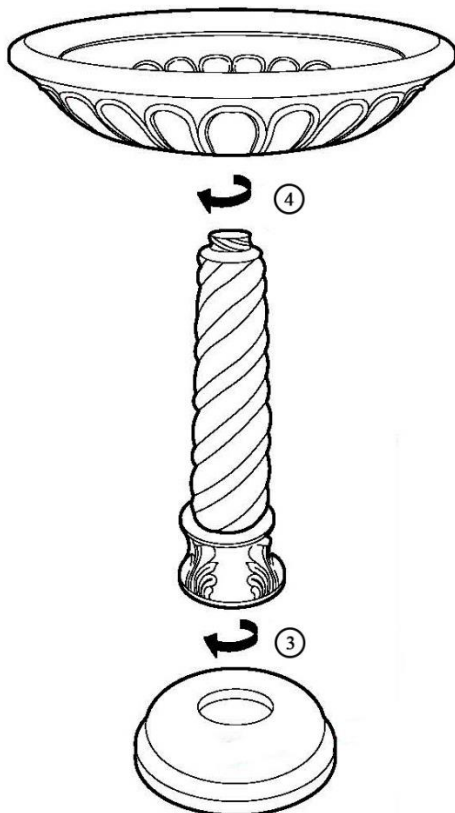


## Instructions

1. Remove the drain plug from the base
2. Fill base with 0.2 gallons of sand. Replace drain plug.



3. Assemble birdbath as shown below.



## Cleaning and Maintenance:

Wash with clean water and soft brush when necessary to remove dirt.

In cold weather, drain all water and cover when not in use. If left uncovered, water in the crevices can freeze and cause outer layer to pit.

## Color Disclaimer:

Because this cast stone Bird Bath has stained outer surfaces which consist of 85% natural stone and is handmade, the appearance of each Bird Bath may vary slightly by color, texture, size, and shape.