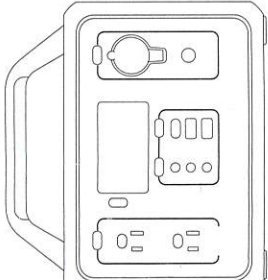




POWER STATION

# USER MANUAL

300W Portable Power Station  
Emergency power source



Model : MPS300

## Preface:

Thank you for purchasing our 300W Portable power station. This portable power station had 280Wh battery capacity. Supports solar panels, vehicle charging and provides power for many other devices. It comes with AC outlets, 12V DC output ports, Type-C port, Car port and USB ports for your convenience. Perfect for outdoor travel, it is compatible with most electronic devices such as drones, laptops, lights, Mobile phones, tablets, drones and cameras etc.

You can charge your electrical or digital products with this unit in case of power failure or you need to charge on a roadtrips.

At the same time, it's also can be used as an emergency power supply, especially suitable for power failure caused by various natural disasters, such as: Typhoons, Floods, Hurricanes, Earthquakes, Forest Fires, Snowstorms and low-temperature disasters etc. It is also suitable for camping activities, outside electrical appliances charging, night market power supply, medical power supply, household electricity storage and so on. And it can also be used as an Emergency Light. Before using this unit, please read this manual carefully.

## Package Contents:

- 1 x 19V/3.78A AC Power Adapter
- 1 x AC Power Card-US Standard
- 1 x MC4 Cable
- 1 x Car Cigarette Cable
- 1 x User manual

## Warm Tips:

1. This product built in lithium battery, to reduce associated hazardous risks, please avoid fire sources and proper disposal is required.
2. Do not use this product in the water or a damp environment.
3. Handle with care, do not use if product is damaged.
4. Turning off the power to save electricity if not use for a long time To extend the battery life, please charge the battery every other month if unused for a long time.

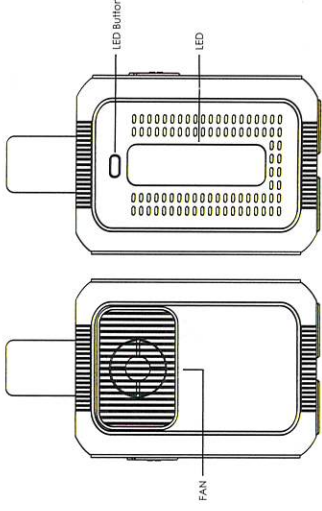
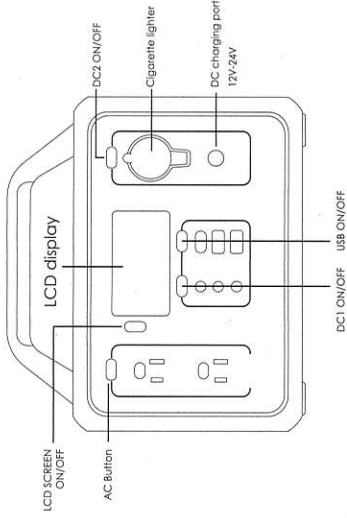
## Product Parameters:

Capacity	280Wh(26Ah/10.8V)
Continuous power	300W Max
Over-load protection	340W±20W
Peak Output power	600W
Output waveform	Pure sine wave
External charger	AC100-240V to 19V 3.74A
AC Output Voltage	AC110V±10%
Conversion efficiency	≥85%
Under-voltage protection	8.5±0.5V
Over-voltage protection	13±0.5V
Fuse	AC 4*20A DC 2*20A
Overload Protection Mode	Locked, need re-start
short circuit protection Mode	Locked, need re-start
Over Temperature protection Mode	Locked, need re-start
USB output	TYPE-C: 5V3A, 9V2A PD18W MAX
DC 12V Output	5V2.4A*2 AUTO MAX 1 x Cigarette Lighter/ 9.0V~12.6V/8A Max 3 x DC Rated Output / 9.0V~12.6V/3A Max
AC Plug support	2* 2-pin US AC outlet
LED Lighting	2W MAX, 3 Levels( Low, Medium, High ) + SOS
Operation Temperature	0°C~40°C
Charge While Discharge	Support
Product Size	230*120*200mm/9.06*4.72*7.87in
Net Weight	6.61lb

## Product Diagram



NOTE: Charging time is dynamically and changes as power of connected charging devices, all the time data in this screen only for reference.



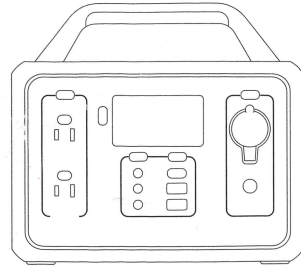
48+ Times (for 10 mobile charges)	6 Hrs (radio 12V)	4.8 Hrs (DVD 12V)	4.1 Hrs (New category)	8+ recharge (phone)
12 Hrs (for 1000mAh)	3.4 Hrs (for 1000mAh)	20 Hrs (1000mAh)		

# MASSIMO

POWER STATION

## USER MANUAL

300W Portable Power Station  
Emergency power source



Model : MPS300

### Preface:

Thank you for purchasing our 300W Portable power station. This portable power station had 280Wh battery capacity, Supports solar panels, vehicle charging and provides power for many other devices. It comes with AC outlets, 12V DC output ports, Type-C port, Car port and USB ports for your convenience. Perfect for outdoor travel, it is compatible with most electronic devices such as drones, laptops, lights, Mobile phones, tablets, drones and cameras etc. You can charge your electrical or digital products with this unit in case of power failure or you need to charge on a roadtrips. At the same time, It's also can be used as an emergency power supply, especially suitable for power failure caused by various natural disasters, such as: Typhoons, Floods, Hurricanes, Earthquakes, Forest Fires, Snowstorms and low-temperature disasters etc. It is also suitable for camping activities, outside electrical appliances charging, night market power supply, medical power supply, household electricity storage and so on. And it can also be used as an Emergency Light. Before using this unit, please read this manual carefully.

### Package Contents:

- 1 x 19V/3.78A AC Power Adapter
- 1 x AC Power Cord-US Standard
- 1 x MC4 Cable
- 1 x Car Cigarette Cable
- 1 x User manual

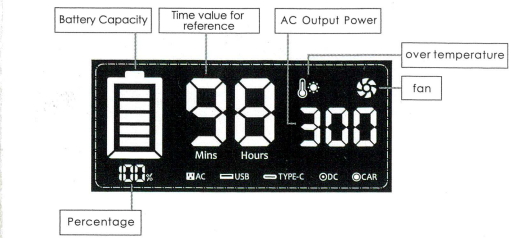
### Warm Tips:

1. This product built in lithium battery, to reduce associated hazardous risks, please avoid fire sources and proper disposal is required.
2. Do not use this product in the water or a damp environment.
3. Handle with care, do not use if product is damaged.
4. Turning off the power to save electricity if not use for a long time To extend the battery life, please charge the battery every other month if unused for a long time.

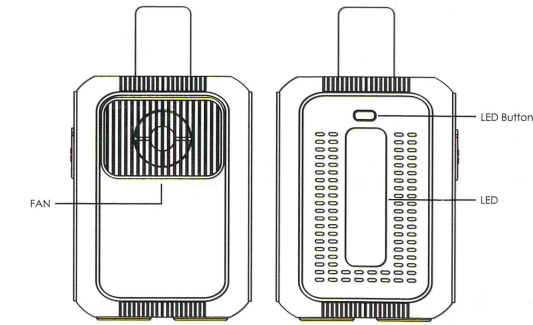
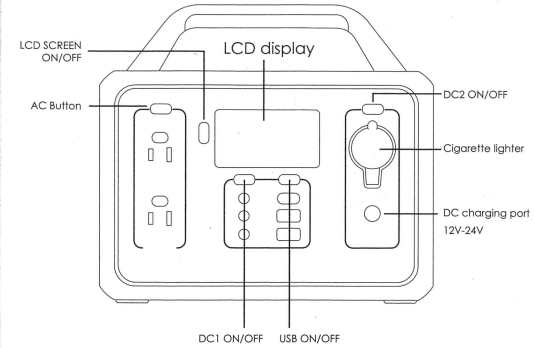
### Product Parameters:

Capacity	280Wh(26Ah/10.8V)
Continuous power	300W Max
Over-load protection	340W±20W
Peak Output power	600W
Output waveform	Pure sine wave
External charger	AC100-240V to 19V 3.74A
AC Output Voltage	AC110V±10%
Conversion efficiency	≥85%
Under-voltage protection	8.5±0.5V
Over-voltage protection	13±0.5V
Fuse	AC 4*20A DC 2*20A
Overload Protection Mode	Locked, need re-start
short circuit protection Mode	Locked, need re-start
Over Temperature protection Mode	Locked, need re-start
USB output	TYPE-C: 5V3A, 9V2A PD18W MAX 5V2.4A*2 AUTO MAX
DC 12V Output	1 x Cigarette Lighter/ 9.0V~12.6V/8A Max 3 x DC Rated Output / 9.0V~12.6V/3A Max
AC Plug support	2* 2-pin US AC outlet
LED Lighting	2W MAX, 3 Levels (Low, Medium, High) + SOS
Operation temperature	0°C~40°C
Charge While Discharge	Support
Product Size	230*120*200mm/9.06x4.72x7.87in
Net Weight	6.61Lb

### Product Diagram



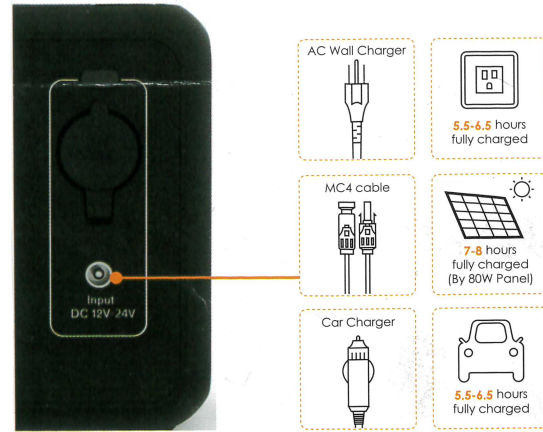
NOTE: Charging time is dynamically and changes as power of connected charging devices, all the time data in this screen only for reference.



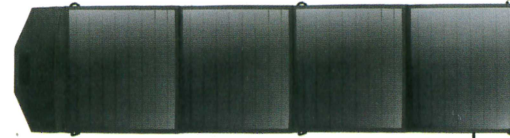
	48+ Times (for 5V mobile charges)		12 Hrs (20W energy-saving lamp)		8+ recharge (250mAh)
	6 Hrs (laptop 13")		3.4 Hrs (32" LCD TV)		4.1 Hrs (4000mAh power bank)
	4.8 Hrs (20W fan)		20 Hrs (12V 3W LED)		5.7 Hrs (with AC charging, DC to get 20 hours+ (20W))

### 3 Ways of Recharging

- 1.AC Wall Outlet: refuels this power station by AC power from home wall outlet; Charging Time: about 5.5-6.5 hours
- 2.Car cigarette Charging:DC power from 12V/24V vehicles. Charging time about 5.5-6.5 hours.  
NOTE:12V vehicles need to start car engine while charging by car charging way.
- 3.Solar Charging: MC4 adapter cable for solar panel  
It's affected by sunlight, type and power of solar panels.  
( Charging time around 7-8 hours by 80W monocrystal silicon solar panel under sufficient sunlight )

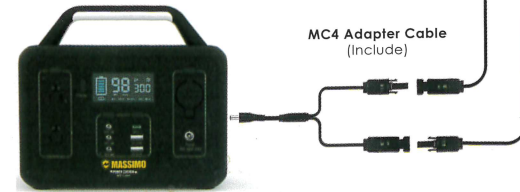


### Solar Panel Connection Way



For solar panel selection: No matter what kinds of materials & power, just to ensure the open-circuit voltage of solar panel within 24V.

#### 80W solar panel recommended



### Why choose this item ?

- \* Compatible with any 18V 60W-200W solar panel,built-in MPPT controller system to help charging efficiency in creasing.
  - \* LCD screen display-shows all battery operating status easily and timely. Charging power and required charging time are visualized. LCD display on/off can be controlled by separate switch.
  - \* Automotive Grade battery cell with Battery management system. Charging and discharging cycles around 1000 times,DOD≥80%, Ultra-safe lithium battery pack.
  - \* Each group output has separate switching control and separate over-current protection.
  - \* Built-in 3-level brightness LED light with SOS mode.
- With the powerful LED light built-in, this power station has two lighting modes: press the button once for immobile while light mode(3-level adjustable) and press twice for SOS mode.
- \* Multiple output ports , load up to 9 devices at the same time.

### Multiple Usage Scenarios

#### Emergency:

Can be used as an emergency power supply,especially suitable for locations that are prone to severe weather patterns and natural disaster related power failures including typhoons,floods,hurricanes,earthquakes,forest fires, snowstorms and low-temperature disaster prone areas.

#### Outdoor activities including:

Road Trips,Camping,Outdoor celebrations,Fishing,Climbing,outdoor photography enthusiasts,RC helicopter Drone Charging,Farming and Bird watching.

#### Indoor activities:

Home&office electrical device charging,energy-saving lamps,television, mini refrigerators,Christmas decoration lights,printers,laptops,fans and smart mobile phones.

### FAQS and Solutions

- 1.Solar Panel Selection:  
No matter what kinds of materials and power,only to ensure the optimum operating voltage(VMP)of solar panel within 24V.The higher power you choose, the charging speed will be faster.To meet the best cost-efficient solution,80W solar panel recommended.
- 2.Auto sleep energy saving feature:  
This unit has an energy-saving sleep mode function that automatically activates if the unit detects that there are no devices connected.The unit will shut down and stop power output if no device is connected after 12 hours.
- 3.Can you use this battery to jump start your car battery?  
NO,It is not suitable to use the unit to jump start a car battery.
- 4.Can you charge the battery using solar while charging your phone at the same time?  
Yes,you can.
- 5.What kinds of protection features of this unit?  
Short-circuit protection,Over-current protection,over-voltage protection, Low-voltage protection,Over-load protection,over-temperature protection.
- 6.Will this be able to power up an internet router?  
It can ,but how long it runs for depends upon the electrical current demands of the router.
- 7.Can users replace the power station battery by themselves?  
NO.Battery replacement must be done by a qualified professional and the used battery must be disposed of properly.

### Warranty & Customer Service Support

We offer a 1-year warranty against manufacturing defects.  
If you have any questions or issues,please Email our customer service team for help at [service@massimomotor.com](mailto:service@massimomotor.com).  
Massimo MotorSports LLC  
Address:3101 W Miller Rd Garland TX75041 US