

Item # 1002 782 609  
1002 782 625

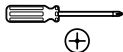
Model # 9235997 (White)  
9235998 (Brown)

# EVERBILT

## Use and Care Guide

Economy Magnetic Catch  
with Strike

### TOOLS REQUIRED



Phillips screwdriver

### PACKAGE CONTENTS



A - Catch x 1



B - Plate x 1



C - Catch Screw x 2

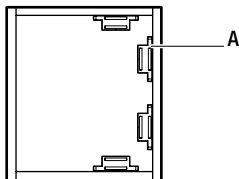


D - Plate Screw x 2

## Installation

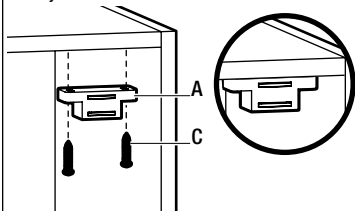
### 1 DETERMINING THE INSTALLATION LOCATION

- You can attach the catch (A) on the top, bottom, or side of the cabinet.



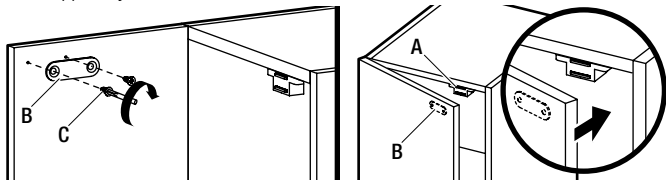
### 2 INSTALLING THE CATCH

- Use two screws (C) to attach the catch (A) to your chosen installation location.



### 3 INSTALLING THE PLATE

- Attach the plate (B) to the cabinet door using the plate screws (D). Ensure the plate (B) is aligned with the catch (A) when you close the cabinet door.



## Warranty

Subject to the terms of this warranty, the Manufacturer warrants to the original consumer purchaser that the product will be free from defects in material and workmanship. If the product does not comply with this warranty, the Manufacturer will repair or replace the product or, at the Manufacturer's option, refund the purchase price. Repair, replacement, or refund of the original purchase price is your sole remedy under this or any other warranty on the product, whether expressed or implied. For additional details and questions, please contact Everbilt Customer Service at 1-800-305-1726.