

Dear customer:

The product you have purchased has been engineered and manufactured to the highest standards of quality and performance.

Please read the instruction sheet carefully before installing your new shade.

PACKAGE INCLUDES

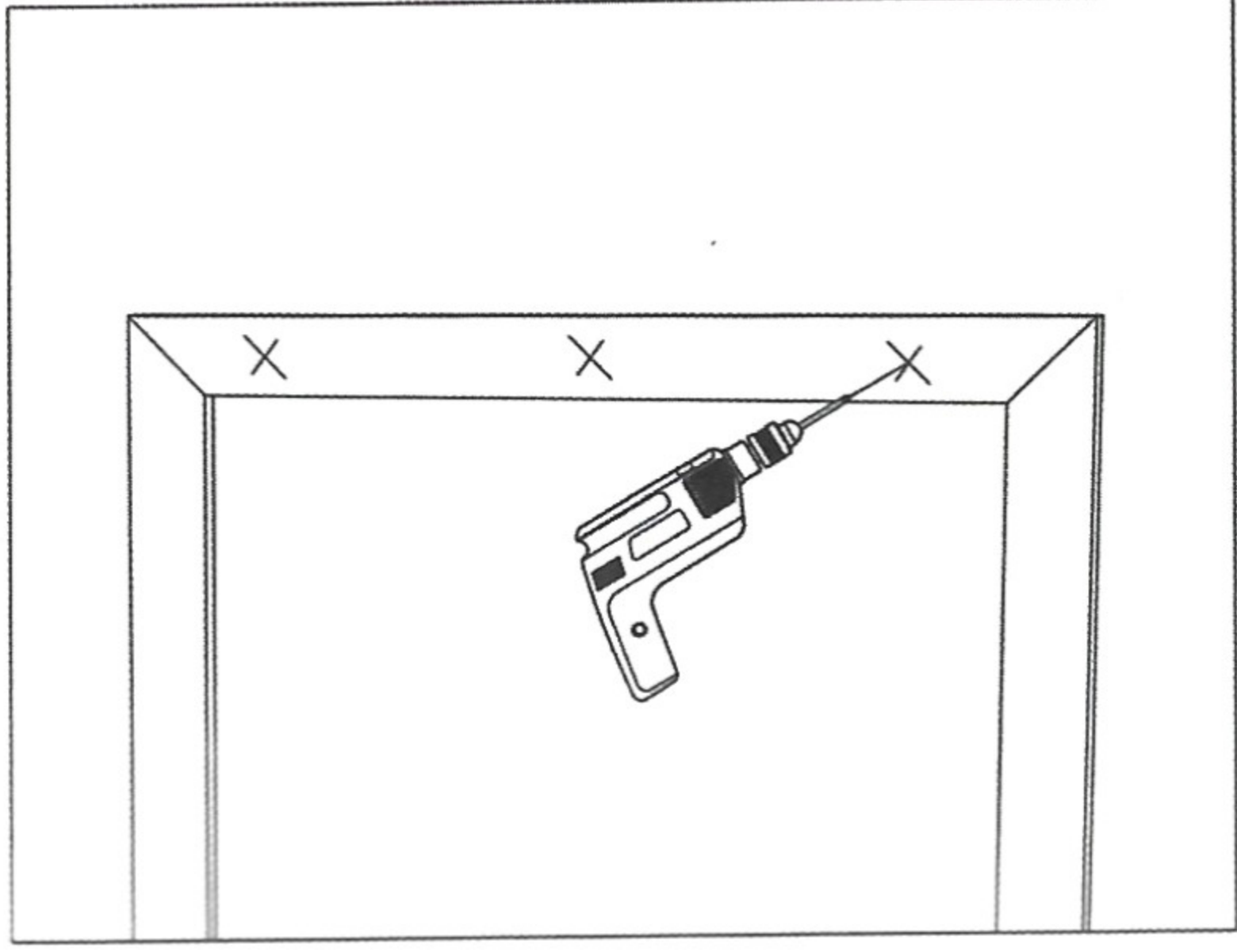
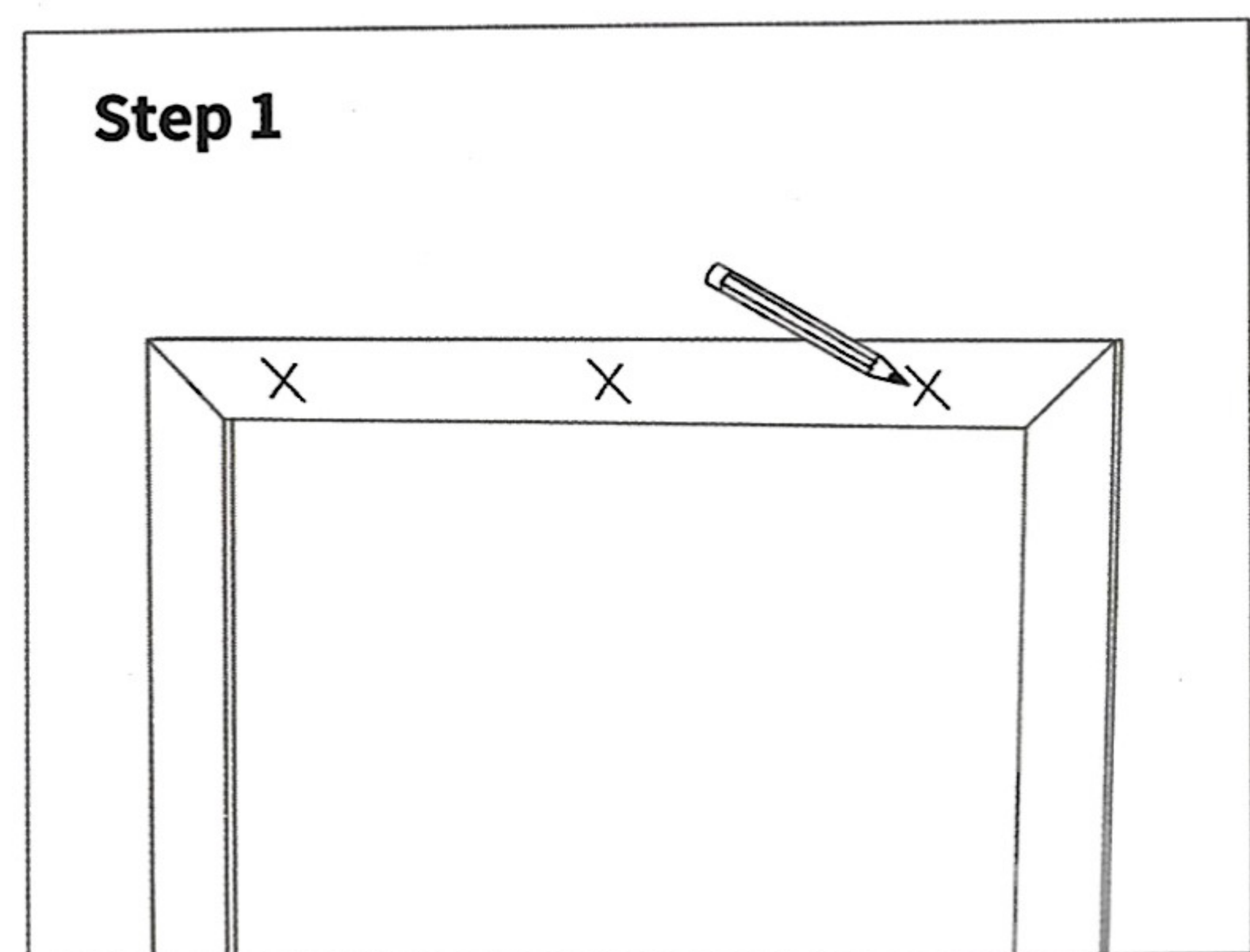


HARDWARE

| Width (in) | 36in | 48in | 60in | 72in | 96in |
|-------------|--------|---------|---------|---------|---------|
| Width (cm) | 91.4cm | 121.9cm | 152.4cm | 182.9cm | 243.8cm |
| A. Eye hook | 2 | 2 | 3 | 3 | 4 |
| B. Fastener | 2 | 2 | 3 | 3 | 4 |

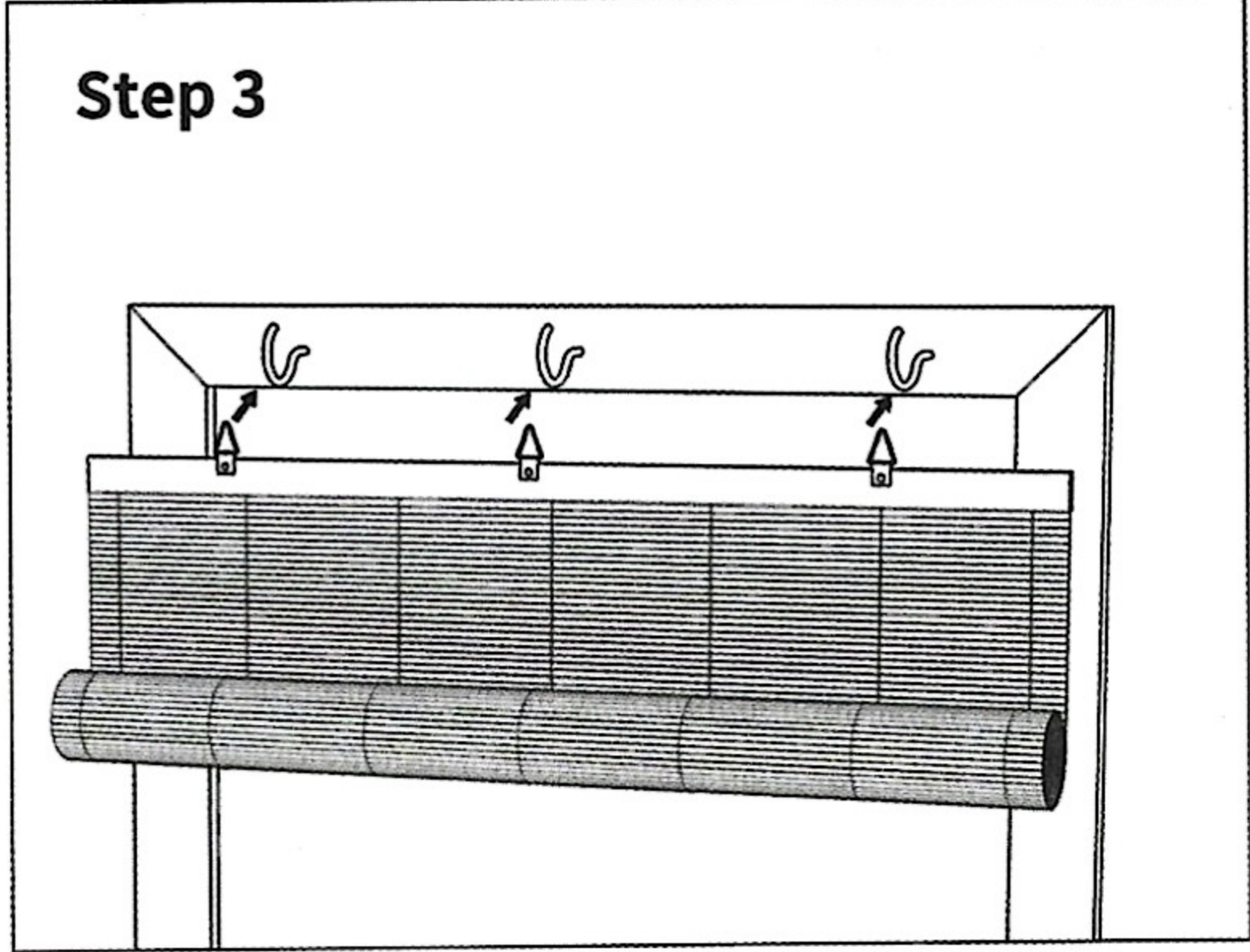
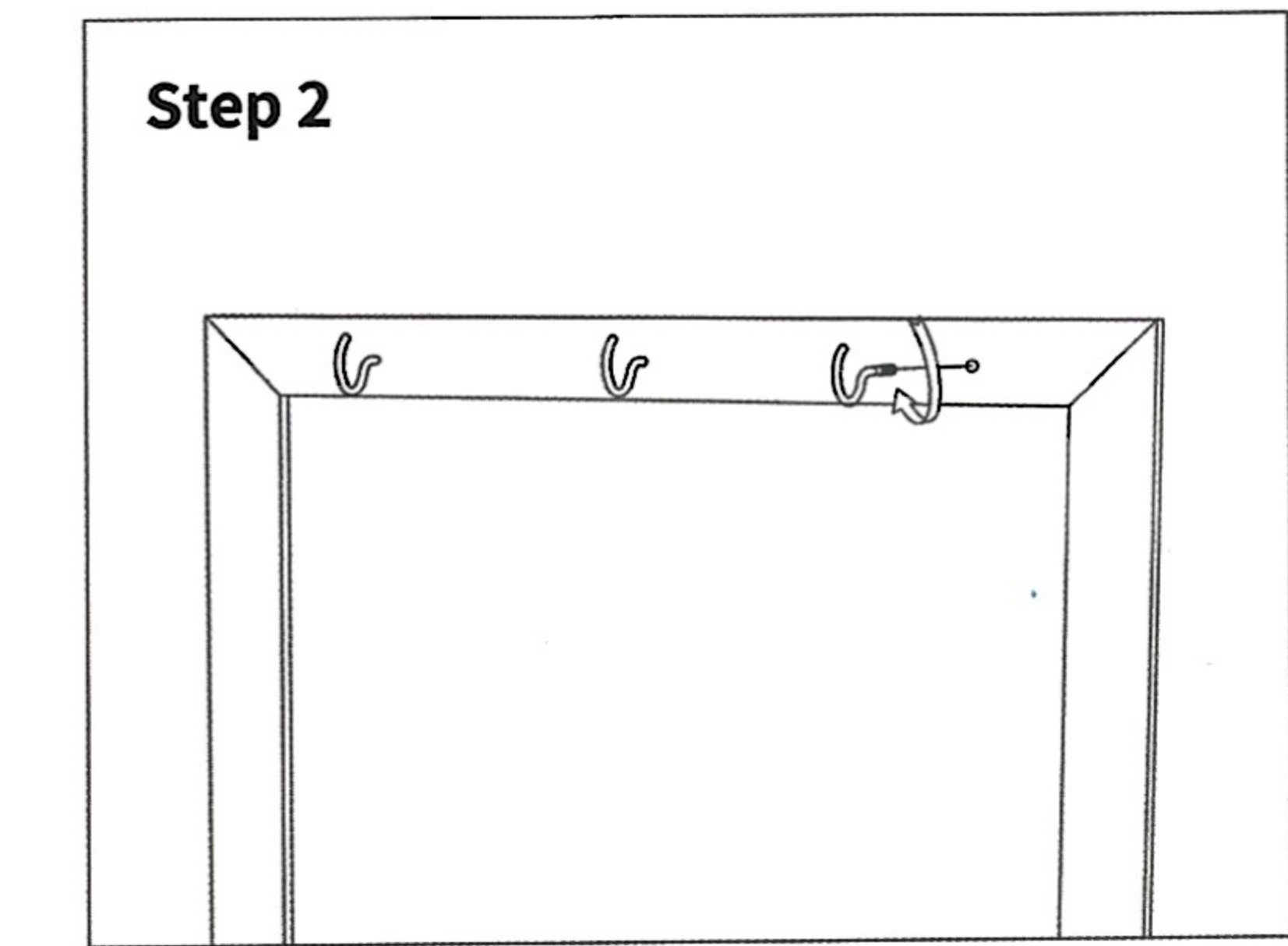
TOOLS NEEDED

- 1.Tape Measure
- 2.Drill & 1/16” bit
- 3.Pliers
- 4.Pencil



1.POSITION SHADE

Make sure your marks for the screw holes are level or at least the same distance from the top of the window. For best accuracy, measure the distance with tape measure.

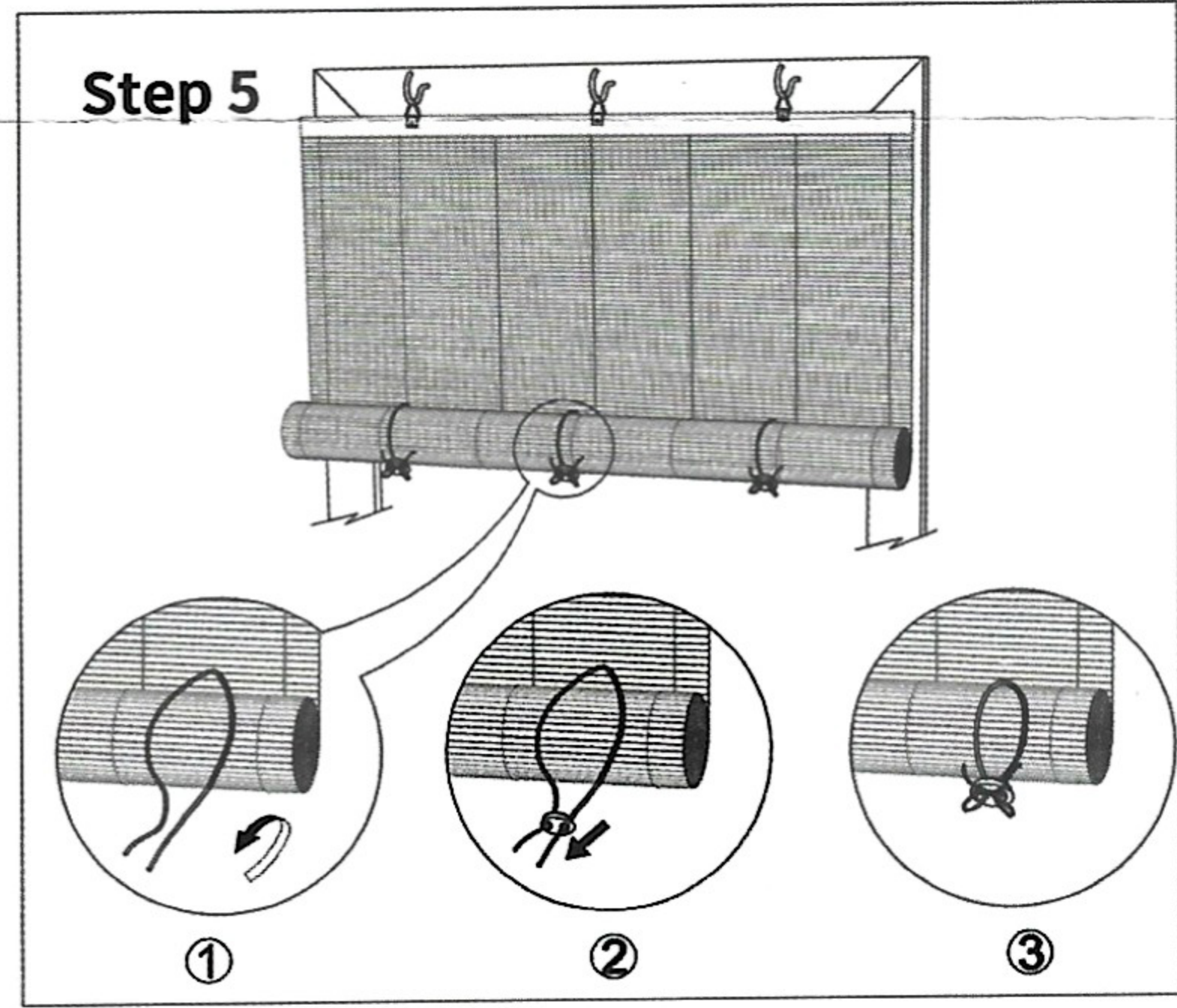
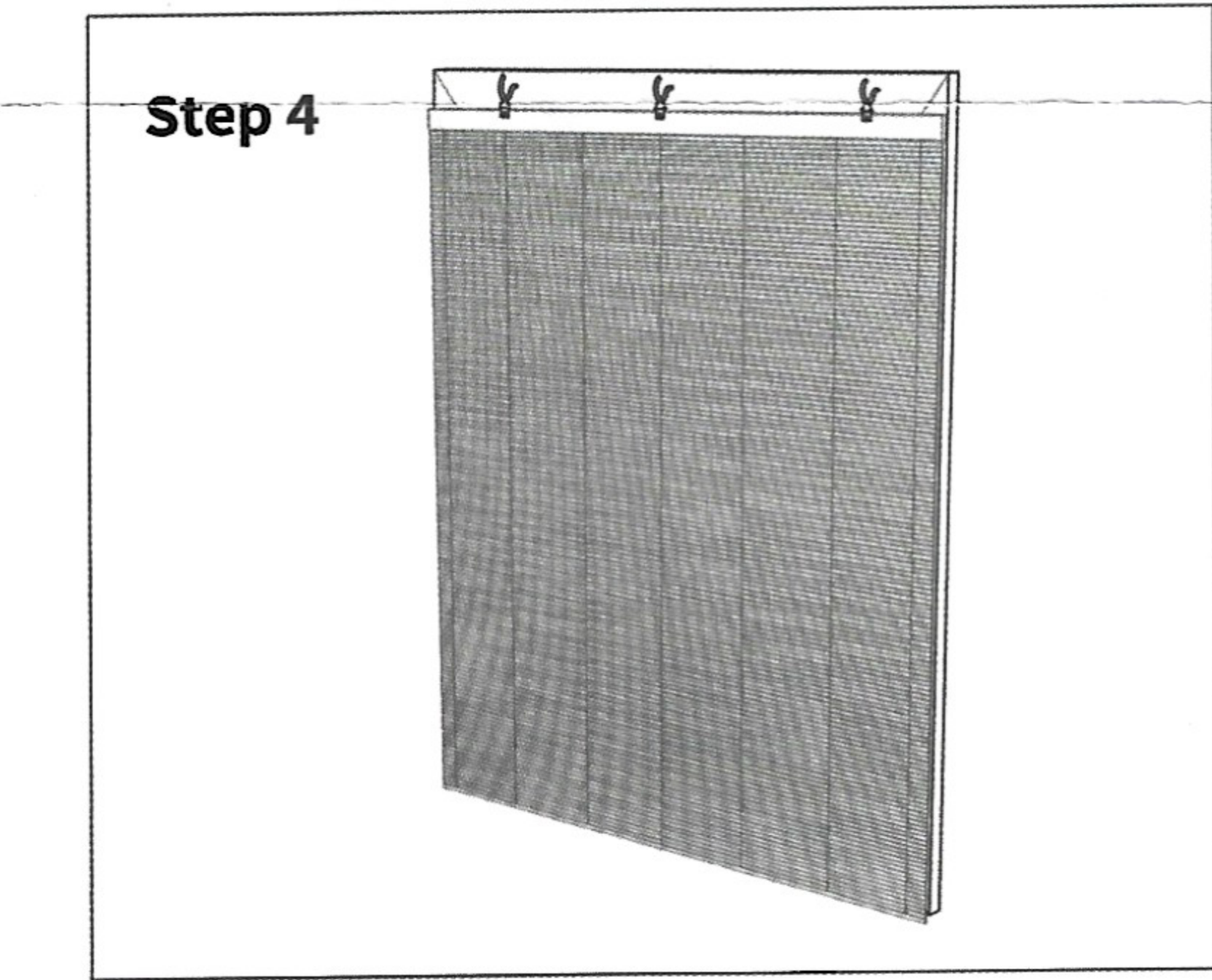


2.INSTALL EYE HOOKS

Drill 1/16” poilot holes at the X marks,insert eye hooks andtighten.If necessary,use pliers to tighten.

3.HANG THE SHADE

To hang the shade,simply hook the mounting eyelets over the eye hooks.



Attention: Toensure shade hangs level place the fasteners on the same slat row,use all included Fasteners

For assistance with installation or relacement parts
please contact customer support
Email: info@backyardxscapes.com
Phone:(877) 912-2244