

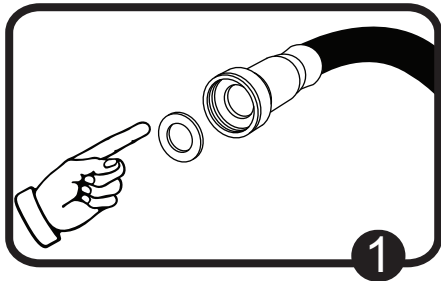
INSTRUCTIONAL GUIDES

THANKS FOR PURCHASING OUR HIGH DENSITY GARDEN HOSE

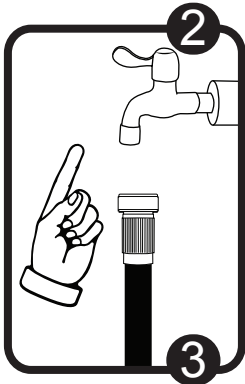
This Garden Hose has an ability to expand 3 times its original length when water is turned on and used through the hose, and when turned off after usage the hose retracts back to its original length.

Compared to ordinary hose which are of heavy bulky weight and cause extreme dirt when working with, our hose is light weighted which enhances ease and light usage without causing any dirt.

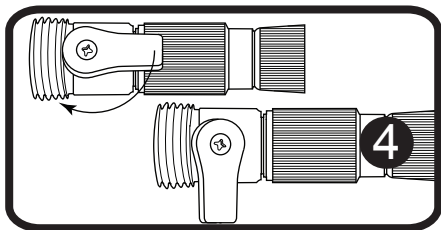
INSTRUCTIONAL GUIDES ABOUT THE HOSE BEFORE USAGE



1. Place the rubber washer firmly inside the female coupling to prevent water leakage before using the HOSE. At first usage, fill the Hose to expand it, then Gently stretch it free from its tightness in its outer bent covering material. After which, pour out the water from the Hose and use the hose normally.

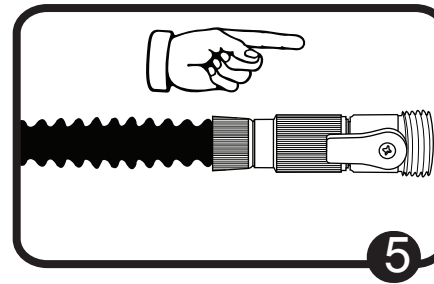


2. Into the source spigot, attach/connect the female end of the HOSE.

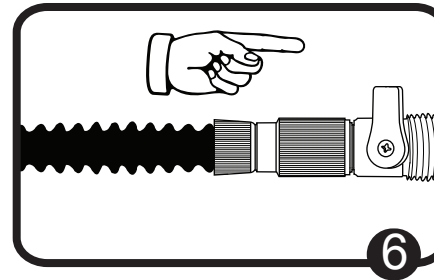


3. Connect the ON/OFF valve to the Male End of the HOSE.

4. Swerve the ON/OFF valve to its OFF position.



5. Turn on the water source, increase its pressure gradually while the hose manually expands three times its original length.



6. Once the HOSE is fully expanded, turn the ON/OFF valve on. Now you can use the hose freely.

7. Once done using the HOSE, Turn the water source off from the spigot.

8. To empty the water and dry up any water in the hose, turn on the ON/OFF valve. Leave it open in case of nozzle usage, after then, the water in the HOSE drains its self, the Hose manually shrinks to its normal length.

NOTE:

- The HOSE is meant for routine irrigation usage!
- Running hot water through the HOSE is prohibited.
- Always turn off the water source when not in use to relief the HOSE off water pressure.
- Drain the HOSE when not in use and keep in a dry, shadow place during summer period.
- Drain and Store the HOSE indoors to protect the HOSE from cold and water freezing in it, which could reduce its life span.

WARNING THE HOSE IS NOT A TOY

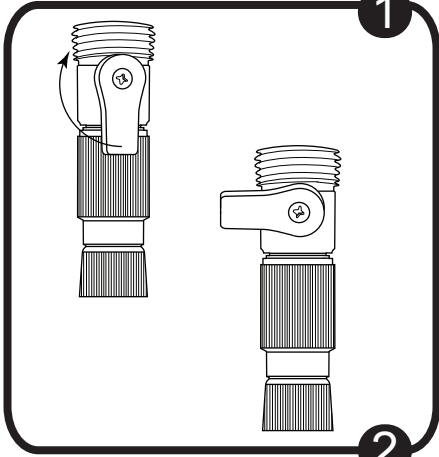
Do not stretch or expand this hose when empty. The hose is intended to expand only when the water is turned on. This hose can stretch to up to 3 times it original length and if it is stretched with no water and then accidentally released it can quickly snap back and could cause personal injury.

INSTRUCTIONAL GUIDES

READ THE FOLLOWING INSTRUCTIONS WRITTEN ON THE INVERSE PAGE BEFORE MAKING USE OF THE HOSE.

INSTRUCTIONAL GUIDES ON USING THE HOSE WITH A SPRINKLER.

1

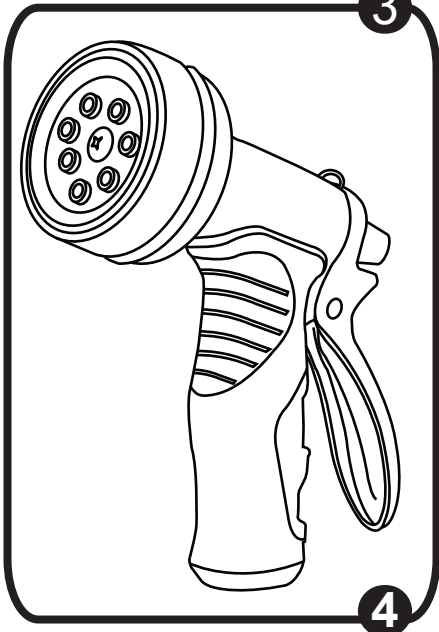


1. Firstly, turn the ON/OFF valve at the HOSE end OFF.

2

2. Turn on the water source. At first usage, the Hose expands in length, then gently stretch it free from its tightness in its outer bent covering material. After which, pour out the water from the HOSE and use the hose normally.

3

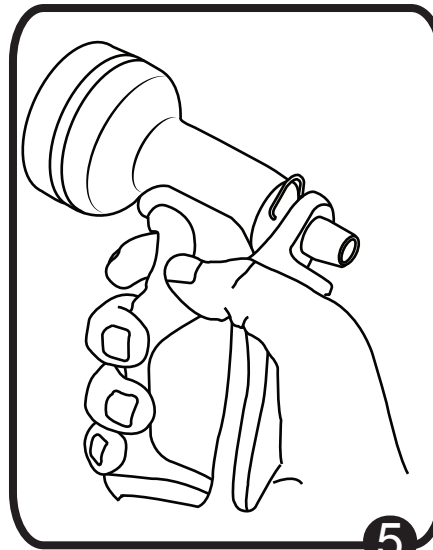


3. Connect the ON/OFF valve to the sprinkler.

4

4. Place the sprinkler in the garden or yard wherever you wish.

5



5. Lastly, Direct the sprinkler nozzle to wherever you wish to spray and away from your face, then turn the ON/OFF valve ON. Walk away. The sprinkler will work just as same as the ordinary HOSE works.

NOTE:

The sprinkler must be attached to the ground (in case of an oscillating sprinkler) when the water is turned OFF, to avoid the sprinkler been dragged, while the hose shrinks to its original length. This action would ensure the HOSE or sprinkler is not damaged.

IMPORTANT: The hose is intended for routine watering applications.

- Do not run hot water through the hose
- Do not leave the water turned on and the hose under pressure when not in use
- Drain your hose in the summer when you are not using it, and keep it shaded as much as possible
- Protect your hose from the harsh winter weather by storing it indoors. Be sure to drain the hose completely before storage as remaining water in the hose can freeze, damaging the hose.

The hose is not intended for drinking water use

Do NOT drink from this hose. The hose is a tool that is used and stored outdoors and can be exposed to conditions that can be harmful to humans such as:

- Mold & Bacteria
- Lawn and garden chemicals
- Animal waste
- Insects
- Stagnant water
- Other harmful substances