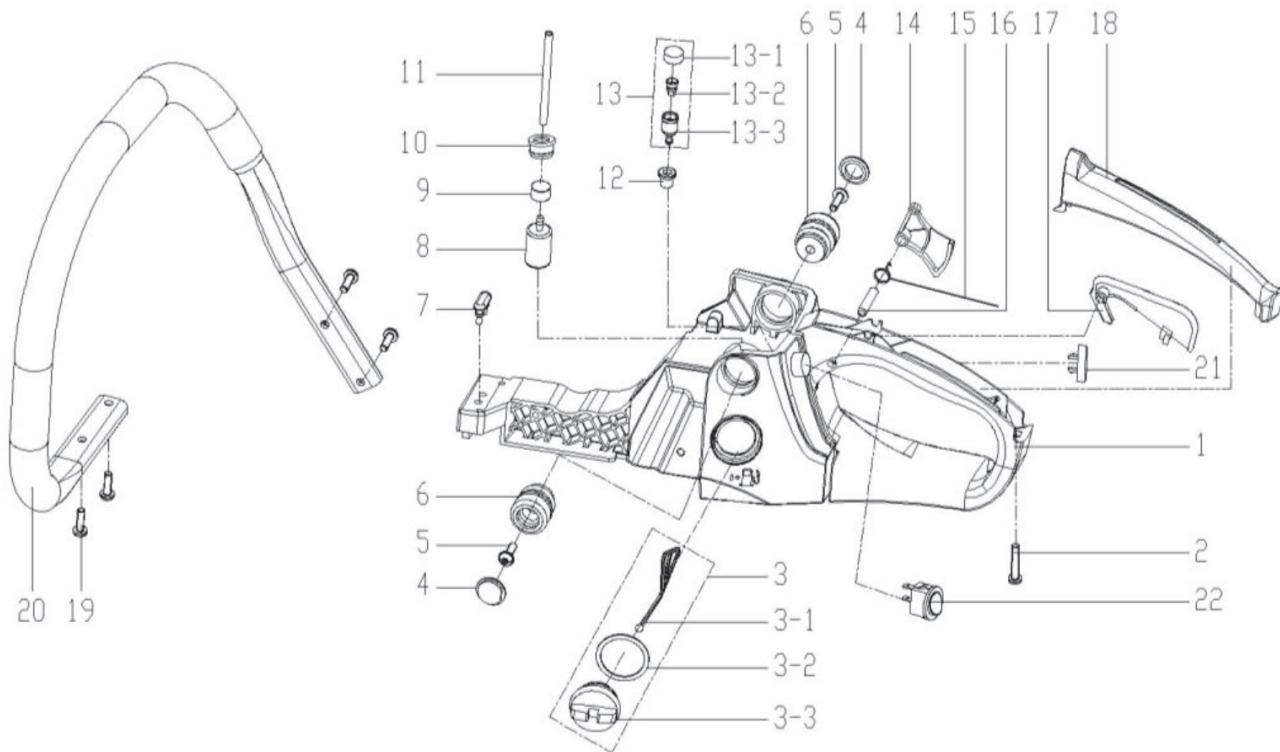


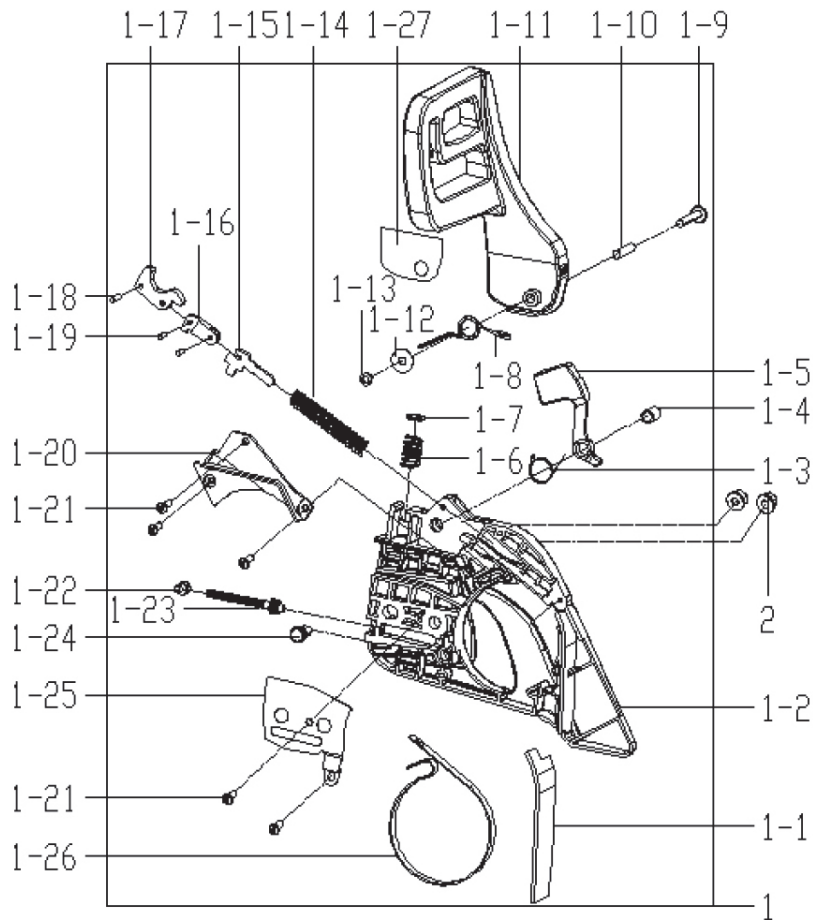
PARTS DIAGRAM

fuel tank assmby/ handle



No	Description	Qty	No	Description	Qty
A1	fuel tank	1	A10	fuel tube base	1
A2	screw ST4.2*19	1	A11	fuel tube	1
A3	fuel cap assembly	1	A12	balancer base	1
A3-1	fuel cap	1	A13	balancer assembly	1
A3-2	fuel cap "O" ring	1	A14	trigger	1
A3-3	safety guard	1	A15	trigger torsion rod spring	1
A4	dust-proof cover	2	A16	round pin 6*24	1
A5	screw M5*16	2	A17	trigger controller	1
A6	long anti-vibration seat	2	A18	rear handle cover	1
A7	fuel tank anti-vibration block	1	A19	screw	4
A8	fuel filter	1	A20	front handle	1
A9	loaded weight block	1	A21	primer	1
			A22	switch	1

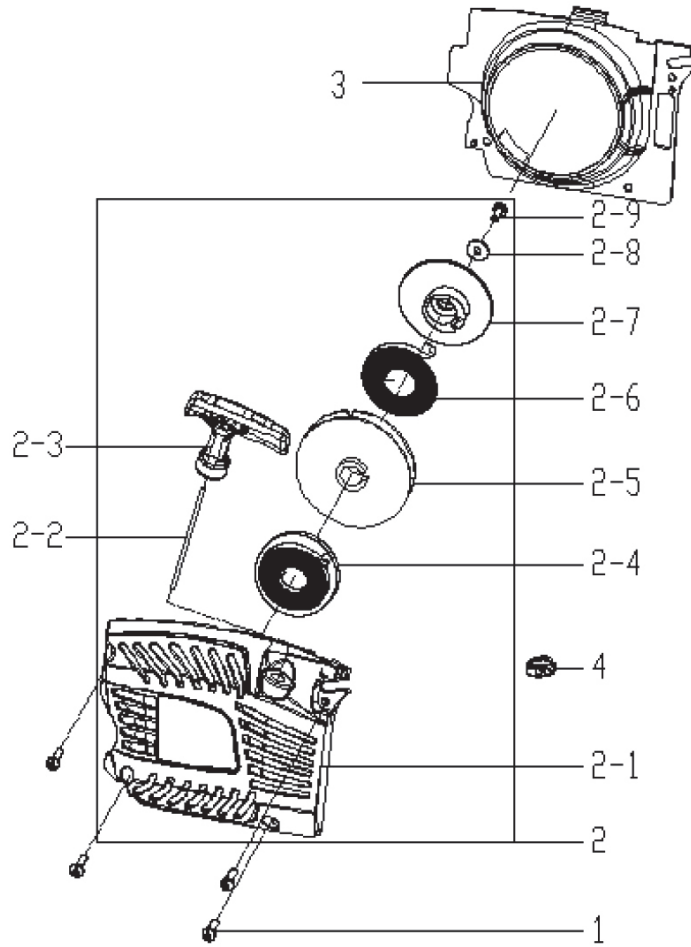
right side plate assembly



No	Description	Qty
B1	right side plate assembly	1
B1-1	dust plate	1
B1-2	right side plate	1
B1-3	heavy punch torsion spring	1
B1-4	heavy block tube	1
B1-5	heavy punch	1
B1-6	front guard pressure spring	1
B1-7	pressure spring seat	1
B1-8	front guard torsional spring	1
B1-9	screw M5*37.5	1
B1-10	bushing	1
B1-11	front guard	1
B1-12	flat washer 5*18*1	1
B1-13	nut M5	1
B1-14	brake spring	1

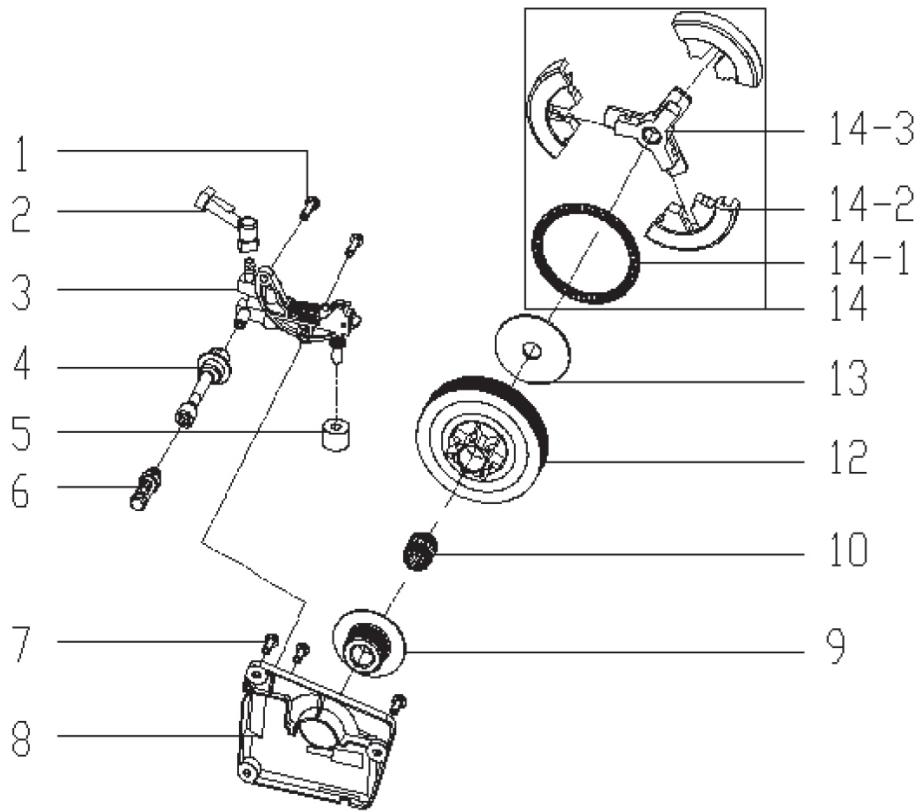
No	Description	Qty
B1-15	brake lever	1
B1-16	secondary pull-rod	1
B1-17	main pull-rod	1
B1-18	round pin 3*14	1
B1-19	round pin 3*9	2
B1-20	brake spring	1
B1-21	screw ST4.2*9.5	5
B1-22	tensioning block	1
B1-23	tensioning screw	1
B1-24	tensioning gear	1
B1-25	tensioner cover	1
B1-26	brake ribbon	1
B1-27	aluminium-foil paper	1
B2	nut M8	2

starter assembly



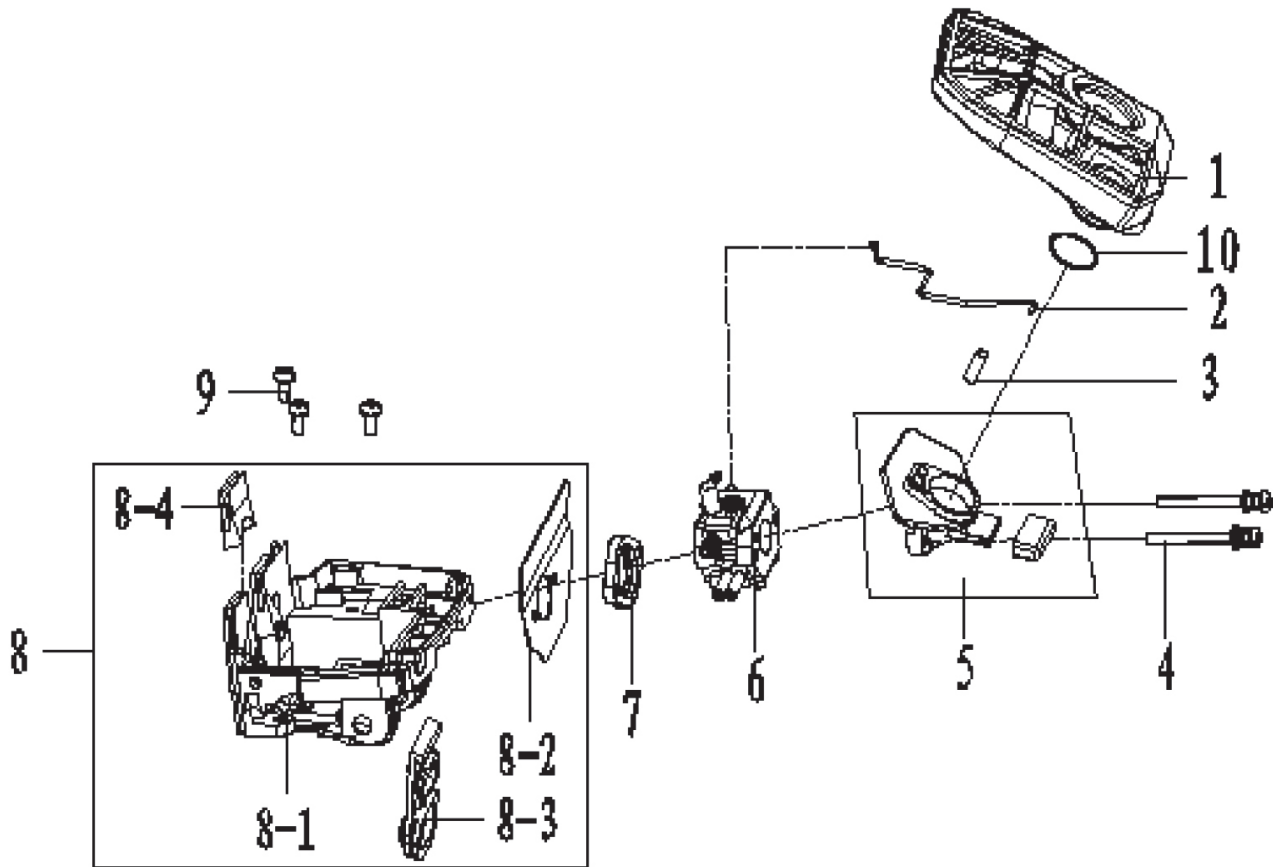
No	Description	Qty
C1	screw M5*16	4
C2	starter assembly	1
C2-1	easy starter cover	1
C2-2	starter rope	1
C2-3	starter handle	1
C2-4	easy starter main coil spring	1
C2-5	reel	1
C2-6	easy starter assistant coil spring	1
C2-7	starter wheel	1
C2-8	flat washer	1
C2-9	screw ST4.8*13	1
C3	cooling-air mask	1
C4	LH protective cover	1

oil pump



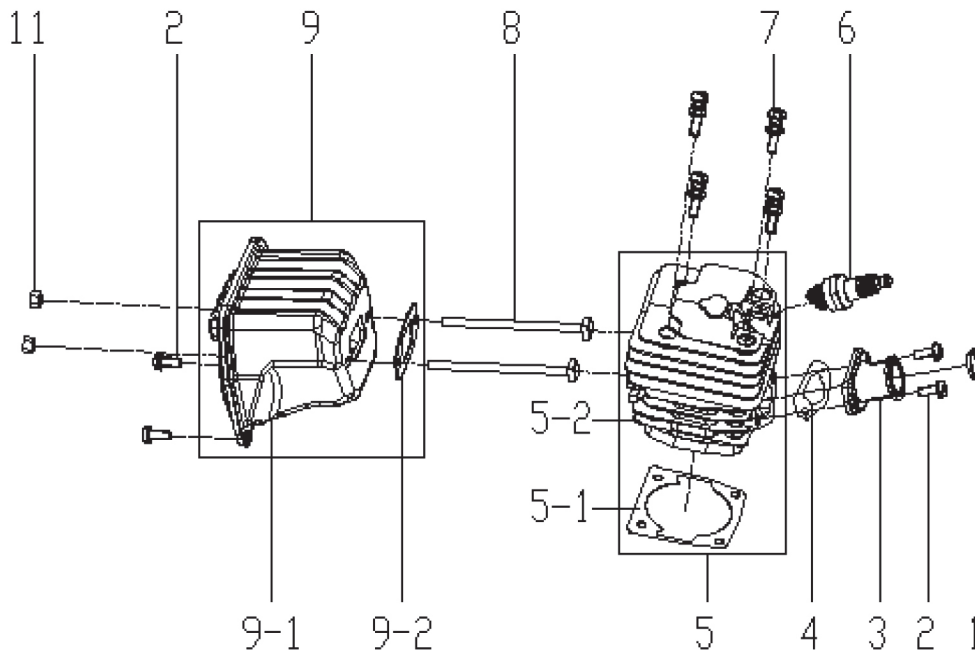
No	Description	Qty
D1	screw M4*14	2
D2	oil nozzle	1
D3	oil pump	1
D4	sponge filter	1
D5	oil tube	1
D6	oil filter	1
D7	screw M4*10	3
D8	oil pump cover plate	1
D9	worm wheel	1
D10	needle bearing 12*15*14.5	1
D12	cluth housing	1
D13	cluth washer	1
D14	cluth assembly	1

carburetor/air filter assembly



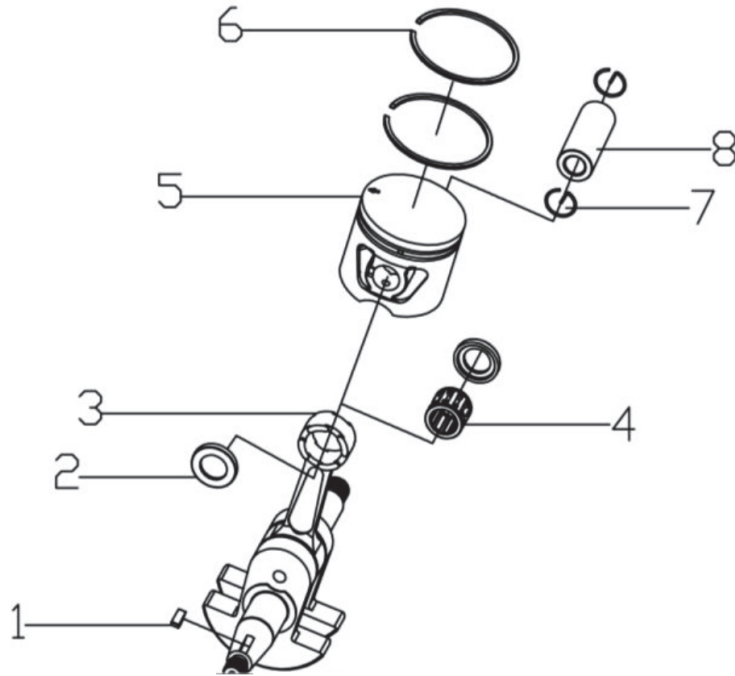
No	Description	Qty
E1	air filter	1
E2	throttle push rod	1
E3	double-end bolt M5X39	1
E4	screw M5*52	2
E5	air intake	1
E6	carburetor	1
E7	inlet flange	1
E8	hot start rear seat assembly	1
E8-1	hot start rear seat	1
E8-2	inlet pipe bracket gasket	1
E8-3	dust guard	1
E8-4	heat insulation board	1
E9	screw M5*12	3
E10	air filter seal "o" ring	1

cylinder/ muffler assembly



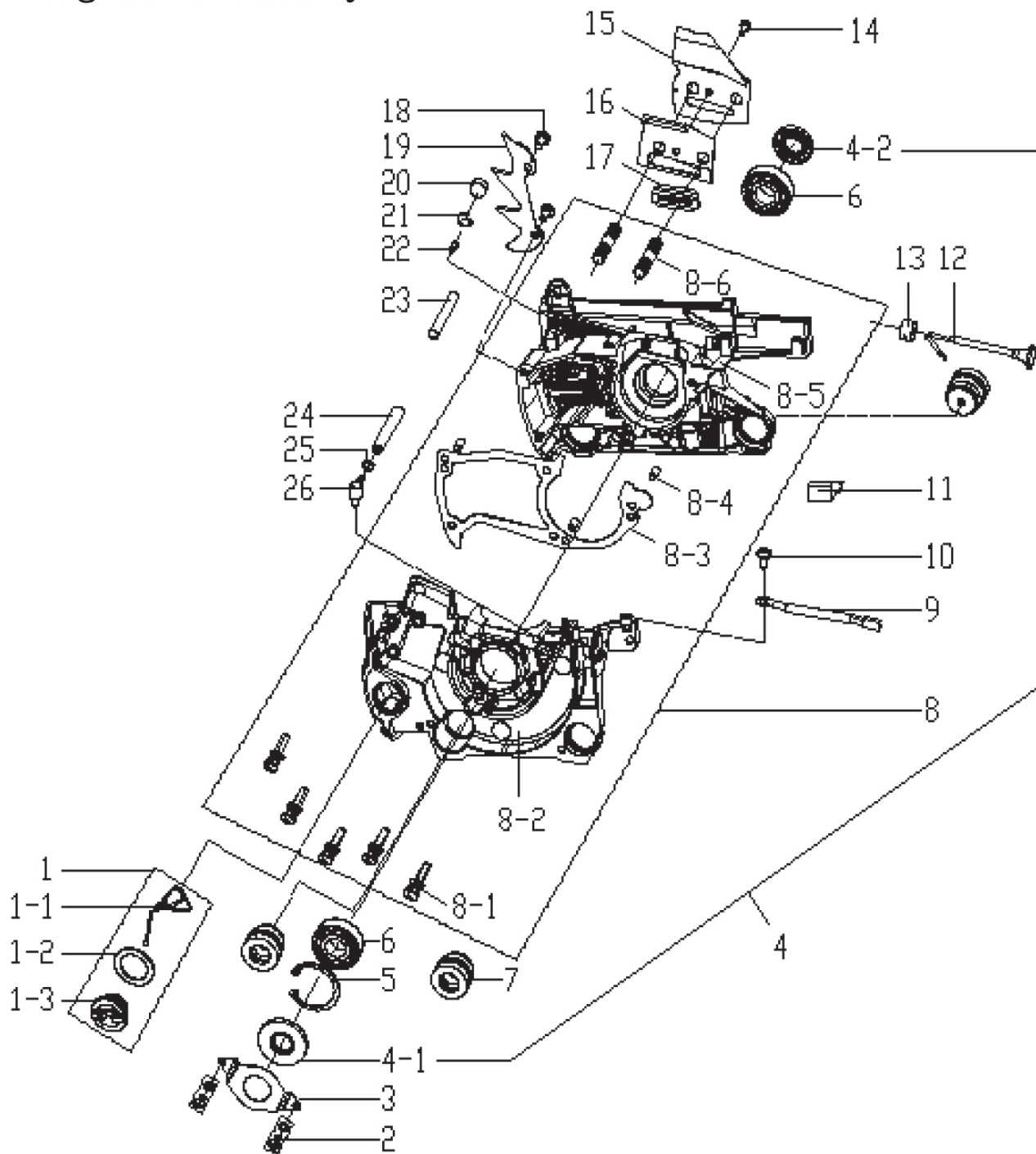
No	Description	Qty
F1	retaining ring	1
F2	screw M5*12	4
F3	intake tube	1
F5	cylinder assembly	1
F5-1	cylinder sealing gasket	1
F5-2	cylinder	1
F6	spark plug	1
F7	screw M5*20	4
F8	bolt M5*84	2
F9	muffler assembly	1
F9-1	muffler sealing gasket	1
F9-2	muffler	1
F10	muffler cover	1
F11	nut M5	2

crankshaft connecting rod assembly/piston assembly



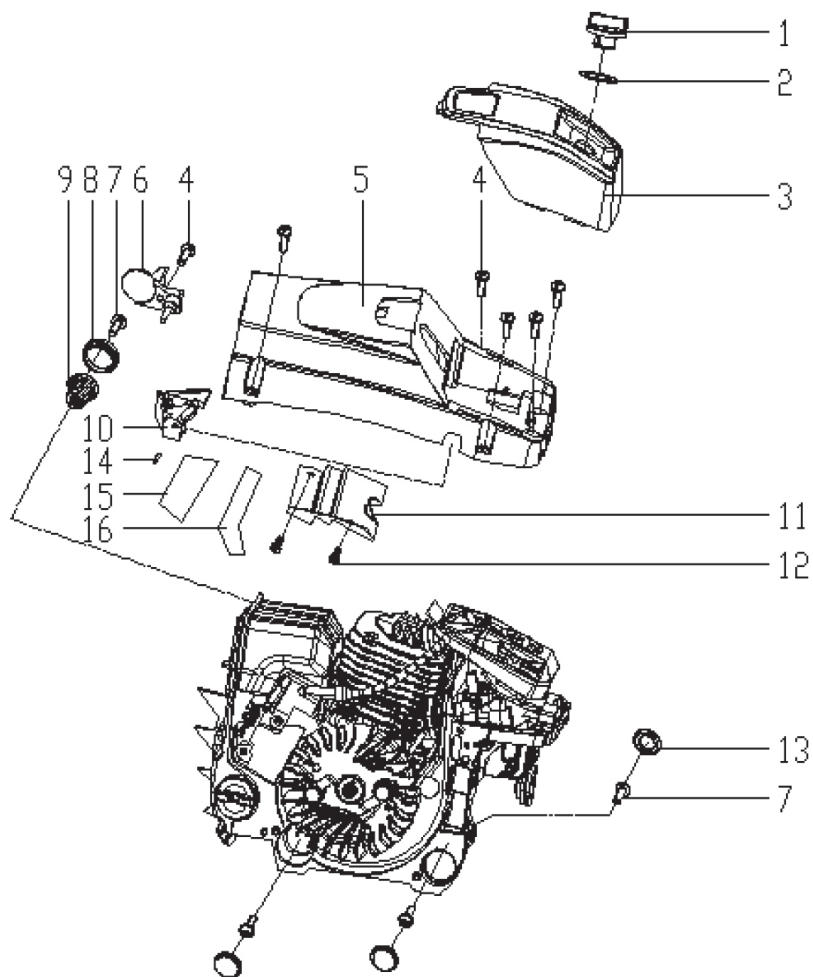
No	Description	Qty
G1	semicircular key M2.9*3	1
G2	needle bearing retainer	2
G3	crankshaft-connecting rod assembly	1
G4	needle bearing 11*15*12.5	1
G5	piston	1
G6	piston ring	2
G7	piston pin circlip	2
G8	piston pin	1

engine assembly



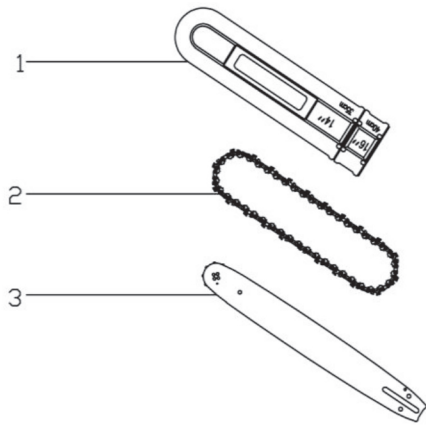
No	Description	Qty
J1	oil cap assembly	1
J1-1	oil cap	1
J1-2	oil cap "O" ring	1
J1-3	safety guard	1
J2	screw M4*8	2
J3	pressing plate	1
J4	oil seal assembly	1
J4-1	oil seal 15*35*5	1
J4-2	oil seal 15*28*5	1
J5	internal circlip	1
J6	deep groove ball bearing	2
J7	short shock-absorbing seat	3
J8	crankcase assembly	1
J8-1	screw M5*30	5
J8-2	left crankcase	1
J8-3	crankcase sealing gasket	1
J8-4	round pin 5*10	3
J8-5	right crankcase	1
J8-6	double-end bolt M8*40	2
J9	ground wire	1
J10	screw M5*16	1
J11	damping rubber block	1
J12	choker rod	1
J13	choker rod seat	1
J14	screw M4*10	1
J15	baffle	1
J16	baffle gasket	1
J17	guide block	1
J18	screw M5*12	2
J19	spiked bumper	1
J20	sponge filter	1
J21	circlip of sponge filter	1
J22	ventilation for crankcase	1
J23	insulating sleeve	1
J24	negative pressure hose	1
J25	circlip of negative pressure hose	1
J26	negative pressure nozzle	1

upper cover/air filter cover



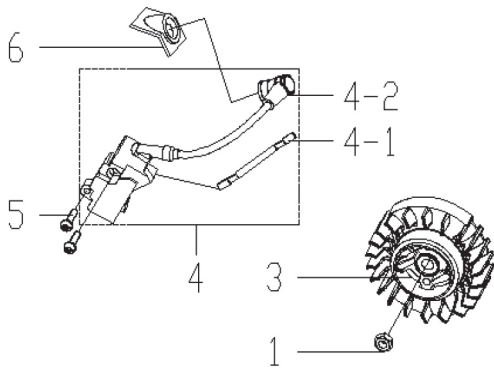
No	Description	Qty
K1	air filter lock nut	1
K2	lock nut gasket	1
K3	air filter cover	1
K4	screw M5*16	6
K5	upper cover	1
K6	guard plate	1
K7	screw ST4.8*16	4
K8	conical spring seat	1
K9	conical spring	1
K10	idle speed regulating guide bush	1
K11	air duct optimization plate	1
K12	screw ST4.2*8	2
K13	dust cover	3
K14	aluminium-foil paper 1	1
K15	aluminium-foil paper 2	1
K16	carburetor T needle plug	1

bar cover/chain/bar



No	Description	Qty
L1	bar cover	1
L2	chain	1
L3	bar	1

flywheel/ignition assembly



No	Description	Qty
H1	nut M8	1
H3	flywheel assembly	1
H4	ignition coil assembly	1
H5	screw M5*20	2
H6	ignition coil protective sleeve	1