



JOHN DEERE

USE AND CARE

Broadcast Spreader
LPBS36JD



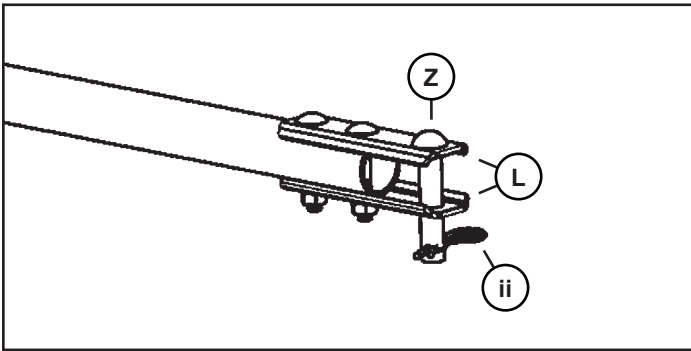
Read the general safety operating precautions in your machine operator's manual for additional safety information.

Use and Care

Read the general safety operating precautions in your machine operator's manual for additional safety information.

Installing

1. Park machine safely.
See "Parking Safely" in Safety section.



2. Remove small closed-style spring locking pin (ii) and hitch pin (Z) from hitch clevis (L) of spreader.
3. Pull spreader forward and position hitch clevis to straddle machine rear hitch plate or drawbar (not shown). Align all hitch pin holes, then install hitch pin down through hitch clevis and machine hitch, securing with small closed-style spring locking pin.

Storing

The spreader can be tipped upright and stored against a wall using less space:

1. Remove any loose material from hopper and fan using a brush and garden hose. The spreader should be clean and dry before storing.
2. Roll spreader to desired storage area, lift hitch clevis to pivot spreader to vertical position.

Removing

1. Park machine safely.
See "Parking Safely" in the Safety section.
2. Remove all materials from the hopper before removing spreader from machine.



CAUTION: Avoid injury! Keep hands, feet and other body parts away from under drawbar.

3. Remove small closed-style spring locking pin from hitch pin.
4. Hold spreader tow tube to remove pressure from hitch pin, then remove the hitch pin from hitch clevis and rear hitch plate or drawbar on machine.
5. Pull or push spreader backward to disengage hitch clevis from machine hitch, install hitch pin in hitch clevis for storage and secure with small closed-style spring locking pin .

Parking Safely

1. Stop vehicle on a level surface, not on a slope.
2. Lock park brake.
3. Stop engine.
4. Before you leave the operator's seat, wait for engine and all moving parts to stop.

Use and Care

Read the general safety operating precautions in your machine operator’s manual for additional safety information.

Daily Checklist

- ☐ Check for loose or missing hardware.
- ☐ Make sure all connections are tight.
- ☐ Make sure attachment responds properly to controls.
- ☐ Check for debris build-up that could obstruct proper motion of the spreader control components.
- ☐ Check to make sure tires on composite (plastic) rims are inflated to 30 psi (2.1 bar) (207 kPa), or tires on metal rims are inflated to 20 psi (1.3 bar) (138 kPa) maximum.

Operating Tips

- Always operate your spreader with the speed limit for which it was designed - 3 mph.
- When backing, carefully back straight to avoid jack knifing, which could result in damage to equipment.
- Only tow your spreader behind vehicles for which it was designed - riders, and lawn and garden tractors.
- Do not load the hopper with more than the maximum weight capacity of 79 kg (175 lb).
- Break up any lumps as you fill the hopper.
- Do not use on windy days, especially when spreading fine grass seed or herbicides.
- Optimum hitch height is 18 - 23 cm (7- 9 in.).
- The flow control handle should have resistance to movement. Increase or decrease spring tension as required to get desired flow control handle resistance.

Operating the Spreader

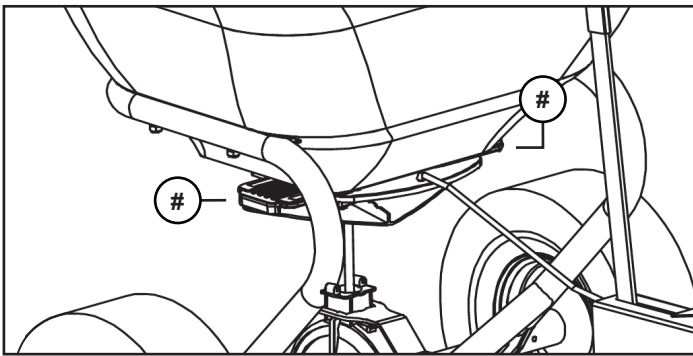
The Fan Speed and the Spread Width	Controlled by the speed of the vehicle. The recommended operating speed is slightly faster than that of a brisk walk, 3 mph. 3 mph is equal to the vehicle traveling 40 ft in nine seconds.
Flow Control Assembly	Operates the flow control plate. The flow control assembly is marked 0 (closest) to 10 (fully open). The position selected determine the amount of material to be broadcast. The higher the number, the heavier the application of material.
Flow Control Setting	For many of the common fertilizers, insecticides, and grass seeds are provided in the alphabetized table listing flow control settings. If the product is not listed in the flow control settings table, use the calibration guide to set the flow control.
The Agitator Spring	Located inside the hopper. Provides consistent material flow of pelletized materials and seed. It is not designed to break up lumps of material or seed. Break up any lumps as you fill the hopper.
The Correct Setting Number	After determining the correct setting number for your material, loosen knob and move stop bracket to that position. Tighten knob. Move flow control handle to the lock position to open the flow control plate.

Use and Care

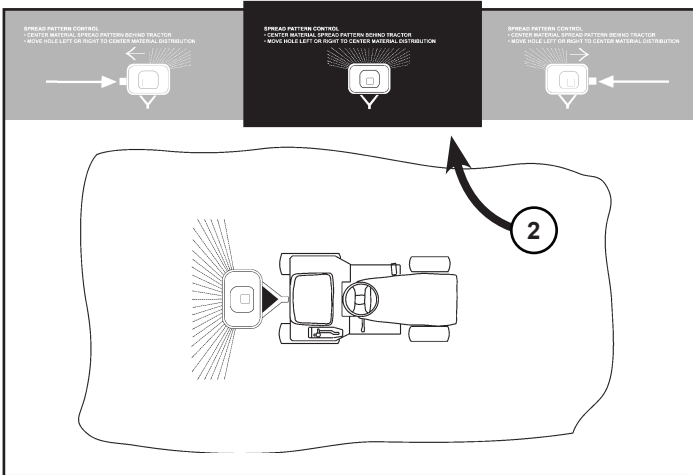
Directional Control

Normal Operation (Uniform Spreading)

Fertilizers, insecticides, and grass seed each have different particle size and weight. This can be referred to as particle density. As the particles are impacted by the fan, the distribution can be centered or slightly off center depending on particle density and forward vehicle speed.



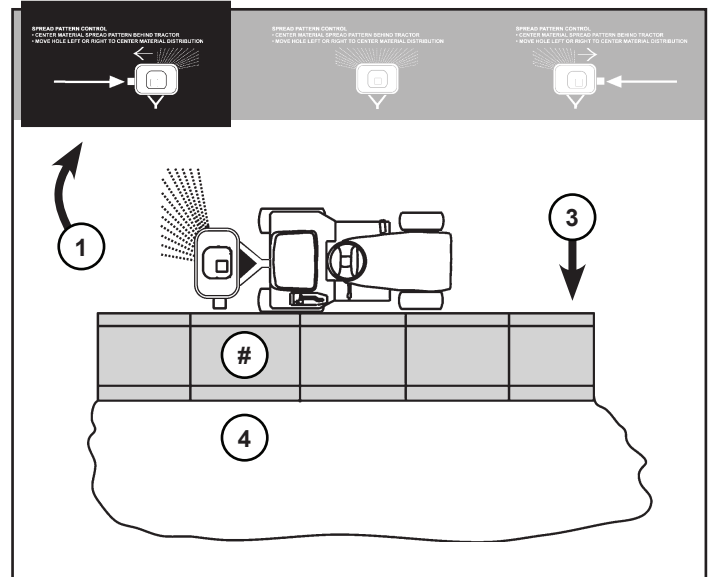
Adjustment can be made by moving the direction control plate (#) to the right or left.



The directional decal located below the directional control plate will aid you in adjusting the spread pattern. For most applications the plate should be placed close to the center position (2) described by the label above. If the material is coming out right or left during operation, adjustment of this plate should be made to center the material distribution pattern behind the vehicle. Your broadcast spreader has a patented feature to allow you to adjust for centering.

One Side Only Spreading

The directional control plate can be used for adjusting the material spread pattern when spreading near sidewalks (#), planting beds (4), etc. With the plate adjusted to the left side (1), the directional control plate only operates with 90% shut-off of material to the right side (3) of the vehicle as shown in the illustration below.



Maintenance Tips

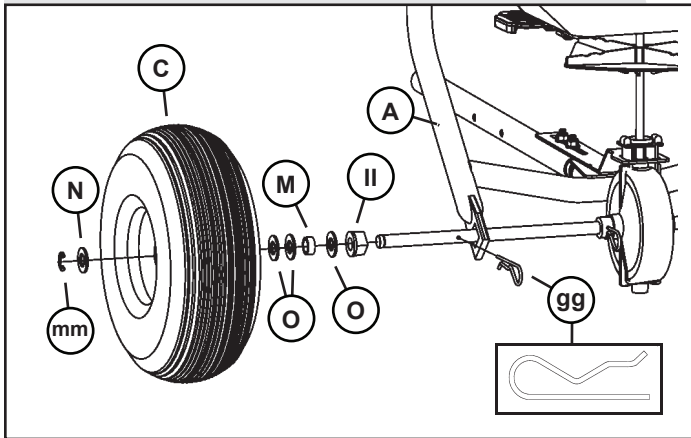
- The key to years of trouble-free service is to keep your spreader clean and dry.
- Never allow material to remain in hopper for extended periods of time.
- Should rust develop, sand lightly and then paint area with enamel.
- Periodically check all fasteners for tightness.
- Rinse / dry inside and outside of spreader after each use. Move flow control as you rinse, to avoid build up of material.

Use and Care

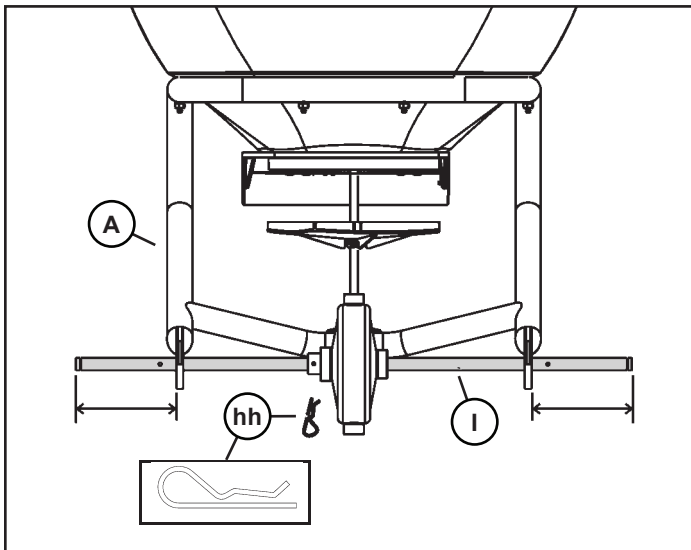
Annual Maintenance

NOTE: There are two different rims of wheels that unit can be shipped with: metal or composite (plastic) wheel rims. Determine wheel rim type and follow appropriate steps below.

Remove Composite (Plastic) Wheel Rims



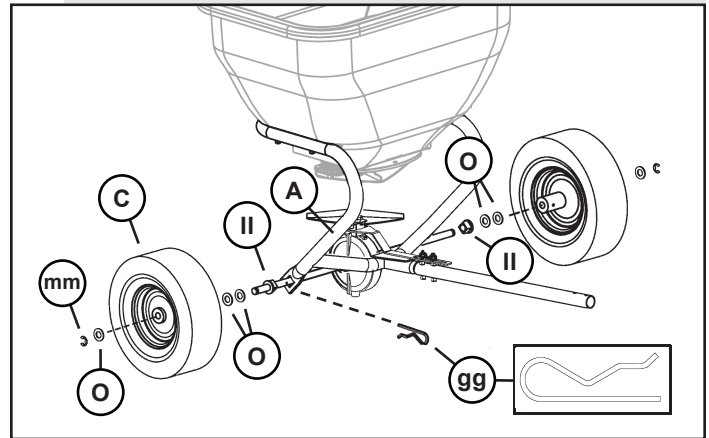
1. Remove snap ring (**mm**), 5/8 in. flat washer (**N**), wheel (**C**), two 5/8 in. flat washers (**O**) (if installed), spacer (**M**), 5/8 in. flat washer (**O**), and axle bearing (**II**). Remove open-style spring locking pin (**gg**).
2. Remove large closed-style spring locking pin (**hh**), and slide axle (**I**) out from support frame (**A**). Remove axle bearing, two 5/8 in. flat washers (if installed), spacer, 5/8 in. flat washer, and axle bearing on opposite side of axle.
3. Clean parts.



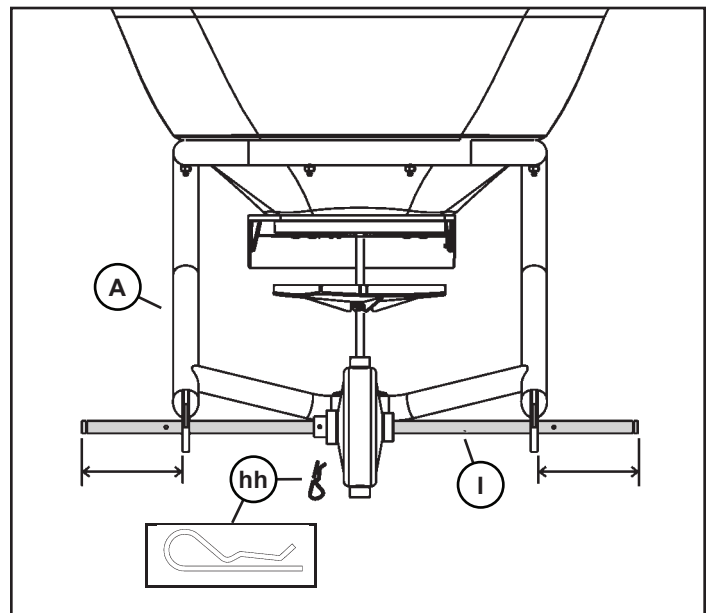
Picture Note: View from rear of spreader.

OR

Remove Metal Wheel Rims



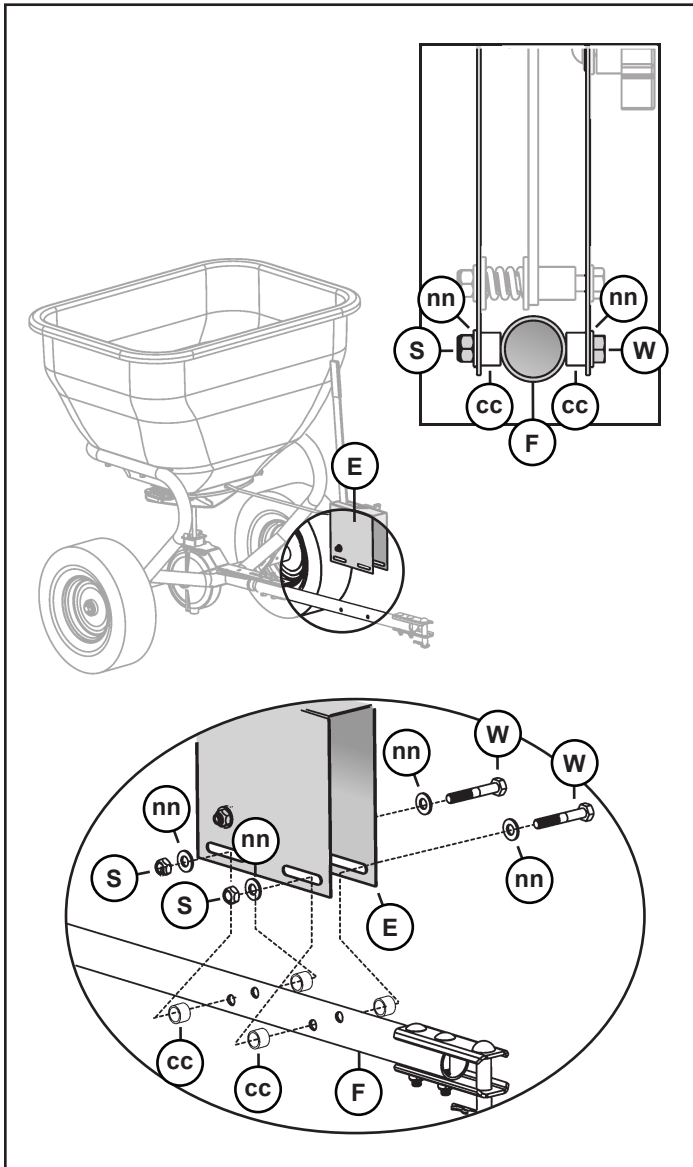
1. Remove snap ring (**mm**), 5/8 in. flat washer (**O**), wheel (**C**), washers (**O**) (if installed), and axle bearing (**II**). Remove open-style spring locking pin (**gg**).
2. Remove large closed-style spring locking pin (**hh**), and slide axle (**I**) out from support frame (**A**). Remove axle bearing (**II**) and washers (**O**) (if installed) on axle.
3. Clean parts.



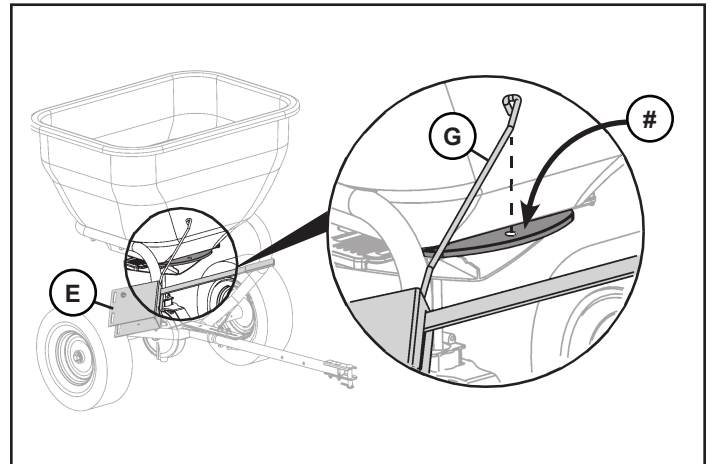
Picture Note: View from rear of spreader.

Use and Care

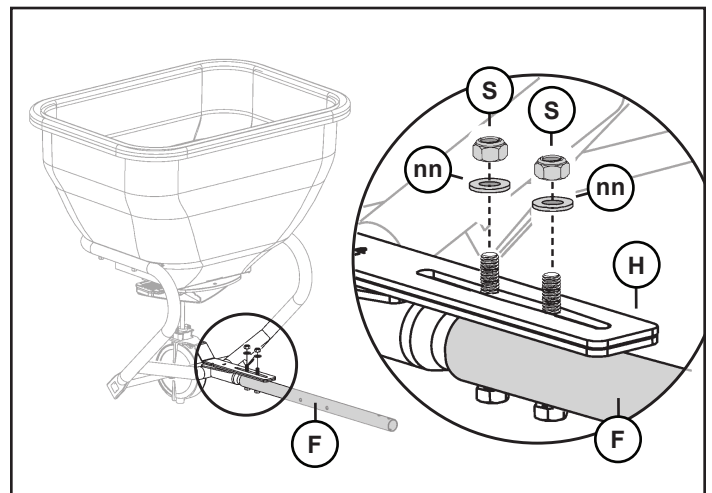
Remove Gage Plate and Remaining Components



1. Remove two 5/16 x 2-3/4 in. bolts (**W**), four 5/16 in. flat washers (**nn**), four pivot bushings (**cc**), and two 5/16 in. nylon locknuts (**S**). Remove assembled gage plate (**E**) from tow tube (**F**).



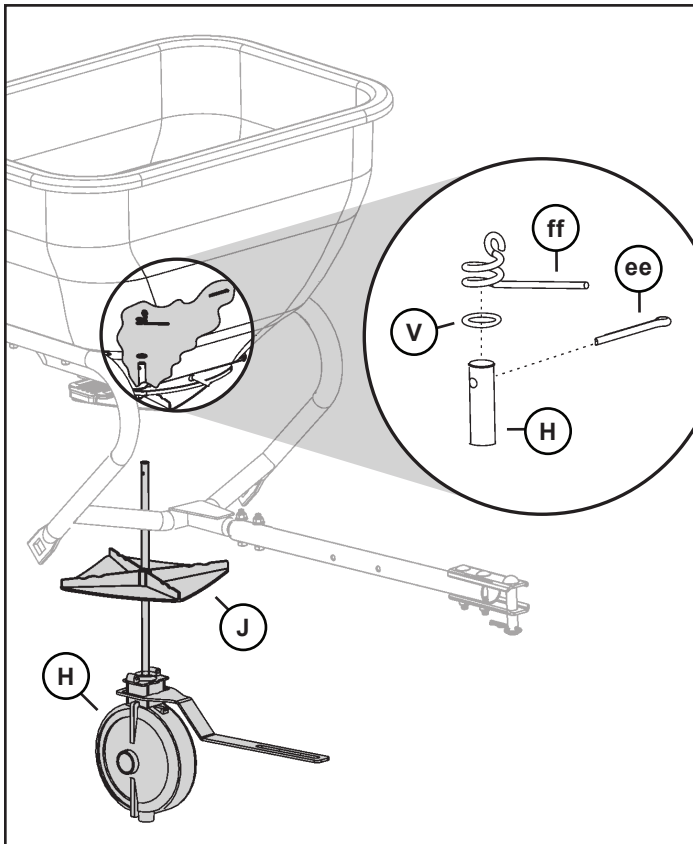
2. Rotate assembled gage plate (**E**) approximately 90° clockwise, and remove formed end of the of the link rod (**G**) from hole (**#**) on the hopper control plate, as shown.



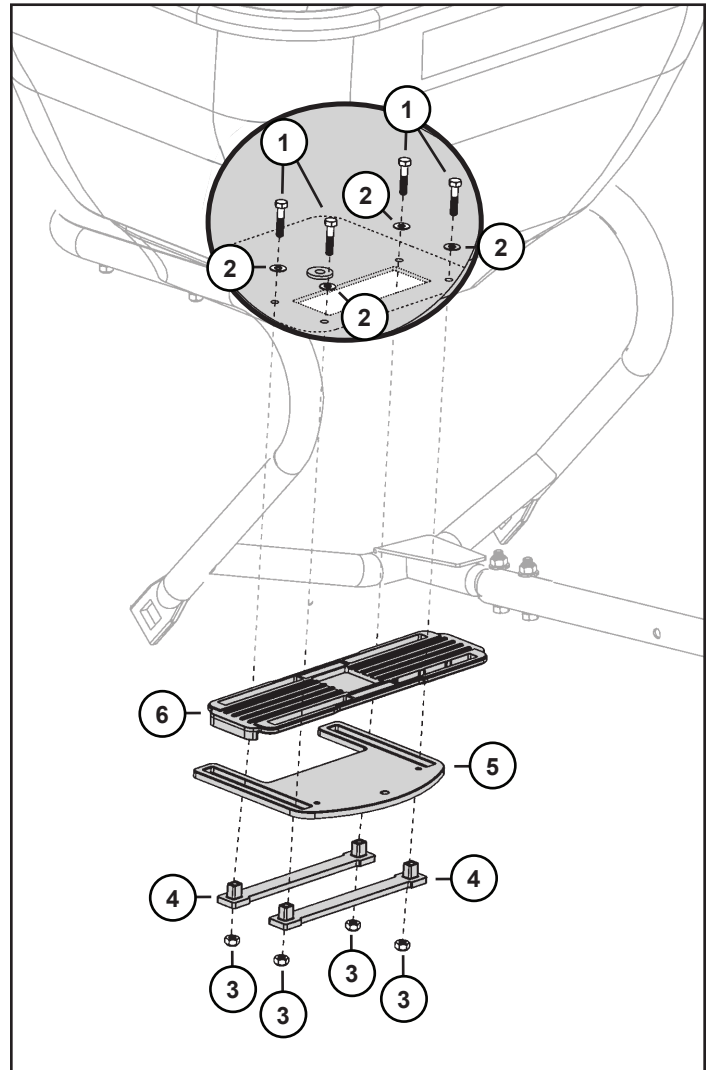
3. Remove the transmission bracket (**H**) from tow tube (**F**) by removing the two 5/16 in. nylon locknuts (**S**) and two 5/16 in. flat washers (**nn**).

Use and Care

Remove Gage Plate and Remaining Components



4. Remove 1/8 x 1 in. cotter pin (**ee**), 3/8 in. ID O-ring (**V**), and agitator (**ff**) from transmission shaft (**H**).
5. Remove transmission (**H**) assembly.
6. Clean fan (**J**).



7. Remove the four bolts (**1**), washers (**2**), nuts (**3**) and straps (**4**) that hold the gate (**5**) and directional control plate (**6**).
8. Separate parts as shown.
9. Clean thoroughly using soap and water.
NOTE: Be sure to calibrate the gage plate before using spreader (see "Calibrate Gage Plate" in the Assembly section).
10. Assemble parts reverse order of removal.

Use and Care

Troubleshooting

If you are experiencing a problem that is not listed in this chart, see your authorized dealer for service.

When you have checked all the possible causes listed and you are still experiencing the problem, see your authorized dealer.

IF	CHECK
Not enough or too much fertilizer dispensed.	Calibrate the gage plate.
Flow control handle hard or will not operate.	Flow control handle hardware too tight: Loosen 5/16 x 2-3/4 in. bolt on flow control handle assembly. Take gate and directional control plates apart; clean plates out with soap and water.
Material is clogged	Turn off engine, set parking brake, fully open gate, shake hopper until material flows, close gate.
Fan does not turn when pulling.	Find or replace missing open-style spring locking pin on right wheel rim. Find or replace missing large closed-style spring locking pin in transmission. Check position of fan and fan driver. Check for transmission malfunction: With the broadcast spreader attached to your machine, lift the drive wheel and rotate. At the same time apply gentle pressure to the fan shaft. It should turn with each rotation of the wheel.

Specifications

LPBS36JD Broadcast Spreader

DIMENSIONS

Size (*maximum weight*) 79 kg (175 lb)

Capacity 0.10 cu m (3.5 cu ft)

Empty Mass 18.1 kg (40 lbs)

Maximum Tongue Weight . . . 17.2 kg (38 lbs)

WHEELS AND TIRES

Tire Size 33.0 x 10.2 cm (13 x 5 in)

Turf tread

TIRE INFLATION

Composite 207 kPa (2.1 bar)

(Plastic) Rim (30 PSI)

Tire Inflation 138 kPa (1.3 bar)

(Metal) Rim (20 PSI)

(Specifications and design subject to change without notice).

Use and Care

Flow Control Settings for Specific Products

CAUTION: Avoid injury! Chemicals can be dangerous. Avoid injury to operator or bystanders:



- Read chemical container label for handling instructions. A Material Safety Data Sheet (MSDS) should be supplied by the chemical dealer and provides proper safety information.
- Wear proper clothing and safety equipment while handling or applying chemicals.
- Prohibit all smoking, drinking, and eating around chemicals.

The following is a list of flow control settings for specific products available for use with the spreader. Some products may not be available in all areas. *NOTE: Flow control settings are based on 3 mph forward speed.*

lbs / 1000 square feet	Flow Control Setting at 3 mph ^a	Materials ^b	lbs / 1000 square feet	Flow Control Setting at 3 mph ^a	Materials ^b
10	3	All American All Purpose Fertilizer 10-10-10	3	2	Eliminator Ant, Flea, and Tick Killer Granules
3.8	2.5	Bayer Season Long Grub Control	2.5	1.5	Eliminator Ant, Flea, and Tick Killer Granules
2.9	2	Bayer Season Long Grub Control	2	1.5	2 1.5 Eliminator Ant, Flea, and Tick Killer Granules
3	2	Bayer Complete Insect Killer	2	2	2 2 Eliminator 5% Diazinon Killer Granules
2	1.5	Bayer Complete Insect Killer	7	2.5	Howard Johnsons All-Purpose Fertilizer 8-8-8
3	1.5	Bayer Power Force Multi-Insect Killer	7	2.5	Howard Johnsons All-Purpose Fertilizer 10-10-10
2	1	Bayer Power Force Multi-Insect Killer	7	2.5	Howard Johnsons All-Purpose Fertilizer 12-12-12
3	1.5	Bayer Grub Control	5	2	Ironite 1-0-0
2	1.5	Bayer Grub Control	4	2	Klay Soft Pelletized Gypsum Soil Conditioner
3.2	2	Bayer Lawn Fertilizer Plus Weed Control II 30-3-4	3	1.5	Klay Soft Pelletized Gypsum Soil Conditioner
3.8	2	Bayer Season Long Grub Control	2	1.5	Klay Soft Pelletized Gypsum Soil Conditioner
2.9	1.5	Bayer Season Long Grub Control			
3.6	2	Bayer Lawn Starter Fertilizer 20-27-5			
3.2	2	Bayer Lawn Fertilizer Plus Crabgrass Preventer 30-3-4			

a. Flow Control Settings are based on 3 mph forward speed.

b. The products listed are the property of their respective owners, and are not the property of, nor recommended by, Deere and Company.

Use and Care

Flow Control Settings for Specific Products

lbs / 1000 square feet	Flow Control Setting at 3 mph ^a	Materials ^b
---------------------------------	--	------------------------

4	2	Lesco Pre-M 0.86% Plus Fertilizer 25-0-7
4.2	2	Lesco Starter Fertilizer 18-24-12
4.2	2	Lesco Turf Fertilizer 24-2-11
4	2	Lesco Weed and Feed
8	3.5	Master Turf Ultimate Tall Fescue Blend
4	2.5	Master Turf Ultimate Tall Fescue Blend
8	3.5	Milorganite 6-2-0
16	5	Milorganite 6-2-0
3.2	2	Miracle-Gro Lawn Fertilizer Plus Weed Control 28-3-3
3.6	2	Miracle-Gro Starter Lawn Fertilizer 20-27-5
3.1	1.5	Miracle-Gro Starter Lawn Fertilizer 29-3-4
9.6	3	Ortho Lawn Insect Killer Granules
4.8	2	Ortho Lawn Insect Killer Granules
2.4	1	Ortho Lawn Insect Killer Granules
1.2	1	Ortho Lawn Insect Killer Granules
4	2	Ortho Max Insect Killer for Lawns
2	1.5	Ortho Max Insect Killer for Lawns
1	1	Ortho Max Insect Killer for Lawns
10	3	Parkers Super Soilife Lawn and Garden Fertilizer 10-10-10
6.5	2	Parkers Super Soilife Lawn and Garden Fertilizer 16-4-8
3.6	2	Pennington Lawn Starter Fertilizer 18-24-6

lbs / 1000 square feet	Flow Control Setting at 3 mph ^a	Materials ^b
---------------------------------	--	------------------------

10	4	Pennington Master Turf High Traffic Lawn Seed Mixture
5	3	Pennington Master Turf High Traffic Lawn Seed Mixture
8	4	Pennington Master Turf Shady Lawn Seed Mixture
4	3	Pennington Master Turf Shady Lawn Seed Mixture
10	4	Pennington Master Turf Sun and Shade Lawn Seed Mixture
5	3	Pennington Master Turf Sun and Shade Lawn Seed Mixture
2	1.5	Real-Kill Multi-Purpose Lawn and Garden Insect Killer
2.5	1.5	Real-Kill Multi-Purpose Lawn and Garden Insect Killer
10	4	Rebels Supreme Blend Grass Seed for Sun and Shade
5	3	Rebels Supreme Blend Grass Seed for Sun and Shade
10	4	Ringer Lawn Restore 10-2-6
12.3	4.5	Sam's Choice Crabgrass Preventer 30-3-4
8.1	3	Sam's Choice Crabgrass Preventer 30-3-4
6	3	Sam's Choice Crabgrass Preventer 30-3-4
5.4	2.5	Sam's Choice Crabgrass Preventer 30-3-4
3	1.5	Sam's Choice Insect Control Plus Fertilizer 28-4-6
3.2	2	Sam's Choice Lawn Food 29-3-4
6	3	Sam's Choice Starter Fertilizer 20-27-5

a. Flow Control Settings are based on 3 mph forward speed.

b. The products listed are the property of their respective owners, and are not the property of, nor recommended by, Deere and Company.

Use and Care

Flow Control Settings for Specific Products

lbs / 1000 square feet	Flow Control Setting at 3 mph ^a	Materials ^b
3.6	2	Sam's Choice Starter Fertilizer 20-27-5
4	3	Scotts Classic Grass Seed Fall Grass Seed Mix
2	2	Scotts Classic Grass Seed Fall Grass Seed Mix
2.3	1.5	Scotts Grubex
3.1	2	Scotts Grubex Season Long Grub Control
2.3	2	Scotts Grubex Season Long Grub Control
1.4	1.5	Scotts Lawn Fungus Control
2.7	2	Scotts Lawn Fungus Control
2.2	2	Scotts Pure Premium Kentucky Bluegrass Mix
1.1	1.5	Scotts Pure Premium Kentucky Bluegrass Mix
2.5	2	Scotts Pure Premium Sun and Shade Grass Seed Mixture
1.25	1.5	Scotts Pure Premium Sun and Shade Grass Seed Mixture
3.6	2	Scotts Starter Fertilizer 20-27-5
5.9	2	Scotts Starter Fertilizer 20-27-5
2.7	2	Scotts Turf Builder 28-3-8
3.1	1.5	Scotts Turf Builder Lawn Fertilizer 29-3-4
2.7	2	Scotts Turf Builder with Summer Guard
2.9	2	Scotts Turf Builder Plus Weed Control
3.3	1	Scotts Winterizer 22-4-1
4.6	2	Sevin Lawn Insect Granules

lbs / 1000 square feet	Flow Control Setting at 3 mph ^a	Materials ^b
2.33	2	Sevin Lawn Insect Granules
2.25	2	Sevin Lawn Insect Granules
3	2	Spectracide Grub Stop
3	1	Spectracide Traizicide Insect Killer Granules
3.6	2	Sta-Green Lawn Fertilizer 29-2-5
2	1.5	Sta-Green Lawn Weed Control
3.2	2	Sta-Green 200 Plus Weed and Feed 28-3-3
3.6	2	Sta-Green Starter Fertilizer 18-24-10
3.2	2	Sta-Green Weed and Feed 28-2-4
10	4	Sun and Shade Grass Seed Mixture
5	3	Sun and Shade Grass Seed Mixture
3	1	Vigoro Insect Control Plus Fertilizer
3.6	2	Vigoro Starter Fertilizer
3.2	2	Vigoro Turf Fertilizer 29-3-4
3	1.5	Vigoro Ultra Turf Winterizer 22-3-14
3.2	2	Vigoro Weed and Feed
4	3	Wal Mart Gardens Kentucky Bluegrass Grass Seed
2	2	Wal Mart Gardens Kentucky Bluegrass Grass Seed
8	4	Wal Mart Gardens Kentucky 31 Tall Fescue
4	3	Wal Mart Gardens Kentucky 31 Tall Fescue
3.2	2	Wal Mart Weed and Feed 28-3-3

a. Flow Control Settings are based on 3 mph forward speed.

b. The products listed are the property of their respective owners, and are not the property of, nor recommended by, Deere and Company.

Use and Care / Quality

Calibration Settings

If the product you are using is not listed in the flow control setting table (pages 25-27), use the this calibration guide to set the flow control. *NOTE: Calibration guide information is also provided on the hopper decal of the spreader.*

- Using application information on product package, find the calibration setting in the following guide and set calibration control lever.
- Adjust spread pattern.
- Calibration settings have been determined using a 3 MPH pace or 40 ft. of travel in 9 seconds.

John Deere Quality Continues with Quality Service

John Deere provides a process to handle your questions or problems, should they arise, to ensure that product quality continues with quality parts and service support.

Follow the steps below to get answers to any questions you may have about your product.

1. Refer to your attachment and machine operator manuals.
2. In North America or Canada, call Brinly-Hardy Co. Customer Service at 1-866-218-8622 and provide the product serial number (if available) and model number.

This product was manufactured by Brinly-Hardy Co., a John Deere Licensee, located at 3230 Industrial Pkwy, Jeffersonville, IN 47130. If you have any questions or concerns with the assembly, installation or operation of this attachment see your local John Deere Dealer or call Brinly-Hardy Co. at 866-218-8622 for assistance.

Calibration Guide for Flow Control Settings

lbs/1000 Square Feet	Flow Control Setting
0.0 - 1.90	1
2.0 - 2.90	1.5
3.0 - 4.90	2
5.0 - 6.90	2.5
7.0 - 8.90	3
9.0 - 10.9	3.5
11.0 - 12.9	4
13.0 - 14.9	4.5
15.0 - 17.5	5
17.6 - 19.5	5.5
19.6 - 21.5	6
21.6 - 23.5	6.5
23.6 - 25.5	7
25.6 - 27.9	7.5
28.0 - 29.9	8
30.3 - 33.4	9
33.5 - 36.0	10

