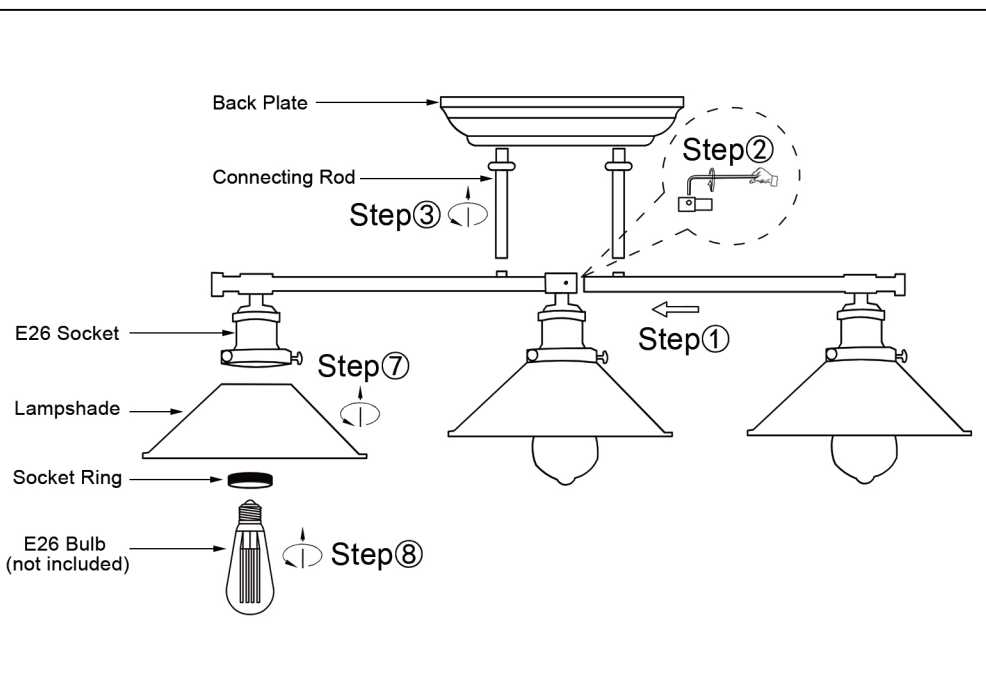
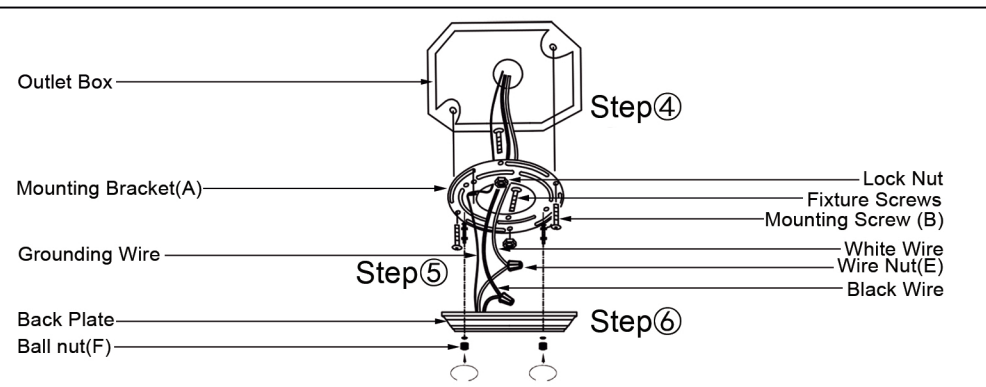
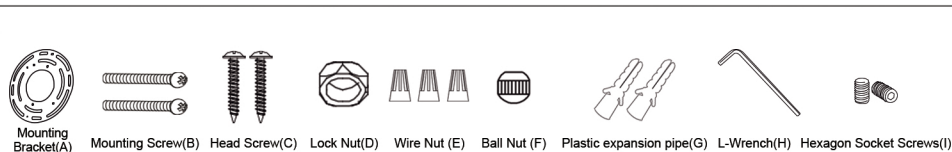


Hardware Package (included):



ASSEMBLY AND INSTALLATION INSTRUCTIONS

WARNING: TO AVOID RISK OF ELECTRICAL SHOCK, BE SURE TO SHUT OFF POWER BEFORE INSTALLING OR SERVICING THIS FIXTURE.

NOTES: 1. Before installing, consult local electrical codes for wiring and grounding requirements.
2. READ AND SAVE THESE INSTRUCTIONS.

Installation Steps

Turn off the power at fuse or circuit box

Assembly of the fixture body

Step 01~02: Screw the Hexagon Socket Screws(I) with the L-Wrench(H) to fix the two lamp rods

Step:03. Connect the Back Plate and the Lamp post with connecting rod.

Installation Instructions

Step:04. Attach the Mounting Bracket(A) to the outlet box by using two mounting screws(B).

Step:05. Pull out the source wires from the outlet box. Make wire connections using wire nuts(E) as follows:

---Connect the hot wire (usually black insulation) from the fixture to the black wire from the power source.

---Connect the neutral wire (usually white insulation) from the fixture to the white wire from the power source.

---Attach the fixture grounding wire (usually bare wire) connect it to the house grounding wire with the wire nut.

--- Carefully put the wires back into the outlet box.

Step:06. Attach the fixture body to the Mounting Bracket(A) by inserting Fixture Screws into holes on back plate, and then secure it with two ball nuts(F).

Step:07. Install the Lampshade with the Socket Ring.

Step:08. Install E26 bulb (not included). Check relamping label at socket area or packaging for maximum allowed wattage.

Attention

1. Due to the different display, the actual color can be different from the image
2. Due to the manual measurement of lamp body size, there may be a deviation of 1 / 2 inch
3. If there are any quality problems, missing parts or other something wrong of the item, please feel free to contact us and we will try our best to help you.