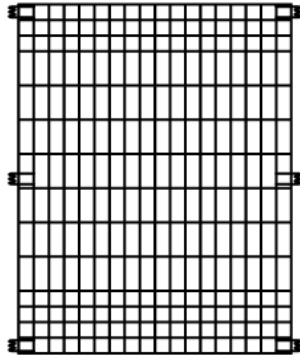
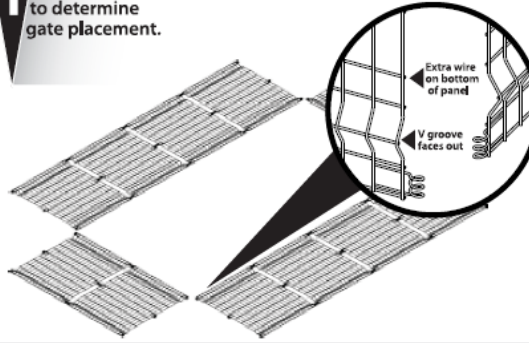


# Installation

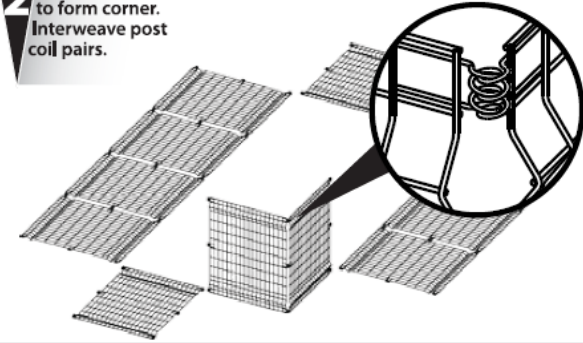


Before assembly locate bottom of panel. Bottom of panel indicated by extra horizontal wire.

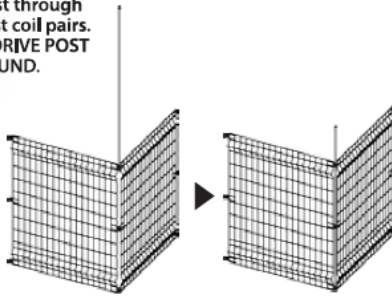
**1** Plan layout to determine gate placement.



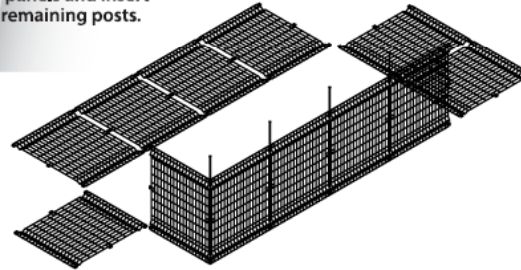
**2** Lineup two panels to form corner. Interweave post coil pairs.



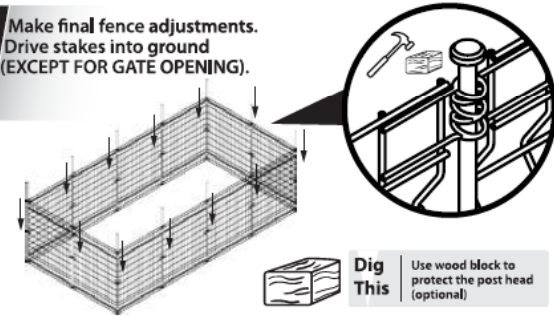
**3** Drop post through three post coil pairs. DO NOT DRIVE POST INTO GROUND.



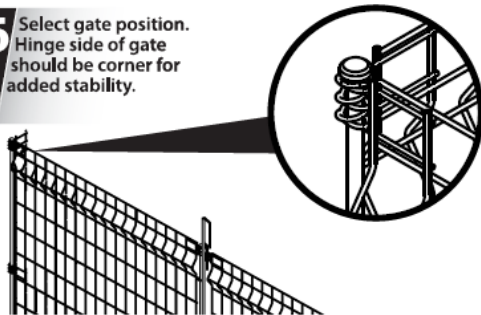
**4** Align additional panels and insert remaining posts.



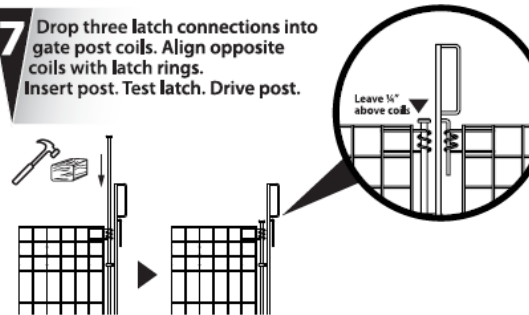
**5** Make final fence adjustments. Drive stakes into ground (EXCEPT FOR GATE OPENING).



**6** Select gate position. Hinge side of gate should be corner for added stability.



**7** Drop three latch connections into gate post coils. Align opposite coils with latch rings. Insert post. Test latch. Drive post.



**8** Latch operation

**Unlock Panel**  
Lift handle until rods are free of coils. Turn handle to allow panel

**Lock panel**  
Lift/turn handle until locking rods line up with coils. Drop handle securely into place.

