

## Medium-Duty

100 lb. (8450FM) / 90 lb. (8455FM) Load Class

1/2" Side Clearance

Max. Drawer Width: 24"



## 8450FM & 8455FM Soft-Closing Drawer Slides

The 8450FM Full Extension and 8455FM Over Travel Self-Closing Drawer Slides are designed to quietly bring a drawer to the closed position. The KV Force Management™ series establishes a new standard in Soft-Close functionality by delivering superior performance in dampening action, effortless drawer opening and smooth operation.

### Applications

- Wood residential and commercial furniture & cabinetry
- Mobile carts
- Marine and RV cabinetry

### Specifications

**Model:** 8450FM Full Extension Soft-Closing Drawer Slide  
8455FM Over Travel Soft-Closing Drawer Slide

**Module:** Soft-Close

**Mounting:** Side

**Disconnect:** Lever Release

**Hole Pattern:** 32mm and Traditional

**Face Frame Mounting:** Yes

**Type:** Ball-Bearing

**Travel:** Full Extension (8450FM), Over Travel (8455FM)

**Finish:** Anochrome, Ebony Black

**Length:** 8450FM - 12", 14", 16", 18", 20", 22", 24", 26", 28"  
8455FM - 16", 18", 20", 22", 24", 26", 28"

**Clearance:** .50" + .03"-0" on each side

**Height:** 1.79" [45.5mm]

**Packaging:** Bulk Pack (8450FMB / 8455FMB): all sizes – 10 pair per carton  
Poly Pack (8450FMP / 8455FMP): all sizes – 10 pair per carton

**Action:** Telescopic

**Slide Configuration:** Unhanded

### Rating

**Load:** 100 lb. - 8450FM / 90 lb. - 8455FM

**Max. Drawer Width:** 24"

As with all Knap & Vogt drawer slides, the 8450FM and 8455FM are designed to meet or exceed ANSI performance standards as established by BIFMA, BHMA and KCMA.

### Accessories

8403: Rear Mounting Bracket

8404: Front Face Frame Bracket

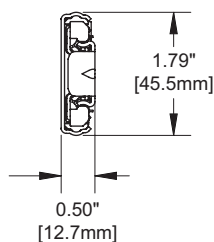
### Hardware

#7 x 1/2" Phillips Pan Head

### Warranty

Limited Lifetime Warranty

#### Profile



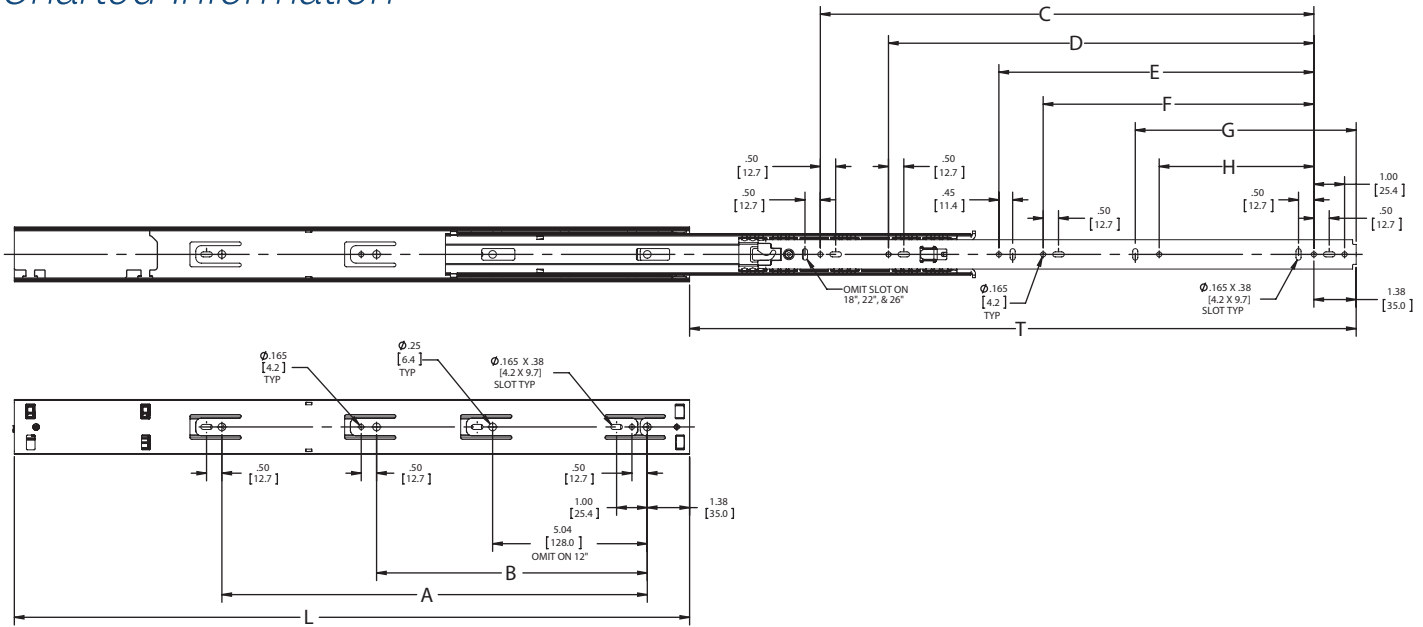
#### Clearance

1/2" + 1/32"-0"

.50" + .03"-0"

12.7mm + .8mm - 0mm

# Charted Information



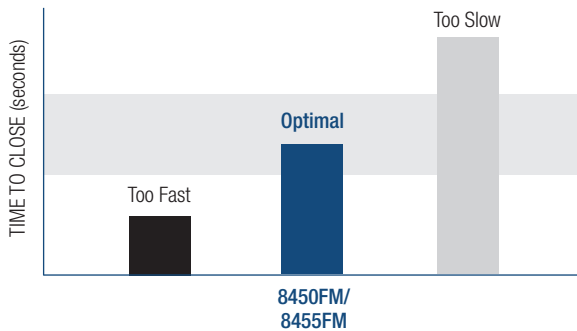
SKU Number*	Slide Size inch/mm	Length inch/mm	Travel inch/mm	A inch/mm	B inch/mm	C inch/mm	D inch/mm	E inch/mm	F inch/mm	G Inch/mm	H Inch/mm
8450FMB 12	12" [300mm]	12.00" [304.8mm]	10.19" [258.8mm]	3.78" [96.0mm]	-	-	-	3.74" [94.9mm]	-	7.08" [179.8mm]	1.26" [32.0mm]
8450FMB 14	14" [350mm]	14.00" [355.6mm]	13.99" [355.3mm]	-	-	-	-	5.54" [140.6mm]	-	7.08" [179.8mm]	1.26" [32.0mm]
8450FMB 16	16" [400mm]	16.00" [406.4mm]	15.99" [406.1mm]	-	8.82" [224.0mm]	-	-	7.54" [191.4mm]	5.04" [128.0mm]	7.08" [179.8mm]	-
8450FMB 18	18" [450mm]	18.00" [457.2mm]	17.99" [456.9mm]	-	8.82" [224.0mm]	12.60" [320.0mm]	-	8.54" [216.8mm]	-	7.08" [179.8mm]	5.04" [128.0mm]
8450FMB 20	20" [500mm]	20.00" [508.0mm]	19.99" [207.7mm]	12.60" [320.0mm]	8.82" [224.0mm]	13.86" [352.0mm]	-	9.54" [242.2mm]	-	7.08" [179.8mm]	5.04" [128.0mm]
8450FMB 22	22" [550mm]	22.00" [558.8mm]	21.99" [558.5mm]	13.86" [352.0mm]	8.82" [224.0mm]	16.38" [416.0mm]	15.12" [384.0mm]	10.54" [267.6mm]	8.82" [224.0mm]	7.08" [179.8mm]	5.04" [128.0mm]
8450FMB 24	24" [600mm]	24.00" [609.6mm]	23.99" [609.3mm]	15.12" [384.0mm]	8.82" [224.0mm]	17.64" [448.0mm]	16.38" [416.0mm]	11.54" [293.0mm]	8.82" [224.0mm]	7.08" [179.8mm]	5.04" [128.0mm]
8450FMB 26	26" [650mm]	26.00" [660.4mm]	25.99" [660.1mm]	17.64" [448.0mm]	8.82" [224.0mm]	20.16" [512.1mm]	17.64" [448.0mm]	12.54" [318.4mm]	8.82" [224.0mm]	7.08" [179.8mm]	5.04" [128.0mm]
8450FMB 28	28" [700mm]	28.00" [711.2mm]	27.99" [710.9mm]	20.16" [512.0mm]	8.82" [224.0mm]	21.42" [544.0mm]	18.90" [480.0mm]	13.54" [343.8mm]	8.82" [224.0mm]	7.08" [179.8mm]	5.04" [128.0mm]

\*Also available in Poly Pack (eg, 8450FMP 12)

## Accessories Soft-Close Dampening Effect

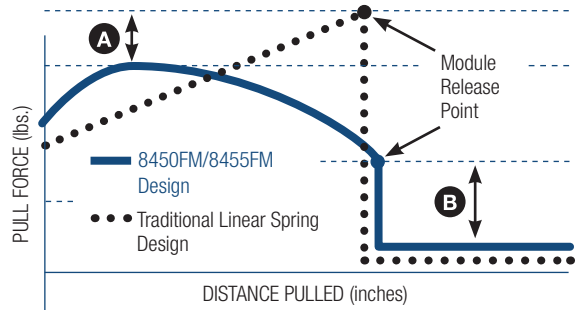


8403 Rear Mounting Bracket  
8404 Front Face Frame Bracket



- 8450FM/8455FM soft-close slides close at the optimal speed due to the perfect balance of dampening and spring forces.
- Slides that close too fast have little to no dampening effect.
- Slides that close too slow have poor closure performance.

## Soft-Close Module Force Curve



8450FM/8455FM soft-close slides have:

- A** A lower peak pull force – making them the easiest Soft-Close slides to open.
- B** Significantly less drop off force at the module release point – eliminating the “jerkiness” of traditional linear spring designs.



**KNAPE & VOGT.**

2700 Oak Industrial Dr. NE  
Grand Rapids, MI 49505-6026 USA  
1.800.253.1561 | 616.459.3311  
Fax: 877.636.3290  
www.kv.com

This and other KV literature is available for download at [www.kv.com](http://www.kv.com) > Resource Library

Knapé & Vogt reserves the right to change product specifications at any time without notice and without incurring responsibility for existing units.

©2015 Knapé & Vogt. KV and the KV logo are trademarks of Knapé & Vogt.

0L2275/1015