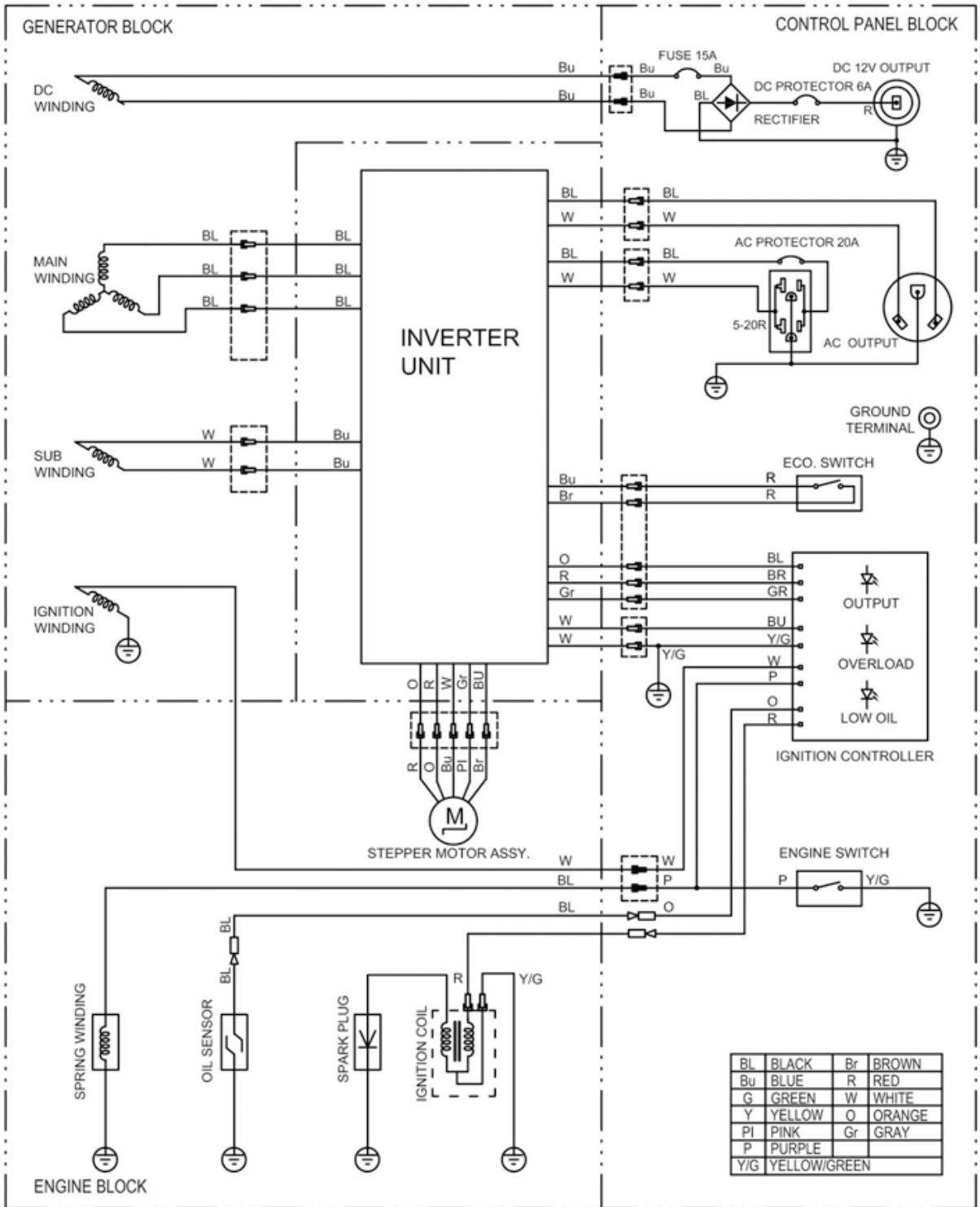


WIRING DIAGRAM



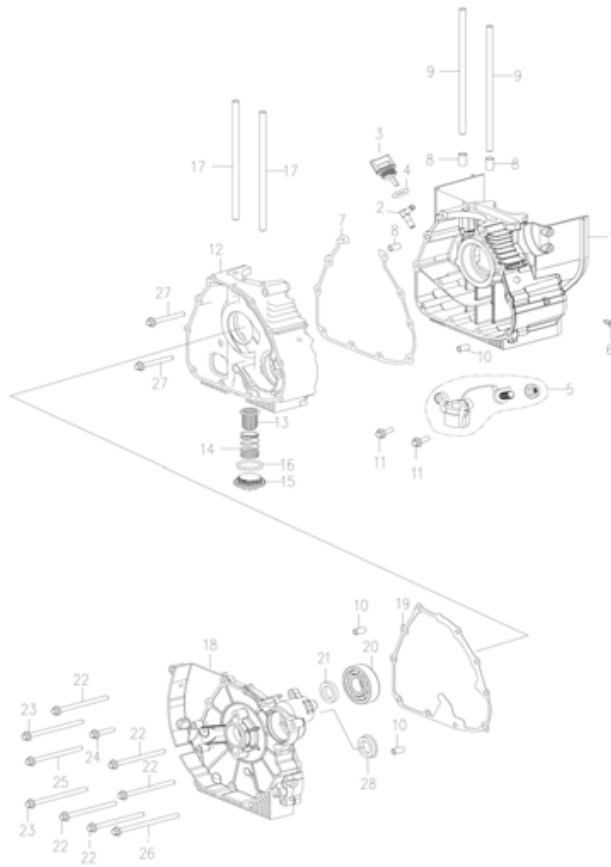


FIG.A CRANKCASE ASSY

No.	Part No.	Description	Qty
1*	15580101100001	Left Crankcase	1
2	11310104100001	Pipe Joint	1
3	15560101201002	Oil Plug Assembly	1
4	15560101202051	O ring 19*3.55	1
5	15560101300002	Oil Lever Sensor	1
6	00427014801001	Tapped Screw ST4.8x10	1
7	15570102001002	Crankcase Gasket	1
8	12210100002001	Dowel Pin 10x16	2
9	12210202004011	Long Stud 8x195	2
10	12210202001001	Dowel Pin 8x14	4
11	00033000601611	Bolt M6x18	2
12*	15580102100001	Right Crankcase Component	1
13	12210203100002	Oil Filter	1
14	12210203002001	Oil Filter Spring	1
15	12210203004002	Oil Filter Cover	1
16	12210203003101	O-Ring 30.5x3	1
17	12210201001011	Long Stud 8x185.5	2
18	15580103001001	Right Cover	1
19	15560103002001	Right Cover Gasket	1
20	00810000620401	Bearing	1
21	15560103003001	Oil Seal 19.8*30*5	1
22	00033000608011	Hexagon Flange Bolts M6x80	5
23	00033000609011	Hexagon Flange Bolts M6x90	2
24	00033000602811	Hexagon Flange Bolts M6x28	1
25	00033000607011	Hexagon Flange Bolts M6x70	1
26	00033000610011	Hexagon Flange Bolts M6x100	1
27	00033000605011	Hexagon Flange Bolts M6x50	2
28	462403000130	Plug	1

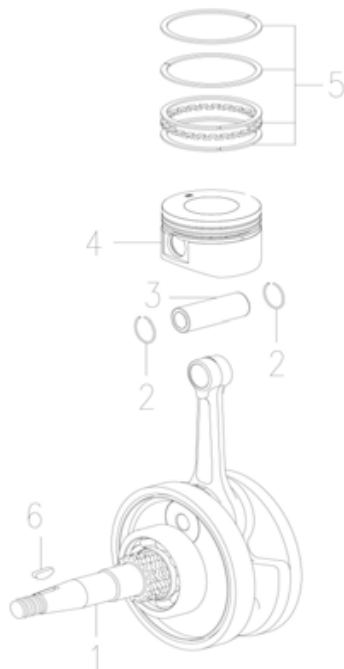


FIG C. CRANKSHAFT PISTON

No.	Part No.	Description	Qty
1	15580301000001	Crankshaft Connecting Rod Assy	1
2	12210300001003	Piston Pin Clip	2
3*	12710300002003	Piston Pin	1
4*	12710301001002	Piston	1
5*	12710301006001	Oil Ring	1
6	15560300001001	Woodruff Key	1

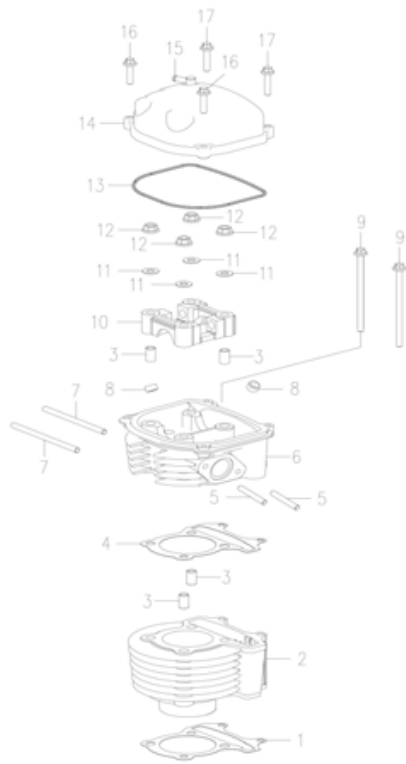


FIG.B CYLINDER HEAD

No.	Part No.	Description	Qty
1*	12800100004002	Cylinder Gasket	1
2*	12800102100002	Cylinder Component	1
3	12210100002001	Dowel Pin 10x116	4
4*	12800100005001	Cylinder Head Gasket	1
5	00074000603211	Stud Bolt M6x32	2
6*	15570201100001	Cylinder Head Component	1
7	15560201001011	Stud Bolt M6x118	2
8	12210101200010	Valve Oil Seal Component	2
9	00033000610011	Hexagon Flange Bolts M6x100	2
10	12210100001001	Camshaft Holder Seat	1
11	12700100007031	Copper Washer 8	4
12	00129000800011	Hexagon Flange Nuts M8	4
13	12210104003022	Cylinder Head Cover Seal	1
14	12210104001201	Cylinder Head Cover	1
15	15560203100001	Pipe Joint	1
16	00033000602511	Hexagon Flange Bolts M6x25	2
17	00033000603511	Hexagon Flange Bolts M6x35	2



FIG E. OIL PUMP

No.	Part No.	Description	Qty
1	00033000601211	Bolt M6x12	2
2	12211200001002	Oil Pump Sprocket Cover	1
3	00128000600011	Hexagon Flange Nuts M6	1
4	12211201000001	Oil Pump Chain 6.35x44	1
5	12211202007002	Oil Pump Sprocket	1
6	00033000602511	Hexagon Flange Bolts M6x25	2
7	12211202000101	Oil Pump Assy	1

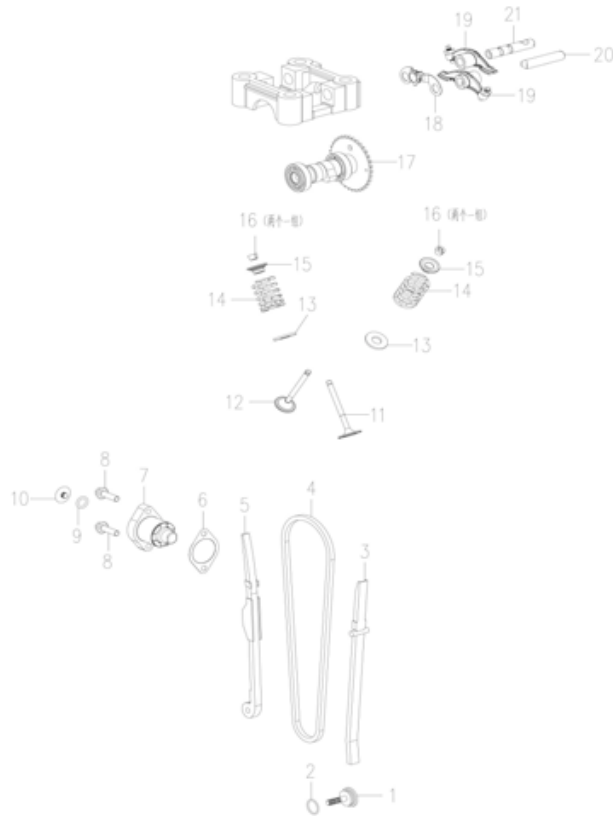


FIG D. CAMSHAFT

No.	Part No.	Description	Qty
1	12210402001011	Tension Rod Bolt	1
2	12210402002001	O-Ring 15.2x1.5	1
3	12210405000003	Camshaft Chain Guide Parts	1
4	12210406000001	Camshaft Chain 6.35x90	1
5	12210403000003	Tension Rod Assy	1
6	12210400008002	Regulator Gasket	1
7	12210404000002	Camshaft Chain Regulator	1
8	00033000602211	Hexagon Flange Bolts M6x22	2
9	00912009501501	O-Ring 9x1.5	1
10	12210404001011	Pan Head Screw	1
11	12800400003001	Exhaust Valve	1
12	12800400007001	Intake Valve	1
13	12210400006001	Valve Spring Ring	2
14	12210400004001	Valve Spring	2
15	12210400001003	Valve Spring Seat	2
16	12210400002004	Valve Lock Clip	2
17	15560401000001	Camshaft Assy	1
18	15560407001011	Rocker Shaft Washer	1
19	12210400010001	Valve Rocker Arm	2
20	12210400009001	Exhaust Valve Rocker Arm Shaft	1
21	12210400009001	Intake Valve Rocker Arm Shaft	1

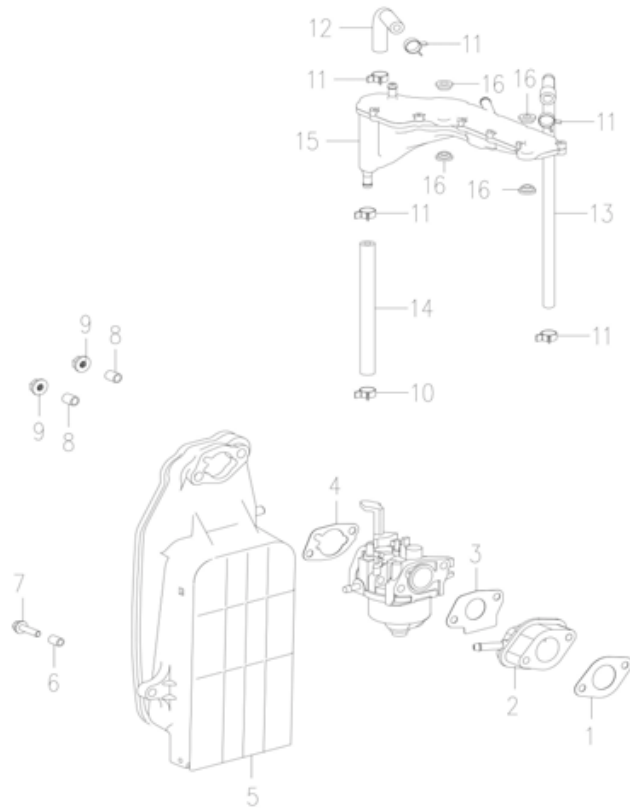


FIG F. AIR CLEANER

No.	Part No.	Description	Qty
1	15560800001001	Insulation Board Gasket	1
2	15560802001501	Insulation Board Components	1
3	15560800003001	Carburetor Gasket	1
4	15560801006002	Air Cleaner Gasket	1
5	15560801001001	Air Cleaner Assy	1
	15560801002001	Cover of Air Cleaner Assy.	1
	15560801003001	Cover of Foam/sponge	1
	15560801004003	Foam/sponge	1
6	15561100004002	Fan Volute Bush	1
7	00033000502011	Hexagon Flange Bolts M5x20	1
8	15560801005002	Air Cleaner Bush	2
9	00128000600011	Hexagon Flange Nuts M6	2
10	12700100009002	Clamp 11.5	2
11	15560800006002	Clamp 10	4
12	15560800002001	Rubber Tube I	1
13	15560800004001	Rubber Tube II	1
14	15560800005001	Rubber Tube III	1
15	15560801007003	Oil and Gas Separation Device	1
16	15560802000004	Insulation Gasket	4

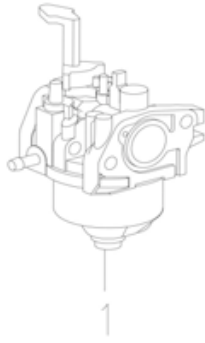


FIG.G CARBURETOR

No.	Part No.	Description	Qty
1*	15570900000501	Carburetor Assy	1

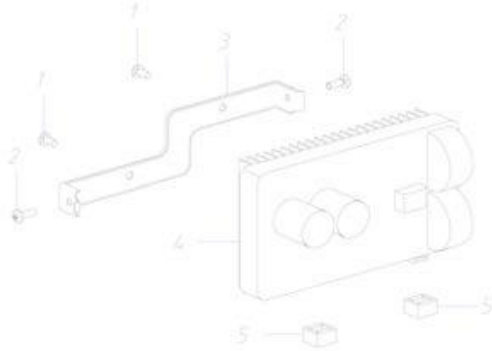


FIG N. INVERTER

No.	Part No.	Description	Qty
1	002200006012	Pan Head Screw M6×12	2
2	007090005012	Screw M5×12	2
3	463019000010	Inverter Holder	1
4	463519010000	Inverter Assembly 2.3KW 120V 60Hz	1
5	462419000010	Inverter Gasket	2

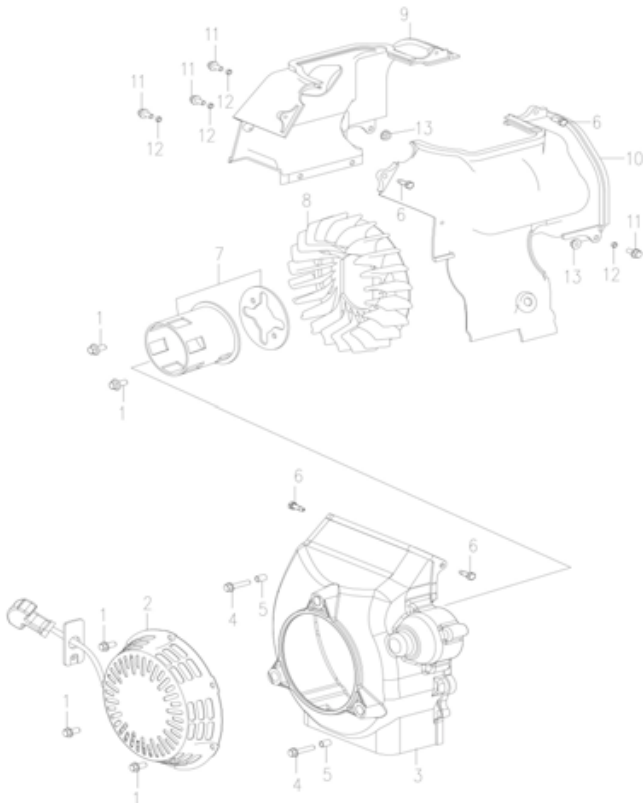


FIG H. RECOIL STARTER

No.	Part No.	Description	Qty
1	00033000601211	Hexagon Flange Bolts M6×12	5
2	15560602000002	Recoil Starter Parts	1
	15560602001101	Handle	1
	15560602003001	Fender	1
3	15581100001001	Fan Volute	1
4	00033000502011	Bolts M5×20	4
5	15561100004002	Fan Volute Bush	4
6	00427014801841	Tapping Screw ST4.8×16-F.H	4
7	15580600002001	Starting Hub	1
8	15561100001001	Cooling Fan	1
9	15561100006001	Air Guide B	1
10	15561100005001	Air Guide A	1
11	00033000501221	Hexagon Flange Bolts M5×12	4
12	15561100007003	Air Guide Bush	4
13	00129000500011	Hexagon Flange Nuts M5	2

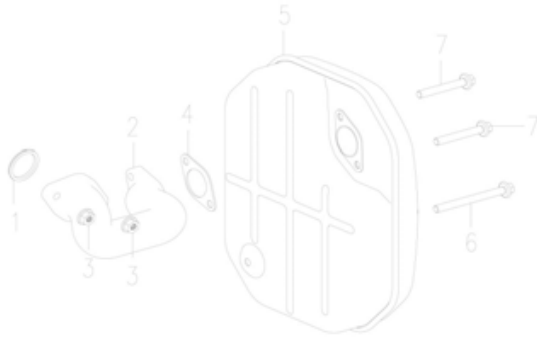


FIG I. MUFFLER (FOR EPA)

No.	Part No.	Description	Qty
1	15560702000001	Muffler Pipe Gasket	1
2	15560700001006	Muffler Pipe	1
3	00141000600011	Metal Hexagon Flange Nuts M6	2
4	15560700002001	Muffler Gasket	1
5	15570701000001	Muffler Assy (Catalyst)	1
6	00722000608011	Bolt M6×80	1
7	00033000605011	Bolt M6×50	2

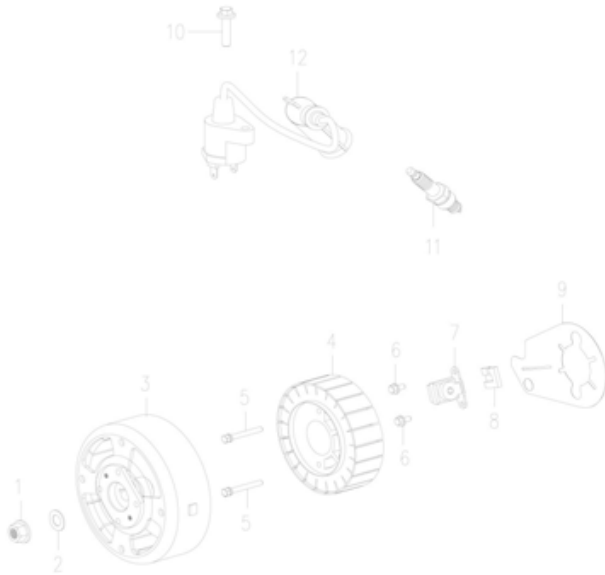


FIG J. GENERATOR

No.	Part No.	Description	Qty
1	00129021212511	Hexagon Flange Nuts M12x1.25	1
2	12210500006011	Gasket φ12.2*25*2	1
3*	15581001200002	Rotor 3.0KW	1
4*	15581001110002	Stator 3.0KW 230V	1
5	00722000605011	Bolts M5×50	2
6	00033000501221	Hexagon Flange Bolts M5×12	2
7	15561000001002	Trigger	1
8	15561000002002	Rubber Block	1
9	15561000005001	Insulative Gasket	1
10	00241006302541	Tapped Screw ST6.3×25-F.H	1
11	12211030000005	Spark Plug A7RTC	1
12	12211010000011	Ignition Coil	1

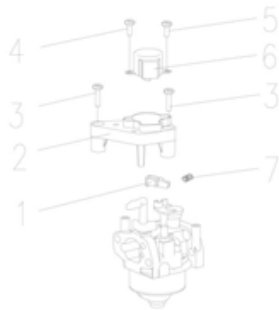


FIG M. GOVERNOR

No.	Part No.	Description	Qty
1	155609000020	Drive Arm	1
2	462420030000	Stepper Motor Holder	1
3	007090004016	Screw M4×16	2
4	007090003008	Screw M3×8	1
5	007090003005	Screw M3×5	1
6	462420020000	Stepper Motor Assy	1
7	155609000010	Drive Arm Spring	1

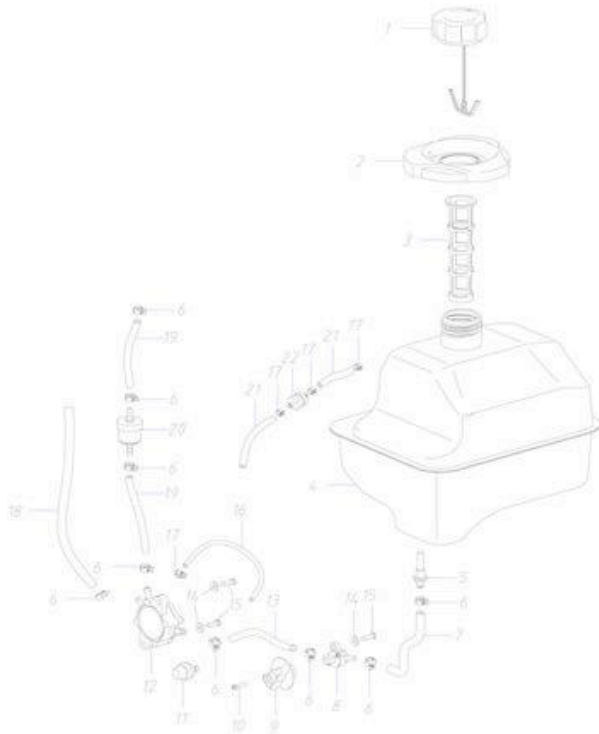


FIG K. FUEL TANK(EPA)

No.	Part No.	Description	Qty
1	462405130000	Fuel Tank Cap Assy. (EPA)	1
2	463003000080	Fuel Tank Port Rubber	1
3	462405020000	Fuel Tank Filter	1
4	463005010000	Fuel Tank (iron)	1
5	463005030000	Fuel Outlet Filter	1
6	480202010090	Clamp -9	12
7	463005000030	Special Fuel Horse (EPA)	1
8	462405040000	Fuel Cock	1
9	462405000030	Fuel Cock Handle	1
10	007090004016	Screw GB/T9074.4 M4×16	1
11	463005050000	Fuel Lubricator	1
12	463005040000	Fuel Pump	1
13	461505000041	Fuel Horse (EPA)	1
14	003040004001	Gasket GB/T96 φ4	3
15	004210142019	Tapped Screw GB/T845 ST4.2×19	3
16	480201040801	Fuel Hose (4-8) -110 (EPA)	1
17	480202010080	Clamp -8	4
18	480201051000	Fuel Hose (5-10) -350	1
19	480201051001	Fuel Hose (5-10) -90 (EPA)	2
20	462405050000	Fuel Filter	1
21	480201040801	Fuel Hose (4-8) -130 (EPA)	2
22	462405120000	Balance Valve	1

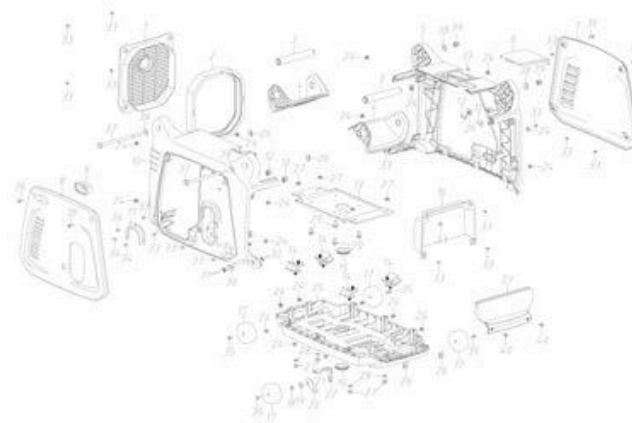


FIG L. SHELL

No.	Part No.	Description	Qty
1	463003000090	Muffer Cover	1
2	463003000100	Muffer Cover Seal	1
3	463003000190	Handle	2
4	463003000110	Handle board	2
5	463003000010	Left Cover of Shell	1
6	463003000030	Upper Cover	1
7	463003000020	Left Side Cover	1
8	463003000050	Right Side Cover	1
9	463003000130	Rubber of Choke	1
10	463003000040	Right Cover of Shell	1
11	463003000060	Edge Protection	1
12	463003000200	Fuel Tank Vibration Absorber	4
13	463003010000	Chassis	1
14	462403040000	Shock Pad 1525-2	4
15	463003000140	Chassis Rubber Cover	2
16	463003000070	Panel Box	1
17	480220207530	Wheels 3"	4
18	003020012001	Flat Washer GB/T97 φ12	1
19	463003000230	Rubber Flat Washer φ10×φ20×1.5	1
20	463003000150	Brake Part 1	1
21	463003000250	Brake Rubber	1
22	463003000160	Brake Part 2	1
23	463003000120	Battery Cover	1
24	460703000110	Fastener	18
25	463003010000	Chassis	1
26	463003000210	Fastening Nut	6
27	001280008001	Flange Nut GB/T6177 M8	8
28	003020008001	Flat Washer GB/T97 φ8	4
29	000310008016	Flange Bolt GB/T5789 M8×16	4
30	463003000170	Brake Part 3	1
31	002210004012	Countersunk Head Screw M4×12	2
32	001280004001	Flange Nut GB/T6177 M4	2
33	004210148013	Tapped Screw GB/T845 ST4.8×13	19
34	004210848095	Tapped Screw GB/T845 ST4.8×9.5	3
35	000310005010	Flange Bolt GB/T5789 M5×10	4
36	002200006016	Pan Head Screw M6×16	4
37	000310010230	Flange Bolt GB/T5789 M10×230	2
38	003020012001	Flat Washer GB/T97 φ10	4
39	001190010001	Nut GB/T923 M10	2
40	002200006012	Pan Head Screw M6×12	2

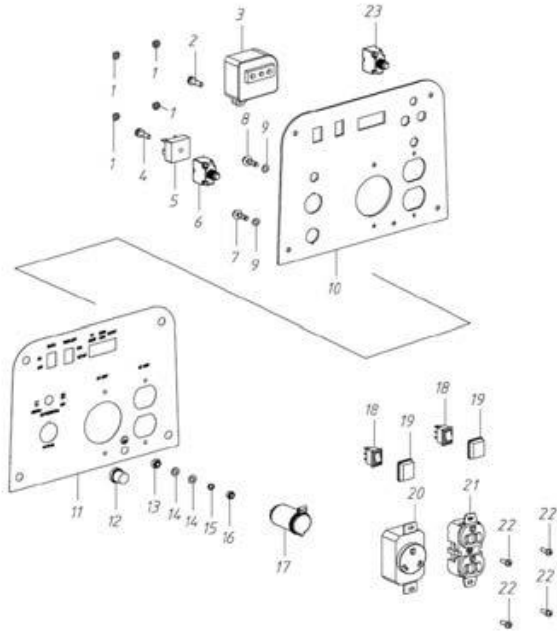


FIG O. CONTROL PANEL (FOR USA)

No.	Part No.	Description	Qty
1	001280004001	Flange Nut GB/T6177 M4	4
2	007090005016	Screw M5×16	1
3	462417013000	Ignition Controller IC-2500	1
4	007080005016	Screw M5×16	1
5	480110350200	Rectifier KBPC3502	1
6	480107880060	Overload Protector 6A	1
7	007090005008	Screw M5×8	4
8	000330005016	Flange Bolt GB/16674 M5×16	1
9	003210005001	Lock Gasket GB862.2 φ5	4
10	463017061000	Panel Components	1
11	463188000090	Panel Sticker	1
12	480107000020	Water-Proof Cap of Overload Protector	2
13	001280005001	Hexagon Flange Nut M5	1
14	003020005001	Flat Washer GB/T97 φ5	2
15	003000005001	Spring Washer GB/T93 φ5	1
16	001200005001	Hexagon Nut GB/T6170 M5	1
17	480101050050	Cigar Lighter Socket	1
18	480105010010	Boat Switch	2
19	480105090010	Water-Proof Cap of Boat Switch	2
20	480101020100	American Socket RV	1
21	480101020010	American Double Socket 5-20R	1
22	007090004012	Screw M4×12	4
23	480107740200	Overload Protector 20A	1
	463117060000	Control panel	1

201605