



1500W DIGGER POST HOLE ELECTRIC

ITEM: 85060



OWNER'S MANUAL AND SAFETY INSTRUCTIONS

SAVE THIS MANUAL: KEEP THIS MANUAL FOR SAFETY WARNINGS, PRECAUTIONS, ASSEMBLY, OPERATING, INSPECTION, MAINTENANCE AND CLEANING PROCEDURES. WRITE THE PRODUCT'S SERIAL NUMBER ON THE BACK OF THE MANUAL NEAR THE ASSEMBLY DIAGRAM (OR MONTH AND YEAR OF PURCHASE IF PRODUCT HAS NO NUMBER).

FOR QUESTIONS PLEASE CALL OUR CUSTOMER SUPPORT: (909) 628 0880 MON-FRI 9AM TO 3PM PST

IMPORTANT SAFETY INFORMATION



GENERAL SAFETY WARNINGS

Read all safety warnings and instructions. Failure to follow the warnings and instructions may result in electric shock, fire and/or serious injury. Save all warnings and instructions for future reference.

SAFETY

Please read this section carefully. Read entire operating and maintenance instructions AND the instructions for the equipment this engine powers. Failure to follow instructions could result in serious injury or death. Operate the auger according to the safety instructions outlined here and inserted throughout the text. Anyone who uses this auger must read the instructions and be familiar with the controls.

- The size, power, complexity and operating characteristics of this type of powered equipment would dictate that each operator must receive adequate, professional instruction regarding the proper operation of this Hole Digger before being allowed to utilize it. **BEFORE** attempting to utilize this Hole Digger, read this Operator Manual, to familiarize each operator with its correct operating procedures. Avoid the urge not to take the necessary time to read this Operator Manual before operating the Hole Digger. **DO NOT OPERATE THE HOLE DIGGER UNTIL EACH OPERATOR COMPLETELY COMPREHENDS THE CONTENTS OF THIS MANUAL, THE APPLICABLE SAFETY AND OPERATIONAL INFORMATION DVD, APPLICABLE SUPPLEMENTAL INFORMATION AND THE INFORMATION SUPPLIED BY THE ENGINE MANUFACTURER.**
- Develop a comprehensive program for the safe operation of the Hole Digger by its owner(s) and/or operator(s). Such a program will include, but is not limited to: instructional requirements for operation, applicable OSHA requirements, local laws and regulations, job site safety and a Hole Digger maintenance program. Constantly examine and upgrade this program to guarantee owner(s) and/or operator(s) safety.
- Determine that the Hole Digger is in its original, factory configuration and has not been modified in any manner. Many modifications can result in potentially dangerous configurations that can lead to property damage and/or personal injury.
- Minors should never be allowed to operate the Hole Digger. Bystanders, especially children and animals, should not be allowed in the area where the Hole Digger is in use. The hole digging process can result in flying particles being emitted at high velocity and striking the operator and/or onlookers. This can lead to the possibility of property damage and/or personal injury. Keep all body parts, loose clothing, foreign objects and onlookers clear of the rotating auger and/or auger extensions.
- Operators must be in proper physical condition, mental health and not under the influence of any substance (drugs, alcohol, etc.) which might impair vision, dexterity or judgment. Working with the Hole Digger is strenuous. If you have any condition that might be aggravated by strenuous work, check with your doctor **BEFORE** operating the Hole Digger.
- Prolonged use of the Hole Digger (or other, similar machines) exposes the operator to vibrations which may produce Whitefinger Disease (Raynaud's Phenomenon). This phenomenon reduces the hand's ability to feel and regulate temperature, produces numbness and burning sensations and may cause nerve and circulation damage and tissue necrosis. Anti-vibration systems do not guarantee that you will not sustain Whitefinger Disease. Therefore, continuous and regular users should closely monitor the condition of their hands and fingers. After each period of use, exercise to restore normal blood circulation. If any of the symptoms appear, seek medical advice immediately.
- Clothing must be sturdy and snug fitting, but allow complete freedom of movement. Never wear loose fitting jackets, scarves, neck ties, jewelry, flared or cuffed pants or anything that could become caught on controls or moving parts. Wear long pants to protect your legs. Protect your hands with heavy duty, non-slip gloves to improve your grip. Good footing is most important when operating the Hole Digger. Wear sturdy boots with non-slip soles. Steel-toed safety shoes are highly recommended.

IMPORTANT SAFETY INFORMATION

- Flying debris, generated by the hole digging process, can cause eye injury. Eye protection is required while operating or when near operating equipment.
- Visually inspect the Hole Digger, auger(s), auger extension, and accessories for damaged or worn parts. Inspect each auger for the proper screw bit and blade. Look for loose and/or damaged handle grip areas. Check for loose and/or broken parts. Determine that operator controls work freely, all safety devices are operative and information/safety decals are readable. Check to determine that the Hole Digger and all related accessories are in good mechanical condition **BEFORE** utilization.
- Know how the controls operate. Know how to stop the engine quickly in an emergency. **ALWAYS** start the engine according to the instructions as outlined in this manual to minimize the possibility of unexpected or uncontrolled auger rotation. Unexpected auger rotation can cause loss of machine control, and the possibility of property damage and/or personal injury.
- **DO NOT** operate the Hole Digger with onlookers close by. Caution all onlookers to stand clear. The hole digging process can result in flying particles being emitted at high velocity and striking the operator and/or onlookers, This can lead to the possibility of property damage and/or personal injury. Wear proper safety eyewear. Keep all body parts, loose clothing and foreign objects clear of the rotating auger.
- **NOTE:** This Post Hole Digger operates with no more than 6" bits.
- Operate only when/where visibility and light are adequate for the job at hand.
- Stop the engine between each hole to minimize the possibility of property damage and/or personal injury. Normal operation is on level surfaces.
- This machine is not designed for working with ice, excessively rocky ground and especially in an area which with underground electric, gas, water, or telephone lines. This machine is not designed for use in any position other than the auger bit is in upright.
- Even with the intended use of the appliance there is always a residual risk, which can not prevented. According to the type and construction of the appliance the following potential hazards might apply:
 - Access to the rotating auger bit (cutting hazards)
 - Unforeseen, abrupt movement of the auger bit. (vibrating on hands)
 - Flung out of foreign materials from the working area.
 - Inhalation of work place particles, emissions from the gasoline engine
 - Skin contact with the fuel (gasoline / oil)
 - Loss of hearing, if no required ear protection used during work.
- Keep work area clean and well lit. Cluttered and dark areas invite accidents.
- **DO NOT** operate power tools in explosive atmospheres, such as in the presence of flammable liquids, gases or dust. Power tools create sparks which may ignite the dust or fumes.
- Keep children and bystanders away while operating a power tool. Distractions can cause you to lose control.
- Always check that the power supply corresponds to the voltage on the rating plate.
- Power tool plugs must match the outlet. Never modify the plug in any way. **DO NOT** use any adapter plugs with earthed (grounded) power tools. Unmodified plugs and matching outlets will reduce risk of electric shock. Avoid body contact with earthed or grounded surfaces such as pipes, radiators, ranges and refrigerators. There is an increased risk of electric shock if your body is earthed or grounded.

IMPORTANT SAFETY INFORMATION

- **DO NOT** expose power tools to rain or wet conditions. Water entering a power tool will increase the risk of electric shock.
- **DO NOT** abuse the cord. Never use the cord for carrying, pulling or unplugging the power tool. Keep cord away from heat, oil, sharp edges or moving parts. Damaged or entangled cords increase the risk of electric shock.
- When operating a power tool outdoors, use an extension cord suitable for outdoor use. Use of a cord suitable for outdoor use reduces the risk of electric shock.
If operating a power tool in a damp location is unavoidable, use a residual cu
- Remove any adjusting key or wrench before turning the power tool on. A wrench or a key left attached to a rotating part of the power tool may result in personal injury.
- **DO NOT** overreach. Keep proper footing and balance at all times. This enables better control of the power tool in unexpected situations.
- Dress properly. **DO NOT** wear loose clothing or jewellery. Keep your hair, clothing and gloves away from moving parts. Loose clothes, jewellery or long hair can be caught in moving parts.
- **DO NOT** force the power tool. Use the correct power tool for your application. The correct power tool will do the job better and safer at the rate for which it was designed.
- **DO NOT** use the power tool if the switch does not turn it on and off. Any power tool that cannot be controlled with the switch is dangemus and must be repaired.
- Disconnect the plug from the power source before making any adjustments, changing accessories, or storing power tools. Such preventive safety measures reduce the risk of starting the power tool accidentally.
- Store idle power tools out of the reach of children and do not allow persons unfamiliar with the power tool or these instructions to operate the power tool. Power tools are dangerous in the hands of untrained users.
- Maintain power tools. Check for misalignment or sticking of moving parts, breakage of parts and any other condition that may affect the power tool's operation. If damaged, have the power tool repaired before use. Many accidents are caused by poorly maintained power tools.
- Make sure the extension cord is in good condition. When using an extension cord, be sure to use one that is heavy enough to carry the current that your product will draw. An undersized cord will cause a drop in line voltage, which will result in loss of power and overheating.
- Before connecting the motor to the power line, make sure the switch is in the **OFF** position and the electric current is rated the same as the current stamped on the motor nameplate. Running at a lower voltage will damage the motor.
- This tool must be grounded while in use in order to protect the operator from electric shock.

DO NOT place excessive body weight on the machine.

DO NOT use an ice auger bit in earth or an earth auger bit in ice. A different style of auger bit is required for each type of drilling.

DO NOT use the auger in excessively rocky ground.

DO NOT submerge earth auger in any liquids.

DO NOT use products that contain ammonia, chlorine, or abrasives.

DO NOT use chlorinated cleaning solvents, carbon tetrachloride, kerosene, or gasoline.

Keep earth auger body clean. Use a soft cloth dampened with a mild soap and water mixture and wipe the earth auger body to clean.



SAVE THESE WARNINGS

PACKAGE CONTENTS:

- 1 x 1200W electric earth auger
- 1 x Auger bit
- 2 x Bolt
- 2 x Nut
- 1 x Hex spanner
- 1 x Manual

CAUTION:

- Remove all packing materials
- Remove remaining packaging and transit supports (if existing)
- Check the completeness of the packing content
- Check the appliance, the power cord, the power plug and all accessories for transportation, damages.
- Keep the packaging materials as far as possible till the end of the warranty period. Dispose it into your local waste disposal system afterwards.

TECHNICAL DATA:

- Power supply voltage: 110V- 60Hz
- Power consumption: 10.9AMP
- Diameter auger bit: 4 inch
- Drilling depth: 560mm
- Netto weight: 12.8kg

SOUND EMISSION :

Noise Power Level LWA	90 dB(A)	K=3 dB(A)
Noise Power Level LPA	102 db(A)	K=3 dB(A)
aw (vibration)	5.5 m/s *2	K=1.5 m/s*2

ATTENTION! The sound power pressure may exceed 85 dB(A), in this case individual hearing protection must be worn.

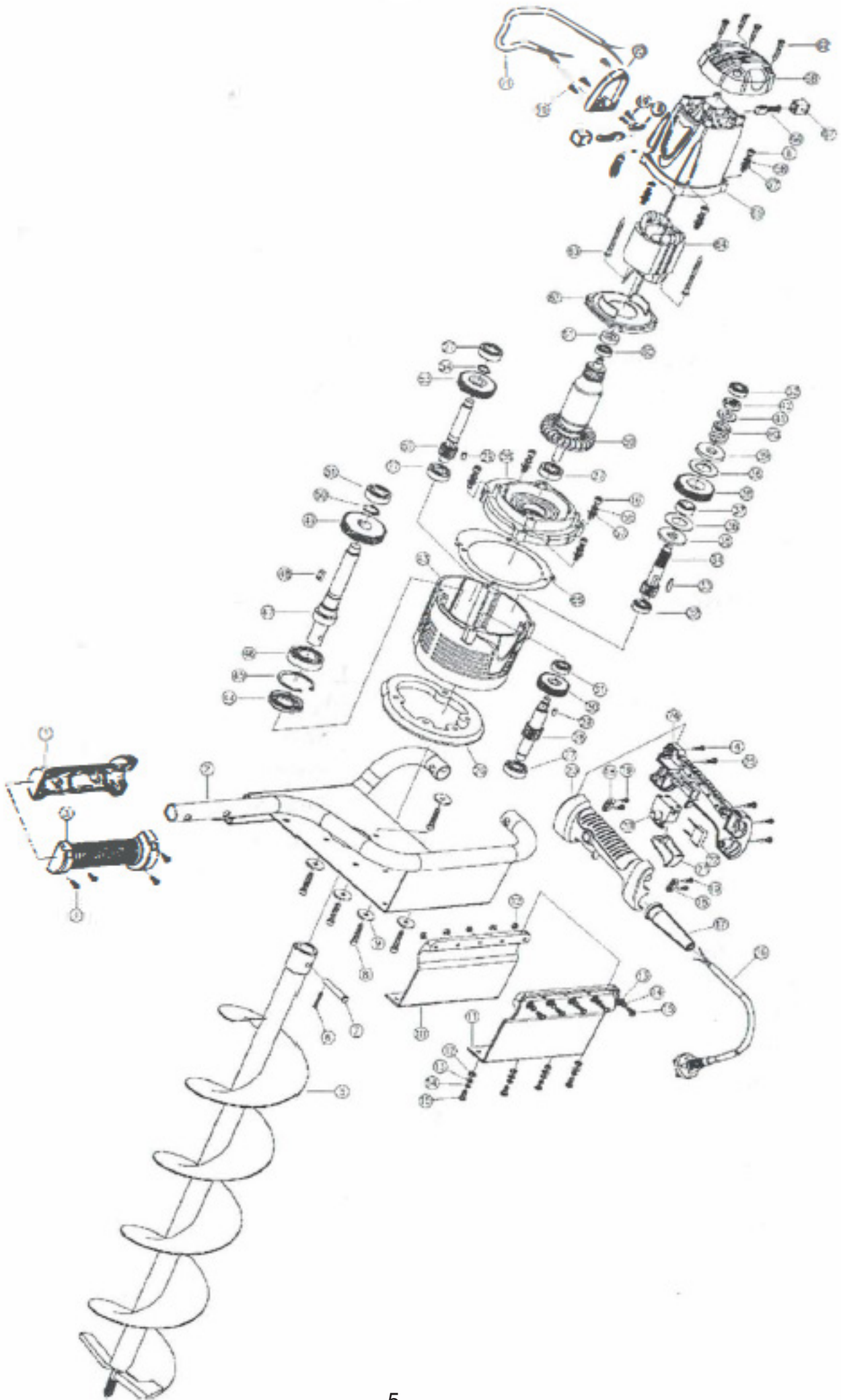
ASSEMBLY

1. Put the auger into the output shaft of the auger bit;
2. Insert the bolt;
3. Lock it with the nut.

OPERATION

1. Before starting machine, position auger upright at desired drilling point.
2. Position feet stable and away from the auger bit.
3. Firmly grip the two handles with both hands.
4. Slowly squeeze the switch trigger to rotate the auger bit.
5. Press the handles lightly downward to drill a hole.
6. Raise the auger frequently to help clear drilling debris from the hole.
7. Overloading the auger during drilling may cause it to stop turning. When this occurs, lift the auger to reduce the drilling load on the motor, and allow drilling debris to be augered out of the hole and resume drilling.

PARTS INFORMATION



PARTS LIST

1	Left Side Handle	37	Gear Sleeve
2	Supporting Rack	38	Gear
3	Right Side Handle	39	Upper Flange
4	Screw	40	Spring
5	Drill Bit	41	Spring Flange
6	Bolt	42	Nut
7	Pin	43	Gear Box
8	Screw	44	Oil-proof Cover
9	Washer	45	Lock Spring
10	Left Safety Board	46	Bearing
11	Right Safety Board	47	Spindle
12	Nut	48	Woodruff Key
13	Washer	49	Gear
14	Spring Washer	50	Lock Spring
15	Screw	51	Bearing
16	Cable	52	Gear Spindle
17	Cable Jacket	53	Gear
18	Strain Relief	54	Lock Spring
19	Screw	55	oil-proof Paper
20	Switch	56	Middle Cover
21	Switch Button	57	Washer
22	Capacitor	58	Spring Washer
23	Left Handle	59	Rotor
24	Right Handle	60	Bearing
25	Screw	61	Bearing Cover
26	Rubber Circle	62	Wind-proof Circle
27	Bearing	63	Screw
28	Gear Spindle	64	Stator
29	Woodruff Key	65	Housing
30	Gear	66	Carbon Brush
31	Bearing	67	Carbon Brush Holder
32	Bearing	68	Rear Cover
33	Woodruff Key	69	Screw
34	Gear Spindle	70	Safety Cover
35	Down Flange	71	Connection Wire
36	Friction Piece		

NOTE: Should your appliance need replacement after extended use, do not discard it with the household rubbish but dispose of it in an environmentally safe way. Waste produced by electrical machine items should not be handled like normal household rubbish. Please recycle where recycle facilities exist. Check with your Local Authority or retailer for recycling advice.

PLEASE READ THE FOLLOWING CAREFULLY

THE MANUFACTURER AND/OR DISTRIBUTOR HAS PROVIDED THE PARTS LIST AND ASSEMBLY DIAGRAM IN THIS MANUAL AS A REFERENCE TOOL ONLY. NEITHER THE MANUFACTURER OR DISTRIBUTOR MAKES ANY REPRESENTATION OR WARRANTY OF ANY KIND TO THE BUYER THAT HE OR SHE IS QUALIFIED TO MAKE ANY REPAIRS TO THE PRODUCT, OR THAT HE OR SHE IS QUALIFIED TO REPLACE ANY PARTS OF THE PRODUCT. IN FACT, THE MANUFACTURER AND/OR DISTRIBUTOR EXPRESSLY STATES THAT ALL REPAIRS AND PARTS REPLACEMENTS SHOULD BE UNDERTAKEN BY CERTIFIED AND LICENSED TECHNICIANS, AND NOT BY THE BUYER. THE BUYER ASSUMES ALL RISK AND LIABILITY ARISING OUT OF HIS OR HER REPAIRS TO THE ORIGINAL PRODUCT OR REPLACEMENT PARTS THERETO, OR ARISING OUT OF HIS OR HER INSTALLATION OF REPLACEMENT PARTS THERETO.

Record Product's Serial Number Here: _____

Note: If product has no serial number, record month and year of purchase instead.

Note: Some parts are listed and shown for illustration purposes only and are not available individually as replacement parts.



SAVE THESE INSTRUCTIONS.

Questions, problems, missing parts?



Before returning to your retailer, our exceptional customer service is here to help.

Call Us: 909.628.0880

Email Us: customer@xtremepowerusa.com

Hours of Operation: 9am - 4pm (Monday - Friday)

PRODUCT MADE IN CHINA