



How to install Quarter Round

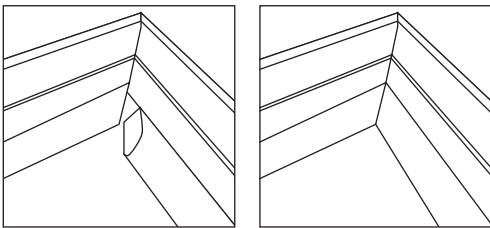
We are glad you have chosen to finish off your flooring installation with one of Performance Accessories' quarter rounds. In a few simple steps, we will have you installing it like a pro.

QUARTER ROUND

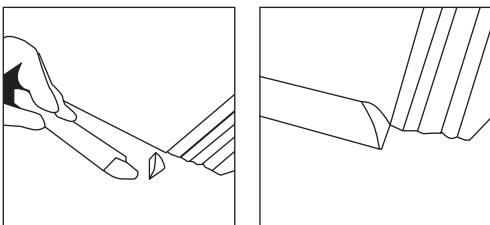
1. Measure the length of the wall where the quarter round will be installed.
2. Cut the quarter round with a miter saw, circular saw or hand saw to the necessary length.
3. Place the quarter round against the wall or wallbase and test the fit.
4. Nail the quarter round into the wall or wallbase with finishing nails.
5. Fill nail holes with coordinating putty

WATERPROOF QUARTER ROUND

1.) When adding quarter round molding to a four-cornered room, all cuts will be at a 45-degree angle except for any returns at doorways or openings. Using a miter box and saw, make your 45-degree angle cut then measure for total length, adding the next 45-degree angle at the end of the quarter round. When installing, at each 45-degree joint, add a bead of 100% silicone to keep water from penetrating the joint.



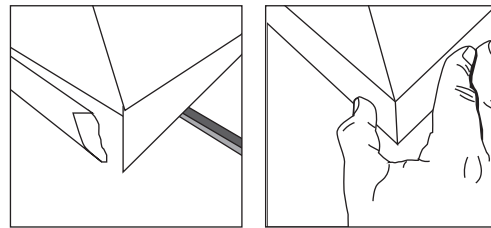
2.) Make return joints where the baseboard meets the door trim. Every room has at least one door opening, when the quarter round comes up to the door frame, run the molding to the frame with a 45-degree angle back cut at the frame. Just make sure the return joint is at a perfect 90 degrees. Now cut your small return piece and apply a bead of Silicone.



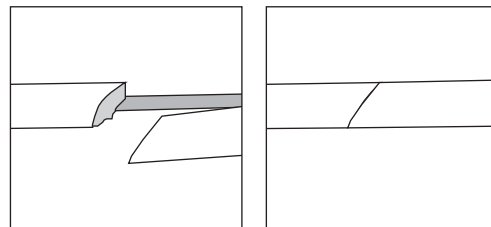
Tools needed to get started:



3.) If you must wrap the molding around any abutments in the wall using a miter joint, you will cut the angles in the exact opposite way that you did in Step 1. That means the angle begins at the corner/curve in the wood and runs into the center of the piece of molding at a 45-degree angle. Remember some angle's may be different, some other common angles are 21.5* and 33.5*. Remember at all joints to apply a bead of Silicone.



4.) Splice together any pieces of molding with two 45-degree cuts that run in different directions. These cuts should fit together tightly and most likely will not be noticed if they are correctly done.



5.) Nail the molding to the baseboard at an angle using #6 or #8 bright-finish nails and set each nail with a small nail set. Nail every 8". Avoid puncturing rubber gasket attached to product.



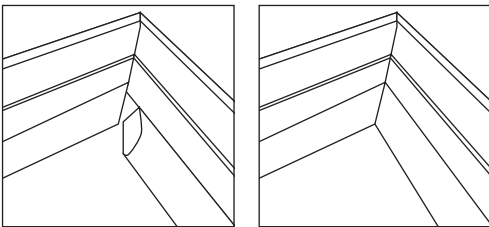
How to install Quarter Round

WATERPROOF QUARTER ROUND (CONITUNED)

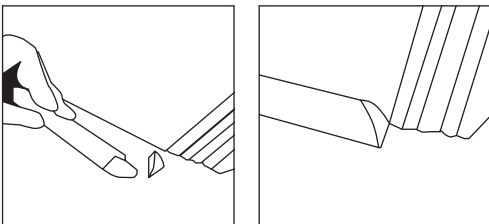
6.) Fill each nail hole with wood putty. If necessary, you can fill the wood joints with putty, but a clean and careful cutting job should eliminate the need for this step.

STANDARD QUARTER ROUND WITH 100% SILICONE

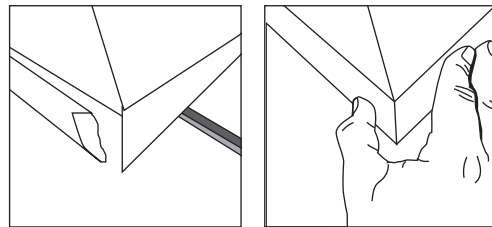
1.) When adding quarter round molding to a four-cornered room, all cuts will be at a 45-degree angle except for any returns at doorways or openings. Using a miter box and saw, make your 45-degree angle cut then measure for total length, adding the next 45-degree angle at the end of the quarter round. When installing, at each 45-degree joint, add a bead of 100% silicone to keep water from penetrating the joint.



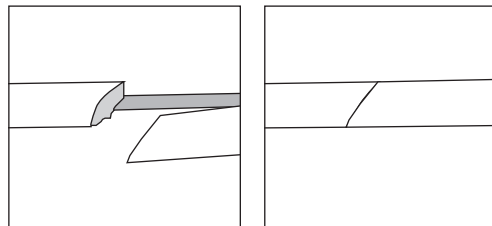
2.) Make return joints where the baseboard meets the door trim. Every room has at least one door opening, when the quarter round comes up to the door frame, run the molding to the frame with a 45-degree angle back cut at the frame. Just make sure the return joint is at a perfect 90 degrees. Now cut your small return piece and apply a bead of Silicone. Pics 3 & 4



3.) If you must wrap the molding around any abutments in the wall using a miter joint, you will cut the angles in the exact opposite way that you did in Step 1. That means the angle begins at the corner/curve in the wood and runs into the center of the piece of molding at a 45-degree angle. Remember some angle's may be different, some other common angles are 21.5* and 33.5*. Remember at all joints to apply a bead of Silicone.



4.) Splice together any pieces of molding with two 45-degree cuts that run in different directions. These cuts should fit together tightly and most likely will not be noticed if they are correctly done.



5.) Nail the molding to the baseboard at an angle using #6 or #8 bright-finish nails and set each nail with a small nail set. Nail every 8".

6.) Fill each nail hole with wood putty. If necessary, you can fill the wood joints with putty, but a clean and careful cutting job should eliminate the need for this step.