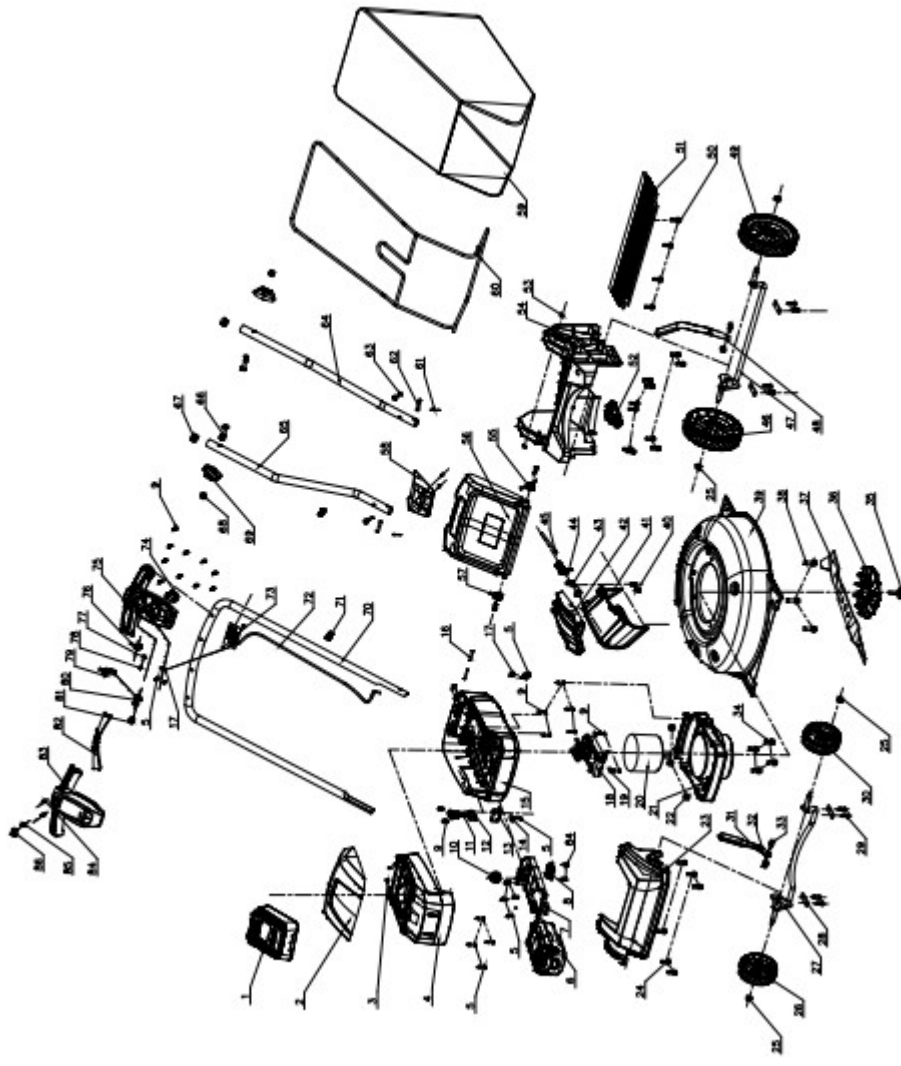


EXPLODED VIEW AND SPARE PART LIST



Item	Stock#	Description	Qty
1	202470005	Charger assembly	1
2	203010895	Battery pack outer upper cover	1
3	302060036	Plastic plug	2
4	203010896	Battery pack cover holder	1
5	303010358	Screw ST4.2X14	17
6	202460007	40V 4.0Ah battery pack assembly	1
7	202460009	40V battery pack	1
8	203021266	Charger cartridge holder	1
9	303010354	Screw ST4.2X18	18
10	303130355	The battery pack spring	1
11	203021389	Secure Key	1
12	203010897	Switch upper cover	1
13	301100055	Switch	1
14	303042048	Flat washer	1
15	203021390	Battery pack cover	1
16	303100086	Battery pack cover shaft	2
17	203020047	The cable clamp	1
18	301011024	40V controller assembly	1
19	303042104	Flat washer	2
20	301030079	600W Motor (40VDC)	1
21	203021391	Motor base	1
22	303010357	Hex lock nut M8	3
23	203050590	Front cover	1
24	303010332	Screw ST6.3*20	16
25	303010359	Hex lock nut M8	4

Item	Stock#	Description	Qty
26	203050591	7" right wheel	1
27	303181207	Front wheel shaft welding	1
28	303071420	Wheel clamp	4
29	303010355	Screw ST6.3*20	10
30	203050592	7" left wheel	1
31	303071464	Spring assembly	1
32	303030032	Hex lock nut M6	4
33	303010360	Hexagon flange bolt M6*14	4
34	303020635	Bolt M6*12	4
35	203021392	Blade bolt Nylon cover	1
36	203021393	Motor fan	1
37	303240634	17" blade	1
38	303020627	Hexagon flange bolt M8*25mm	1
39	303181285	Deck	1
40	303020468	Bolt M6*10mm	2
41	203050593	Side discharge frame	1
42	203050594	Side discharge coverplate	1
43	303160833	Side discharge holder	1
44	303130335	Side discharge torsional spring	1
45	303160410A	Torsional spring pin	1
46	203050595	8" right wheel	1
47	303181203	Rear axle welding	1
48	303071465	Spring assembly	1
49	203050596	8" left wheel	1
50	303010351	Hexagon screw ST6.3*14	4

Item	Stock#	Description	Qty
51	302080074	Plastic barrier	1
52	203050597	Wind deflector	1
53	303030137	Square nut M6	2
54	203050598	Back seat	1
55	303130336	Back cover left torsion spring	1
56	203050599	Rear cover	1
57	303130337	Back cover right torsion spring	1
58	203050600	Rear blanking cap	1
59	302120068	Collection bag	1
60	303081195	Grass collecting support	1
61	303121005	Cotter	2
62	303160807	Axis pin M6x35	2
63	303020558	Flange bolts M6*35	2
64	303081196	Lower left tube	1
65	303081197	Lower right tube	1
66	303020140	T-bolt M8*50	2
67	302060037	End plug	2
68	303030026	Thickened plain nut M8	2

Item	Stock#	Description	Qty
69	203021394	Knob	2
70	303081198	Upper tube	1
71	203050601	Clip	2
72	306040026	Connecting cable	1
73	306040027	40V Operation plate	1
74	301100046	Switch	1
75	203050602	Lower switch box	1
76	303130124	Spring	1
77	303042019	Flate washer	1
78	303010092	Screw ST4.2X10	1
79	203010655	Swith pushing pod	1
80	203021102A	Switch button	1
81	303130013	Spring	1
82	203021395	Right switch trigger	2
83	203050603	Upper switch box	1
84	303010237	Screw ST4.2X10-C	4
85	303130125	Anti self locking button spring	1
86	203010898	Anti self locking button	1