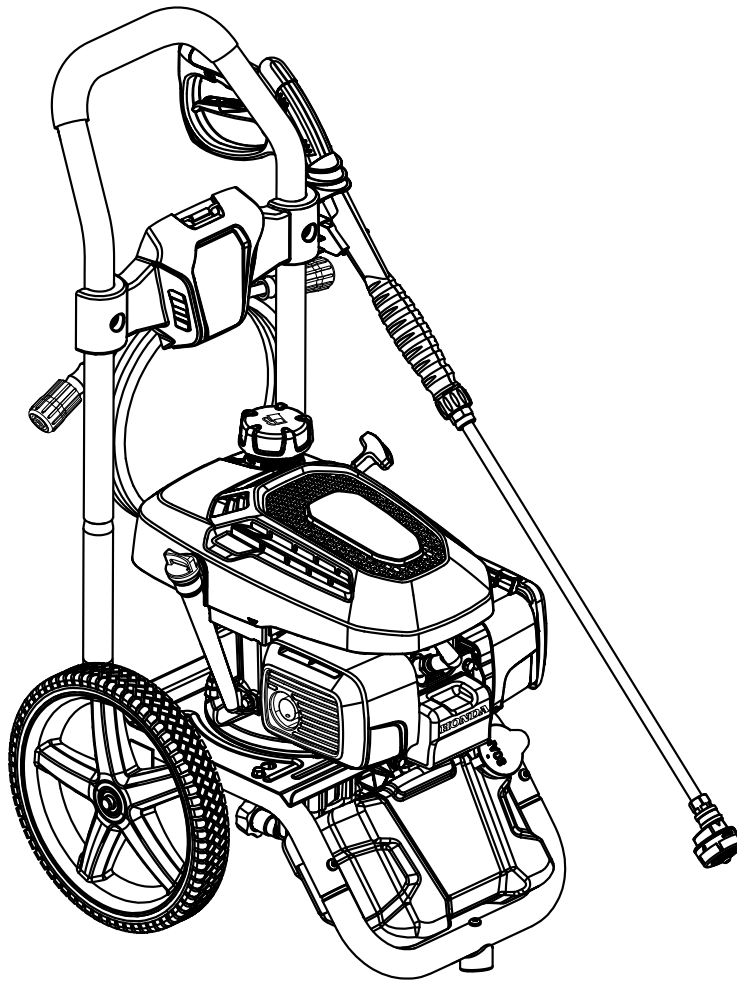


REPLACEMENT PARTS LIST

BRAND RYOBI		DESCRIPTION 3200 PSI Pressure Washer
MODEL NO. RY803023	MFG. NO. 090079512	



TECHTRONIC INDUSTRIES POWER EQUIPMENT

P.O. Box 1288, Anderson, SC 29622 ■ 1-800-525-2579 ■ www.ryobitools.com

998000584

6-10-21 (Rev:01)

The model number and manufacturing location will be found on a label attached to the product. Always mention this information in all communications regarding this product and when ordering parts.

**RY803023****PARTS LIST**

KEY NO.	PART NO.	DESCRIPTION	QTY.
1	See Note A	Engine	1
2	678041007	Output Shaft Key (40 mm)	1
3	314961001	Pump (Inc. Key Nos. 50-55)	1
4	678169004	Thermal Release Valve	1
5	310703012	Main Frame Assembly (Left, Inc. Key No. 30)	1
6	310704013	Main Frame Assembly (Right, Inc. Key Nos. 28-29)	1
7	310742028	Front Frame Assembly with Wear Pad (Inc. Key Nos. 19-21 & 23)	1
8	638662037	Engine Plate (Inc. Key No. 40)	1
9	308451053	Wheel	2
10	308638060	Handle Assembly	1
11	518790040	Performance Panel with Wand Holder (Inc. Key No. 37)	1
12	308350003	Hose Holder Strap	1
13	580875014	Soap Tank (Inc. Key No. 32)	1
14	310650004	Soap Tank Cap	1
15	570728009	Chemical Siphon Tube	1
16	660962003	Bolt (M8 x 60 mm, Hex Hd.)	3
17	678774002	Nut (M8 x 1.25 mm)	3
18	661505020	Bolt (M6 x 16 mm)	4
19	661503015	Screw (M6 x 48 mm, T30 Torx Pan Hd.)	3
20	638128004	Washer (1/4 in.)	3
21	678610006	Nut (M6)	5
22	679957001	Cap Nut	2
23	570554002	Wear Pad	1
24	661834004	Bolt (M6 x 42 mm, Torx Pan Hd.)	2
25	308835116	Hose (35 ft.)	1
26	308760085	Trigger Handle (Inc. Key Nos. 38 & 46-47)	1
27	308506014	Wand	1
28	941588918	Data Label	

KEY NO.	PART NO.	DESCRIPTION	QTY.
29	940676024	Warning Label	1
30	940947003	Combustion Warning Label	1
31	940779368	Danger Label	1
32	940779365	Detergent Tank Label	1
33	961454002	Oil Dipstick Hangtag	1
34	940872003	E85 Label	1
35	940680073	Hot Surface Label	1
36	918016075	Nozzle Hangtag	1
37	940779366	Performance Label	1
38	940851520	Trigger Handle Logo Label	1
39	940851346	Danger Hangtag	1
40	940871016	Add Oil Label	1
41	918016074	Quick Start Hangtag	1
42	940779367	Recoil Label	1
43	940803288	EMC ICES-2/NMB-2 Label	1
44	941486008	Inquiries Label	1
45	310448056	5-in-1 Nozzle	1
46	940654083	Trigger Handle Warning Label (ENG)	1
47	940904018	Trigger Handle Data Warning Label	1
48	940654228	Trigger Handle Warning Label (FR/SP)	1
49	308421004	Spring Clip Assembly	2
50	308662001	Filter Screen (Pump Inlet)	1
51	310924003	Pump Unloader Valve	1
52	310993003	Collar	1
53	308862003	Outlet Tube	1
54	642058001	Spindle	1
55	308452002	Detergent Suction Kit	1
	Not Shown:		
	998000582	Operator's Manual (120900285)	
	998000583	Quick Start Guide	

Note A: Techtronic Industries Power Equipment will not provide engines as replacement parts. Engines are covered through the engine manufacturer's warranty. Consult the accompanying engine manual or contact our service department for assistance.