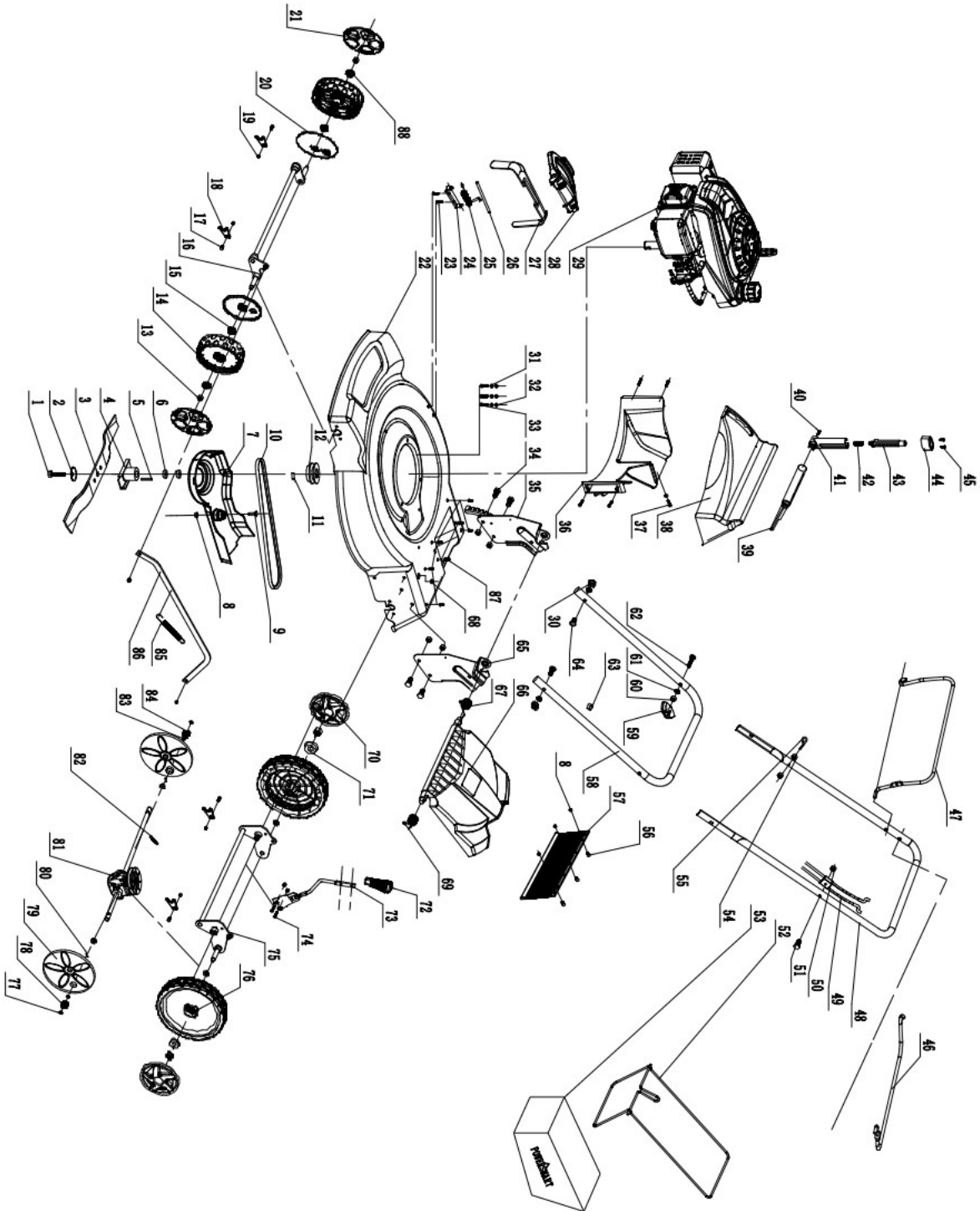


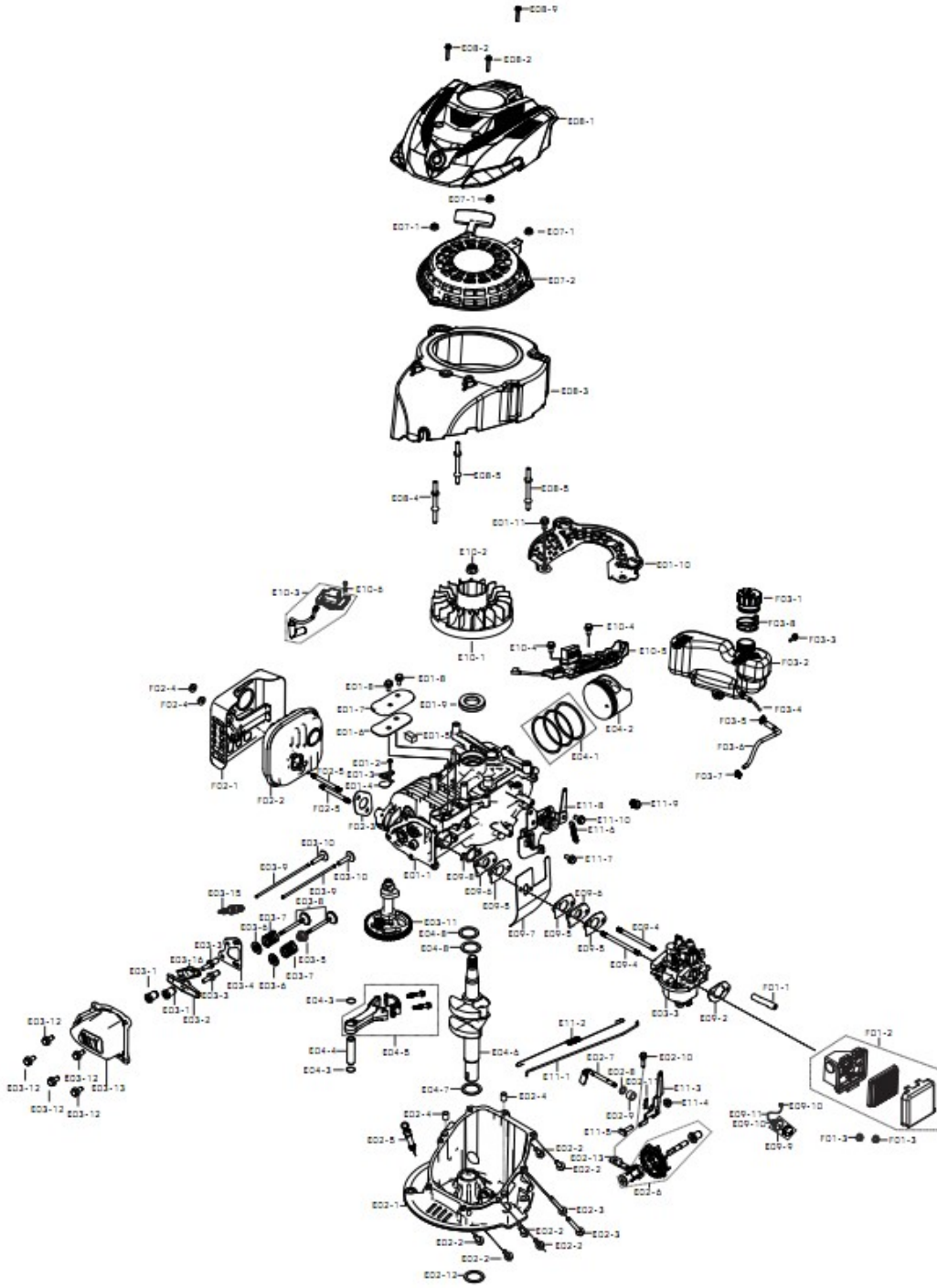
EXPLODED VIEW AND PARTS LIST



Item	Stock#	Description	Qty
1	303240514	Blade Bolt	1
2	303043023	Butterfly washer	1
3	303070862	22" New Blade	1
4	303180808	Adapter	1
5	303110023	Flat key	1
6	303160550A	Spacer bush	1
7	203050146A	Belt protection cover	1
8	303030087	Flange nut	4
9	303020341	step bolt	1
10	302040074	Belt	1
11	303020471	Screw	1
12	303160454	Small pulley	1
13	303030077	Flange Locknut	8
14	302090173	Rear wheel	2
15	303100065	plastic bearing	2
16	303180654C	Front wheel Ax	1
17	303020276	Hex washer screw	4
18	303060115	rear axle card	4
19	303030032	Locknut	8
20	203010666	Defensive grass cover	2
21	203050260	Rear wheel cover	2
22	303070698	22" Deck (186c red)	1
23	303020468	Washer	2
24	303160456	Side Discharge Bracket	1
25	303130335	Torsional Spring	1
26	303160410A	Spring Pin shaft	1
27	203050148	Side discharge chute	1
28	203050147	Side discharge deflector	1
29	303190315	Engine	1
30	303030036	Locknut	2
31	303041022	Washer	3
32	303042023	Falt washer	3
33	303020265	Hex washer screw	3
34	303020332	step bolt	4
35	303210017C	Right Junction Plate	1
36	203040018B	Blocking Plate	1
37	303010185	Tapping screw	1
38	203050154A	Rear discharge cover	1
39	203050156A	Rear block plate	1
40	303010164	Tapping screw	10
41	203050155	rear discharge handle	1
42	303160460	handle press spring	1
43	203010596	Link lever	1
44	203010597	Handle cover	1

Item	Stock#	Description	Qty
45	303010095	tapping screw	2
46	303080630	Self-propelled drive bar	1
47	303080490	Blade control bar	1
48	303080489A	upper tube	1
49	303200079A	Brake Control Cable	1
50	303030025	cap nut	2
51	303020308	outer hexagon bolt	1
52	303180656A	Straw Basket	1
53	302120009	Straw Bag	1
54	303030065	plain nut	1
55	303160531A	Pull hook	1
56	303020282	outer hexagon bolt	3
57	302080050A	Rubber	1
58	303071263	lower tube	1
59	203020865A	Knob	2
60	303030026	thicken plain nut	2
61	303043010	Saddle washer	4
62	303020126	step bolt	2
63	203040007	Cable Clip	1
64	303020146	step bolt	2
65	303070702B	Left Junction Plate	1
66	203050153	Side discharge deflector	1
67	303160461	Right Torsional Spring	1
68	302060025	cable rubber stopper	1
69	303160464	Left Torsional Spring	1
70	203050447	11.5" wheel cap	2
71	303100002	deep groove ball bearing	6
72	203070079	Adjusting handle	1
73	303210033	Adjusting handle welding	1
74	303020339	outer hexagon bolt	2
75	303180655B	rear axle shaft seaming	1
76	203040021A	11.5" self- propelled wheel assembly	2
77	303050007	closing ring	4
78	303160471A	Drive gear Left	1
79	203010806A	11.5" wheel cover	2
80	303123017A	cylindrical pin	2
81	303240335	22" Drive assembly	1
82	303160465A	Self-propelled spring	1
83	303043061	Flat washer	2
84	303160470A	Drive gear Right	1
85	303130126	Connecting rod tension spring	1
86	303160457C	Go up and down Link lever	1
87	303020248	Triangular head bolt	2
88	203021115	Shaft sleeve	2

Engine explode view and part list



Item	Stock#	Description	Qty
E01-1	11310-Z970110-00A0	CRANKCASE SUBASSEMBLY.	1
E01-2	90103-0410-51	BOLT	1
E01-3	12045-Z240110-00A0	Reed valve limit plate	1
E01-4	11321-Z180110-00A0	PIECE, BREATH	1
E01-5	11331-Z180110-00A0	STRAINER, BREATH GROOVE	1
E01-6	11332-Z180110-00A0	GASKET, BREATH GROOVE	1
E01-7	11333-Z180110-00A0	PLATE, BREATH GROOVE COVER	1
E01-8	90007-0612-A1	BOLT	2
E01-9	90682-Z240110-0000	SEAL, OIL	1
E01-10	19340-Z870120-0000	SHIELD, LOWER	1
E01-11	90007-0612-A1	BOLT	1
E02-1	11411-Z870130-00A0	COVER, CRANKCASE	1
E02-2	90007-0620-A1	BOLT	6
E02-3	90007-0655-A1	BOLT	2
E02-4	90502-0818-00	PIN	2
E02-5	15010-Z870210-Q2A0	DIPSTICK SUBASSEMBLY, OIL	1
E02-6	16400-Z870120-0000	GEAR ASSY, GOVERNOR	1
E02-7	16061-Z870120-0000	ARM, GOVERNOR	1
E02-8	90412-Z870210-0000	Flat washer	1
E02-9	90682-Z030210-0000	SEAL, OIL	1
E02-10	90007-0612-A1	BOLT	1
E02-11	90501-Z010110-0000	PIN	1
E02-12	90682-U090110-0000	SEAL, OIL	1
E02-13	16013-Z030120-0000	PLATE, GOVERNOR SPINDLE COMPRESSION	1
E03-1	97002-Z240110-0000	Valve control assembly	2
E03-2	14311-Z870110-0000	ROCKER, VALVE	1
E03-3	14313-Z240110-0000	BOLT, ROCKER SHAFT	2
E03-4	14091-Z870110-00A0	PLATE SUBASSEMBLY, LIFTER STOPPER	1
E03-5	12101-Z810210-0000	GUIDE, SEAL	1
E03-6	12112-Z350110-00A0	SEAT, VALVE SPRING	2
E03-7	12103-Z010110-0000	SPRING, VALVE	2
E03-8	12110-Z870110-00A0	VALVES SET	1
E03-9	14071-Z340110-0000	LIFTER, VALVE	2
E03-10	14081-Z800110-0000	TAPPET, VALVE	2
E03-11	14200-Z870110-00A0	CAMSHAFT ASSY.	1
E03-12	90007-0612-A1	BOLT	5
E03-13	12411-Z970110-00A0	COVER, CYLINDER HEAD	1
E03-15	30010-Z180110-00A0	PLUG, SPARK	1
E03-16	14311-Z870210-0000	ROCKER, VALVE	1
E04-1	13200-Z970110-00A0	RING ASSY, PISTON	1
E04-2	13111-Z970110-00A0	PISTON	1
E04-3	13122-Z350110-00A0	CLIP, PISTON PIN	2
E04-4	13121-Z970110-00A0	PIN, PISTON	1
E04-5	13010-Z870110-00A0	ROD, CONNECTING	1
E04-6	13300-Z870810-0000	CRANKSHAFT ASSY.	1
E04-7	90408-Z030210-0000	WASHER, FLAT	1
E04-8	90408-Z240210-00A0	WASHER, FLAT	2
E07-1	90305-0600-31	NUT	3
E07-2	28200-Z180130-00D0	STARTER ASSY, RECOIL	1

Item	Stock#	Description	Qty
E08-1	80001-Z870110-Q200	HOUSING, ENGINE	1
E08-2	90107-0516-01	SCREW	2
E08-3	28110-Z870130-0000	SHROUD	1
E08-4	28001-Z870110-0000	STUD	1
E08-5	28001-Z870210-0000	STUD	2
E08-9	90255-0520-51	BOLT	1
E09-2	17001-Z030120-0000	GASKET, AIR CLEANER	1
E09-3	16100-Z970110-00A9	CARBURETOR ASSY.	1
E09-4	90204-Z250310-00A0	BOLT	2
E09-5	16001-Z010110-0000	GASKET, CARBURETOR	3
E09-6	16003-Z250210-0000	PLATE, CARBURETOR INSULATOR	2
E09-7	16004-Z870110-0000	GASKET, INSULATOR PLATE	1
E09-8	16004-Z870210-0000	GASKET, INSULATOR PLATE	1
E09-9	16210-Z250120-00A0	VALVE, STARTING RICHED	1
E09-10	90685-0700-01	CLAMP	2
E09-11	16211-Z870110-0000	TUBE, STARTING RICHED VALVE	1
E10-1	13510-Z870110-0000	FLYWHEEL SUBASSEMBLY	1
E10-2	13501-Z010110-0000	NUT, FLYWHEEL	1
E10-3	30400-Z340410-02A0	COIL, IGNITION	1
E10-4	90007-0612-A1	BOLT	2
E10-5	45200-Z970110-00A0	BRAKE ASSY.	1
E10-6	90007-0625-A1	BOLT	1
E11-1	16062-Z870110-0000	ROD, GOVERNEOR	1
E11-2	16012-Z870110-0000	SPRING, THROTTLE VALVE RETURNING	1
E11-3	16070-Z870110-0000	SUPPORT SUBASSEMBLY, GOVERNOR	1
E11-4	90305-0600-31	NUT	1
E11-5	16072-Z010110-0000	BOLT, GOVERNOR SUPPORT	1
E11-6	16063-Z870110-0000	SPRING, GOVERNOR	1
E11-7	90007-0612-A1	BOLT	1
E11-8	16561-Z240110-00A0	PLATE SUBASSEMBLY, THROTTLE CONTROL BOTTOM	1
E11-9	90684-Z250110-00A0	CLIP	1
E11-10	90007-0620-A1	BOLT	1
F01-1	17004-Z870110-0000	TUBE, BREATHER	1
F01-2	17100-Z870110-0000	CLEANER, AIR	1
F01-3	90305-0600-31	NUT	2
F02-1	18130-Z870110-00A0	COVER, MUFFLER OUTER	1
F02-2	18100-Z870110-00A0	MUFFLER ASSY.	1
F02-3	18001-Z870110-00A0	GASKET, EXHAUST OUTLET	1
F02-4	90310-0600-31	NUT	2
F02-5	90207-Z970110-0000	BOLT	2
F03-1	16730-Z620210-LKD0	COVER, FUEL TANK	1
F03-2	16620-Z870110-Q299	TANK, FUEL	1
F03-3	90007-0625-A1	BOLT	1
F03-4	16652-Z030110-00A0	STRAINER, FUEL	1
F03-5	90685-1000-01	CLAMP	1
F03-6	90686-Z870110-0000	TUBE, FUEL	1
F03-7	90685-0700-01	CLAMP	1
F03-8	16744-Z620120-0000	CHAIN PROOF OFF, FUEL TANK COVER	1