



With your inspiring rating, COSTWAY will be more consistent to offer you EASY SHOPPING EXPERIENCE, GOOD PRODUCTS and EFFICIENT SERVICE!

Mit Ihrer inspirierenden Bewertung wird COSTWAY konsistenter sein, um Ihnen EIN SCHÖNES EINKAUFSERLEBNIS, GUTE PRODUKTE und EFFIZIENTEN SERVICE zu bieten!

Avec votre évaluation inspirante, COSTWAY continuera à fournir une EXPÉRIENCE D'ACHAT PRATIQUE, des PRODUITS DE QUALITÉ et un SERVICE EFFICACE !

Con su calificación inspiradora, COSTWAY será más consistente para ofrecerle EXPERIENCIA DE COMPRA FÁCIL, BUENOS PRODUCTOS y SERVICIO EFICIENTE.

Con la tua valutazione incoraggiante, COSTWAY sarà più coerente per offrirti ESPERIENZA DI ACQUISTO FACILE, BUONI PRODOTTI e SERVIZIO EFFICIENTE!

Dzięki twojej opinii COSTWAY będzie mógł oferować jeszcze WYGODNIEJSZE ZAKUPY, LEPSZE PRODUKTY i SPRAWNIEJSZĄ OBSŁUGĘ KLIENTA.

US office: Fontana

UK office: Ipswich

DE office: FDS GmbH, Neuer Höltigbaum 36, 22143 Hamburg, Deutschland

FR office : 26 RUE DU VERTUQUET, 59960 NEUVILLE EN FERRAIN, FRANCE



USER'S MANUAL

7 FIN OIL FILLED RADIATOR

EP24918US



WARM TIPS : This product is recommended for use in 108-162 square feet of the room.

IMPORTANT INSTRUCTIONS

When using this appliance, basic precautions should always be followed to reduce the risk of fire, electric shock and injury to persons, including the following:

CAUTION- High temperature, keep electrical cords, drapery, and other furnishings at least 3 feet (0.9m) from the front of the heater and away from the side and rear.

1. Read all instructions before using the heater.
2. Remove the unit from its packaging and check to make sure it is in good condition before using.
3. Do not let children play with parts of the packing (such as plastic bags).
4. Check the household voltage to ensure it matches the heater's rated specification.
5. Check the power cord and plug carefully before use to make sure that they are not damaged.
6. Before unplugging the power cord, be sure to turn off the power. When touching the unit, be sure your hands are dry to prevent from receiving an electric shock.
7. Do not use near to, or point the heater to, furniture, curtains, or other inflammable objects. Keep combustible materials, such as furniture pillows, bedding, papers, clothes, and curtains at least 3 feet (0.9m) from the front of the heater and keep them away from the sides and rear.
8. Do not block air intakes or exhaust in any manner to prevent a possible fire.

9. Extreme caution is necessary when any heater is used by, or near children or invalids, and whenever the heater is left operating and unattended.
10. Always unplug the heater when not in use.
11. Prevent water from getting into the housing of the heater during operation or in storage. Always store in a dry area free from potential moisture.
12. Do not use in places where gasoline, paint, or other inflammable liquids are used or stored.
13. This heater is not intended for use in bathrooms, laundry areas, or similar indoor locations. Never locate the heater where it may fall into a bath tub or other body of water.
14. Do not run the cord under carpeting. Do not cover the cord with throw rugs, runners, or the like. Arrange the cord away from traffic areas and where it will not be tripped over.
15. Do not use on soft surfaces, like a bed, where openings may become blocked.
16. Do not operate any heater with a damaged cord, damaged plug, after the heater malfunctions, or if it has been dropped or damaged in any manner. Return the heater to an authorized service facility for examination, electrical or mechanical adjustment, or repair.
17. Do not insert or allow foreign objects to enter any ventilation or exhaust opening as this may cause an electric shock, fire, or damage the heater.
18. This heater is hot when in use. To avoid burns, do not let bare skin touch the hot surfaces. If provided, use handles when moving this heater.
19. Use this heater only as described in this manual. Any other uses not recommended by the manufacturer may cause fire, electric shock, or personal injury and may void the warranty.
20. Always plug heater directly into a wall outlet/receptacle. Never use with

an extension cord or relocatable power tap (outlet/power strip)

21. Do not use outdoors.

22. To disconnect heater, turn controls to off, then remove plug from outlet.

WARNING: RISK OF FIRE Keep combustible material such as furniture, paper, clothes, and curtains at least 3 feet (0.9m) from the front of the heater and keep

23. them away from the side and rear when the heater is plugged in.

24. Do not place any objects such as furniture, papers, clothes, and curtains closer than 3 feet to the front of the heater and keep them away from the sides and rear when the heater is plugged in.

25. Do not place the heater near a bed because objects such as pillows or blankets can fall off the bed and be ignited by the heater.

26. Never clean this heater while it is plugged in. Do not immerse in water. To disconnect, turn control to OFF, then remove the plug from the outlet by grasping it and pulling it from the outlet. Never yank on the cord.

27. This appliance is not intended for use by persons (including children) with reduced physical, sensory or mental capabilities, or lack of experience and knowledge, unless they have been given supervision or instruction concerning use of the appliance by a person responsible for their safety.

28. Children should be supervised to ensure that they do not play with the appliance

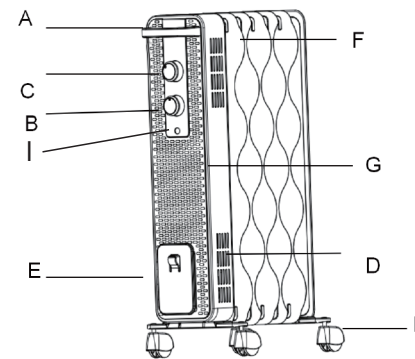
29. Do not use with wireless plug adapter or outlet that allows control remotely.

SAVE THESE INSTRUCTIONS

SPECIFICATIONS

MODEL NO.	FINS	RATED VOLTAGE	RATED POWER
EP24918US-BK/WH	7	120V 60Hz	1500W

STRUCTURE AND PARTS

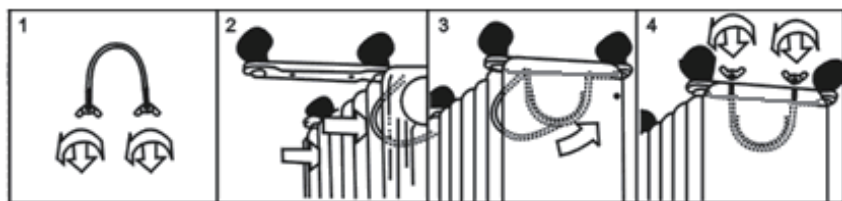


- A – Carry handle
- B – Power switch
- C – Thermostat knob
- D – Exhaust openings
- E – Cord wrap
- F – Radiator fins
- G – Front cover
- H – Caster wheels
- I – Pilot light

ASSEMBLY INSTRUCTIONS

The heater is packaged with the feet unattached. You must attach them before operating the heater.

WARNING: Do not operate without feet attached. Do operate the heater only in upright position (feet on the bottom, controls on the top), any other position could create a hazardous situation.



1. Place the radiator body upside-down on a scratch-free location, make sure it is stable and will not fall.

2. Screw off the wing nuts from the U-shaped bolt provided, attach the U-shaped bolt to the U-facing flange between first and second fins (near the front cover).

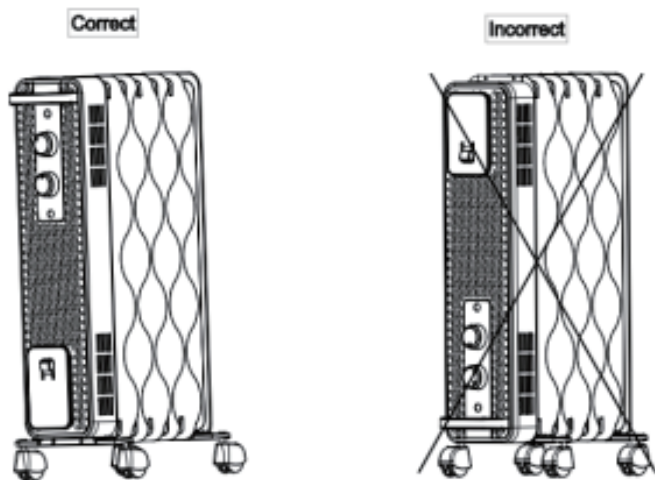
3. To attach the castor mounting plate to the radiator body, you should insert the threaded ends of the U bolt in the holes on the castor mounting plate.

4. Screw the wing nuts back to the U bolt and fasten the wing nut properly.

Note: do not over tighten, which may cause the damage of radiator flange.

5. Repeat 2, 3, and 4 on the rear of radiator for mounting of the rear Castors.

Note: the rear castors must be mounted between the end two fins.



INSTRUCTIONS FOR USE

1. Before using the heater make sure that it is on a flat and stable surface.

Damage may occur if it is placed on an incline or decline.

2. Set the power switch to 0 (OFF) position and the thermostat to MIN position. Then insert the plug into a socket-outlet well grounded.

3. Rotate the thermostat knob clockwise to MAX position and rotate the power switch of the heater as follows: LOW (1 power – 600 watts); MED (2 power – 900 watts); HIGH (3 power – 1500 watts); 0 for power off.

4. When your room reaches the desired temperature, now slowly rotate the thermostat knob counter clockwise until the clicks sound comes. The thermostat can now be left at this setting. As soon as the room temperature has dropped below the set temperature, the unit will switch on automatically until the set temperature has been reached again. In this way the room temperature remains constant with the most economical use of electricity.

5. If you want to change the room temperature setting, rotate the thermostat knob clockwise to raise the temperature, or counter clockwise to lower it.

6. This heater includes an overheat protection system that shuts off the heater when parts of the heater are getting excessively hot.

7. To completely shut the heater off, turn all the controls to OFF, and remove plug from the socket-outlet.

SAFETY FEATURES

This product has protection safeguards that shut off the product when parts become excessively hot or if it tips over. If the product shuts off, immediately turn the Control to the "OFF" position and unplug it from the electric outlet.

If tipped over:

Place the product on a flat, level, stable surface in order to prevent the product from tipping over again.

TIP: Always install and maintain at least one smoke detector in good operating condition on each floor of your home. Periodically check and/or replace the battery in your smoke detector with a new battery.

TROUBLE SHOOTING TIPS

If your heater shuts off unexpectedly or fails to operate, one of the above-mentioned safety features may have activated to prevent overheating.

- 1. Be sure the power cord is plugged into a working electrical outlet.**
- 2. Check your thermostat setting. The heater may be off because it has reached the desired temperature setting.**

MAINTENANCE

WARNING: ALWAYS UNPLUG THE CORD BEFORE MOVING OR SERVICING. DO NOT IMMERSE HEATER IN WATER!

WARNING: In case of malfunction or doubt, do not try to repair the radiator yourself. It may result in a fire hazard or electric shock.

CLEANING: IMPORTANT! DO NOT IMMERSE HEATER IN WATER! Clear the heater grills with the vacuum brush attachment on your vacuum cleaner. This will remove lint and dirt from the inside of the heater. **DO NOT ATTEMPT TO TAKE HEATER APART.** Clean the body of heater with a soft cloth.

CAUTION: Do not use gasoline, benzine, thinner, harsh cleaners, etc. as they will damage the heater. NEVER USE ALCOHOL OR SOLVENTS.

STORAGE: wind the cable round the bobbin, and then store the heater with these instructions in the original carton in a cool, dry place.