



# LAWN SWEEPER

Thank you for purchasing the **Right Hand™ Lawn Sweeper**. This User Guide is intended to provide you with guidelines to ensure that operation of this product is safe and does not pose risk to the user. Any use that does not conform to the guidelines described in this User Guide may void the limited warranty.

**Please read all directions before using the product and retain this guide for reference.** This product is intended for household use only. This product is not intended for commercial use.

This product is covered by a limited one-year warranty. Coverage is subject to limits and exclusions. See warranty for details.

## SAFETY PRECAUTIONS

**WARNING! Please read and understand all safety precautions, operating instructions, maintenance and storage instructions before operating this equipment. Failure to properly operate and maintain the lawn sweeper could result in injury to the operator or damage to the sweeper.**

- ❗ Do not allow bystanders to sit or stand on the sweeper at any time.
- ❗ Do not allow children to play on, stand upon, or climb on the sweeper. Children should not operate this unit at any time.
- ❗ Always inspect the sweeper before using to ensure it is in good working condition.
- ❗ Always ensure that all pieces are present and intact before attempting to assemble the product.

- ❗ Replace or repair damaged or worn parts immediately.
- ❗ Always check and tighten hardware and assembled parts before operation.
- ❗ Avoid large holes, ditches, or other hazards when using the sweeper.
- ❗ Be careful when operating the unit on steep slopes such as mounds or hills, the sweeper may tip over.
- ❗ Do not push close to creeks, cliffs, and roads.
- ❗ Always use caution when operating the sweeper or dumping hopper bag.
- ❗ Never tow the sweeper with a motorized vehicle.
- ❗ Always keep hands and feet clear from moving parts while operating the equipment.
- ❗ Always clear and keep work area clean when operating.
- ❗ Always wear safety gear, eye protection, gloves, and work boots when operating the sweeper.
- ❗ Do not push the sweeper near open flames for any reason. The hopper bag and the brushes can burn if they are near fire.
- ❗ Do not exceed the maximum capacity of the hopper bag, 7 cu. ft.
- ❗ Do not allow anyone to operate the sweeper without proper instructions.

## PRODUCT OVERVIEW

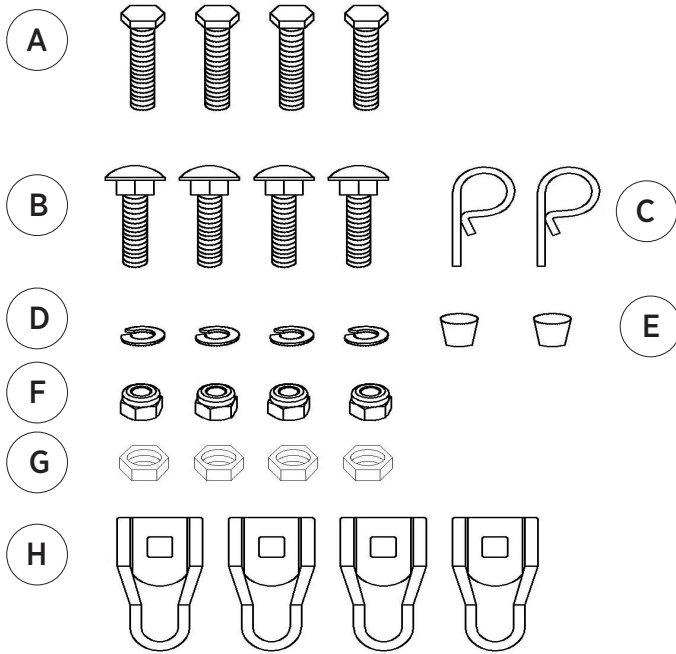


Parts	Descriptions
1. Handle	Pushes and moves sweeper
2. Hopper Bag	Holds up to 7 cu. ft. of leaves and other debris
3. Support Legs	Stabilizes load and sweeper
4. Wheels	Heavy duty 10" wheels
5. Brush Knob	Adjusts brush height

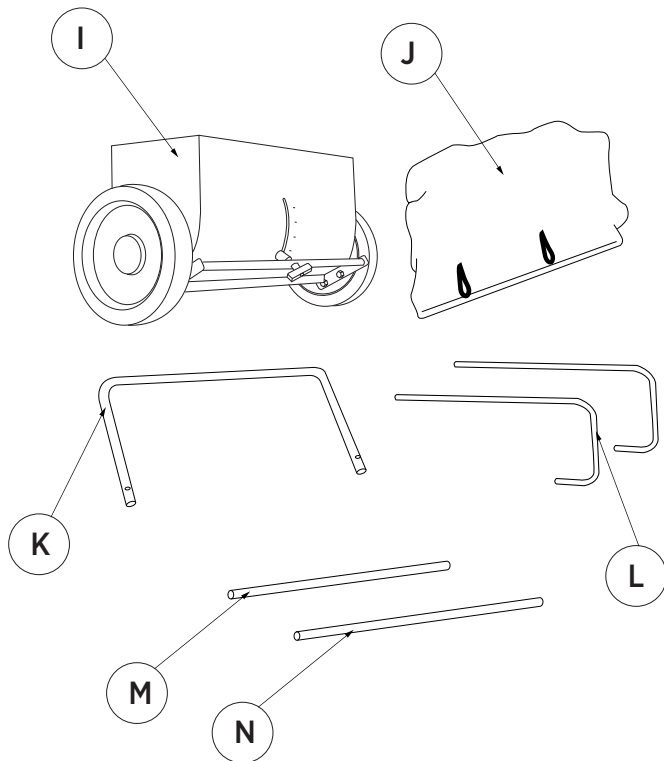
### Assembly Required

This product requires assembly before use. See "Assembly Instructions" section for directions. Because of the weight and/or size of the lawn sweeper, it is recommended that another adult be present to assist with the product assembly. **INSPECT ALL COMPONENTS** closely to make sure no components are missing or damaged.

# PACKAGE CONTENTS



REF.	QTY.	DESCRIPTION
A	4	M6x30 Hex Bolt
B	4	M6x30 Carriage Bolt
C	2	R Pin
D	4	Ø6 Lock Washer
E	2	Plastic Cap
F	4	M6 Lock Nut
G	4	M6 Hex Nut
H	4	Bag Rod Clips



REF.	QTY.	DESCRIPTION
I	1	Sweeper Assembly
J	1	Hopper Bag
K	1	Handle Frame
L	2	Support Leg
M	1	Short Bag Rod
N	1	Long Bag Rod

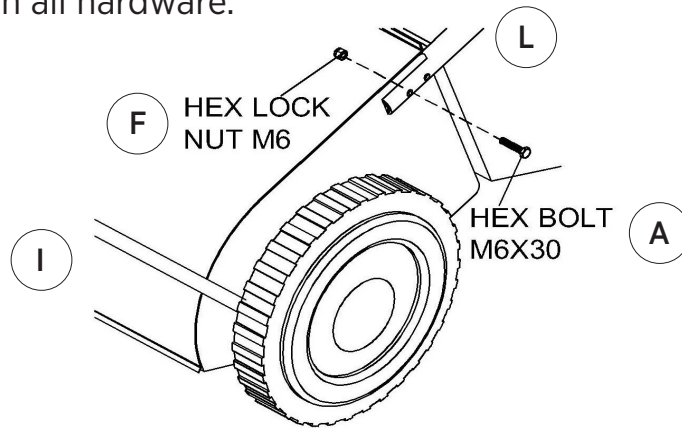
# ASSEMBLY INSTRUCTIONS

## TOOLS REQUIRED

- 2x Pliers
- 1x Screwdriver
- 1x 10 mm Wrench

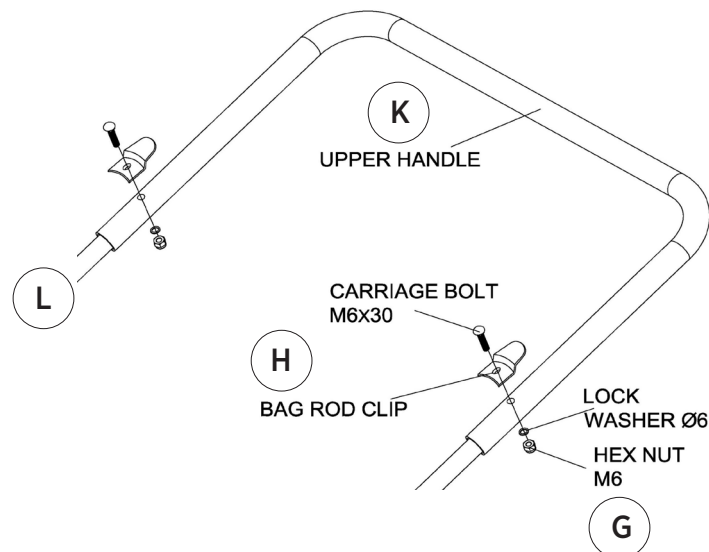
## STEP 1: Connect Support Legs to Sweeper Base

1. Connect the lower leg support (L) to the sweeper base (I) and secure it with two (2) M6 x 30 hex bolts (A) and M6 hex lock nuts (F).
2. Loosely tighten all hardware.



## STEP 2: Attach Handle to Support Legs

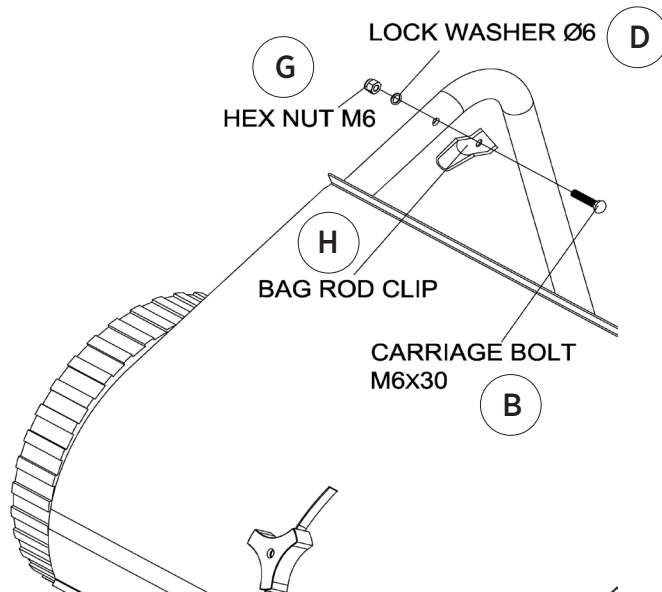
1. Attach the handle (K) to the support legs (L).
2. Align the holes in handle and support legs and put the bag rod clips (H) on top.
3. Secure with two (2) M6 x 30 carriage bolts (B), Ø6 lock washer (D) and M6 hex nut (G).
4. Now fully tighten all hardware in steps 1 and 2.



### STEP 3: Attach Lower Bag Rod Clips

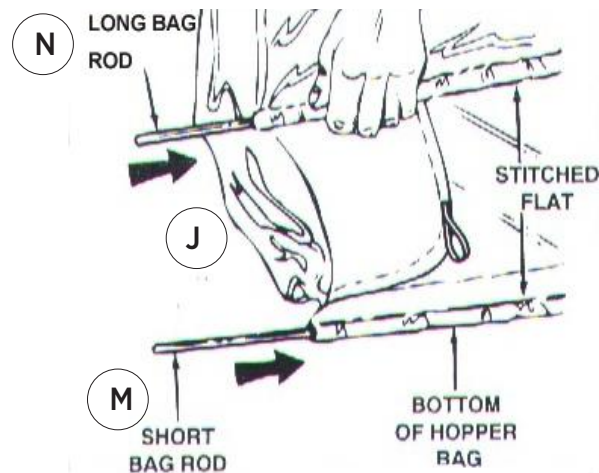
1. Put two (2) bag rod clips (H) on the inside of each lower handle tube using a M6 x 30 carriage bolt (B), and then secure the rod clips using a Ø6 lock washer (D) and M6 hex nut (G).

NOTE: The open end of the bag rod clips needs to face towards the sweeper base.

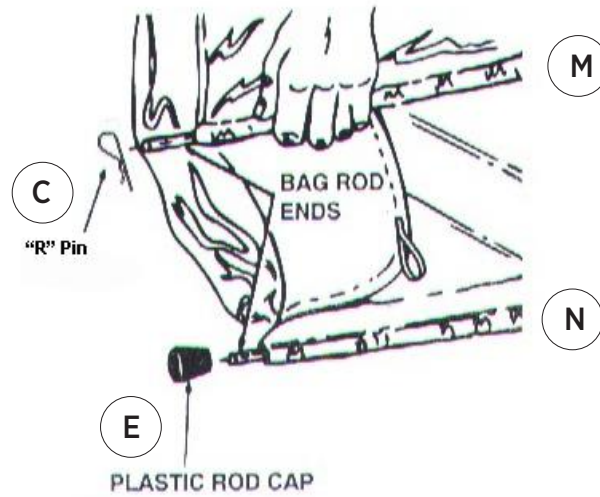


### STEP 4: Assemble Hopper Bag Hardware

1. Slide the long rod (N) through the top of the hopper bag (J) along the stitched area.
2. Push the short rod (M) through the bottom of the hopper bag (J) along the stitched area.

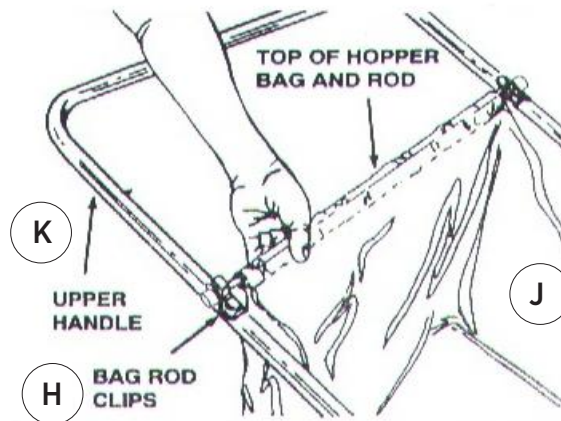


3. Attach the two (2) plastic caps (E) on each end of the bottom bag rod (M).
4. On the top of the bag, insert the R Pins (C) on each end of the long rod (N).

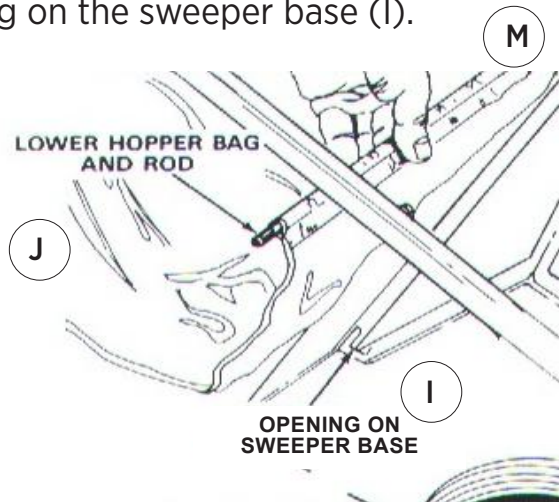


### STEP 5: Attach Hopper Bag to Sweeper

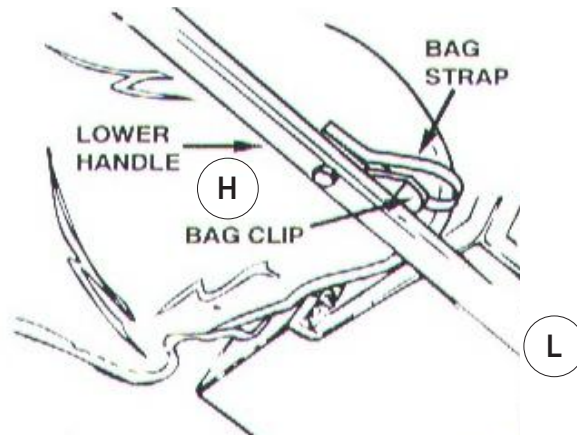
1. Fit the upper portion of the hopper bag (J) into the bag rod clips (H) located on the upper part of the handle (K).



2. Place the lower portion of the hopper bag (J) with the short bag rod (M) into the opening on the sweeper base (I).



3. Hook the elastic straps on the bag flaps under the bag rod clips (H) located on the lower support leg tubes (L).

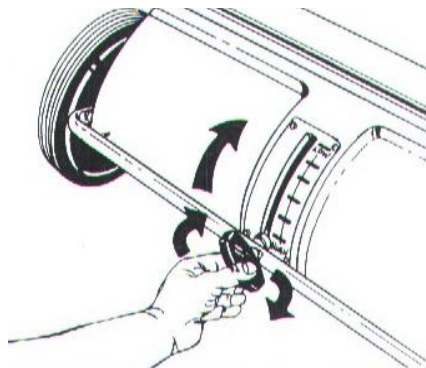


4. Make sure all hardware components and the hopper bag (J) are installed correctly before operating the sweeper.

## OPERATION INSTRUCTIONS

### Adjusting Brush Height

You have the ability to adjust the height of the brushes to get the best sweeping results. To do this, loosen the brush knob on the sweeper base and slide the height adjustment tube down to raise the brushes or up to lower the brushes. The most suitable brush height depends on the height of the grass. Make sure the brushes are no more than  $\frac{1}{2}$ " down into the grass.



### Dumping Hopper Bag

There are two ways to dump hopper bag:

1. Tip the sweeper forward, allowing the leaves to fall out.
2. Take the hopper bag off of the frame and sweeper to dump.

**Always dump hopper bag after each use of the sweeper.** Damp or wet grass and leaves will cause damage to the hopper bag if left inside for an extended period of time.

## **MAINTENANCE AND STORAGE**

**WARNING! Improper maintenance and storage of the lawn sweeper may void your warranty.**

### **Sweeper Maintenance**

- After each use, clean collected material out of hopper bag.
- Rinse off and dry inside and outside of the sweeper after each use.
- Periodically check all fasteners for tightness.
- Annually clean and lightly lubricate parts.
- Use a glossy enamel spray paint to touch up scratched or worn painted metal surfaces (if desired.)
- Again, never exceed the hopper load capacity of 7 cu. ft. Exceeding load capacity will damage the bag.

### **Lubrication**

It is recommended that a few drops of light oil be added to the brush shaft bearings twice a year. Also, the wheels should be removed to clean gears every two (2) years.

To remove the wheels, use a screwdriver to pop off hub cap, then remove the “E” ring and flat washer. After the cleaning, apply an even coat of light grease to the gears.

### **Brush Replacement**

NOTE: If a part needs replacement, only use parts that meet the manufacturer’s specifications. Replacement parts that do not meet specifications may result in poor operation or a safety hazard.

1. Remove the hopper bag from lawn sweeper.
2. Only replace one brush at a time. Do not remove the hex bolts from both brush retainers.
3. Tip the sweeper forward to inspect brush retainers.
4. Loosen hex bolts and hex lock nuts from single brush retainers. Slide brush out of retainers, making note of the position of the overlapping bristles.
5. Install new brush, make sure the overlapping bristles are in the same position as those before.

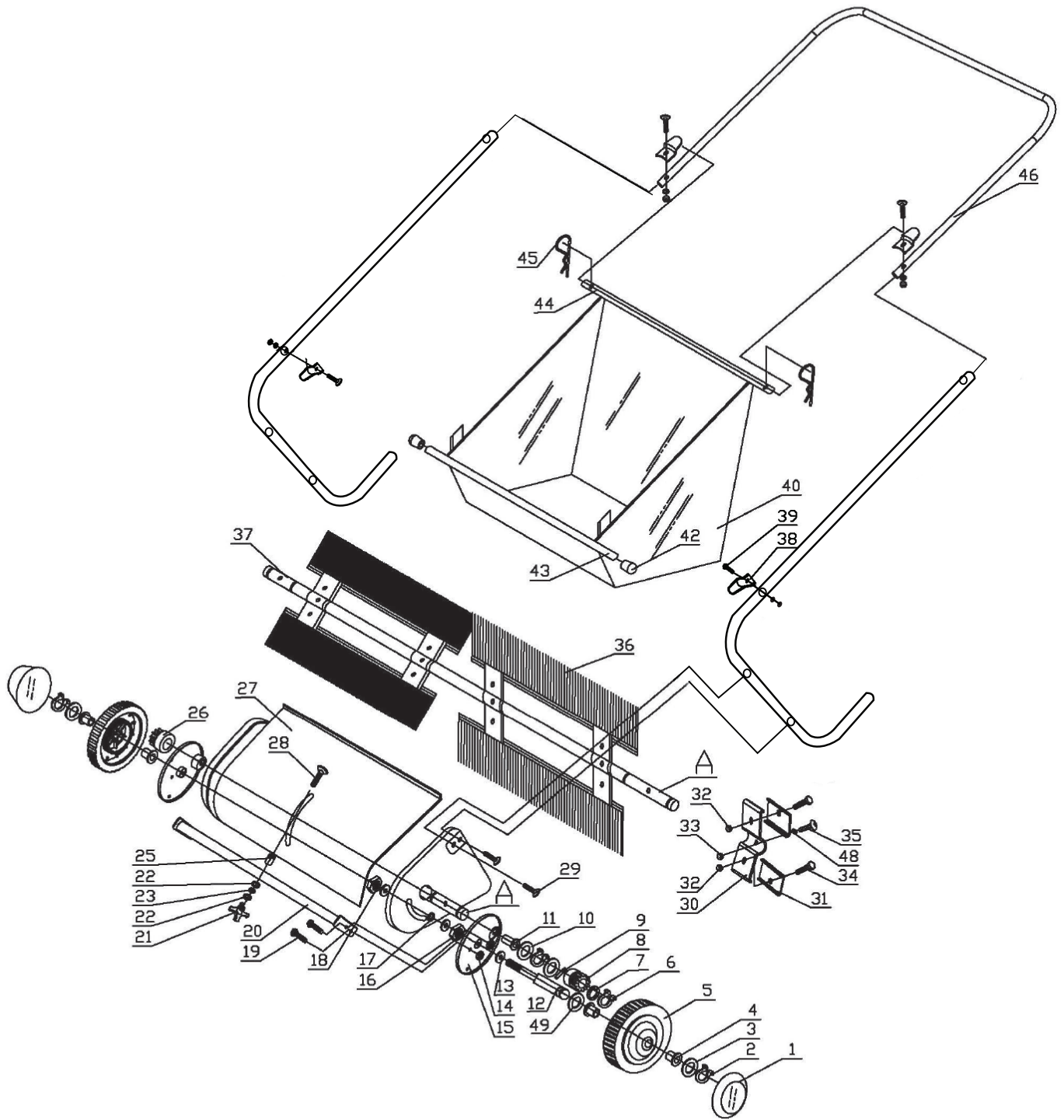
## **Storing Sweeper**

- Never allow material to remain in the bag after operating the sweeper.
- Before storing the sweeper, make sure the sweeper is clean and dry.
- Store the unit indoors or in an area protected from severe weather.
- This unit is designed to be hung on a wall if needed. The hopper bag may be removed from sweeper when stored.

## **Servicing Wheel Gears**

To service wheel gears, remove one wheel at a time to prevent confusion between left and right sided parts, (keep in mind the left and right sides are different). **DO NOT remove both wheels at the same time.** When removing gears keep in mind of the positions of all washers and retaining rings with the sweeper base.

The pawl has both a curved and flat end and is located inside the ratchet gear. When reinstalling the ratchet gear and pawl, first apply grease onto gears. Once the wheel is reassembled, turn wheel to make sure everything is operating properly. If the brush drive rotates in two directions, the pawl was reinstalled **INCORRECTLY**. If this happens, flip the pawl over so the brush drive rotates in one direction. If the brush drive rotates in one direction, then the pawl was reinstalled **CORRECTLY**.



Part No	Description	Qty	Part No	Description	Qty
1	Plastic Cover for Wheel	2	26	Pinion Gear R.H.	1
2	Back Ring Ø16	2	27	Wrapper	1
3	Flat Washer Ø16	2	28	Carriage Bolt M8×55	1
4	Bushing	4	29	Hex Bolt M6×30	4
5	Wheel	2	30	Brush Clamp	4
6	Back Ring Ø15	4	31	Brush Retainer	8
7	Washer for Adjustment B	2	32	Nylon Lock Nut M6	12
8	Pinion Gear Left	1	33	Nylon Lock Nut M5	4
9	Pin of Gear	2	34	Hex Bolt M6×20	8
10	Washer for Adjustment A	4	35	Hex Bolt M5×25	4
11	Bearing for Brush	2	36	Brush Assembly	4
12	Wheel Axle	2	37	Brush Axle	1
13	Big Washer Ø10	6	38	Z-style Plate	4
14	Nylon Lock Nut M8	4	39	Carriage Bolt M6×30	4
15	Dust Cover Assembly	2	40	Hopper Bag	1
16	Hex Nut M10	2	41	Support Leg	2
17	Endplate Bushing	2	42	Plastic End Cover	2
18	Nylon Lock Nut M10	2	43	Bag Frame Strap	1
19	Hex Bolt M8×12	4	44	Rear Hopper Frame Tube	1
20	Connect Tube	1	45	Pin Ø2	2
21	Knob	1	46	Handle Frame	1
22	Big Washer Ø8	2	47	Lock Washer Ø6	4
23	Lock Washer Ø8 w/Teeth	1	48	Star Washer Ø5	4
24	Hex Nut M6	4	49	Washer for Adjustment F	2
25	Cushion Washer	1			

## SPECIFICATIONS

- Load Capacity: 7 cu. ft.
- Sweeper Type: Push
- Hopper Material: Polypropylene
- Hopper Dimensions: 23.6" x 22" x 25.5" (59.9 x 55.9 x 64.8 cm)
- Overall Dimensions: 51.2" x 31.5" x 33.9" (130 x 80 x 86.1 cm)
- Wheel size: 10" (25.4 cm)
- Unit Weight: 37 lbs. (16.8 kg)

**WARRANTY**  
**LIMITED WARRANTY ON RIGHT HAND™ LAWN SWEEPER**

THIS LIMITED WARRANTY GIVES YOU SPECIFIC LEGAL RIGHTS AND YOU MAY ALSO HAVE OTHER RIGHTS, WHICH VARY FROM STATE TO STATE.

WE WARRANT THAT DURING THE WARRANTY PERIOD, THE PRODUCT WILL BE FREE FROM DEFECTS IN MATERIALS AND WORKMANSHIP.

**LIMITATION OF LIABILITY**

TO THE EXTENT NOT PROHIBITED BY LAW, THIS WARRANTY IS EXCLUSIVE AND IN LIEU OF ALL OTHER WARRANTIES, ORAL, WRITTEN, STATUTORY, EXPRESS OR IMPLIED. EXCEPT FOR THE EXPRESS WARRANTIES CONTAINED IN THIS LIMITED WARRANTY STATEMENT AND TO THE EXTENT NOT PROHIBITED BY LAW, WE DISCLAIM ALL OTHER WARRANTIES, EXPRESSED OR IMPLIED, STATUTORY OR OTHERWISE, INCLUDING WITHOUT LIMITATION, THE WARRANTIES OF MERCHANTABILITY AND FITNESS FOR A PARTICULAR PURPOSE.

SOME STATES DO NOT ALLOW DISCLAIMERS OF IMPLIED WARRANTIES, SO THIS DISCLAIMER MAY NOT APPLY TO YOU. TO THE EXTENT SUCH WARRANTIES CANNOT BE DISCLAIMED UNDER THE LAWS OF YOUR JURISDICTION, WE LIMIT THE DURATION AND REMEDIES OF SUCH WARRANTIES TO THE DURATION OF THIS EXPRESS LIMITED WARRANTY.

OUR RESPONSIBILITY FOR DEFECTIVE GOODS IS LIMITED TO REPAIR, REPLACEMENT OR REFUND AS DESCRIBED BELOW IN THIS WARRANTY STATEMENT.

**WHO MAY USE THIS WARRANTY?** C&A Marketing, Inc. located at 114 Tived Lane East, Edison, NJ (“we”) extend this limited warranty only to the consumer who originally purchased the product (“you”). It does not extend to any subsequent owner or other transferee of the product.

**WHAT DOES THIS WARRANTY COVER?** This limited warranty covers defects in materials and workmanship of the Right Hand™ Lawn Sweeper (the “product”) for the Warranty Period as defined below.

**WHAT DOES THIS WARRANTY NOT COVER?** This limited warranty does not cover any damage due to: (a) transportation; (b) storage; (c) improper use; (d) failure to follow the product instructions or to perform any preventive maintenance; (e) modifications; (f) unauthorized repair; (g) normal wear and tear; or (h) external causes such as accidents, abuse, or other actions or events beyond our reasonable control.

**WHAT IS THE PERIOD OF COVERAGE?** This limited warranty starts on the date of your purchase and lasts for one year (the “**Warranty Period**”). The Warranty Period is not extended if we repair or replace the product. We may change the availability of this limited warranty at our discretion, but any changes will not be retroactive.

**WHAT ARE YOUR REMEDIES UNDER THIS WARRANTY?** With respect to any defective product during the Warranty Period, we will, at our sole discretion, either: (a) repair or replace such product (or the defective part) free of charge or (b) refund the purchase price of such product if an exchange unit cannot be provided.

**HOW DO YOU OBTAIN WARRANTY SERVICE?** To obtain warranty service, you must contact us at 833-665-2121 or by email at [info@supportcbp.com](mailto:info@supportcbp.com) during the Warranty Period to obtain a Defective Merchandise Authorization (“**DMA**”) number. No warranty service will be provided without a DMA number and return shipping costs to our facilities shall be assumed by you, the purchaser. Shipping costs of the replacement unit to you shall be assumed by us.

## Questions or Problems? Contact Us!

[info@supportcbp.com](mailto:info@supportcbp.com)

1-833-665-2121

Distributed by  
C&A Marketing, Inc.  
114 Tived Lane East  
Edison, NJ 08837 USA

[info@supportcbp.com](mailto:info@supportcbp.com)

Made in China  
Right Hand is a trademark of  
C&A IP Holdings, LLC, in the U.S.  
©2020. All rights reserved

All other products, brand names, company names, and logos are trademarks of their respective owners, used merely to identify their respective products, and are not meant to connote any sponsorship, endorsement or approval.