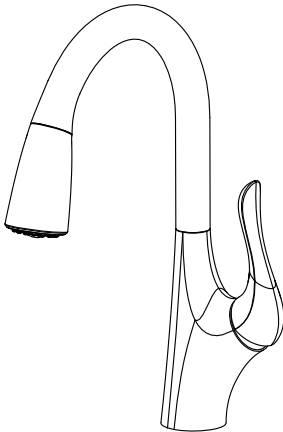


NO.	PART NAME
1	Shower
2	Shower hose
3	Shower sleeve
4	Spout
5	Ring
6	O-ring
7	Connector
8	Retainer
9	Body
10	Cartridge
11	Cartridge lock nut
12	Trim cap
13	Handle
14	Screw
15	Index
16	Threaded shank
17	Copper tube(hot water)
18	Copper tube
19	Copper tube(cold water)
20	Quick connect
21	O-ring
22	Gasket assembly
23	Lock nut
24	Screw
25	Weight
26	Allen key
27	Flexible hose
28	Pull-out protector



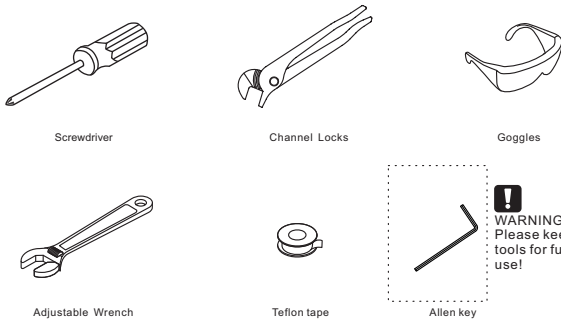
SINGLE HANDLE PULL-DOWN KITCHEN FAUCET

The product is CUPC, NSF-61, Ab1953 and ADA certified.

Original certification model code: VF56D92-2567

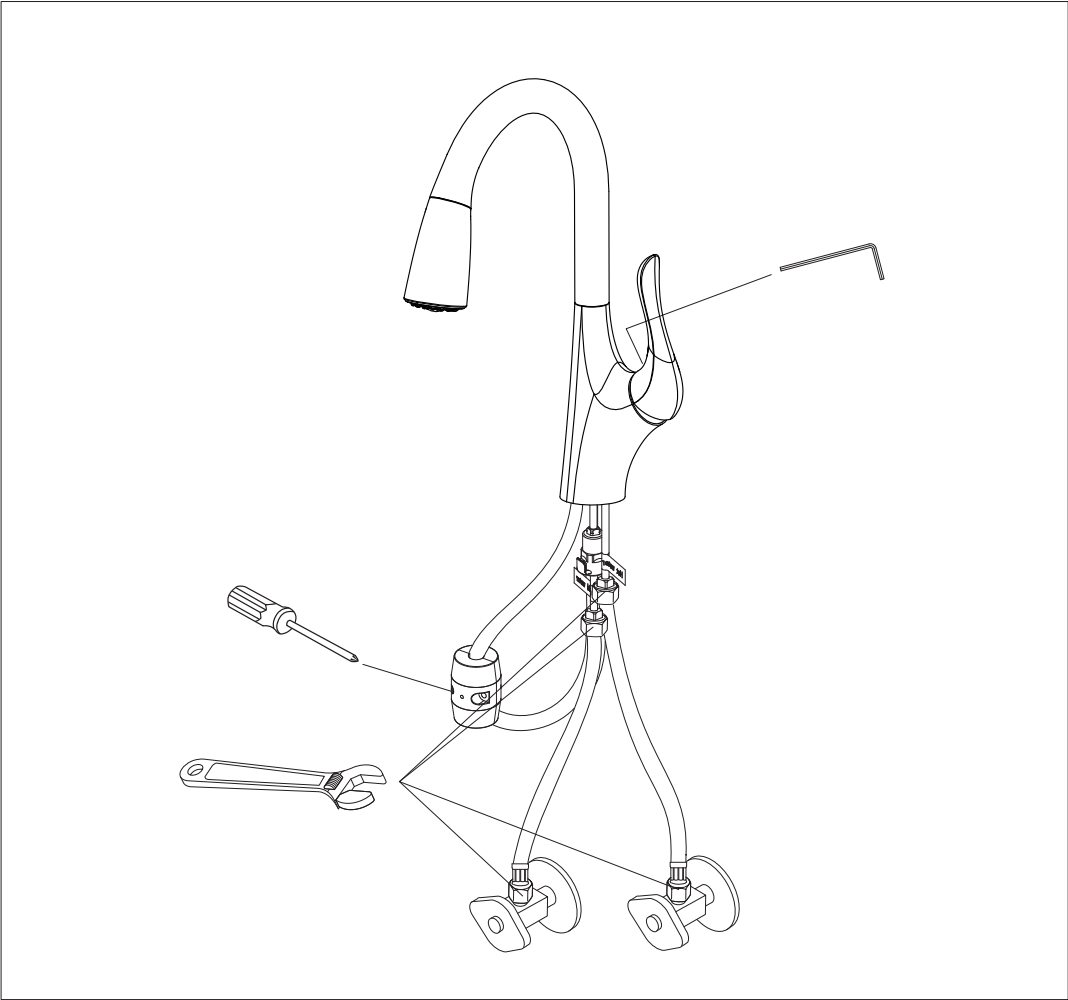
ASME A112.18.1/CSA B125.1

RECOMMENDED TOOLS

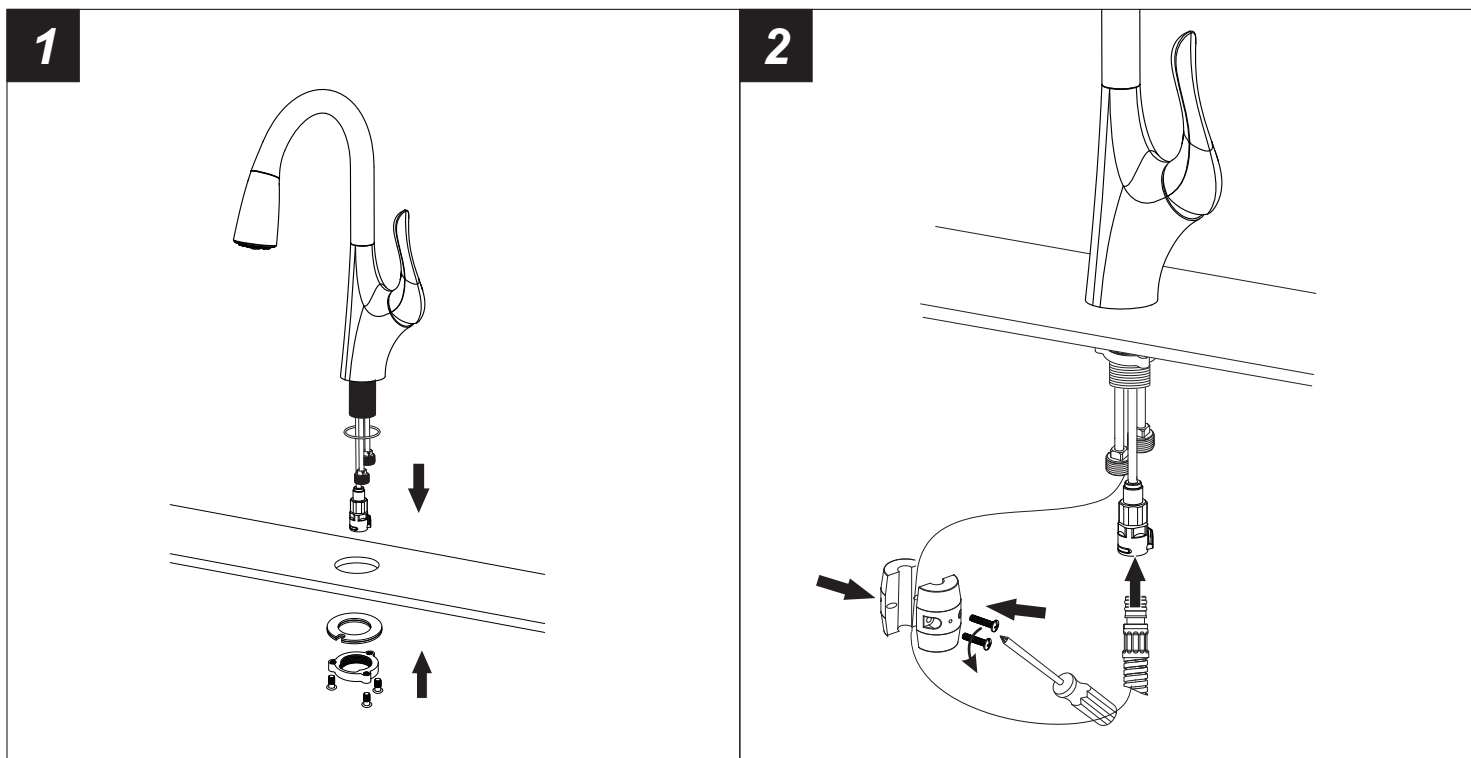


Attention:
for easy installation, you will need:
1.To read all the installation instruction completely before beginning.
2.To read all the warning, attention and maintenance information.
3.To purchase the proper supply lines.

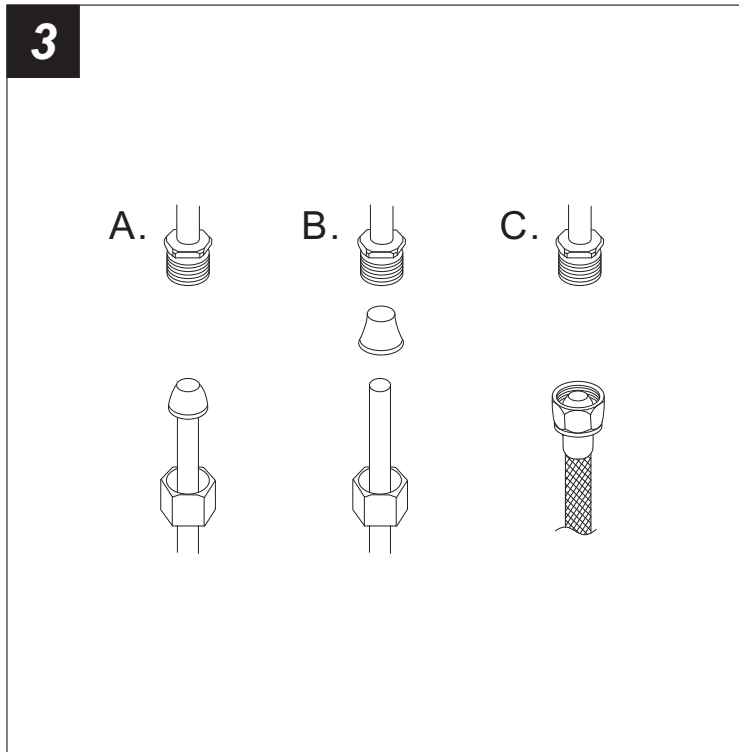
The tools might be applied to the following places:



Step 1 Faucet installation

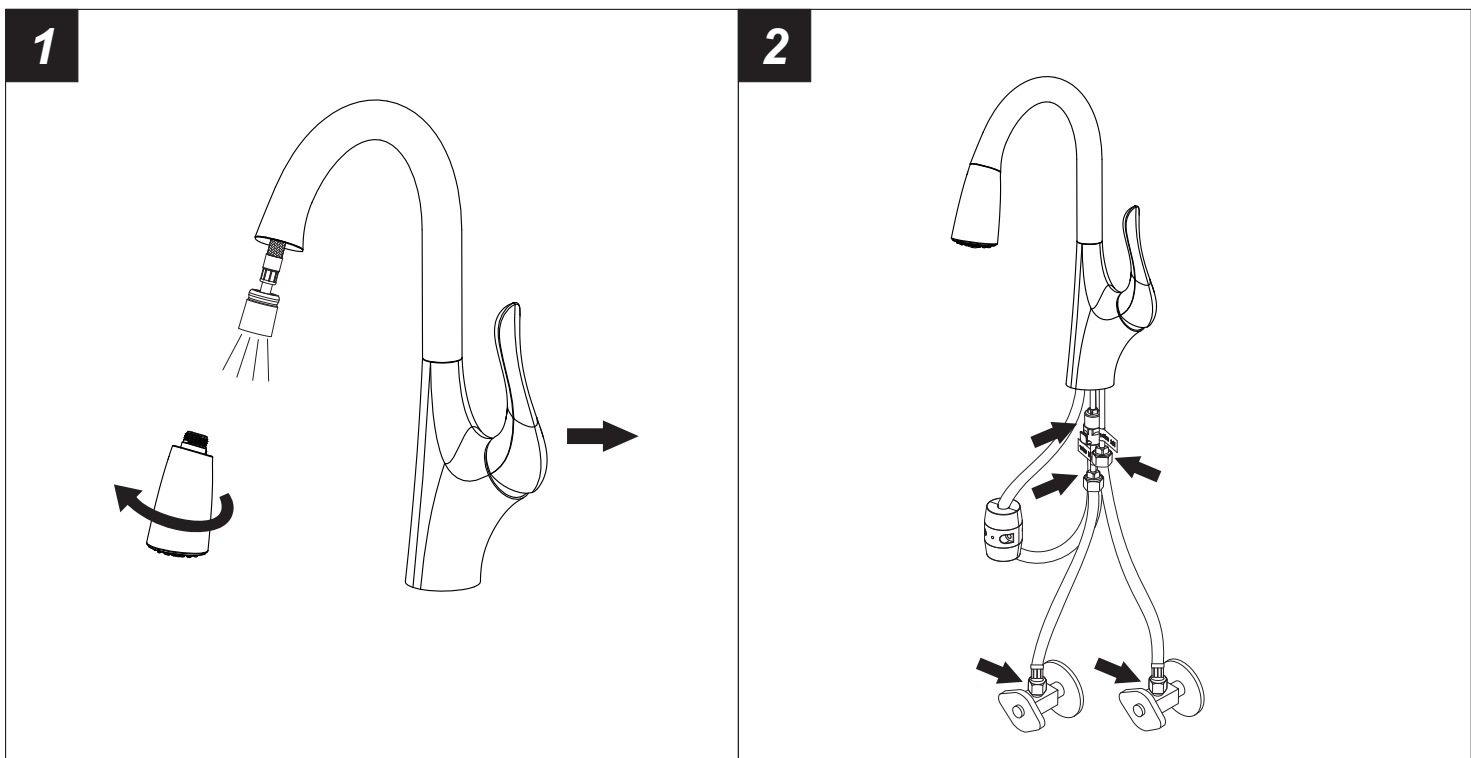


- 1.Position the faucet in order on the counter top as shown. **Don't forget the O-ring.** Assemble gasket assembly and lock nut to faucet threaded sleeve by hand and tighten the screws with screwdriver.
- 2.Connect the shower hose to quick connect. **CAUTION: MAKE SURE THE HOSE IS PROPERLY ENGAGED AND SECURED IN THE QUICK CONNECT.** Dis-assemble the weight and put it on the shower hose. Then fix screws by screw driver.



- 3.Connect to water supply lines with either:
- (A)3/8" O.D. Copper tubing (ball nose risers with the coupling nuts) or;
 - (B)3/8" Copper tubing (no ball) with supplied tube head interior connector or;
 - (C)IPS faucet connectors(1/2 ").

Step 2 Checking and testing



- 1.Remove the shower by hand. Turn the faucet handle all the way on, turn on hot and cold water supply and flush water lines for one minute. Reinstall shower by hand.
- 2.Check all connections at arrows for leaks, re-tighten it if necessary.

!
BUT DON'T OVERTIGHTEN

Step 3 Cleaning and care

Daily cleaning and care are required in order to keep the product shining and properly working.

- 1 Clean it with water and dry it with soft cloth.
- 2 Clean the product with gentle liquid or glass cleaner.
- 3 Don't use acid cleaner.
- 4 Don't clean with abrasive material, abrasive paper or knife.