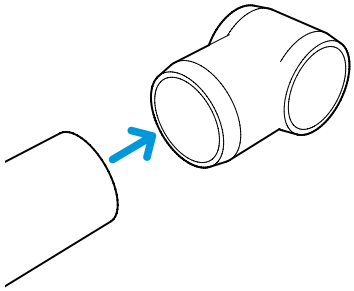
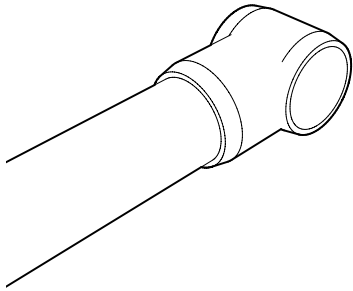
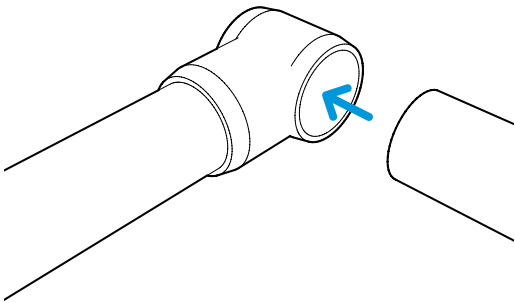
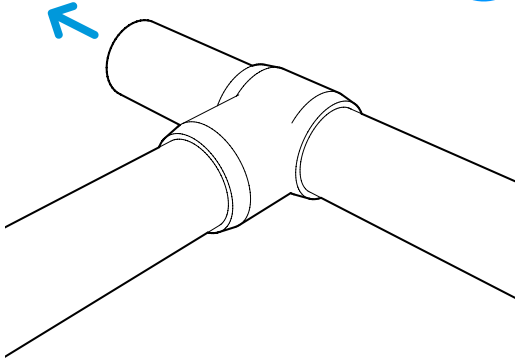


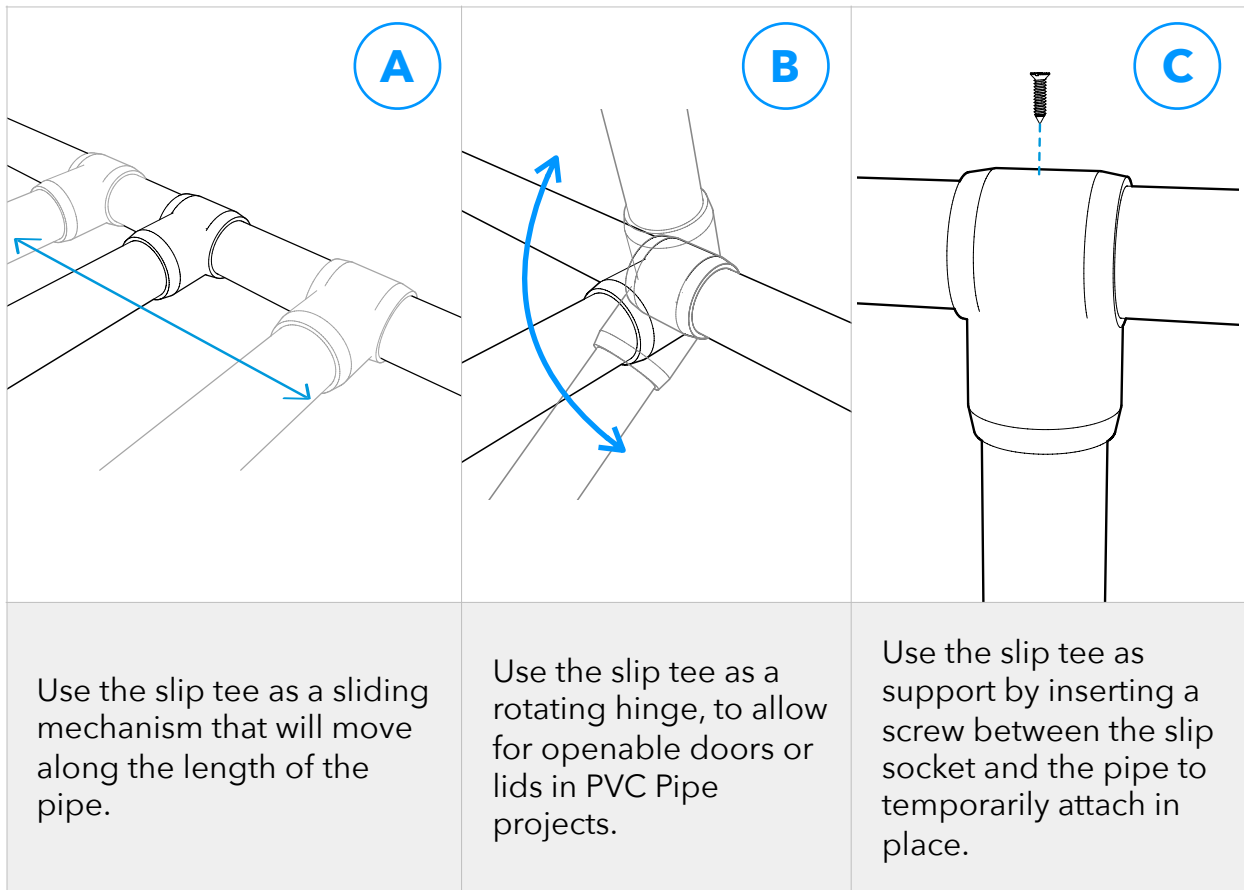
PRODUCT INSTRUCTIONS

Slip Sling Tee

FORMUFIT Slip Tees connect two (2) segments of PVC Pipe perpendicularly and allow one segment of pipe to rotate or slide along another. To connect this product to PVC pipe, follow the instructions shown below.

 <p>1</p>	 <p>2</p>
<p>Line up and insert one end of a PVC Pipe inside the 'static' socket end of the Slip Tee.</p>	<p>Push or tap into place until the pipe is fully seated.</p>
 <p>3</p>	 <p>4</p>
<p>Insert another PVC Pipe into the slip end of the Slip Tee.</p>	<p>Push through until the pipe emerges from the opposite end of the Slip Tee.</p>

Use and Adjustment



Securing

For permanent and strong connections, it is recommended to use PVC cement/solvent to attach the PVC pipe and the slip tee on the static socket. Do not use PVC cement on the slip socket if you wish for your project to rotate or slide.

You can also temporarily connect fitting by driving a self-tapping screw where the pipe and fitting meet, or apply electrical tape over the end of the PVC pipe prior to insertion into the static port for a temporary, yet strong connection.