



**FLI** **PRO**  
TELESCOPING  
LIGHT



# FLI-PRO TELESCOPING LIGHT

CREE  
LED

MAGNETIC

USB-C  
RECHARGEABLE

6  
MODES  
+ DIMMING

WEATHER  
RESISTANT

## A TELESCOPING CANOPY LIGHT THAT EXTENDS 8 FEET OFF THE GROUND

The FLi-PRO flashlight head is extremely unique and innovative. It features a 360° canopy light that fires a ring of high intensity LEDs down to the ground from a height of 8 feet when mounted on the telescoping pole. For easy operation once mounted, the light comes with a wireless remote control, allowing users to control all light functions from a distance.

Users can quickly disconnect the light from the pole and use it as a traditional flashlight by turning on the spotlight located at the top of the head. If hands free lighting is needed, the neodymium magnet embedded in the tail of the flashlight connects to any steel surface. In addition, dual nested hang hooks in the head allow users to hang the FLi-PRO overhead and use the 360° canopy light in any location.



## PERFECT FOR CAMPING, WORKING AROUND THE HOUSE, LATE NIGHTS IN THE BACKYARD, OR FOR GARAGE PROJECTS



- « LIGHTWEIGHT
- « WIRELESS CONTROL
- « USB-C RECHARGEABLE
- « CANOPY LIGHT + SPOTLIGHT



REMOVABLE MULTI-USE  
**FLASHLIGHT**

**SPOTLIGHT +  
CANOPY LIGHT**

# FLI-PRO TELESCOPING LIGHT

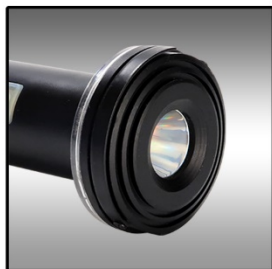
The FLI-PRO is powered by a very capable 21700 lithium-ion battery with a massive 4000mAh capacity. It will power the LEDs up to 1200 total True Lumens. The power can be dialed back by dimming any feature to lower the light output, while simultaneously preserving battery power. Turn to red mode, which preserves your natural “night vision” by not dilating your eyes as much, or switch into flashing hazard mode for emergency situations. When it is time to recharge, utilize the quick charging USB-C port

## REMOVABLE FLASHLIGHT

**1200**  
TRUE LUMENS



- 
- 
- 
- 
- 



**Spotlight**

- Use as traditional flashlight
- Up to 400 lumens



**Ring Flood Light**

- Bright area lighting
- WHITE or RED light
- Up to 900 lumens



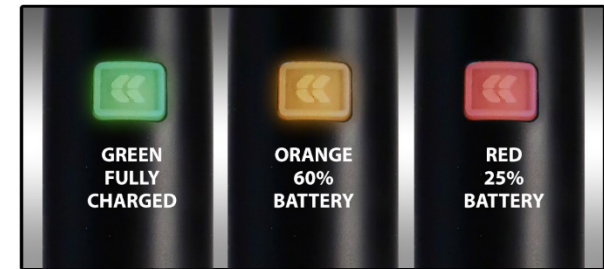
**Hanging Hook**

- Used the nested hanging hook to hook the light onto many objects.



**Magnetic Base**

- A powerful neodymium magnet to stick on many metal surfaces



**Power Button / Battery Level Indicator**

- Press to turn on/off and change modes
- Built in battery level indicator

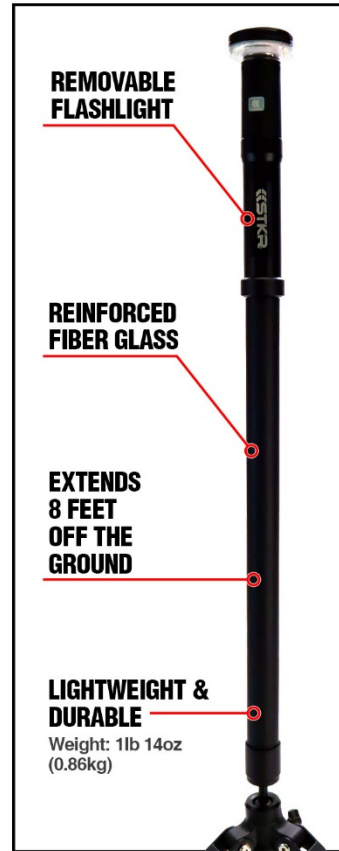
**USB-C RECHARGEABLE**

**21700 LITHIUM-ION BATTERY  
4000 MAH CAPACITY**



**8FT**  
EXTENSION

**40FT**  
LIGHT DIAMETER

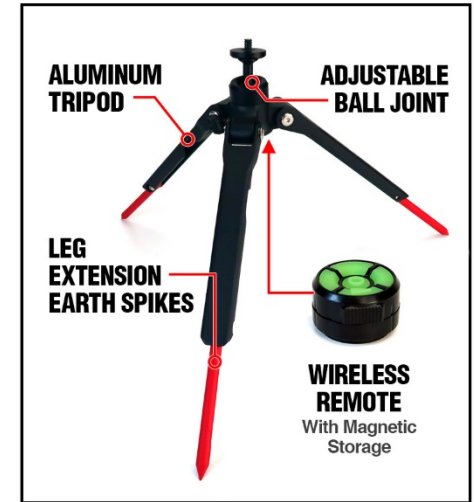


**REMOVABLE FLASHLIGHT**

**REINFORCED FIBER GLASS**

**EXTENDS 8 FEET OFF THE GROUND**

**LIGHTWEIGHT & DURABLE**  
Weight: 1lb 14oz (0.86kg)



**ALUMINUM TRIPOD**

**ADJUSTABLE BALL JOINT**

**LEG EXTENSION EARTH SPIKES**

**WIRELESS REMOTE**  
With Magnetic Storage

- « **REINFORCED FIBERGLASS ROD**
- « **LIGHTWEIGHT AND DURABLE**
- « **FIT TO LOCK:** lock each height level
- « **8FT EXTENSION:** select different heights
- « **EASY TRANSPORT:** perfect for any task



The FLi-Pro is held steady by its cast aluminum tripod located at the bottom of the telescoping pole. Each leg of the tripod has an extendable earth spike that can be spiked into the ground for 100% stability, or fully extended when on hard surfaces to increase the overall footprint and stability of the tripod. The tripod legs are also independently adjustable to account for uneven surfaces. The ball joint at the top of the tripod allows the user to fine tune the angle of the telescoping pole, to ensure it is perfectly vertical and stable.