

**REPLACEMENT PARTS LIST**

#	50K	75K	135K	175K	210K	Description
1	21036	21036	21036	21036	21036	Power Cord
2	26958	26970	26974	27112	27112	Fuel Tank Assembly
3	****	21883	21884	21885	21886	RadiationShield Ass'y
4	26960	26967	26975	26975	26975	Power Pac Ass'y
5	21686	24343	24346	24346	24346	Fuel Tube
6	21835	21836	21837	21837	21837	Grille Assembly
7	24011	24011	24011	24011	24011	Oil cad cell Bracket
8	28779	28779	28792	28793	28793	Fuel Filter
9	23449	23449	23449	23449	23449	Motor Cord Sleeve
10	26957	27144	26973	27111	27111	Bottom Shell
11	21844	27143	26972	27110	27110	Top Shell, Burner
12	21854	26966	26971	27109	27109	Top Shell, Insp. Cover
13	21864	21864	21865	21865	21865	Motor Mounting Brkt
14	****	28788	28735	28735	28735	Start Capacitor
15	23725	23725	24345	24345	24345	Air Tube
16	26225	26225	26225	26225	26225	Snap Bushing
17	26962	21794	26901	22105	22105	High Limit Control
18	F226831	F226831	F226831	F226831	F226831	Kit, Rotor
19	****	26898	26898	26898	26898	Receptacle, 110V
20	****	22104	22104	22104	22104	AC Receptacle Cover
21	26833	26833	26833	26833	26833	Air Pump Cylinder
22	21810	21810	21810	21810	21810	Outlet Housing
23	21812	21812	21812	21812	21812	Inlet Housing
24	****	****	22257	22257	22257	Burner Head Ass'y
25	F221887	F221887	F221887	F221887	F221887	Kit, Filter
26	21814	21814	21814	21814	21814	Outlet Filter
27	21815	21815	21815	21815	21815	Inlet Filter
28	F266842	F266842	F266842	F266842	F266842	Kit, Pump Adjustment
29	21866	21866	21867	21867	21867	Flame Control Ass'y
30	21816	21816	21816	21816	21816	Flame Control Bracket
31	F226865	F226865	F226865	F226865	F226865	cad cell Flame Sensor
32	21882	21868	21869	21870	21871	Comb.Chamber Cyl. Ass'y

#	50K	75K	135K	175K	210K	Description
33	26959	26959	26959	26959	26959	Fuel Cap
34	26910	26910	26910	26910	26910	Fuel Cap Gasket
35	27339	21817	21818	21818	21818	Motor
36	27790	27790	28739	28739	28739	Nozzle Adapter
37	27421	28740	26885	26866	26866	Fan
38	22142	22142	22142	22142	22142	Igniter Assembly
39	F227416	F221878	F221879	F221889	F221891	Fuel Air Aspir. Nozzle
40	26223	26223	26223	26223	26223	Strain Relief Bushing
41	F221857	F221857	F221857	F221857	F221857	Electrode Assembly
42	21820	21820	21820	21820	21820	Electrode Insulated Cover
43	21821	21821	21821	21821	21821	Hose Barb Adapter
44	****	21822	21822	21822	21822	Thermostat Knob
45	****	21734	21734	21734	21734	Thermostat Assembly
46	28785	28785	28785	28785	28785	ON/OFF Switch
47	****	28791	28778	22185	22185	Fuel Gauge
48	26964	21888	27107	27116	27116	Control Panel
49	26965	26968	27108	27117	27117	Control Panel Back
50	28786	28786	28786	28786	28786	Pressure Gauge, Round
51	40801	40801	****	****	****	Handle
52	21813	21813	21813	21813	21813	Gasket, Outlet Filter
*	24171	24171	****	****	****	Nozzle mtg. plate
*			26227	26227	26227	Snap Bushing
*	27429	27429	27429	27429	27429	Nozzle Ext. Retaining Ring
*	28745	28745	****	****	****	Fuel Line Bushing
*	****	22146	22146	22146	22146	Bracket Thermostat Mtg.
*	****	26070	26070	26070	26070	Clamp Loop

English

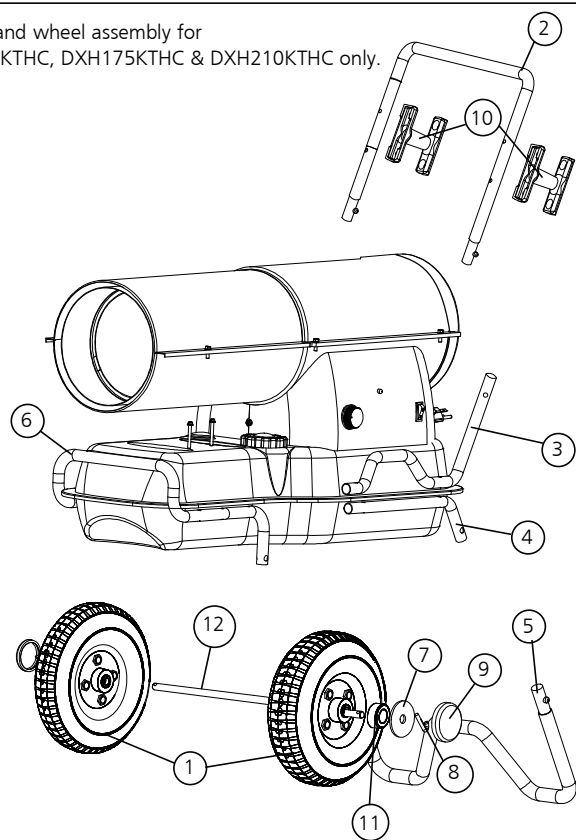
\* Not shown in Figure

\*\*\*\* Not applicable to model

## PARTS LIST

Handle and wheel assembly for  
DXH135KTHC, DXH175KTHC & DXH210KTHC only.

Ref.	Item #	Item #	Item #	Description
	135K	175k	210K	
1	40981	40981	40981	Wheel Assembly, 10"
2	27127	27129	27129	Upper Handle w/Spring Clips
*	27121	27121	27121	Lower Handle, Right
3	22173	22173	22173	Lower Handle, Left
*	27105	27105	27105	Leg Support, Right
4	27105	27105	27105	Leg Support, Left
5	27104	27132	27133	Support Leg
6	27128	27130	27131	Front Handle
7	28749	28749	28749	Large Retainer Washer
8	28750	28750	28750	Cotter Pin
9	28751	28751	28751	Hub Cap
10	28754	28754	28754	Extension Cord Caddy
11	21897	21897	21897	Wheel Spacer
12	22168	22184	22184	Axel
*	28787	28787	28787	Hardware Package



\* Not shown in drawing