

THE SMART ALTERNATIVE TO VINYL.



A BETTER CHOICE FOR YOUR HOME.

Whether you're replacing or remodeling, Andersen® 100 Series windows and patio doors offer many advantages over vinyl. They offer superior strength and performance because they're made of **Fibrex® composite material**, which is 2X stronger and more durable than vinyl, and they're available in a variety of rich exterior colors that are made to last. Plus, 100 Series windows and patio doors are environmentally responsible and energy efficient, making them a better choice for your home.



STRENGTH & PERFORMANCE

Here's what helps make our innovative Fibrex composite material so revolutionary:

- Retains its stability and rigidity in all climates, delivering exceptional durability
- Won't rust, pit or corrode,* even in extreme temperatures
- Can withstand temperatures in excess of 160°F, even in dark colors
- Blocks thermal transfer nearly 700 times better than aluminum to help reduce heating and cooling bills

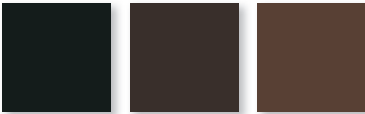
*See limited warranty for details.

FIBREX®
MATERIAL IS
2X
STRONGER
THAN VINYL

COLORS THAT LAST

Durable, factory-finished interiors and exteriors **never need painting and won't fade, flake, blister or peel,** even in extreme cold or heat.

EXTERIOR COLORS:



Black Dark Bronze Cocoa Bean



Terratone Sandtone White

See page 6 for interior color options.

ENVIRONMENTALLY RESPONSIBLE

Exclusive Andersen® Fibrex® composite material is composed of **40% reclaimed wood fiber by weight**, most of which is reclaimed from the manufacturing of Andersen® wood windows.



ADVANCED CRAFTSMANSHIP

To give your home a beautiful, clean look inside and out, Andersen® 100 Series products feature **virtually seamless corners.** In addition, they feature a low-maintenance, **premium matte finish** that isn't shiny like vinyl.



100 Series corner seam



Vinyl corner seam

OWNER2OWNER® LIMITED WARRANTY

QUALITY SO SOLID, THE WARRANTY IS TRANSFERABLE*

Most other window and door warranties end when a home is sold, but our coverage — 20 years on glass, 10 years on non-glass parts — transfers from each homeowner to the next. And, because it's not prorated, the coverage offers full benefits, year after year, owner after owner.

*See limited warranty for details. Printing limitations prevent exact color duplication.



Andersen® 100 Series casement and transom windows in white.



Andersen® 100 Series single-hung windows in white.



Andersen® 100 Series transom and picture windows in white.

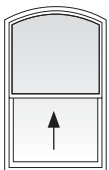
WINDOW & DOOR TYPES

Andersen® 100 Series windows and patio doors allow you to create a home in virtually any style. They're available in a variety of styles and shapes, plus you can order them in the custom sizes you need to bring your vision to life.

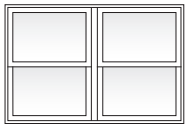


SINGLE-HUNG WINDOWS

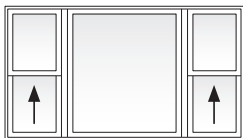
This style features a stationary upper sash that is also available with an arched top to enhance the look of your home.



Arch Single-Hung Window



Twin Single-Hung Window

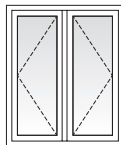


Picture Window With Flanking Single-Hung (More combination options available)

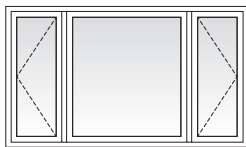


CASEMENT & AWNING WINDOWS

Both styles open with a simple turn of a handle and can also be ordered as stationary windows.



Twin Casement Window

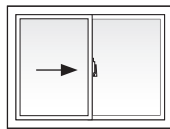


Picture Window With Flanking Casement (More combination options available)

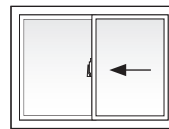


GLIDING WINDOWS

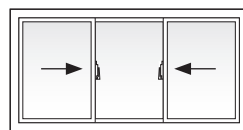
These units have one stationary sash and one that opens. A three-sash configuration, where two sash glide past a fixed center sash, is also available.



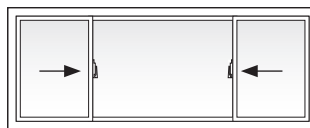
2-Sash (XO)



2-Sash (OX)



3-Sash (XOX)



Unequal 3-Sash (XOX)
(More combination options available)



SPECIALTY WINDOWS

A variety of shapes are available to complement your home's architecture.



GLIDING PATIO DOORS

Patio doors have one stationary panel and one that glides smoothly on adjustable rollers. They feature a multi-point locking system for enhanced security, and an optional exterior keyed lock for convenience. For more character, consider adding Andersen 100 Series sidelight windows on each side of your door and a transom window on top.



Available in custom sizes to fit all projects, including replacement.

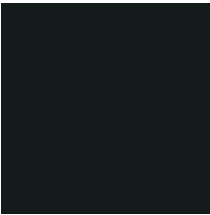


Andersen® 100 Series single-hung windows in dark bronze.

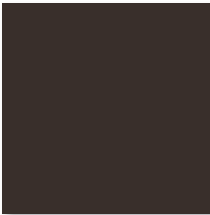
COLOR OPTIONS

EXTERIOR COLORS

Andersen® 100 Series products come in six exterior colors, including Cocoa Bean, Dark Bronze and Black.



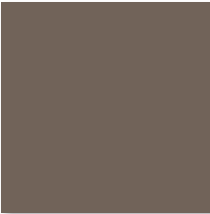
Black



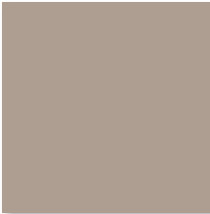
Dark Bronze



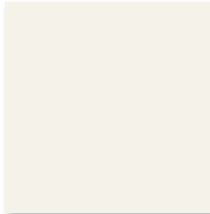
Cocoa Bean



Terratone



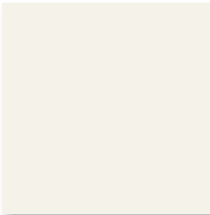
Sandtone



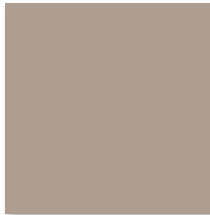
White

INTERIOR COLORS

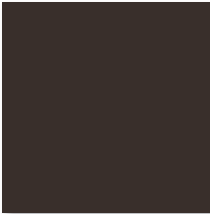
100 Series windows and doors feature an attractive matte finish inside. This gives you the ability to select the interior color without compromising options for your interior decor.



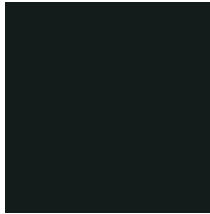
White



Sandtone



Dark Bronze*



Black*

*Black and Dark Bronze interiors are only available with Black and Dark Bronze exteriors respectively. Printing limitations prevent exact color duplication.

GLASS OPTIONS

Andersen has the glass you need to get the performance you want with options for every climate and project. Ask a sales associate for the selections that are ENERGY STAR® certified in your area.

PERFORMANCE COMPARISON OF ANDERSEN® 100 SERIES GLASS OPTIONS

GLASS	E N E R G Y		L I G H T	
	U-FACTOR	SOLAR HEAT GAIN COEFFICIENT	VISIBLE LIGHT TRANSMITTANCE	UV PROTECTION
Low-E Energy-efficient Low-E glass is available in all Andersen® 100 Series products, and can help reduce energy bills in any climate.	★★★★☆	★★★★☆	★★★★☆	★★★★☆
Low-E With HeatLock® Coating Applied to the room-side glass surface, it reflects heat back into the home and improves U-Factors.	★★★★☆	★★★★☆	★★★☆☆	★★★★☆
SmartSun™ Thermal control similar to tinted glass, but with the visible light transmittance of clear glass.	★★★★☆	★★★★★	★★★☆☆	★★★★★
SmartSun With HeatLock® Coating Applied to the room-side glass surface, it reflects heat back into the home and improves U-Factors.	★★★★☆	★★★★★	★★★☆☆	★★★★★
Clear Dual-Pane Dual-pane glass is available for projects where codes allow its use.*	★★★☆☆	★★★☆☆	★★★★★	★★★☆☆

Center of glass performance only. Ratings based on glass options available as of March 2015. Visit andersenwindows.com/energystar for ENERGY STAR® map and NFRC total unit performance data.

ADDITIONAL GLASS OPTIONS

Tempered safety glass is available (standard on gliding patio doors) as well as sound-reducing glass options.

Patterned glass lets in light while enhancing privacy and adds a unique, decorative touch to your home.



Cascade and Reed patterns can be ordered with either a vertical or horizontal orientation.

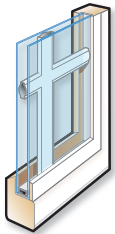


Andersen® 100 Series gliding patio door and rectangular transom in white.

*See local code official for requirements in your area.

GRILLE OPTIONS

GRILLE CONFIGURATIONS



Finelight™ Grilles-
Between-the-Glass



Finelight™ with
Exterior Grilles

Finelight™ grilles-between-the-glass make window and patio door glass easy to clean. They have a sculpted profile and allow you to match your interior and exterior color choice. This grille configuration is now available with an option for permanently applied exterior grilles for architectural detail.



Simulated Divided Light

Simulated divided light offers permanent grilles on the exterior and interior with no spacer between the glass.



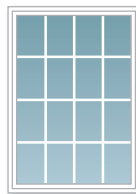
Full Divided Light

Full divided light offers permanent grilles on the exterior and interior with a spacer between the glass to create an authentic look.

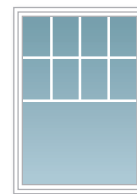


Andersen® 100 Series gliding patio door in white.

GRILLE PATTERNS



Colonial



Modified Colonial



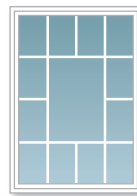
Prairie A



Short Fractional



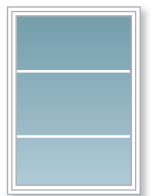
Tall Fractional



Victorian



Specified Equal
Light (2 x 2)



Specified Equal
Light (1 x 3)

OPTIONS & ACCESSORIES

WINDOW HARDWARE

STANDARD CASEMENT HARDWARE



Color matched to window interior

STANDARD SINGLE-HUNG AND GLIDING HARDWARE



Color matched to window interior

SLIM LINE CASEMENT HARDWARE (Optional)



White | Sandtone | Dark Bronze
Black | **Satin Nickel** | **Antique Brass**

SLIM LINE SINGLE-HUNG AND GLIDING HARDWARE (Optional)



White | Sandtone | Dark Bronze
Black | **Satin Nickel** | Antique Brass

PATIO DOOR HARDWARE

AFTON HARDWARE (Optional)



Exterior Handle Interior Handle

Antique Brass | Bright Brass
Black | **Satin Nickel**

TULSA HARDWARE (Standard)



Exterior Handle Interior Handle

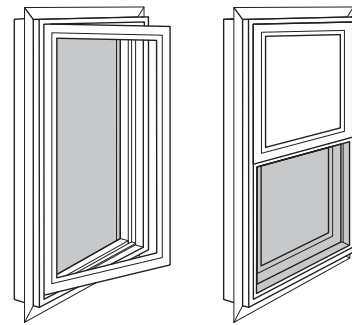
Dark Bronze | Cocoa Bean
Terratone | Sandtone
White | Black

Bold name denotes finish shown.

*Bold name denotes finish shown.
Handles match door color.*

INSECT SCREENS

Insect screens for windows and patio doors have a fiberglass screen cloth. Optional **TruScene® insect screens** for windows are made with a micro-fine stainless steel mesh, providing **50% more clarity** than our conventional insect screens.



Insect screens are available for all 100 Series venting windows.

WIRELESS OPEN/CLOSED SENSORS



When you want the peace of mind of knowing whether your windows and patio doors are open or closed, these sensors are a simple, reliable solution.

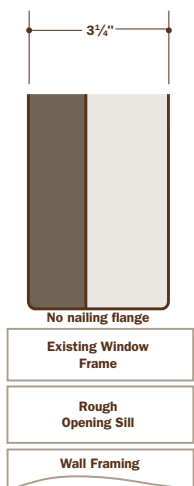
For more information, visit: andersenhomedepot.com/connect



Andersen® 100 Series single-hung windows in white.

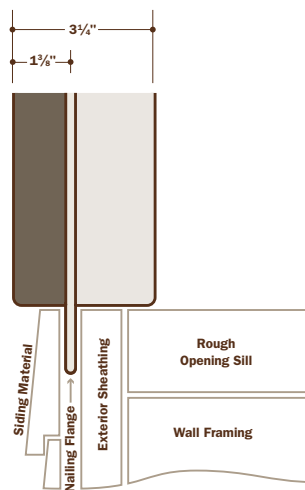
PERFECT FOR REPLACEMENT

If you're thinking of replacing your windows and doors, think of Andersen® 100 Series products. You'll find choices for virtually any project, including three different frame types. All feature energy-efficient designs that help keep energy bills to a minimum.



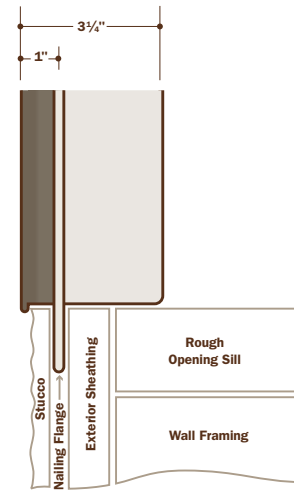
Replacement Configuration

This frame allows for fast and easy window replacement. Install the window into your existing window frame without disturbing interior or exterior trim, which saves you time and money.



1 3/8" Flange Setback

The integral nailing flange makes it easy to install windows into a new opening and helps make sure the windows and patio doors are weathertight.



1" Flange Setback With Stucco Key

The integral nailing flange makes it easy to install windows into a new opening and helps make sure the windows and patio doors are weathertight. The stucco key eliminates gaps that can result from the natural contraction of exterior stucco.



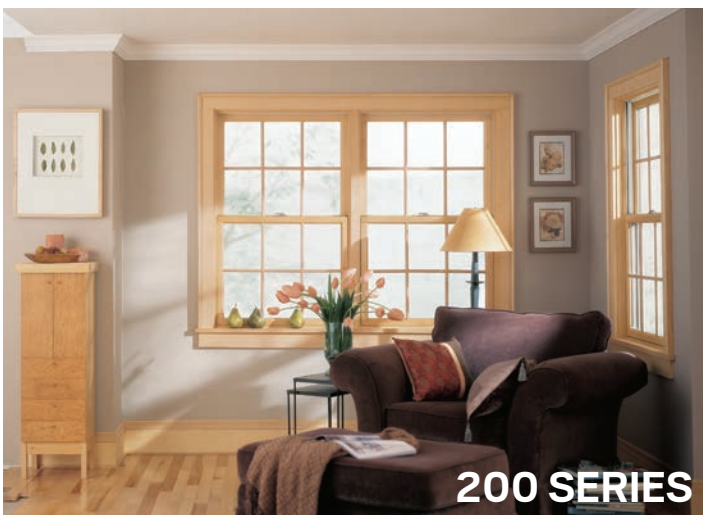
Custom sizes for a weathertight fit.

Andersen 100 Series windows and patio doors are available in custom sizes, which helps provide a more weathertight fit for any replacement project.

ANDERSEN® PRODUCT FAMILY

In addition to 100 Series products, Andersen offers several other series of windows and patio doors. All feature the quality construction and low-maintenance designs you'd expect from the industry leader. For additional information about each series, including finish options, hardware choices, accessories and more, visit andersenhomedepot.com.

	A-SERIES	400 SERIES	200 SERIES	100 SERIES
MATERIAL	Wood-Clad	Wood-Clad	Wood-Clad	Fibrex® Composite
EXTERIOR COLORS	11 Colors	7 Colors	6 Colors	6 Colors
INTERIOR WOOD SPECIES	6 Options	3 Options	1 Option	
INTERIOR COLORS/FINISHES	13 Options	3 Colors	6 Colors	4 Colors
DECORATIVE EXTERIOR TRIM OPTIONS	✓	✓	✓	
 ASK ABOUT ENERGY STAR	✓	✓	✓	✓
COASTAL OPTIONS	✓	✓		



IMPROVING THE VIEW OUTSIDE.

Respect for the environment is nothing new at Andersen.

For more than a century, it's been part of who we are. Our commitment to recycle and reclaim materials began simply because it was good business. Now it's part of our commitment to sustainability and responsible stewardship of all our resources. Andersen is committed to providing you with long-lasting, energy-efficient windows and doors.



Andersen makes windows and patio doors with options that are **ENERGY STAR**® certified throughout the U.S.



Andersen is a charter member of the **U.S. Green Building Council** and a strong supporter of its LEED® (Leadership in Energy and Environmental Design) Green Building Rating System.



Andersen was the first window and door manufacturer with **Green Seal**™ certified products. Please visit our website at andersenwindows.com for a list of certified products.

WINDOWS • DOORS
Andersen® 

Come home to Andersen.®

andersenhomedepot.com



10% POST CONSUMER RECYCLED FIBER

Printed on FSC® certified paper, produced using Green-e certified renewable energy, with 10% post consumer recovered fiber.

"ENERGY STAR" is a registered trademark of the U.S. Environmental Protection Agency. All trademarks where denoted are marks of their respective owners. ©2017 Andersen Corporation. All rights reserved. 08/17 Part #9044189

