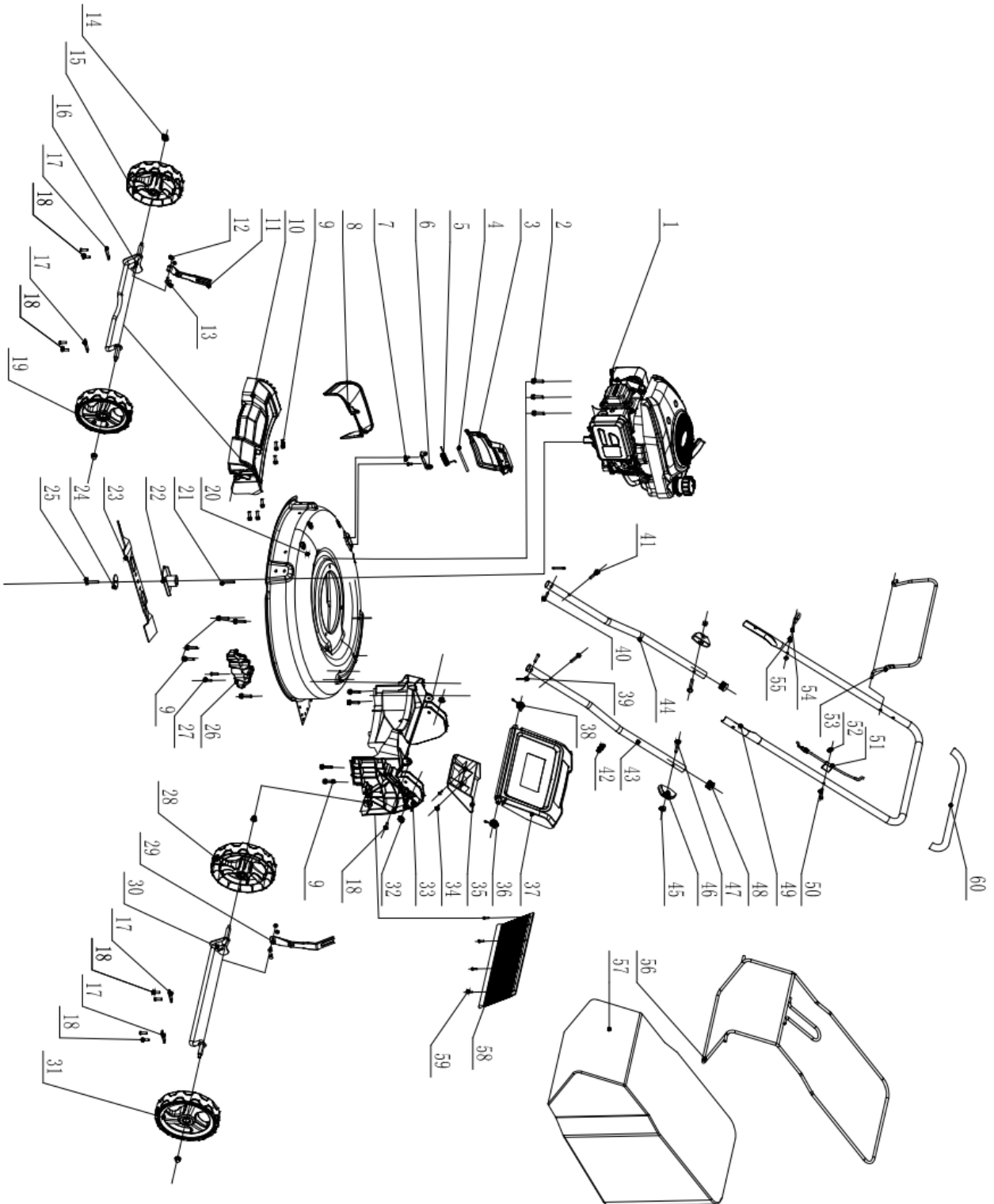


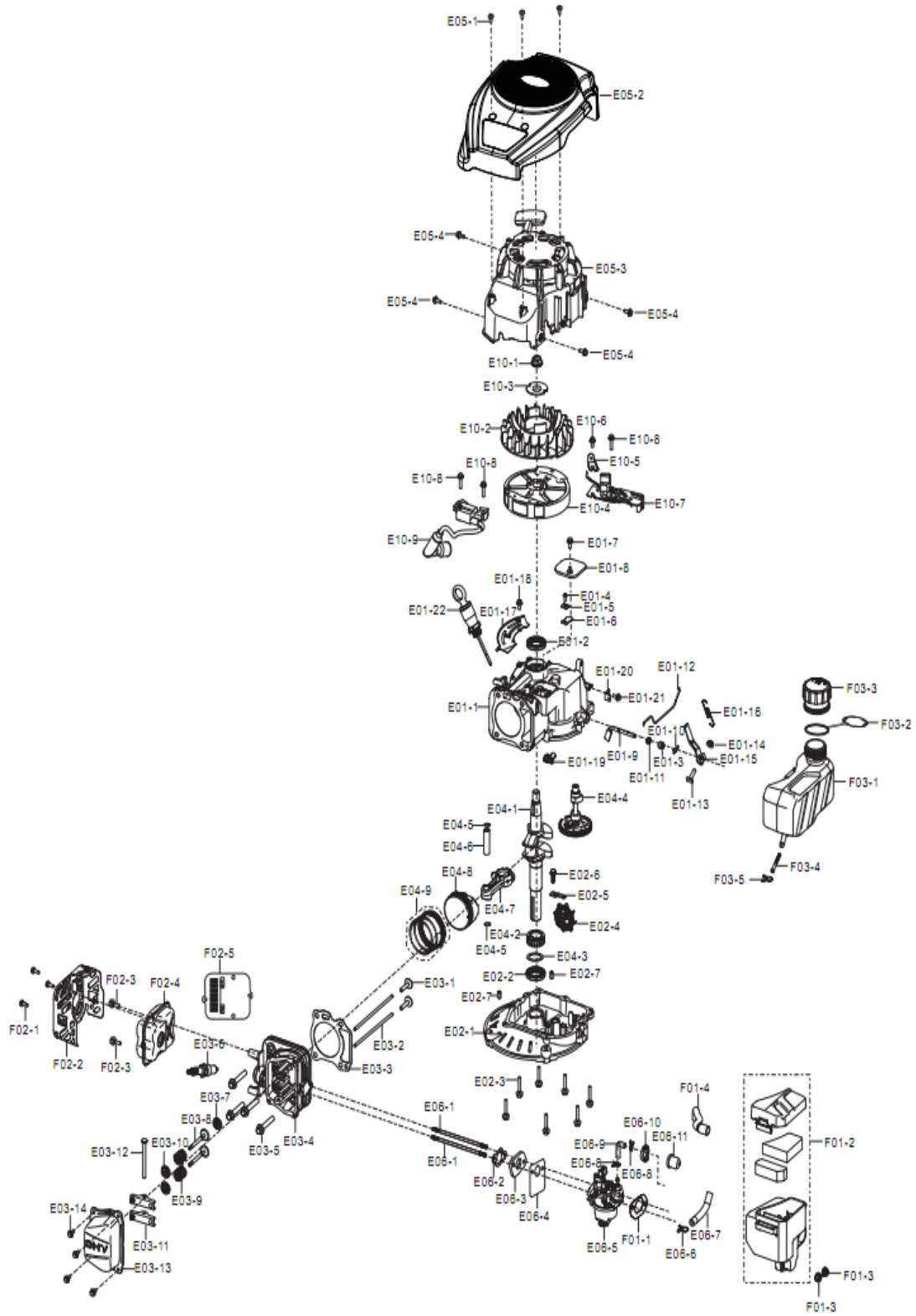
EXPLODED VIEW AND PARTS LIST



| Item | Stock# | Description | Qty |
|------|------------|---------------------------------------|-----|
| 1 | 303190311 | Engine | 1 |
| 2 | 303020241 | Bolt M8x25 | 3 |
| 3 | 203050381 | Side discharge deflector | 1 |
| 4 | 303090066A | Spring pin shaft | 1 |
| 5 | 303130335 | Torsional spring | 1 |
| 6 | 303160456 | Side discharge bracket | 1 |
| 7 | 303020468 | Screw M6x10 | 2 |
| 8 | 203050382A | Side discharge chute | 1 |
| 9 | 303010353 | Screw T6.3*16 | 15 |
| 10 | 203050399B | Front cover | 1 |
| 11 | 303071365 | Front adjustment spring leaf assembly | 1 |
| 12 | 303030032 | Nylon locknut M6 | 4 |
| 13 | 303020339 | Screw M6x14 | 4 |
| 14 | 303030077 | Flange nylon nut M8 | 4 |
| 15 | 203050384 | 7 inch Right wheel | |
| 16 | 303180934 | Front axle seaming | 1 |
| 17 | 303071034 | Axle keeper | 4 |
| 18 | 303010216 | Screw ST6.3x20 | 10 |
| 19 | 203050385 | 7 inch Left wheel | 1 |
| 20 | 303181181 | 21 inch Steel deck | 1 |
| 21 | 303110030 | Key 4.7x40 | 1 |
| 22 | 303180808 | Blade connector | 1 |
| 23 | 303071037 | 21 inch Blade | 1 |
| 24 | 303043023A | Butterfly washer | 1 |
| 25 | 303020626 | Bolt | 1 |
| 26 | 203021335 | Plastic windshield | 1 |
| 27 | 303010332 | Screw ST6.3*20 | 2 |
| 28 | 203050386 | 8 inch Right wheel | 1 |
| 29 | 303071366 | Rear raise spring assembly | 1 |
| 30 | 303180938A | Rear axle seaming | 1 |

| Item | Stock# | Description | Qty |
|------|------------|-----------------------------------|-----|
| 31 | 203050387 | 8 inch Left wheel | 1 |
| 32 | 303030087 | Lock nut M6 | 2 |
| 33 | 203050388B | Rear base | 1 |
| 34 | 203050389 | Rear block cover | 1 |
| 35 | 303010095 | Tapping screw | 2 |
| 36 | 303130336 | Rear cover torsional spring left | 1 |
| 37 | 203050390A | Rear cover | 1 |
| 38 | 303130337 | Rear cover torsional Spring right | 1 |
| 39 | 303160807 | Axis pin M6X35 | 2 |
| 40 | 303121005 | Cotter pin | 2 |
| 41 | 303020558 | Screw | 2 |
| 42 | 203050519 | Wire Clip | 1 |
| 43 | 303080488C | Lower handle L | 1 |
| 44 | 303080503C | Lower handle R | 1 |
| 45 | 303030026 | Nut M8 | 2 |
| 46 | 203020865A | Knob | 2 |
| 47 | 303020140 | T-screw M8x50 | 2 |
| 48 | 302060012 | Plug | 2 |
| 49 | 303080489A | Upper handle | 1 |
| 50 | 303020308 | Screw M6x30 | 1 |
| 51 | 302080049 | Brake cable | 1 |
| 52 | 303030025 | Cap nut M6 | 2 |
| 53 | 303080490 | Cutting control bar | 1 |
| 54 | 303160531A | Hook | 1 |
| 55 | 303030065 | Nut M6 | 1 |
| 56 | 303080491 | Collector holder | 1 |
| 57 | 302120048 | Grass collector | 1 |
| 58 | 302080050A | Rubber sheet | 1 |
| 59 | 303010351 | Tapping screw | 4 |
| 60 | 302020010 | Sponge | 1 |

ENGINE EXPLODE VIEW AND PART LIST



| Item | Stock # | Description | Qty |
|--------|--------------------|--|-----|
| E01-1 | 11310-Z3C0110-00A0 | CRANKCASE SUBASSEMBLY. | 1 |
| E01-2 | 90682-Z240110-0000 | SEAL, OIL | 1 |
| E01-3 | 90682-Z030210-0000 | SEAL, OIL | 1 |
| E01-4 | 90103-0410-51 | SCREW | 1 |
| E01-5 | 11321-Z2P0110-0000 | PIECE, BREATH | 1 |
| E01-6 | 11337-Z2P0110-0000 | LIMIT BOARD | 1 |
| E01-7 | 90007-0512-A1 | BOLT | 1 |
| E01-8 | 11333-Z2P0110-0000 | PLATE, BREATH GROOVE COVER | 1 |
| E01-9 | 16061-Z2P0110-00A0 | ARM, GOVERNOR | 1 |
| E01-10 | 90501-Z010110-0000 | PIN | 1 |
| E01-11 | 90412-Z870210-0000 | WASHER, FLAT | 1 |
| E01-12 | 16062-Z2P0110-0000 | ROD, GOVERNEOR | 1 |
| E01-13 | 16072-Z010110-0000 | BOLT, GOVERNOR SUPPORT | 1 |
| E01-14 | 90305-0600-31 | NUT | 1 |
| E01-15 | 16070-Z2P0110-0000 | SUPPORT SUBASSEMBLY, GOVERNOR | 1 |
| E01-16 | 16063-Z2P0110-0000 | SPRING, GOVERNOR | 1 |
| E01-17 | 19308-Z2P0110-0000 | SHIELD, CRANKCASE SIDE | 1 |
| E01-18 | 90007-0512-A1 | BOLT | 1 |
| E01-19 | 11340-Z2P0110-0000 | Return oil block assembly | 1 |
| E01-20 | 16561-Z2P0110-0000 | PLATE SUBASSEMBLY, THROTTLE CONTROL BOTTOM | 1 |
| E01-21 | 90007-0512-A1 | BOLT | 1 |
| E01-22 | 15010-Z2P0310-Q200 | DIPSTICK, OIL | 1 |
| E02-1 | 11411-Z2P0110-00A0 | COVER, CRANKCASE | 1 |
| E02-2 | 90682-Z030320-0000 | SEAL, OIL | 1 |
| E02-3 | 90001-0630-01 | BOLT | 7 |
| E02-4 | 16400-Z2P0111-00A0 | GEAR ASSY, GOVERNOR | 1 |
| E02-5 | 16013-Z030120-0000 | PLATE, GOVERNOR SPINDLE COMPRESSION | 1 |
| E02-6 | 90001-0616-01 | BOLT | 1 |
| E02-7 | 90502-0812-00 | PIN | 2 |
| E03-1 | 14081-Z2P0110-00A0 | TAPPET, VALVE | 2 |
| E03-2 | 14071-Z2P0110-00A0 | LIFTER, VALVE | 2 |
| E03-3 | 12131-Z3C0110-00A0 | GASKET, CYLINDER HEAD | 1 |
| E03-4 | 12140-Z3C0110-00A0 | HEAD SUBASSEMBLY, CYLINDER | 1 |
| E03-5 | 90001-0850-01 | BOLT | 4 |
| E03-6 | 30010-Z120110-00A0 | PLUG, SPARK | 1 |
| E03-7 | 12101-Z810210-00A0 | GUIDE, SEAL | 1 |
| E03-8 | 12110-Z3C0110-00A0 | VALVES SET | 2 |
| E03-9 | 12103-Z030110-0000 | SPRING, VALVE | 2 |
| E03-10 | 12112-Z010110-00A0 | SEAT, VALVE SPRING | 2 |
| E03-11 | 14310-Z2P0110-00A0 | ROCKER SUBASSEMBLY, VALVE | 2 |
| E03-12 | 14330-Z2P0110-00A0 | SHAFT, VALVE ROCKER | 1 |
| E03-13 | 12411-Z2P0110-0000 | COVER, CYLINDER HEAD | 1 |
| E03-14 | 90007-0512-A1 | BOLT | 4 |
| E04-1 | 13300-Z3C0910-00A0 | CRANKSHAFT ASSY. | 1 |
| E04-2 | 14014-Z2P0210-00A0 | GEAR, TIMING DRIVE | 1 |

| Item | Stock # | Description | Qty |
|--------|--------------------|-----------------------------|-----|
| E04-3 | 90408-Z030210-0000 | WASHER, FLAT | 1 |
| E04-4 | 14200-Z2P0110-00A0 | CAMSHAFT ASSY. | 1 |
| E04-5 | 13122-Z240110-00A0 | CLIP, PISTON PIN | 2 |
| E04-6 | 13121-Z240110-00A0 | PIN, PISTON | 1 |
| E04-7 | 13010-Z2P0110-00A0 | ROD, CONNECTING | 1 |
| E04-8 | 13111-Z3C0110-00A0 | PISTON | 1 |
| E04-9 | 13200-Z870110-00A0 | RING ASSY, PISTON | 1 |
| E05-1 | 90107-0516-01 | SCREW | 3 |
| E05-2 | 80001-Z2P0210-RC00 | HOUSING, ENGINE | 1 |
| E05-3 | 28200-Z2P0310-Q200 | STARTER ASSY, RECOIL | 1 |
| E05-4 | 90007-0516-A1 | BOLT | 4 |
| E06-1 | 90204-Z010210-0100 | BOLT | 1 |
| E06-2 | 17002-Z2P0110-00A0 | GASKET, INLET | 1 |
| E06-3 | 16003-Z2P0110-00A0 | PLATE, CARBURETOR INSULATOR | 1 |
| E06-4 | 16004-Z2P0110-00A0 | GASKET, INSULATOR PLATE | 1 |
| E06-5 | 16100-Z3C0210-00A0 | CARBURETOR ASSY. | 1 |
| E06-6 | 90685-1000-01 | CLAMP | 1 |
| E06-7 | 90686-Z2P0110-0000 | TUBE, FUEL | 1 |
| E06-8 | 90685-0700-01 | CLAMP | 2 |
| E06-9 | 16211-Z2P0110-0000 | TUBE, STARTING RICHED VALVE | 1 |
| E06-10 | 16212-Z2P0110-0000 | SEAT, STARTING RICHED VALVE | 1 |
| E06-11 | 16213-Z2P0110-0000 | VALVE BODY, STARTING RICHED | 1 |
| E10-1 | 13501-Z010110-00A0 | NUT, FLYWHEEL | 1 |
| E10-2 | 19352-Z2P0110-00A0 | IMPELLER | 1 |
| E10-3 | 28020-Z2P0110-0000 | SEAT, STARTER CUP | 1 |
| E10-4 | 13510-Z2P0110-00A0 | FLYWHEEL SUBASSEMBLY | 1 |
| E10-5 | 30029-Z2P0110-0000 | LUG, SHROUD | 1 |
| E10-6 | 90007-0516-A1 | BOLT | 1 |
| E10-7 | 45200-Z2P0110-JS00 | BRAKE ASSY. | 1 |
| E10-8 | 90007-0520-A1 | BOLT | 3 |
| E10-9 | 30400-Z2P0110-0000 | COIL, IGNITION | 1 |
| F01-1 | 17001-Z2P0110-00A0 | GASKET, AIR CLEANER | 1 |
| F01-2 | 17100-Z2P0110-0000 | CLEANER, AIR | 1 |
| F01-3 | 90305-0600-31 | NUT | 2 |
| F01-4 | 17004-Z2P0110-0000 | TUBE, BREATHER | 1 |
| F02-1 | 90107-0413-03 | BOLT | 3 |
| F02-2 | 18130-Z2P0210-0000 | COVER, MUFFLER OUTER | 1 |
| F02-3 | 90001-0616-01 | BOLT | 2 |
| F02-4 | 18100-Z2P0210-0000 | MUFFLER ASSY. | 1 |
| F02-5 | 18020-Z2P0110-00A0 | PLATE, MUFFLER INSULATOR | 1 |
| F03-1 | 16600-Z2P0110-Q2A9 | TANK ASSY, FUEL | 1 |
| F03-2 | 16744-Z620120-0000 | TANK CAP CHAIN | 1 |
| F03-3 | 16730-Z620210-LKD0 | COVER, FUEL TANK | 1 |
| F03-4 | 16652-Z030110-00A0 | STRAINER, FUEL | 1 |
| F03-5 | 90685-1000-01 | CLAMP | 1 |